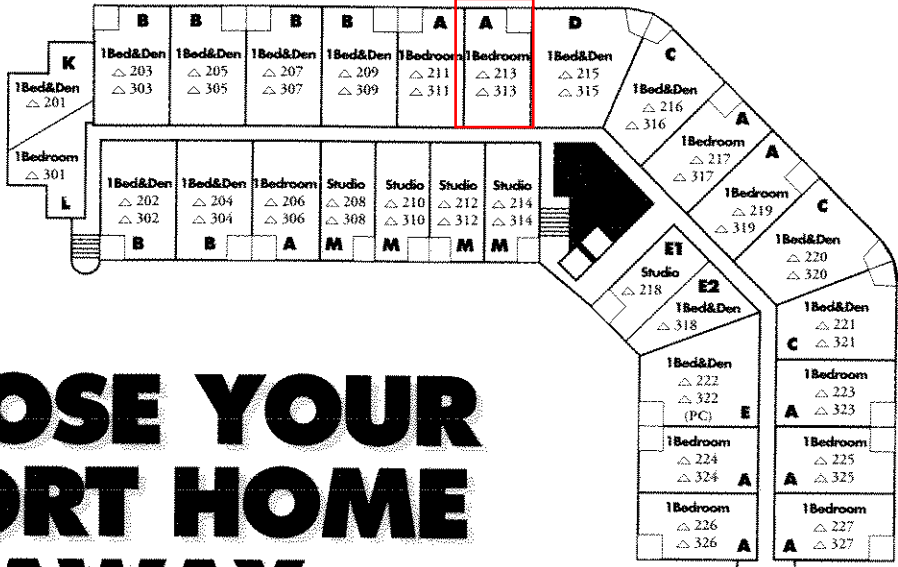


\$699K



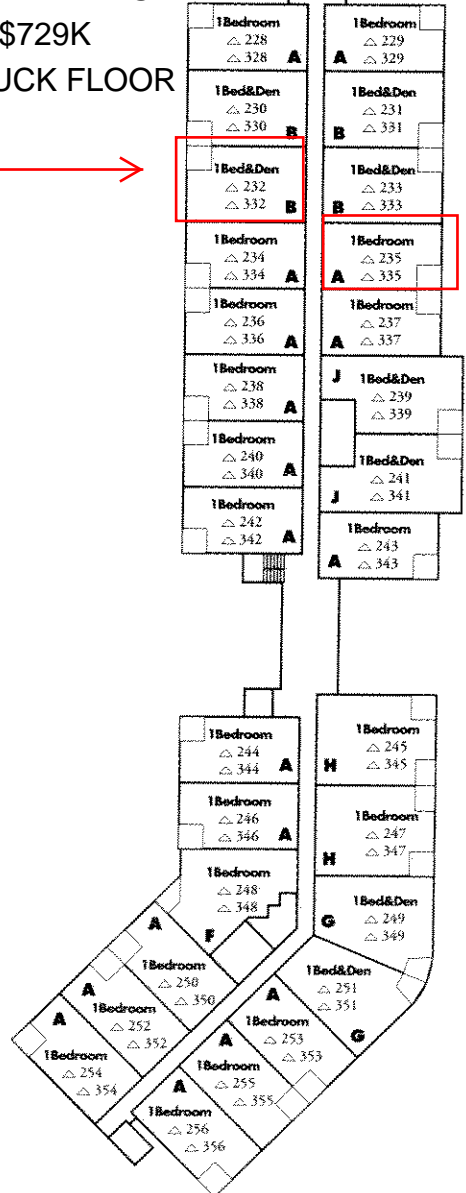
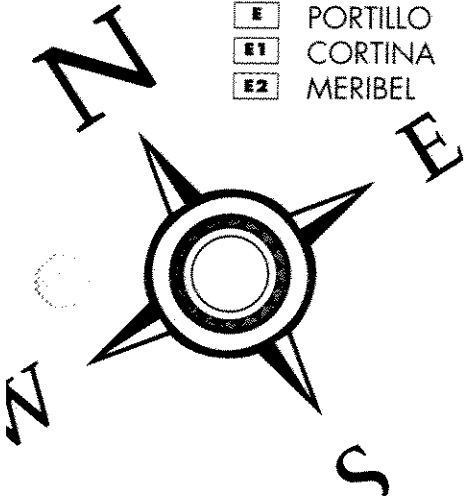
# CHOOSE YOUR RESORT HOME GET-AWAY TODAY!

MOUNTAIN VIEWS  
ASKING \$729K  
INNSBRUCK FLOOR PLAN

150 SQ FT  
LARGER  
ASKING  
\$729k

**N**ow you can live in one of Whistler's most desirable and prestigious locations at an unbeatable price – if you act quickly!

- |                    |                      |
|--------------------|----------------------|
| <b>A</b> INNSBRUCK | <b>F</b> KITZBÜHEL   |
| <b>B</b> CHAMONIX  | <b>G</b> ZERMATT     |
| <b>C</b> ASPEN     | <b>H</b> MONT-BLANC  |
| <b>D</b> ST. ANTON | <b>J</b> VAL D'ISERE |
| <b>E</b> PORTILLO  | <b>K</b> VAIL        |
| <b>E1</b> CORTINA  | <b>L</b> ST. MORITZ  |
| <b>E2</b> MERIBEL  | <b>M</b> FURANO      |

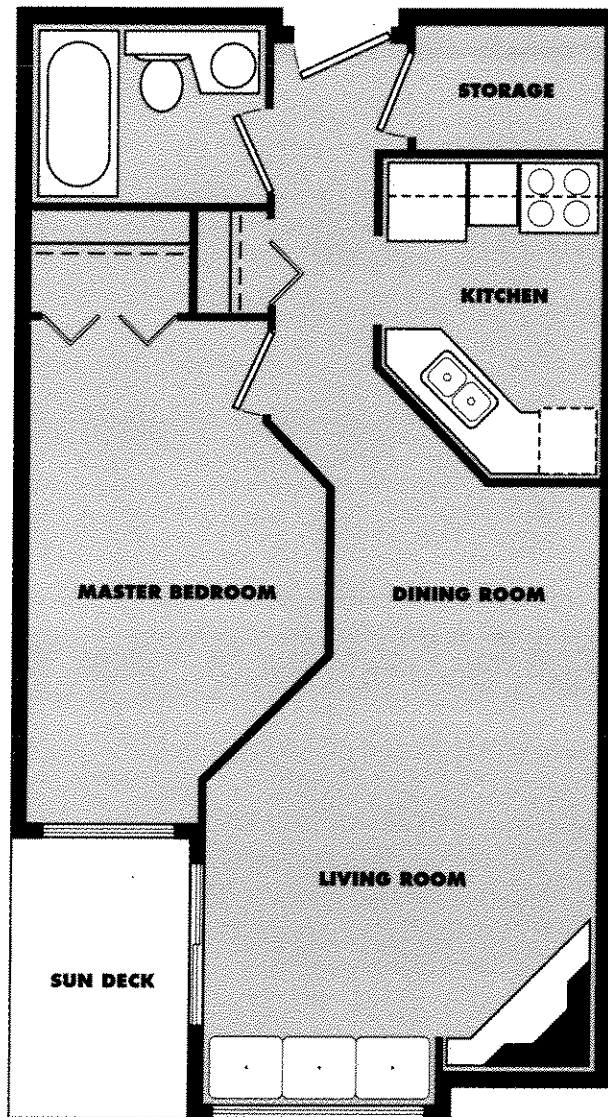


# THE INNSBRUCK

approximately 548 sq.ft.

**This One Bedroom Resort Home Is Uniquely Designed And Exceptionally Bright And Spacious.**

- ▲ Walk out to extra large balcony from living room
- ▲ Warm and cozy gas burning fireplace
- ▲ Complete designer home furnishing package
- ▲ Kitchenware, linens, window coverings, t.v. and decor details are all included
- ▲ Easily accommodates four adults



- ▲ Flexible living area that easily converts to sleeping area
- ▲ Fully secured underground parking
- ▲ Bright and spacious kitchen fully equipped with full sized appliances
- ▲ Plenty of in suite storage

*“Owning your own resort home has never been this easy!”*

  
WHISTLER'S  
MARKET PLACE  
LODGE