

STRATA PLAN OF

LOT 1

D.L. 3361, G.P.I., N.W.D.

PLAN 15526

FIRST SHEET  
Sheet 1 of 20 Sheets

Vr:191

SCALE: 1 INCH = 100 FEET

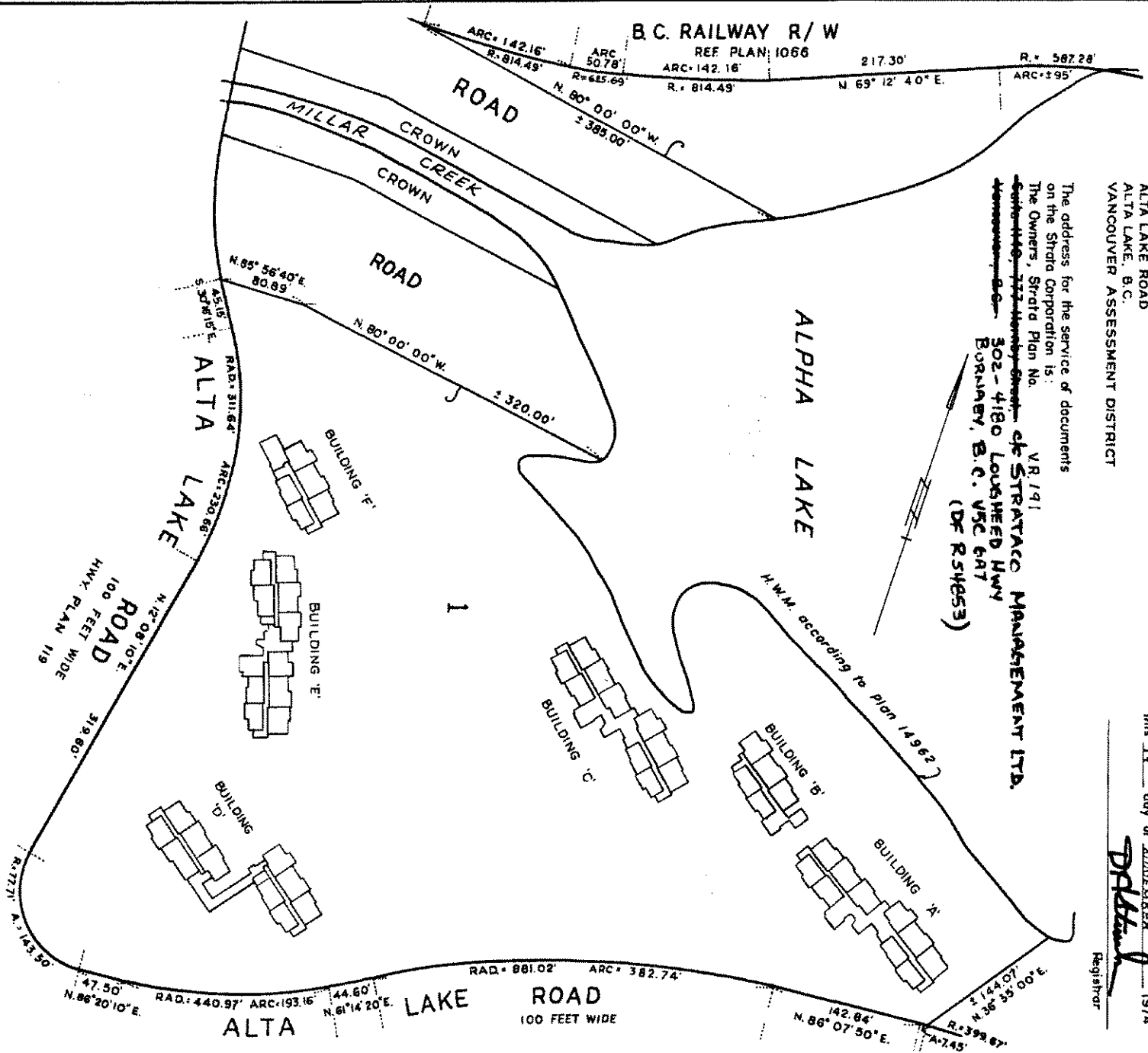
"TAMARISK - I"  
ALTA LAKE ROAD  
ALTA LAKE, B.C.  
VANCOUVER ASSESSMENT DISTRICT

Strata Plan VR191, deposited and registered in  
the Land Registry Office at Vancouver, B.C.  
this 13<sup>th</sup> day of AUGUST 1974

*[Signature]*  
Registrar

The address for the service of documents  
on the Strata Corporation is:  
The Owners, Strata Plan No. ~~302-4180 Louheed Hwy~~  
~~302-4180 Louheed Hwy~~ 302-4180 LOUHEED HWY  
BURNABY, B.C. V5C 6A7  
(DF R54653)

VR 191  
of STRATACO MANAGEMENT LTD.



RE-APPROVED UNDER THE  
STRATA TITLES ACT, 1974  
13<sup>th</sup> day of NOV., 1974.  
*[Signature]*  
ROY AND WAGENAR  
Surveyors & Engineers  
Vancouver, B.C. V6G 1C3

Approved under the Strata Titles Act  
this 12<sup>th</sup> day of August 1974  
*[Signature]*  
Approving Officer  
Regional District of  
Squamish - *[Signature]*

Bearings are astronomic, derived from Plan 14962  
I, C. Wagenar, of the City of Vancouver, British Columbia  
Land Surveyor, hereby certify:  
That the buildings erected on the parcel described  
above are wholly within the external boundaries of  
that parcel  
*[Signature]*  
Dated at Vancouver, B.C.  
this 6<sup>th</sup> day of March 1974  
B.C.L.S.

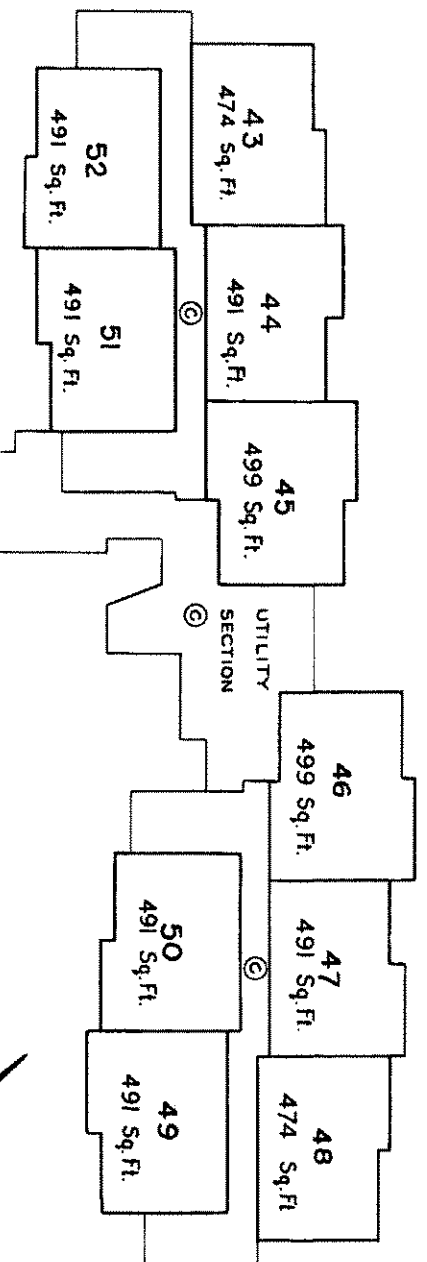
STRATA LOTS  
BUILDING 'C'

SCALE: 1/4" = 20 FEET

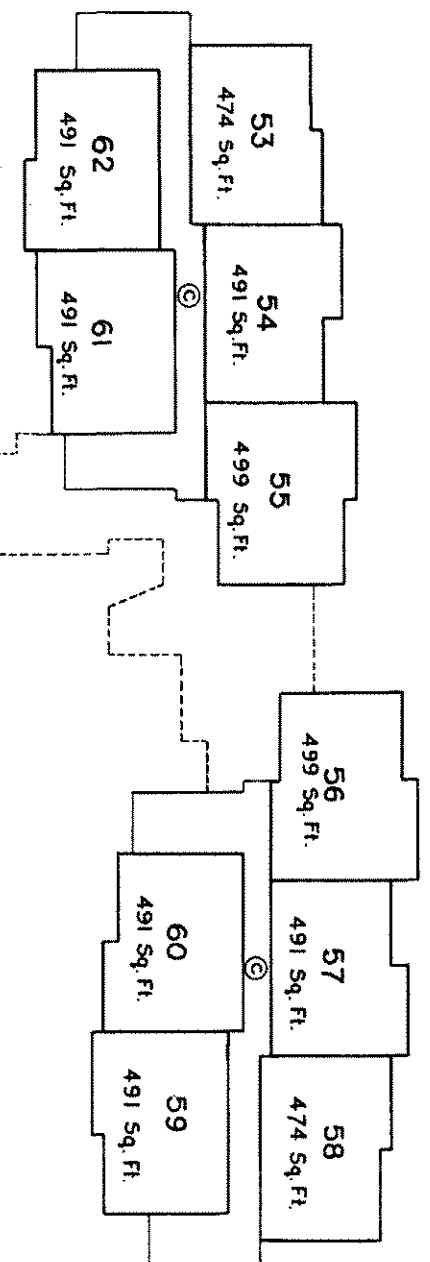
Sheet 15 of 20 Sheets

Vr. 191

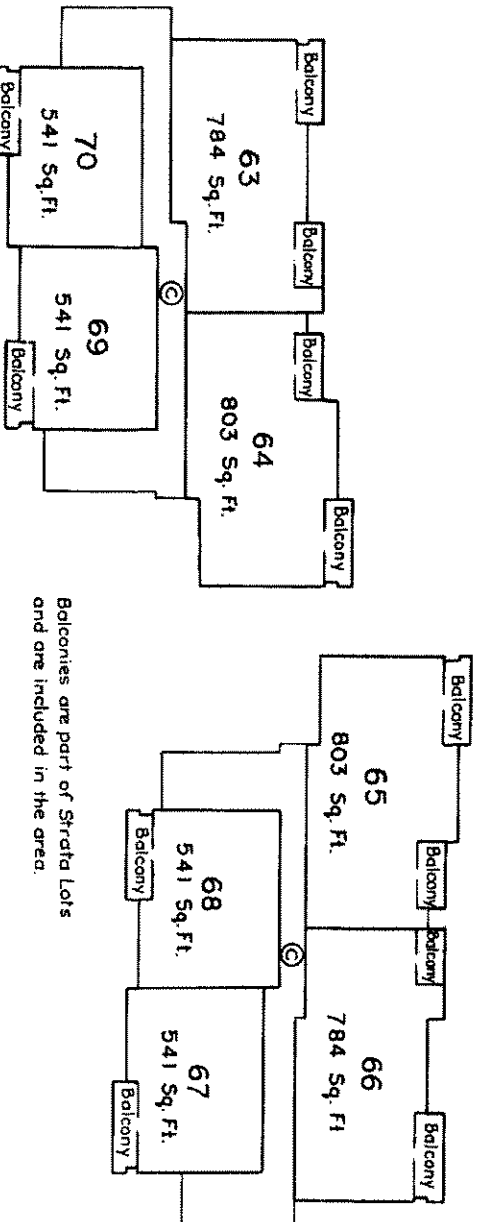
FIRST FLOOR



SECOND FLOOR



THIRD FLOOR



Balconies are part of Strata Lots  
and are included in the area.

Date 11/16/73 of North

B.C.L.S.

J-160-73

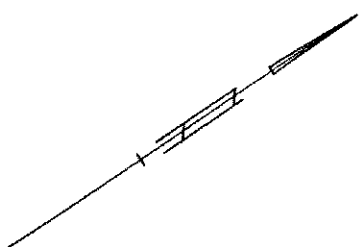
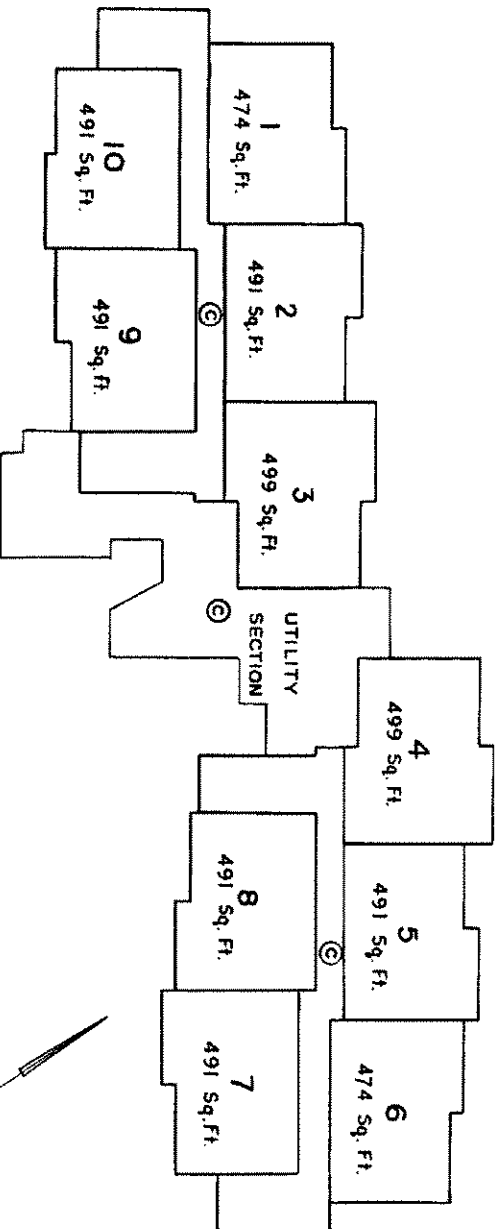
STRATA LOTS  
BUILDING "A"

SCALE: 1/4" = 20 FEET

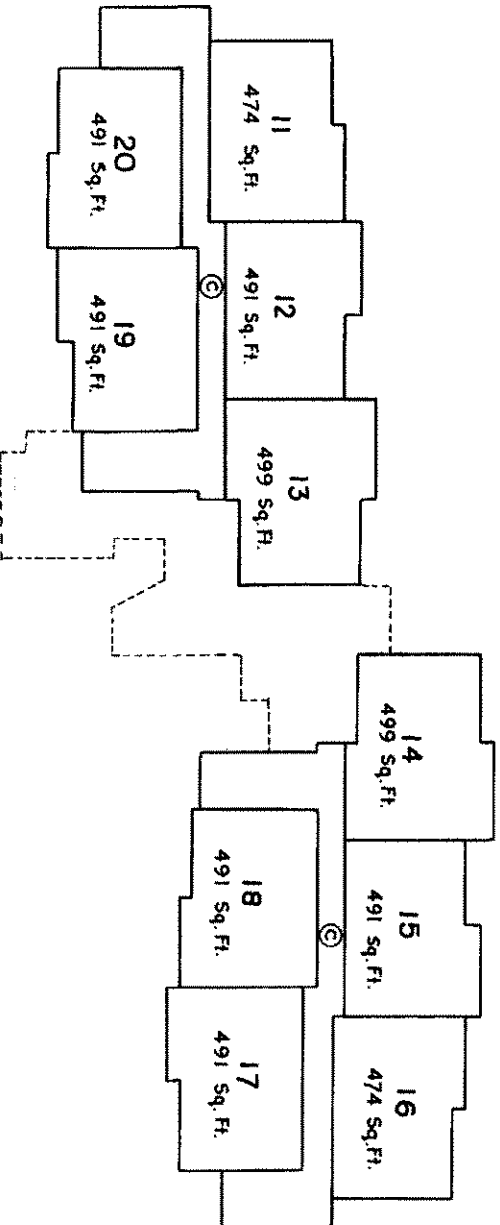
Sheet 13 of 20 Sheets

Vr. 191

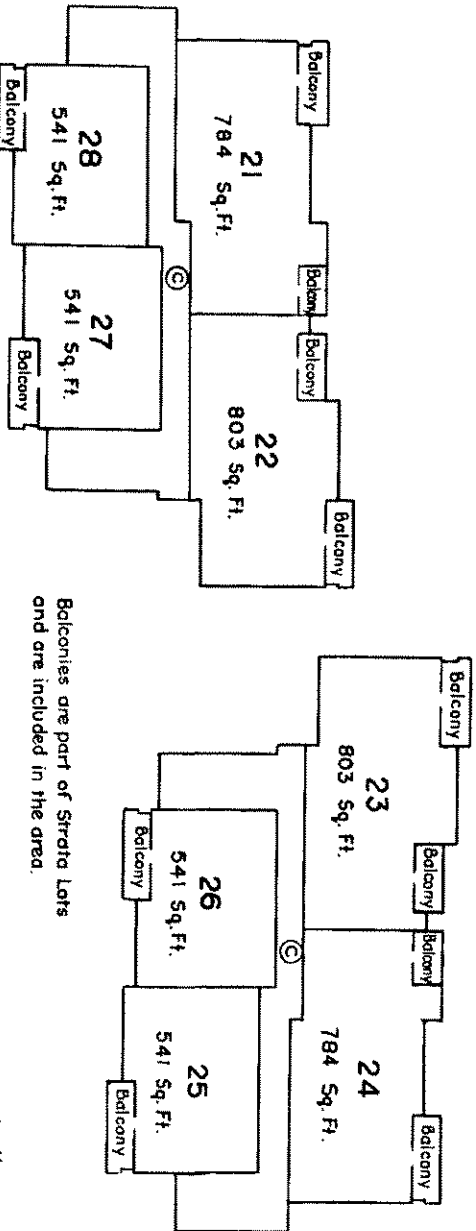
FIRST FLOOR



SECOND FLOOR



THIRD FLOOR



Balconies are part of Strata Lots  
and are included in the area.

Date this 6<sup>th</sup> day of March 1974

A handwritten signature is located at the bottom of the page.

B.C.L.S.

J-160-73

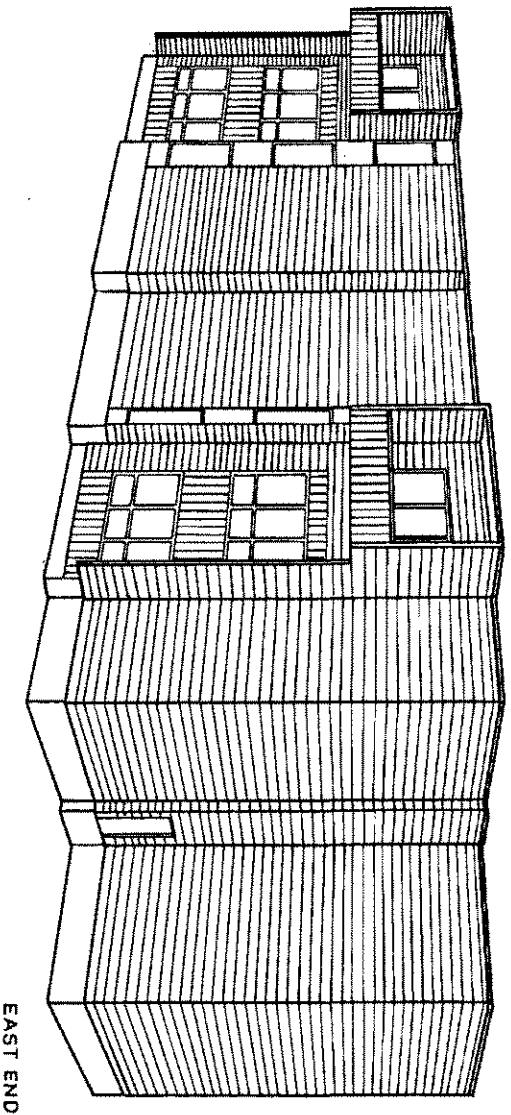
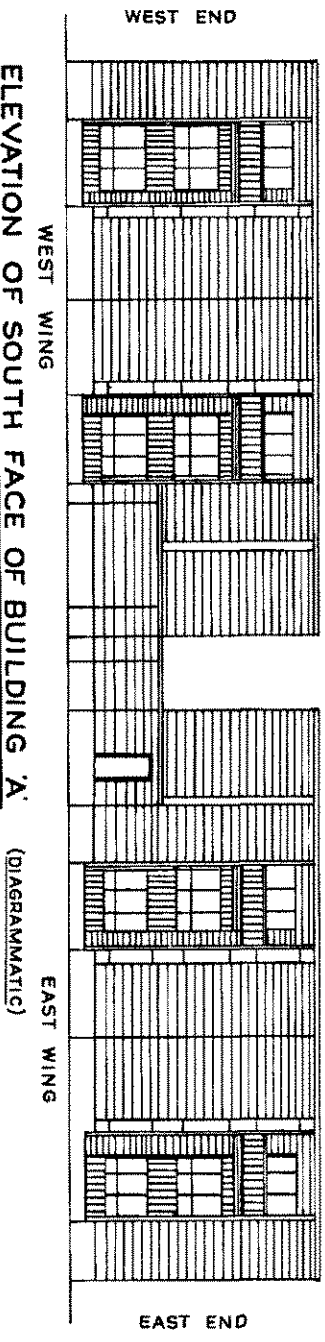
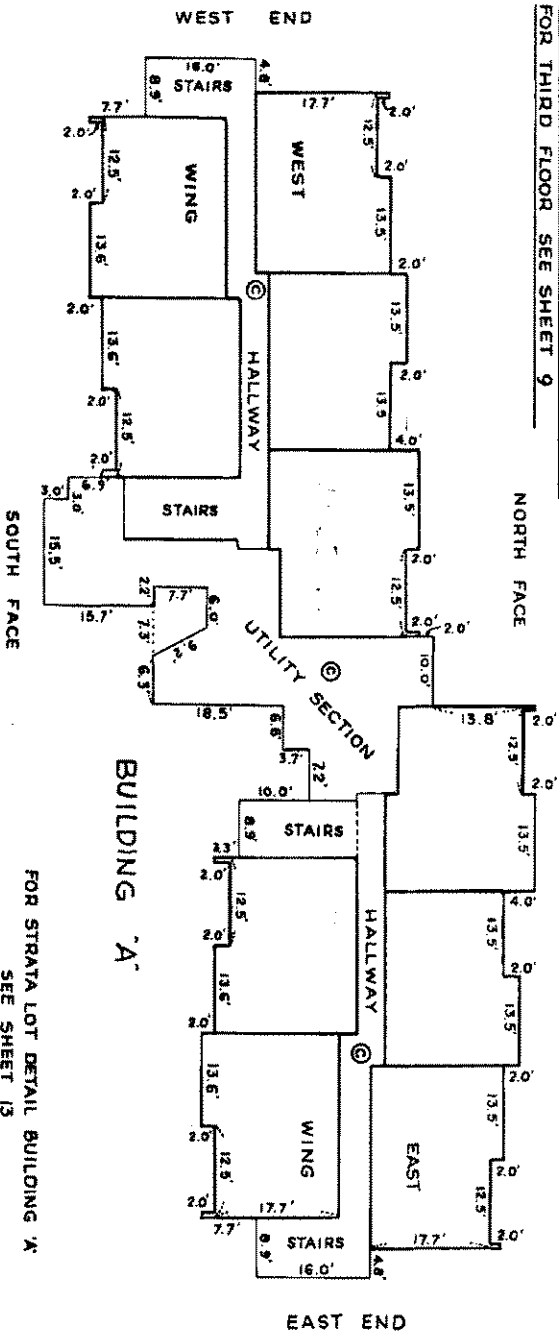
**BUILDING 'A'**  
**FLOOR PLAN DETAIL**  
**FIRST AND SECOND FLOORS**

Sheet 8 of 20 Sheets

SCALE - 1 INCH = 20 FEET

VR. 191

NOTE:  
 FIRST AND SECOND FLOORS ARE IDENTICAL.  
 FOR THIRD FLOOR SEE SHEET 9



**PERSPECTIVE VIEW - SOUTH FACE - WEST WING**  
**BUILDING 'A'** (DIAGRAMMATIC)  
 (EXCLUDING UTILITY SECTION)

Date: this 6<sup>th</sup> day of March 1974

B.C.L.S.

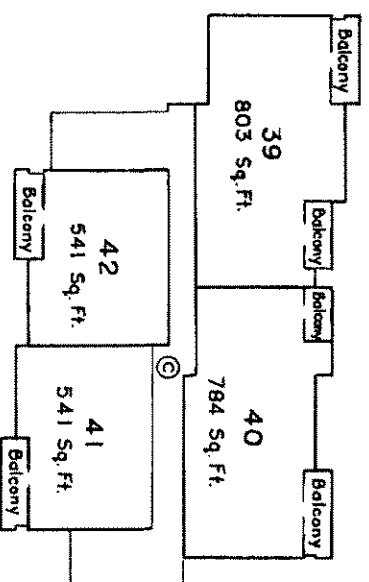
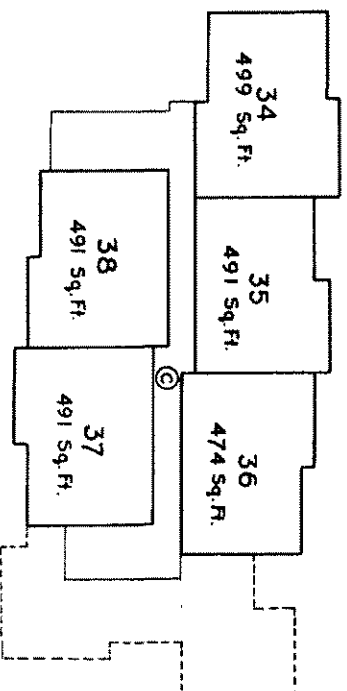
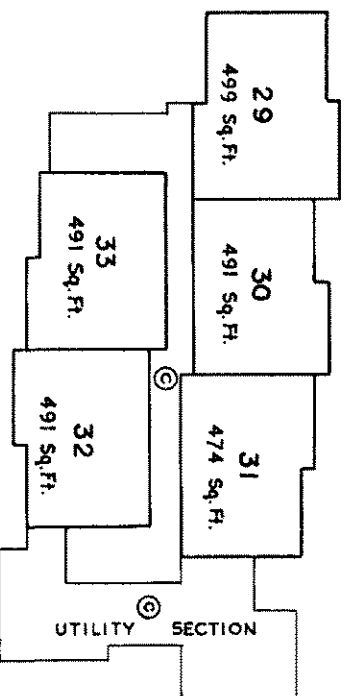
J-160-73

STRATA LOTS  
BUILDING "B"

SCALE: 1 INCH = 20 FEET

Sheet 14 of 20 Sheets

Vr191



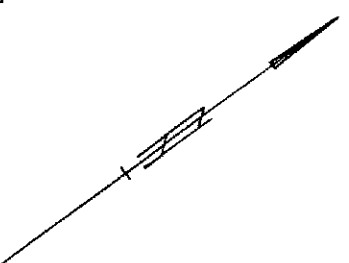
THIRD FLOOR

Balconies are part of Strata Lots  
and are included in the area.

Date: *file 6<sup>th</sup> day of March 1974*

B.C.L.S.

J-160-73



STRATA TITLES ACT

STRATA PLAN Vr191

SECOND SHEET  
Sheet 7 of 20 Sheets

LOT No.	SHEET No.	FORM 1	FORM 2	FORM 3
		SCHEDULE OF UNIT ENTITLEMENT	SCHEDULE OF INTEREST UPON DESTRUCTION	SCHEDULE OF VOTING RIGHTS
		UNIT ENTITLEMENT	INTEREST UPON DESTRUCTION	NUMBER OF VOTES
121	11,17	1060	950	
122	11,17	1036	950	
123	11,17	716	750	
124	11,17	716	750	
125	11,17	716	750	
126	11,17	716	750	
127	12,18	660	660	
128	12,18	650	660	
129	12,18	626	660	
130	12,18	650	660	
131	12,18	650	660	
132	12,18	660	660	
133	12,18	650	660	
134	12,18	626	660	
135	12,18	650	660	
136	12,18	650	660	
137	12,18	1060	950	
138	12,18	1036	950	
139	12,18	716	750	
140	12,18	716	750	
Aggregate		100,000	100,000	

SPACE FOR SIGNATURES  
(Regulation 5 (h))

**BANK OF MONTREAL**  
 BY: *[Signature]* **WITNESS AS TO BOTH:**  
*[Signature]* **ROY B. SPEDDEN**  
 ASSISTANT CREDIT MANAGER

**CREDIT MANAGER**  
 MORTGAGEE: *[Signature]*  
 TRUSTEE FOR THE ESTATE OF CATH. GENERAL MANAGERS LTD  
 WITNESS: Roy B. Spedden

**1321 HOLDINGS LTD:**  
 PER: *[Signature]* **Acc.**

**N-Z ELECTRIC LTD:**  
 PER: *[Signature]* **PRES.**

**NORTHCOST FOREST PRODUCTS LTD:**  
 PER: *[Signature]*

**OWNER-DEVELOPER:**  
**TERRASIS DEVELOPMENTS LTD.:**  
 PER: *[Signature]*  
**MORTGAGEE: REFINER:**  
**RAY SHORPS DEVELOPMENT LTD.:**  
 PER: *[Signature]*  
**ALPHA LAKE DEVELOPMENTS LTD.:**  
 PER: *[Signature]*

ACCEPTED 95 TO FORMS 1 AND 2  
*[Signature]*  
 for SUPERINTENDENT OF INSURANCE  
 Dated this 5<sup>th</sup> day of Nov. 1974  
*[Signature]*  
 B.C.L.S.

Search ALTO2 or BC Online for  
Current Information. BC Reg. 75/93

**Vr. 191**

*Wood*

LINDA J. O'NEIL, Registrar  
Vancouver/New Westminster Land Title District

REGISTRATION		DOCUMENT	
Number	Date	Date	Nature and Particulars
309258M	13/1/60	26/1/60	RIGHT-OF-WAY TO BRITISH COLUMBIA HYDRO AND POWER AUTHORITY <i>D.H. Steel v.R.</i>
309258-M CANCELLED CR0991 29/12/75 L.R.			
316807M	11/9/60	1/9/60	MORTGAGE OF RIGHT OF WAY 309258M BY MONTREAL TRUST COMPANY IN TRUST SEE 73691M AND 316807M, SUPPLEMENTAL TO M 73691M FOR FURTHER SUPPLEMENTAL TRUST DEEDS SEE 326757M <i>D.H. Steel v.R.</i>
316807-M CANCELLED DEED 27/5/77 L.R.			
186722M	11/1/69	27/3/69	RIGHT OF WAY TO BRITISH COLUMBIA HYDRO AND POWER AUTHORITY OVER PART INCLUDED IN REFERENCE PLAN 9511. <i>D.H. Steel v.R.</i>
A39723	20/0/73	16/3/73	COVENANT TO HER MAJESTY THE QUEEN IN RIGHT OF THE PROVINCE OF BRITISH COLUMBIA OVER PART OUTLINED RED ON EXPLANATORY PLAN 11701 L.R. ACT. s. 24A <i>D.H. Steel v.R.</i>
F 75760	30/10/78	17/8/78	CONVEYANCE IN FEE OF STRATA LOT 138 TAMARISK DEVELOPMENTS LTD. TO THE OWNERS STRATA PLAN VR191 PURSUANT TO SECTION 14 STRATA TITLES ACT <i>M.R. Ferguson</i>
K 12716	26/2/82	25/2/82	CONVEYANCE IN FEE OF STRATA LOT 24 FRANCES ELIZABETH GELFAND TO THE OWNERS STRATA PLAN VR191, PURSUANT TO SECTION 23, CONDOMINIUM ACT <i>D.H. Steel v.R.</i>
K 12717	26/2/82	24/2/82	MORTGAGE OF STRATA LOTS 24 AND 138 IN FAVOUR OF BANK OF MONTREAL, PURSUANT TO SECTION 23, CONDOMINIUM ACT. <i>D.H. Steel v.R.</i>
✓ K 12717 CANCELLED BY	K 107534	16/10/87	✓ <i>D.H. Steel v.R.</i>
K 47638	29/7/82	24/6/82	EASEMENT OVER PORTIONS DESIGNATED E1 TO E140 IN EXPLANATORY PLAN 16367 APURTENANT TO STRATA LOTS 1 TO 140 STRATA PLAN VR191 <i>M.R. Ferguson</i>
Corrected 24/5/94 <i>W</i>			ASSISTANT DEPUTY REGISTRAR
BH 229348	M/6/94	09/4/94	Statutory Right of Way to CENTRA GAS BRITISH COLUMBIA INC. (INC. No. 66334)

Dated this 6<sup>th</sup> day of March 1974

*[Signature]*  
B.C.L.S.

RECORD OF BY-LAWS AND ORDERS, ETC.

Vr. 191

FILING		DOCUMENT		
Number	Date	Date	Nature and Particulars	
DF H 1192	8-02-80	31-01-80	Notification of Change of By-Laws. <i>L. M. Williams</i> Assistant Secretary Kingsmen	
BE 354222	19-12-91		NOTIFICATION OF CHANGE OF BYLAWS	
BQ 43800	08.02.93 01/4/17		Notice of Change of By-Laws ATTENTION: BE CHANGE OF BYLAWS	
BT 125959	11-4-95		ATTENTION: BE CHANGE OF BYLAWS	
			Data Sheet prepared	
			Data Sheet for BC Order for	
			Search of 1052 of BC Order 10/95	
			Current Information	

Dated this 6<sup>th</sup> day of March 1974  
*[Signature]*  
 B.C.L.S.

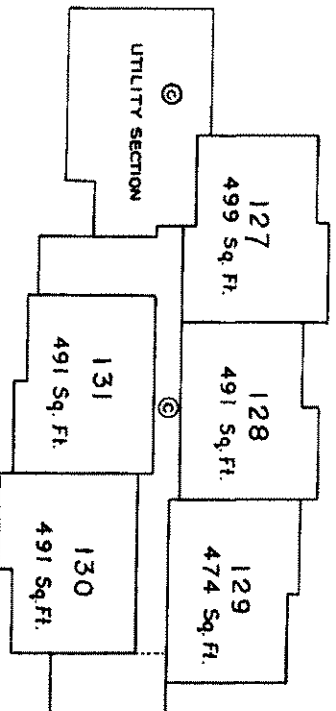
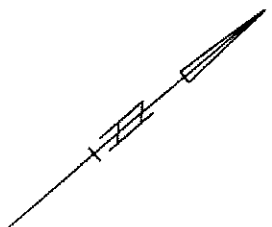


STRATA LOTS  
BUILDING 'F'

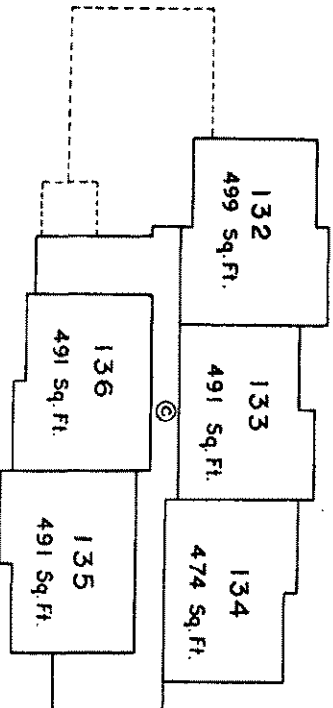
SCALE: 1 INCH = 20 FEET

Sheet 18 of 20 Sheets

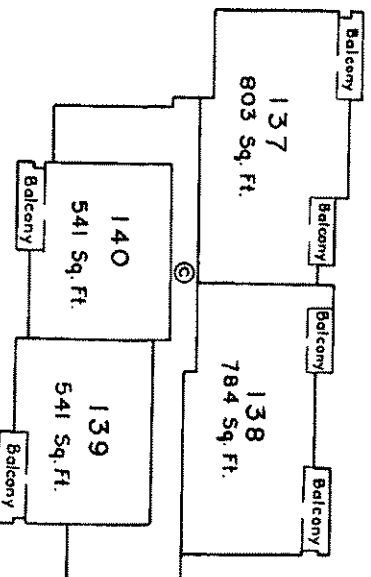
Vr. 191



FIRST FLOOR



SECOND FLOOR



THIRD FLOOR

Balconies are part of Strata Lots  
and are included in the area.

Date 15th day of March 1974

B.C.L.S.

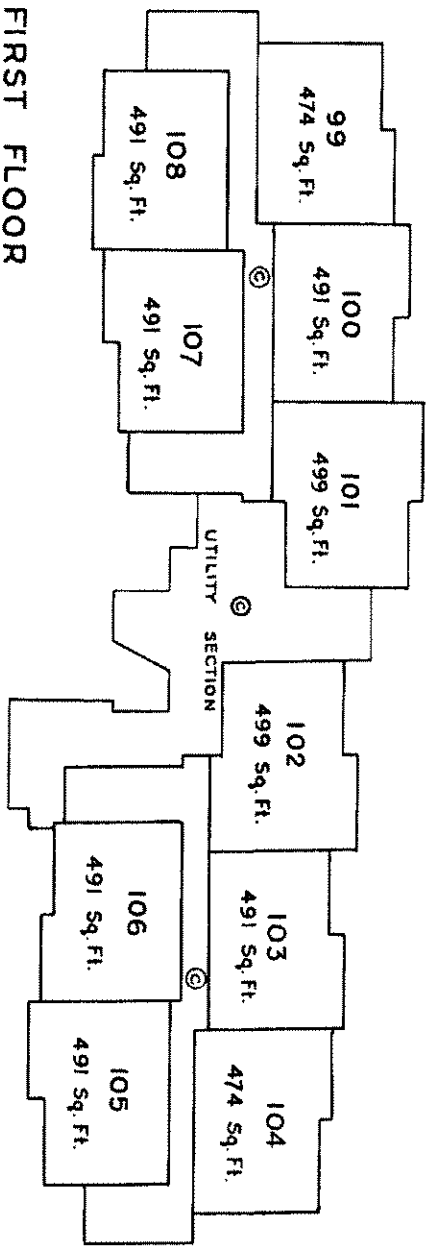
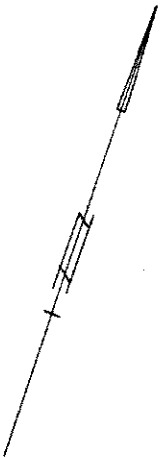
J-160-73

**STRATA LOTS  
BUILDING E**

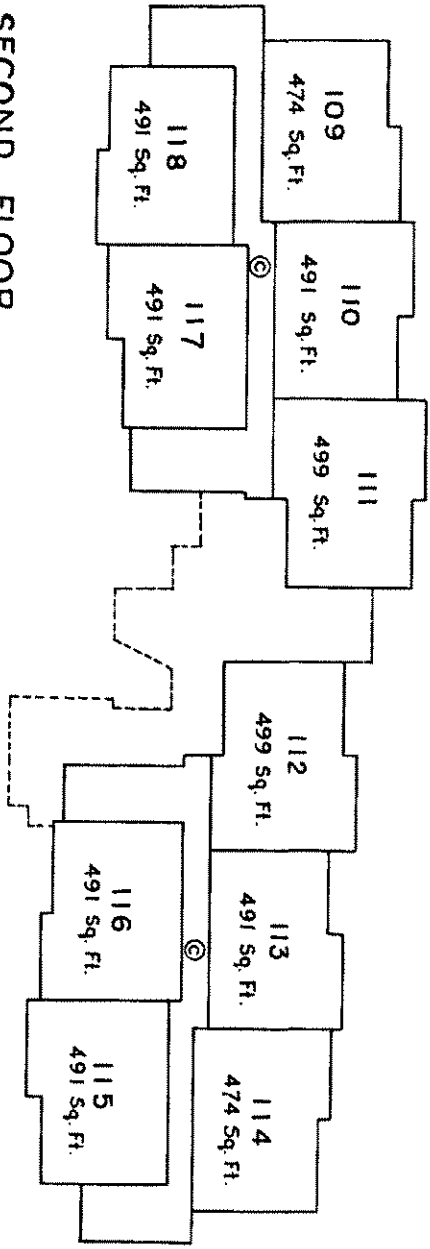
SCALE: 1/4" = 20' FEET

Sheet 17 of 20 Sheets

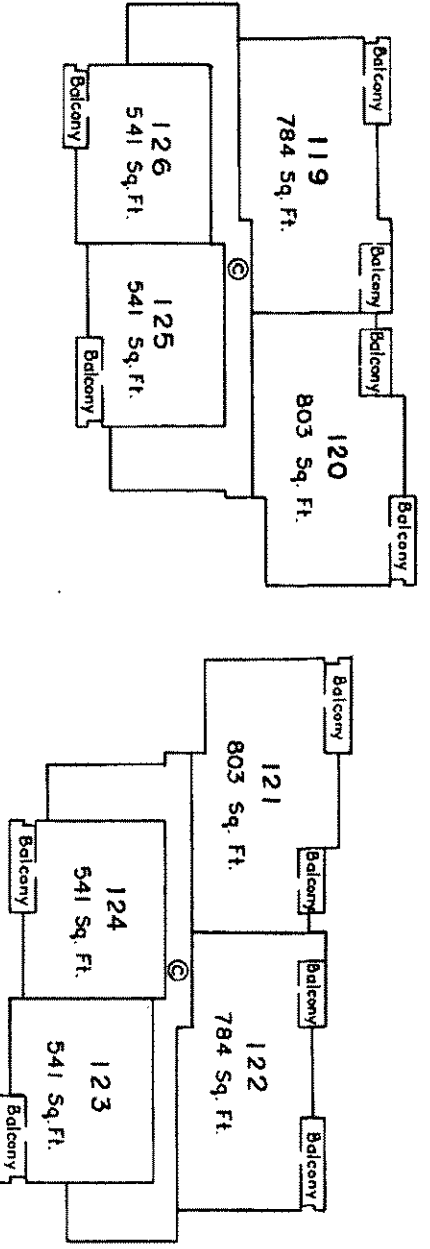
Vr. 191



**FIRST FLOOR**



**SECOND FLOOR**



**THIRD FLOOR**

Balconies are part of the Strata Lots and are included in the area.

Date this 6<sup>th</sup> day of March 1974

B.C.L.S.

J-160-73

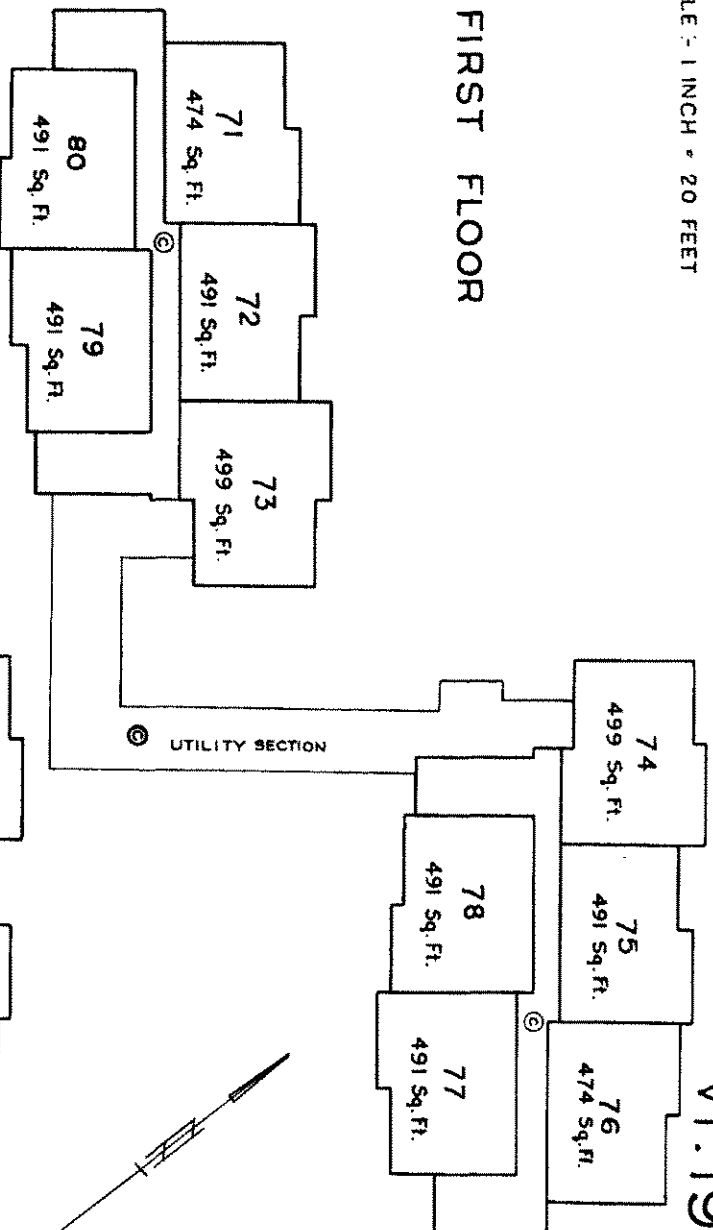
**STRATA LOTS  
BUILDING 'D'**

SCALE: 1 INCH = 20 FEET

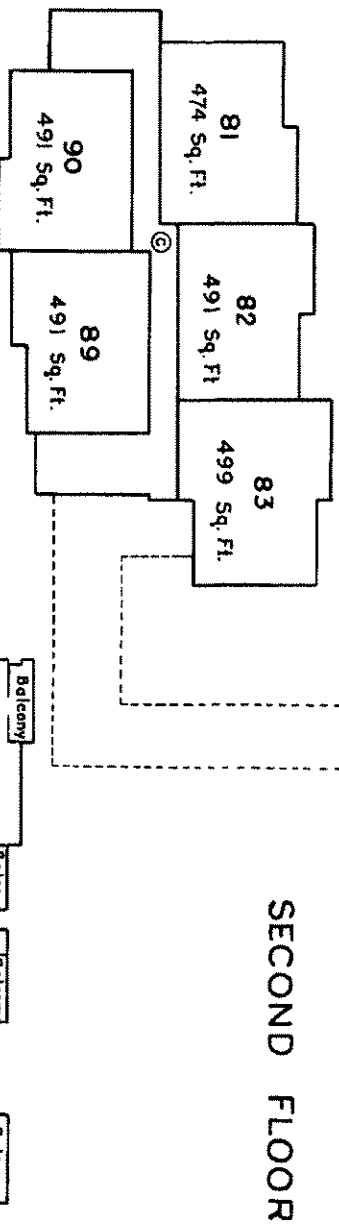
Sheet 16 of 20 Sheets

**Vr.191**

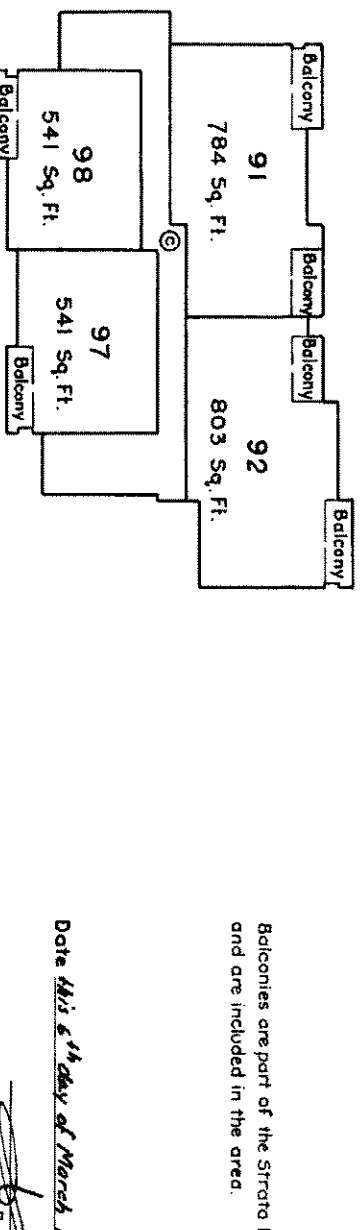
**FIRST FLOOR**



**SECOND FLOOR**



**THIRD FLOOR**



Balconies are part of the Strata Lots and are included in the area.

Date *this 6<sup>th</sup> day of March 1974*

*[Signature]*  
B.C.L.S.

STRATA TITLES ACT

STRATA PLAN **Vr191**

SECOND SHEET  
Sheet 6 of 20 Sheets

LOT No	SHEET No.	FORM 1	FORM 2	FORM 3
		SCHEDULE OF UNIT ENTITLEMENT UNIT ENTITLEMENT	SCHEDULE OF INTEREST UPON DESTRUCTION INTEREST UPON DESTRUCTION	SCHEDULE OF VOTING RIGHTS NUMBER OF VOTES
81	11,16	626	660	
82	11,16	650	660	
83	11,16	660	660	
84	11,16	660	660	
85	11,16	650	660	
86	11,16	626	660	
87	11,16	650	660	
88	11,16	650	660	
89	11,16	650	660	
90	11,16	650	660	
91	11,16	1036	950	
92	11,16	1060	950	
93	11,16	1060	950	
94	11,16	1036	950	
95	11,16	716	750	
96	11,16	716	750	
97	11,16	716	750	
98	11,16	716	750	
99	11,17	626	660	
100	11,17	650	660	
101	11,17	660	660	
102	11,17	660	660	
103	11,17	650	660	
104	11,17	626	660	
105	11,17	650	660	
106	11,17	650	660	
107	11,17	650	660	
108	11,17	650	660	
109	11,17	626	660	
110	11,17	650	660	
111	11,17	660	660	
112	11,17	660	660	
113	11,17	650	660	
114	11,17	626	660	
115	11,17	650	660	
116	11,17	650	660	
117	11,17	650	660	
118	11,17	650	660	
119	11,17	1036	950	
120	11,17	1060	950	

Dated this 5<sup>th</sup> day of Nov. 1974

  
B.C.D.

STRATA TITLES ACT

STRATA PLAN

Vr.191

SECOND SHEET  
Sheet 5 of 20 Sheets

LOT No.	SHEET No.	FORM 1	FORM 2	FORM 3
		SCHEDULE OF UNIT ENTITLEMENT	SCHEDULE OF INTEREST UPON DESTRUCTION	SCHEDULE OF VOTING RIGHTS
		UNIT ENTITLEMENT	INTEREST UPON DESTRUCTION	NUMBER OF VOTES
41	10, 14	716	750	
42	10, 14	716	750	
43	10, 15	626	660	
44	10, 15	650	660	
45	10, 15	660	660	
46	10, 15	660	660	
47	10, 15	650	660	
48	10, 15	626	660	
49	10, 15	650	660	
50	10, 15	650	660	
51	10, 15	650	660	
52	10, 15	650	660	
53	10, 15	626	660	
54	10, 15	650	660	
55	10, 15	660	660	
56	10, 15	660	660	
57	10, 15	650	660	
58	10, 15	626	660	
59	10, 15	650	660	
60	10, 15	650	660	
61	10, 15	650	660	
62	10, 15	650	660	
63	10, 15	1036	950	
64	10, 15	1060	950	
65	10, 15	1060	950	
66	10, 15	1036	950	
67	10, 15	716	750	
68	10, 15	716	750	
69	10, 15	716	750	
70	10, 15	716	750	
71	11, 16	626	660	
72	11, 16	650	660	
73	11, 16	660	660	
74	11, 16	660	660	
75	11, 16	650	660	
76	11, 16	626	660	
77	11, 16	650	660	
78	11, 16	650	660	
79	11, 16	650	660	
80	11, 16	650	660	

Dated this 5<sup>th</sup> day of April 1974

*[Signature]*

STRATA TITLES ACT

STRATA PLAN Vr191

SECOND SHEET  
Sheet 4 of 20 Sheets

LOT No.	SHEET No.	FORM 1	FORM 2	FORM 3
		SCHEDULE OF UNIT ENTITLEMENT	SCHEDULE OF INTEREST UPON DESTRUCTION	SCHEDULE OF VOTING RIGHTS
		UNIT ENTITLEMENT	INTEREST UPON DESTRUCTION	NUMBER OF VOTES
1	8,13	626	660	
2	8,13	650	660	
3	8,13	660	660	
4	8,13	660	660	
5	8,13	650	660	
6	8,13	626	660	
7	8,13	650	660	
8	8,13	650	660	
9	8,13	650	660	
10	8,13	650	660	
11	8,13	626	660	
12	8,13	650	660	
13	8,13	660	660	
14	8,13	660	660	
15	8,13	650	660	
16	8,13	626	660	
17	8,13	650	660	
18	8,13	650	660	
19	8,13	650	660	
20	8,13	650	660	
21	9,13	1036	950	
22	9,13	1060	950	
23	9,13	1060	950	
24	9,13	1036	950	
25	9,13	716	750	
26	9,13	716	750	
27	9,13	716	750	
28	9,13	716	750	
29	10,14	660	660	
30	10,14	650	660	
31	10,14	626	660	
32	10,14	650	660	
33	10,14	650	660	
34	10,14	660	660	
35	10,14	650	660	
36	10,14	626	660	
37	10,14	650	660	
38	10,14	650	660	
39	10,14	1060	950	
40	10,14	1036	950	

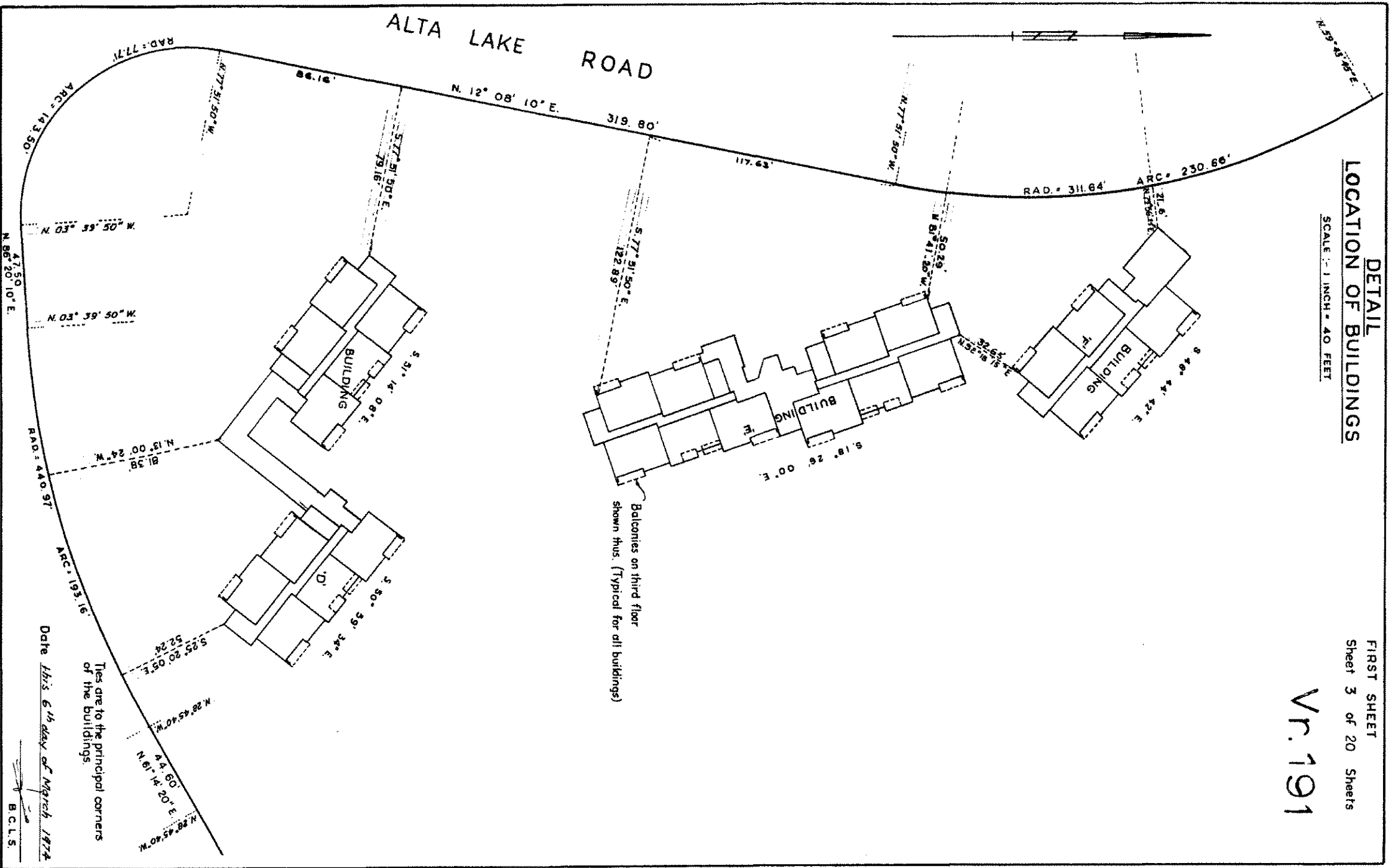
Dated this 5<sup>th</sup> day of Nov. 1974  
B.C.L.S.

**DETAIL  
LOCATION OF BUILDINGS**

SCALE: 1" = 40 FEET

FIRST SHEET  
Sheet 3 of 20 Sheets

Vr. 191



Ties are to the principal corners of the buildings.

Date *11:55* 6<sup>th</sup> day of March 1974

B.C.L.S.

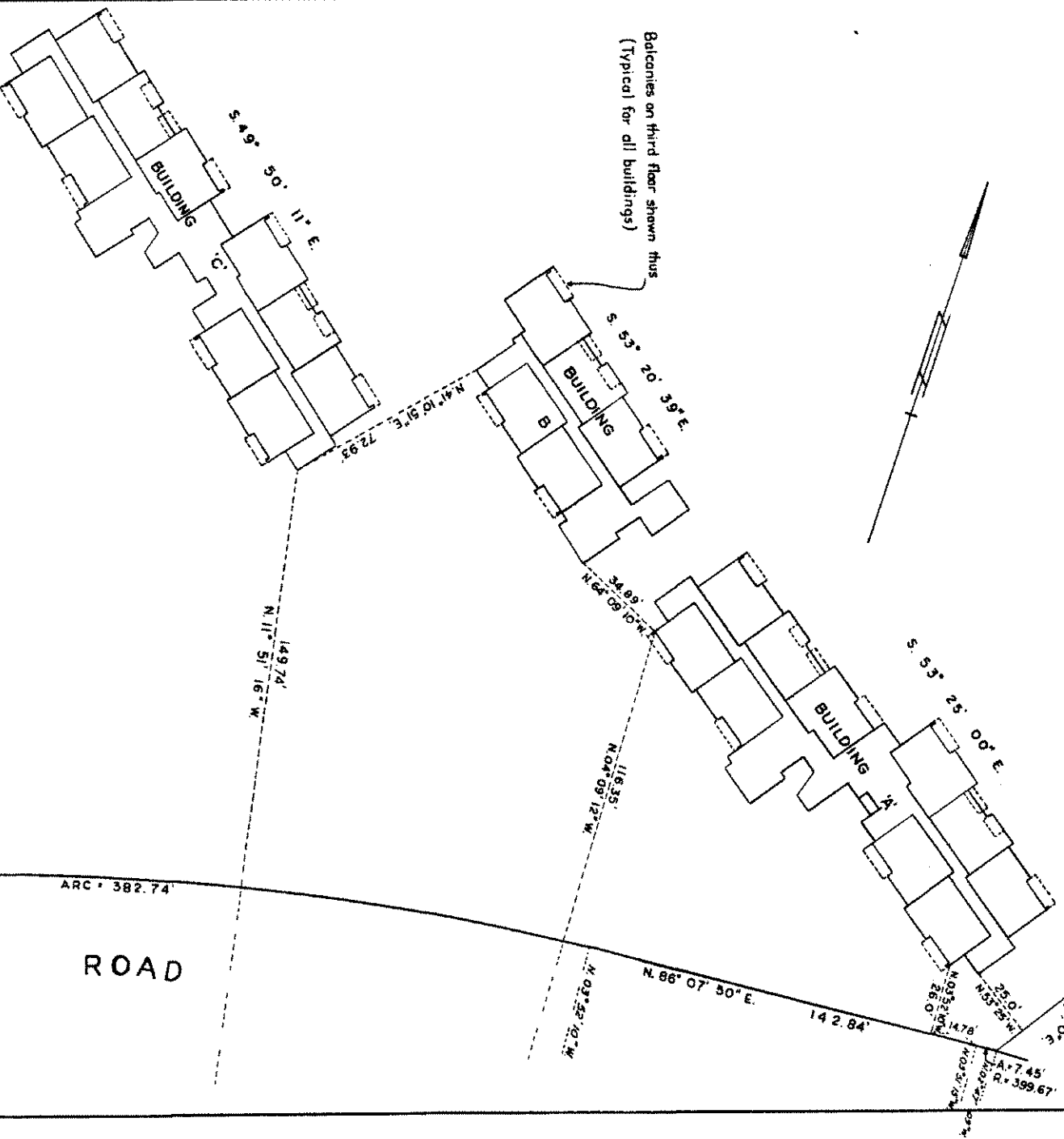
J - 160-73

**DETAIL  
LOCATION OF BUILDINGS**

SCALE - 1 INCH = 40 FEET

FIRST SHEET  
Sheet 2 of 20 Sheets

**Vr.191**



Ties are to the principal corners of the buildings.

Date: 11/15 6<sup>th</sup> day of March 1974  
44.60' N. 28° 49' 40" W.  
44.60'  
N. 61° 42' 00"

RAD. = 861.02'    ARC = 382.74'

**ALTA LAKE ROAD**

J-160-73  
B.C.L.S.

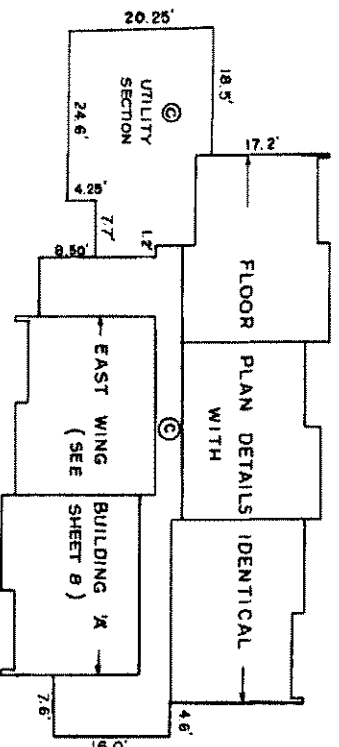
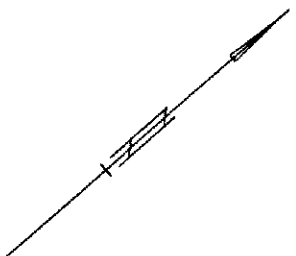


**BUILDING 'F'**  
**FLOOR PLAN DETAIL**  
**FIRST AND SECOND FLOORS**

SCALE: 1/4" = 1' - 0"

Sheet 12 of 20 Sheets

Vr. 191



NOTE: FIRST AND SECOND FLOORS  
ARE IDENTICAL WITH FIRST AND  
SECOND FLOORS OF THE EAST WING  
OF BUILDING 'X'

**BUILDING 'F'**  
**THIRD FLOOR**

**FLOOR PLAN DETAIL IDENTICAL WITH THIRD FLOOR  
OF EAST WING OF BUILDING 'A'**

SEE SHEET 9

FOR STRATA LOT DETAIL OF BUILDING 'F'  
SEE SHEET 18

Date *14<sup>th</sup> day of March 1974*

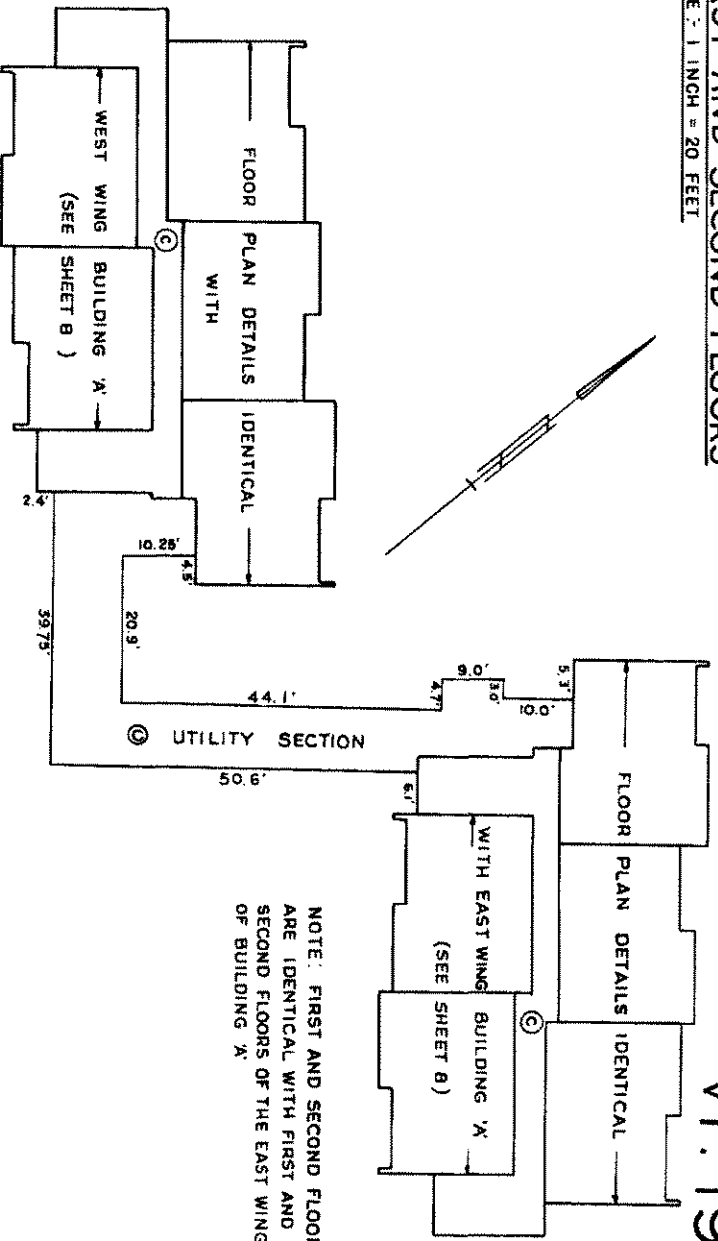
*[Signature]*  
B.C.L.S.

J-160-73

**BUILDING 'D'**  
**FLOOR PLAN DETAIL**  
**FIRST AND SECOND FLOORS**  
 SCALE: 1/4" = 20 FEET

Sheet 11 of 20 Sheets

**Vr. 191**



NOTE: FIRST AND SECOND FLOORS ARE IDENTICAL WITH FIRST AND SECOND FLOORS OF THE EAST WING OF BUILDING 'A'.

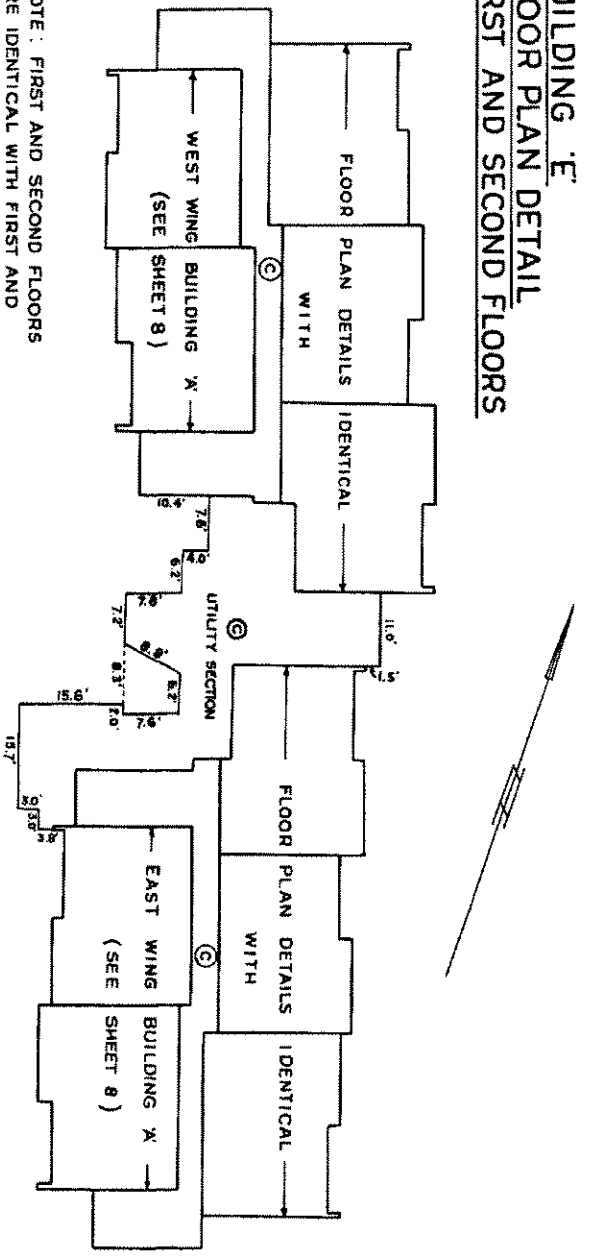
NOTE: FIRST AND SECOND FLOORS ARE IDENTICAL WITH FIRST AND SECOND FLOORS OF THE WEST WING OF BUILDING 'A'.

FOR STRATA LOT DETAIL OF BUILDING 'D' SEE SHEET 16

**BUILDING 'D'**  
**THIRD FLOOR**

**FLOOR PLAN DETAIL IDENTICAL WITH THIRD FLOOR OF BUILDING 'A'** (SEE SHEET 9)

**BUILDING 'E'**  
**FLOOR PLAN DETAIL**  
**FIRST AND SECOND FLOORS**



NOTE: FIRST AND SECOND FLOORS ARE IDENTICAL WITH FIRST AND SECOND FLOORS OF THE EAST WING OF BUILDING 'A'.

NOTE: FIRST AND SECOND FLOORS ARE IDENTICAL WITH FIRST AND SECOND FLOORS OF THE WEST WING OF BUILDING 'A'.

**BUILDING 'E'**  
**THIRD FLOOR**

**FLOOR PLAN DETAIL IDENTICAL WITH THIRD FLOOR OF BUILDING 'A'** (SEE SHEET 9)

FOR STRATA LOT DETAIL BUILDING 'E' SEE SHEET 17

Date his 6<sup>th</sup> day of March 1974

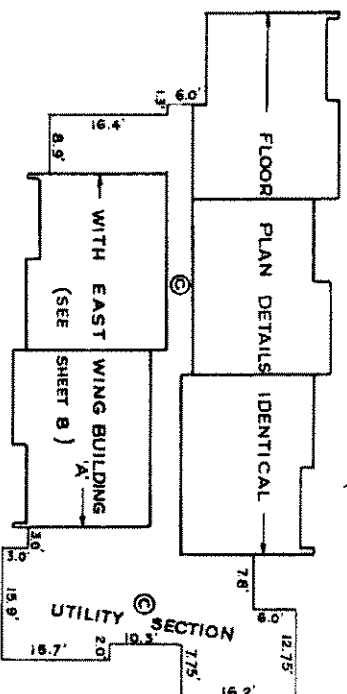
*[Signature]*  
 B.C.L.S.

**BUILDING 'B'**  
**FLOOR PLAN DETAIL**  
**FIRST AND SECOND FLOORS**

Sheet 10 of 20 Sheets

SCALE: 1 INCH = 20 FEET

Vr.191



**NOTE:**  
FIRST AND SECOND FLOORS ARE IDENTICAL WITH FIRST AND SECOND FLOORS OF THE EAST WING OF BUILDING 'A'.  
(SEE SHEET 8 )

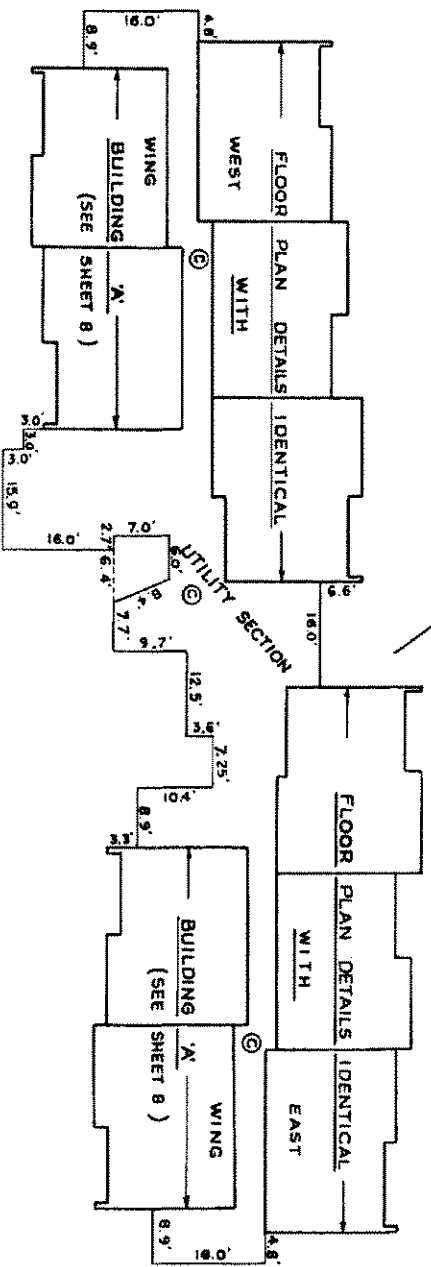
**BUILDING 'B'**  
**FLOOR PLAN DETAIL IDENTICAL WITH THIRD FLOOR OF**  
**THIRD FLOOR**  
**EAST WING OF BUILDING 'A'** (SEE SHEET 9 )

ELEVATIONS IDENTICAL WITH EAST WING OF BUILDING 'A'.  
PERSPECTIVE VIEWS IDENTICAL WITH REVERSED VIEW OF WEST WING OF BUILDING 'A'.

FOR STRATA LOT DETAIL BUILDING 'B'.  
SEE SHEET 14

**BUILDING 'C'**  
**FLOOR PLAN DETAIL**  
**FIRST AND SECOND FLOORS**

**NOTE:** FIRST AND SECOND FLOORS  
ARE IDENTICAL WITH FIRST AND SECOND FLOORS  
OF BUILDING 'A'. (SEE SHEET )



**BUILDING 'C'**  
**FLOOR PLAN DETAIL IDENTICAL WITH THIRD FLOOR OF**  
**THIRD FLOOR**  
**BUILDING 'A'** (SEE SHEET 9 )

ELEVATIONS IDENTICAL WITH BUILDING 'A' EXCEPT FOR UTILITY SECTION.  
PERSPECTIVE VIEWS IDENTICAL WITH BUILDING 'A'.

FOR STRATA LOT DETAIL BUILDING 'C'.  
SEE SHEET 15

Date: *15<sup>th</sup> day of March 1974*

8.C.L.S.  
*[Signature]*

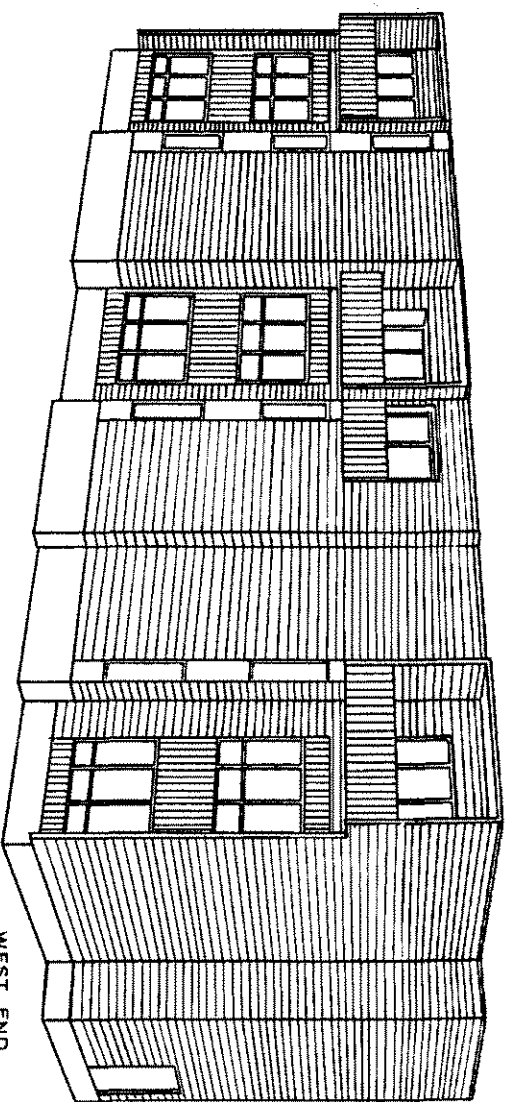
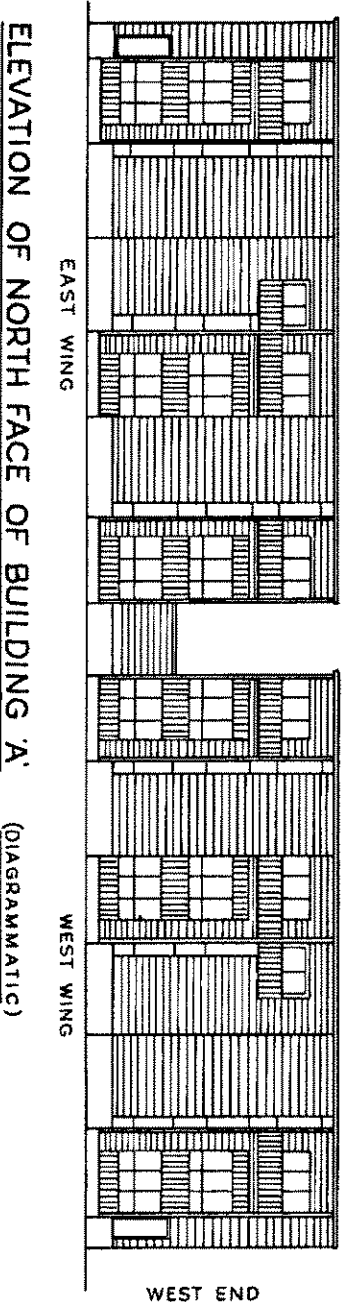
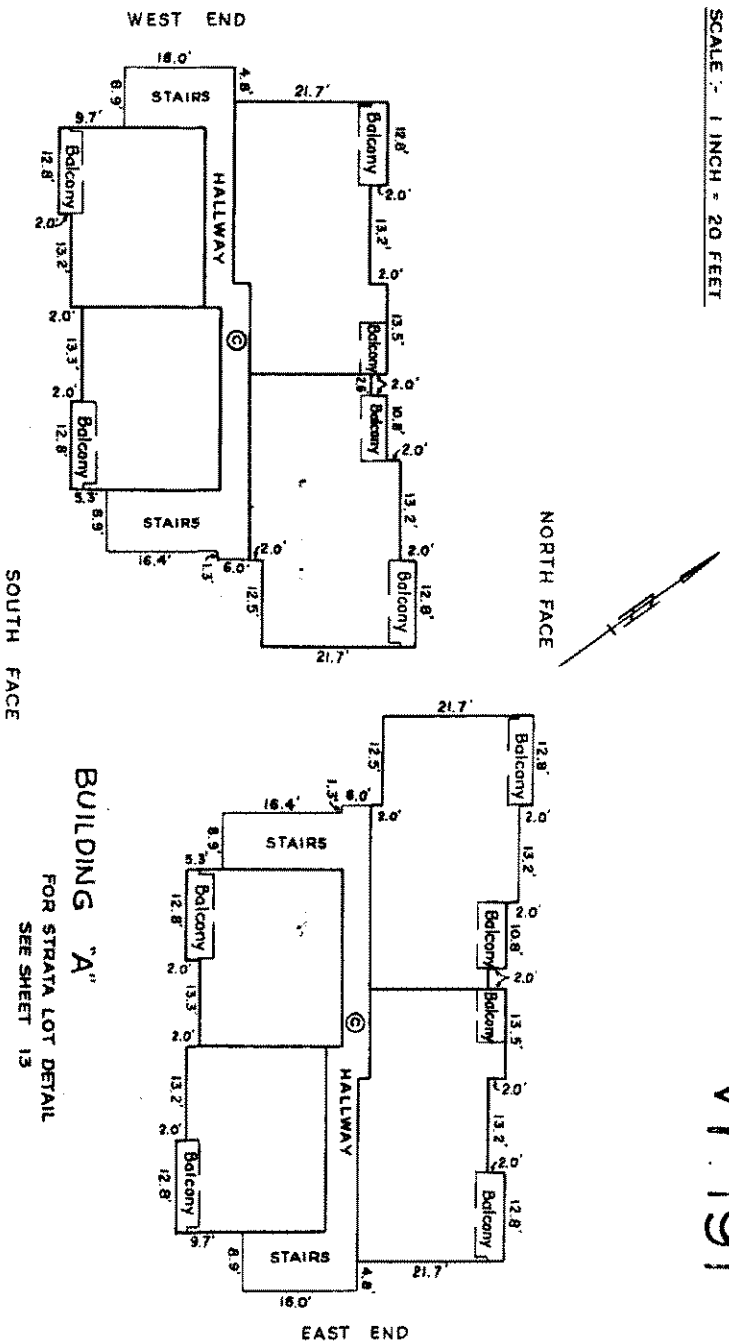
J-160-73

**BUILDING 'A'**  
**FLOOR PLAN DETAIL**  
**THIRD FLOOR**

SCALE - 1 INCH = 20 FEET

Sheet 9 of 20 Sheets

Vr 191



**PERSPECTIVE VIEW - NORTH FACE - WEST WING**  
**BUILDING 'A'**  
 (DIAGRAMMATIC)  
 (EXCLUDING UTILITY SECTION)

Date: *Edis 6<sup>th</sup> day of March 1974*

B.C.L.S.

J-160-73