

# FEATURES & AMENITIES

## CAPTIVATING EXTERIORS

- 4 storey wood frame construction
- Balconies offering breath-taking views available with every suite
- Exterior finishings including hardie plank siding and trims with prominent use of natural stone to blend with natural environment

## RICH AND CONTEMPORARY INTERIORS

- Your choice of two designer selected colour and finish palettes:
  - Cheekeye:** A warm palette of neutral earth-toned finishings, with two choices of kitchen backsplash and counter colour schemes
  - Chief:** A crisp and modern palette of white and stone coloured finishings, with European porcelain tile accents
- A variety of flexible floor plans ranging from 500 to 1257 square feet to fit your lifestyle
- 9' ceilings throughout, giving all areas of your home an open and spacious feeling
- Expansive windows overlooking the surrounding natural landscapes
- Easy to maintain laminate hardwood flooring throughout entry, kitchen, dining, living and den areas
- Richly textured carpeting in bedrooms
- Spacious master suite with walk-in-closet with select floor plans
- Large windows ensure abundant natural light
- Energy efficient front load washer and dryer with every home

## EUROPEAN STYLE KITCHENS

- Cabinetry as per the CHEEKEYE or CHIEF scheme, with soft close hardware and elegant cabinet pulls
- Innovative kitchen design with upper wall cabinets for extra storage
- Undermount stainless steel sink with brushed satin finish, featuring a contemporary polished chrome faucet with jet pull-down spray
- Engineered quartz countertops
- Energy efficient, stainless steel kitchen appliance package including:
  - over-the-range microwave hood fan combination, super capacity dishwasher, top mount fridge, and self-clean range with built in oven and ceramic glass cooktop

## EXQUISITE BATHROOMS

- Contemporary porcelain tile floor throughout all bathrooms
- Elongated bathroom mirrors with built in medicine cabinet
- Polished chrome fixtures throughout
- Marble countertops in ensuite with ceramic tiling and marble tile accents
- Five piece ensuites featuring dual sinks, soaker tub and large walk-in shower in certain plans
- Dual flush bathroom toilet
- Stylish rain showerhead

## NATURAL LANDSCAPING

- Large common amenity patio with contemporary furnishings and a gazebo for entertaining guests
- Privacy planting around each patio
- Convenient downtown location, nestled between parkland and a natural estuary, providing privacy and stunning natural surroundings

## PEACE OF MIND

- Rain screen construction technology and protection
- Secured underground parking and elevator access for residents
- Access granted to building through secured, electronic phone
- Hard wired in-suite smoke detectors and sprinklers
- 2-5-10 years warranty coverage provided by National Home Warranty

## ADDITIONAL FEATURES & AMENITIES

- Amenity room with a fully equipped kitchen and an 84" high definition television for entertaining guests, hosting meetings, or watching the big game!
- Pre-wiring in all suites for cable and high speed internet access
- Energy efficient double glazed vinyl frame windows with Low-E coating

**PARK  
HOUSE**  
condominiums

2 BEDROOM/DEN 785 SQFT PLAN A8 3RD FLOOR

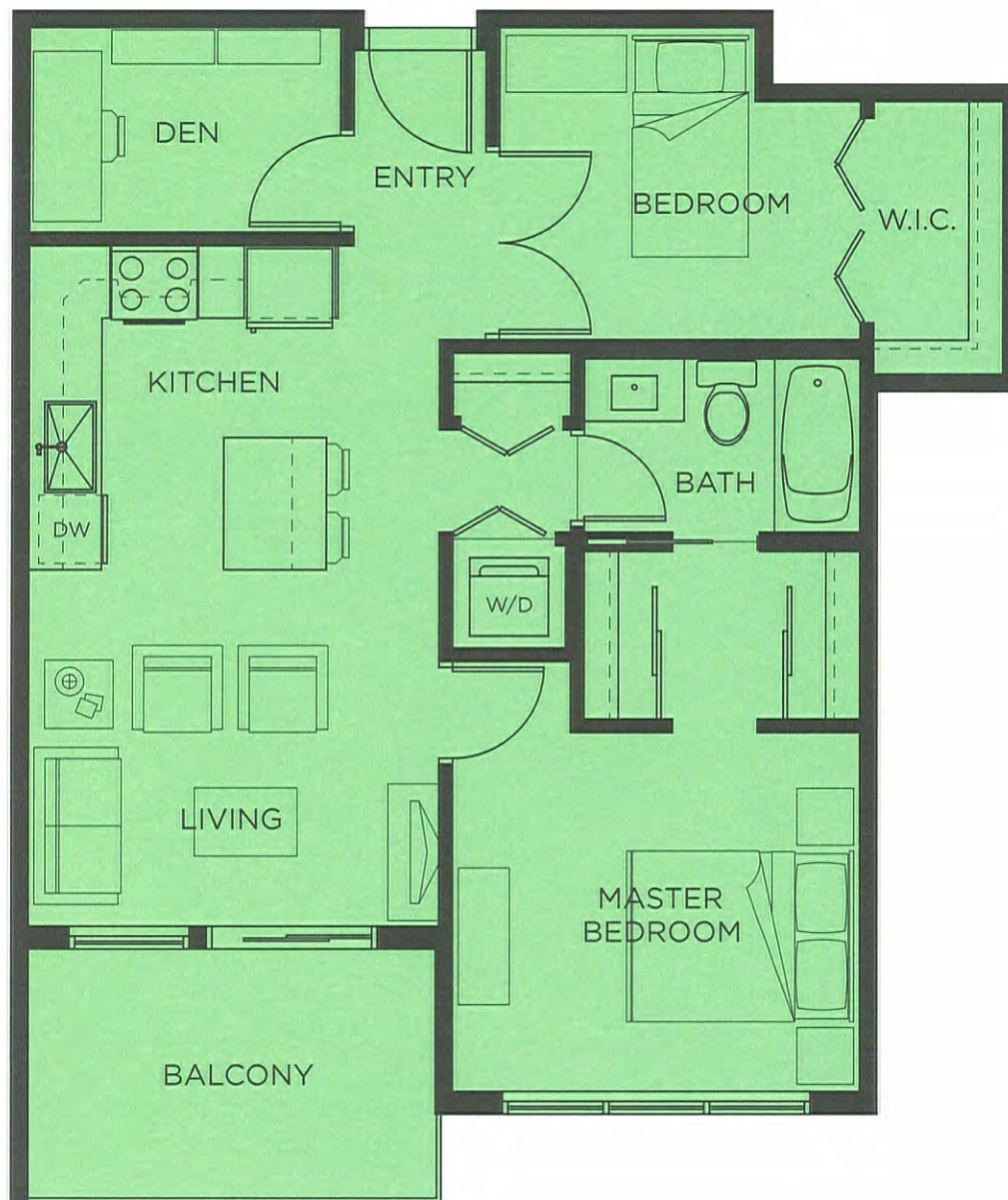
\*\$342,500\* LIFT UPFRONT \*\*\$350,000 LIFT AT CLOSING\*\*

# PLAN A8

## 2 BED + DEN

Approx 785 sq ft

Units: 208, 308, 313,  
407, 412, 507, 511



2 BEDROOM/FLEX 888 SQFT PLAN A9 ON 4TH FLOOR

\*\$385,000\* LIFT UPFRONT \*\*\$392,500 LIFT AT CLOSING\*\*

2 BEDROOM/FLEX 888 SQFT PLAN A9 ON 3RD FLOOR

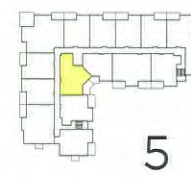
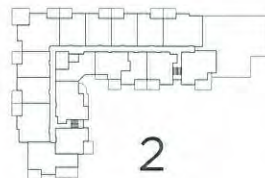
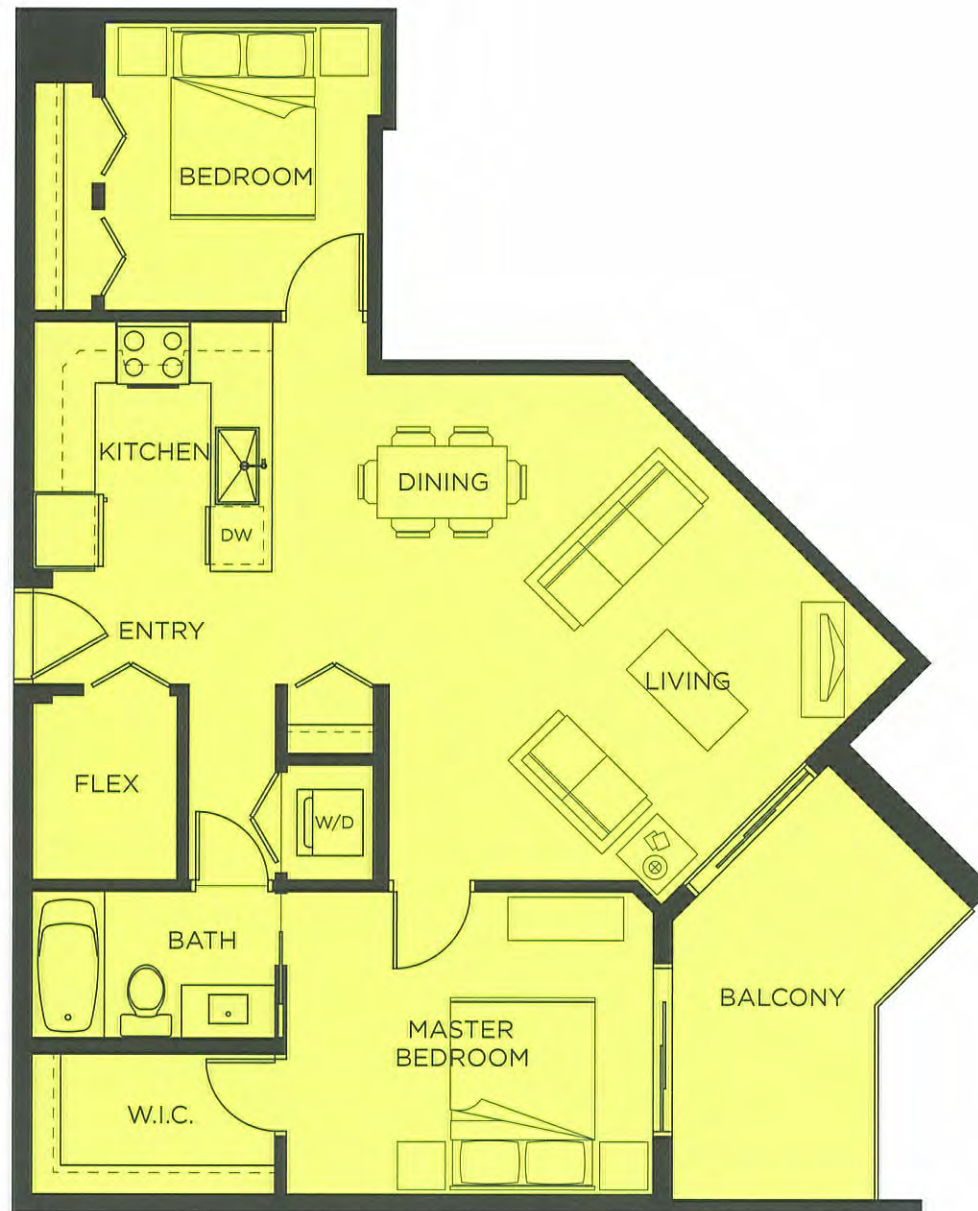
\*\$375,000\* LIFT UPFRONT \*\*\$382,500 LIFT AT CLOSING\*\*

## PLAN A9

2 BED + FLEX

Approx 888 sq ft

Units: 312, 411, 510



**PARK**  
**HOUSE**  
condominiums