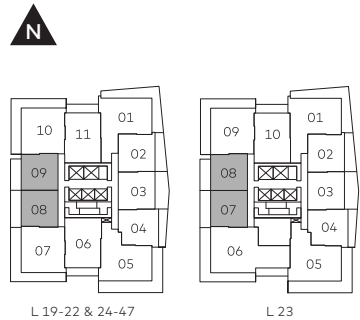


A1

1 BEDROOM
1 BATH

Indoor 538 SF
Outdoor 136-156 SF
Total Living Space 674-694 SF



A2

1 BEDROOM
1 BATH

Indoor 555 SF
Outdoor 166 SF
Total Living Space 721 SF



L 19-22 & 24-47



L 23



L 48-52



0 1 2 3 4 5 10 FT

A3

1 BEDROOM
1 BATH

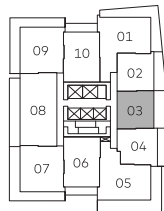
Indoor	555 SF
Outdoor	199 SF
Total Living Space	754 SF



L 19-22 & 24-47



L 23



L 48-52



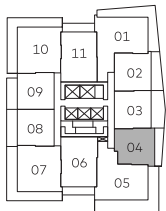
0 1 2 3 4 5 10 FT



A4

1 BEDROOM
1 BATH

Indoor 563 SF
Outdoor 104 SF
Total Living Space 667 SF



L 19-22 & 24-47



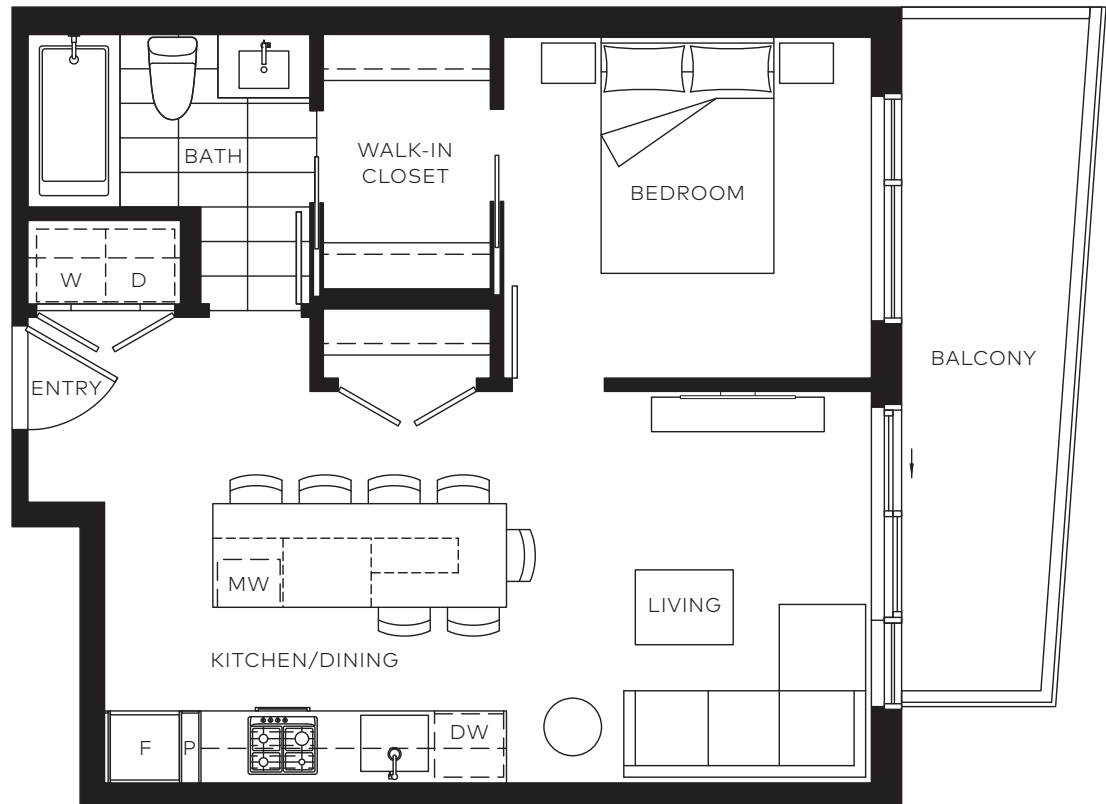
L 23



L 48-52



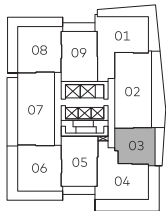
0 1 2 3 4 5 10 FT



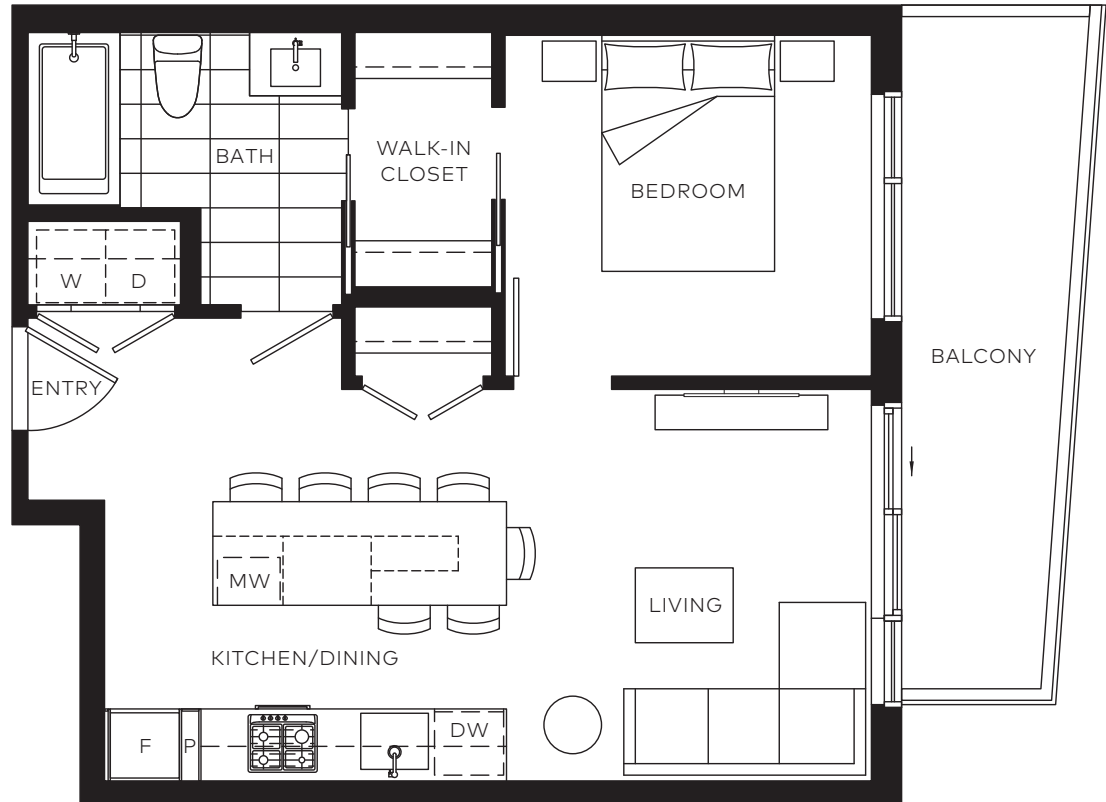
A5*

1 BEDROOM
1 BATH

Indoor	564 SF
Outdoor	104 SF
Total Living Space	668 SF



L 4-18



*Future friendly home



0 1 2 3 4 5 10 FT

B1*

2 BEDROOM
2 BATH

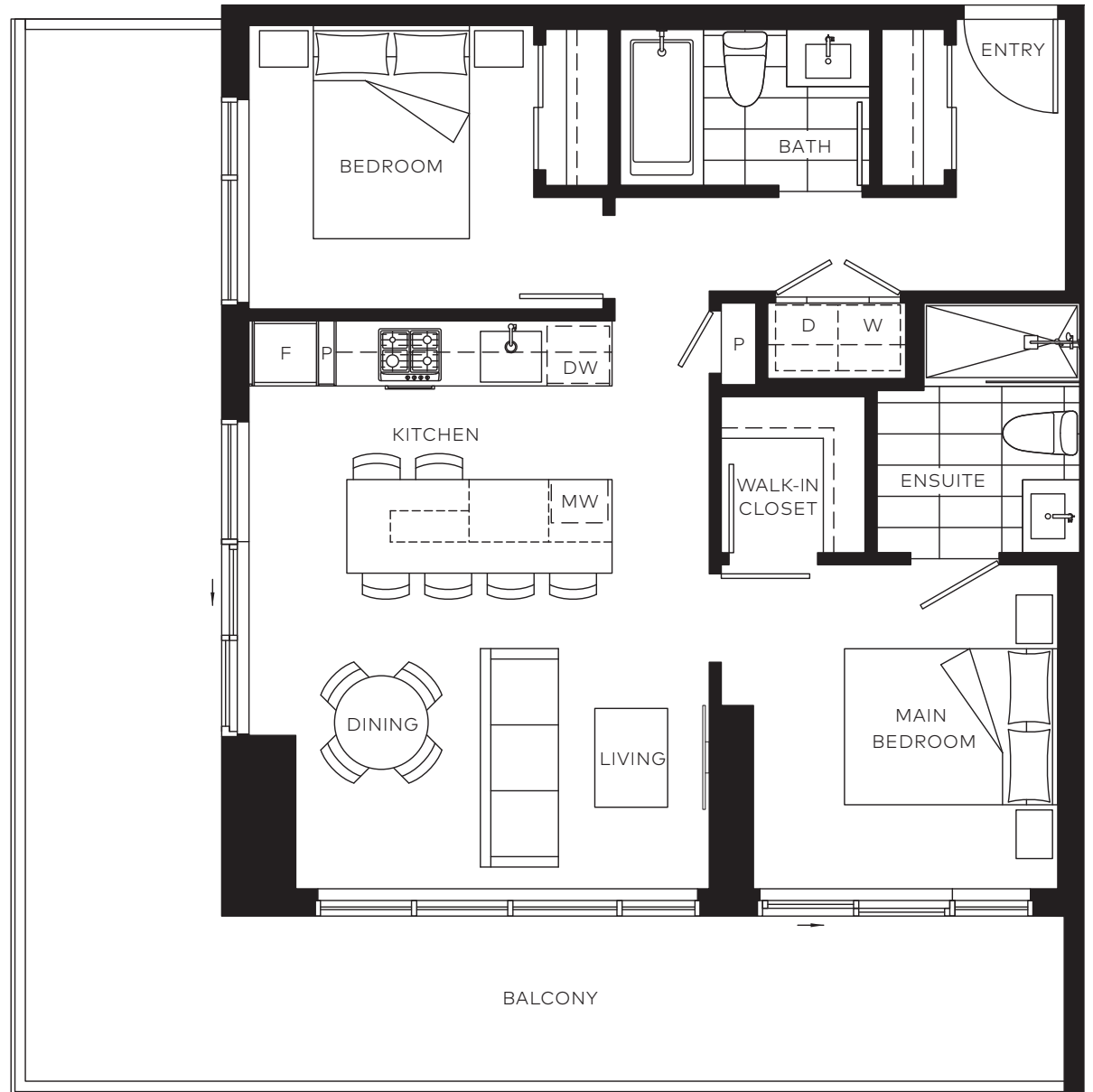
Indoor	800 SF
Outdoor	381-387 SF
Total Living Space	1,181-1,187 SF



L 4-18



0 1 2 3 4 5 10 FT



*Future friendly home

B2

2 BEDROOM
2 BATH

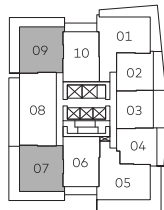
Indoor 793-800 SF
Outdoor 381-387 SF
Total Living Space 1,174-1,187 SF



L 19-22 & 24-47



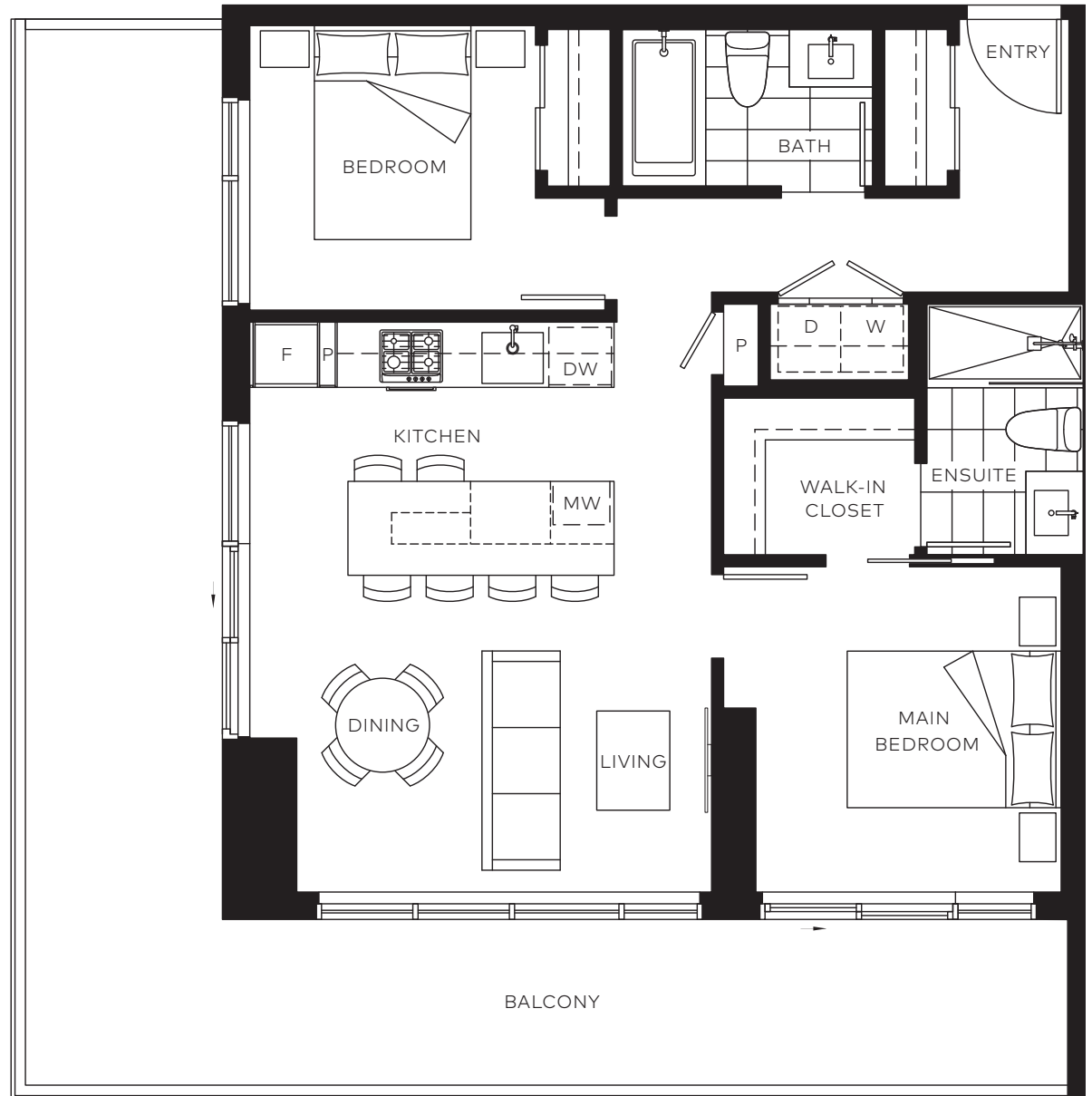
L 23



L 48-52



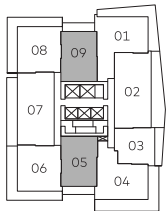
0 1 2 3 4 5 10 FT



B3*

2 BEDROOM
2 BATH

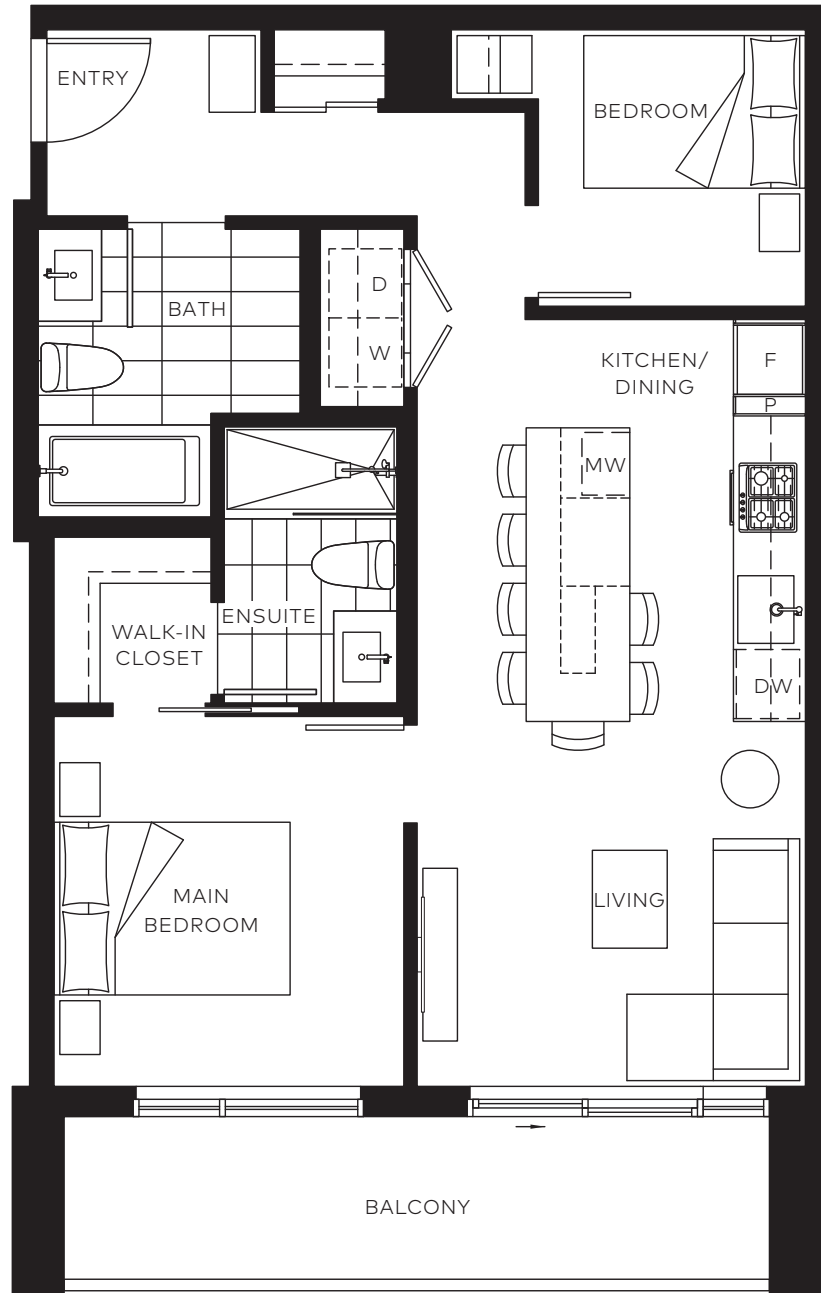
Indoor	732-737 SF
Outdoor	106-112 SF
Total Living Space	838-849 SF



L 4-18



0 1 2 3 4 5 10 FT



*Future friendly home

THE AMAZING

BRENTWOOD

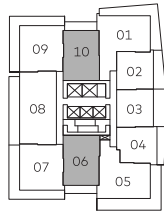
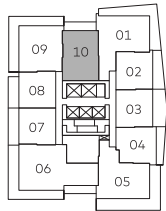
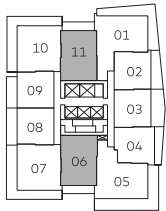
A SHAPE CENTRE

TOWER 5

B4

2 BEDROOM 2 BATH

Indoor 732-744 SF
 Outdoor 106-112 SF
 Total Living Space 838-856 SF



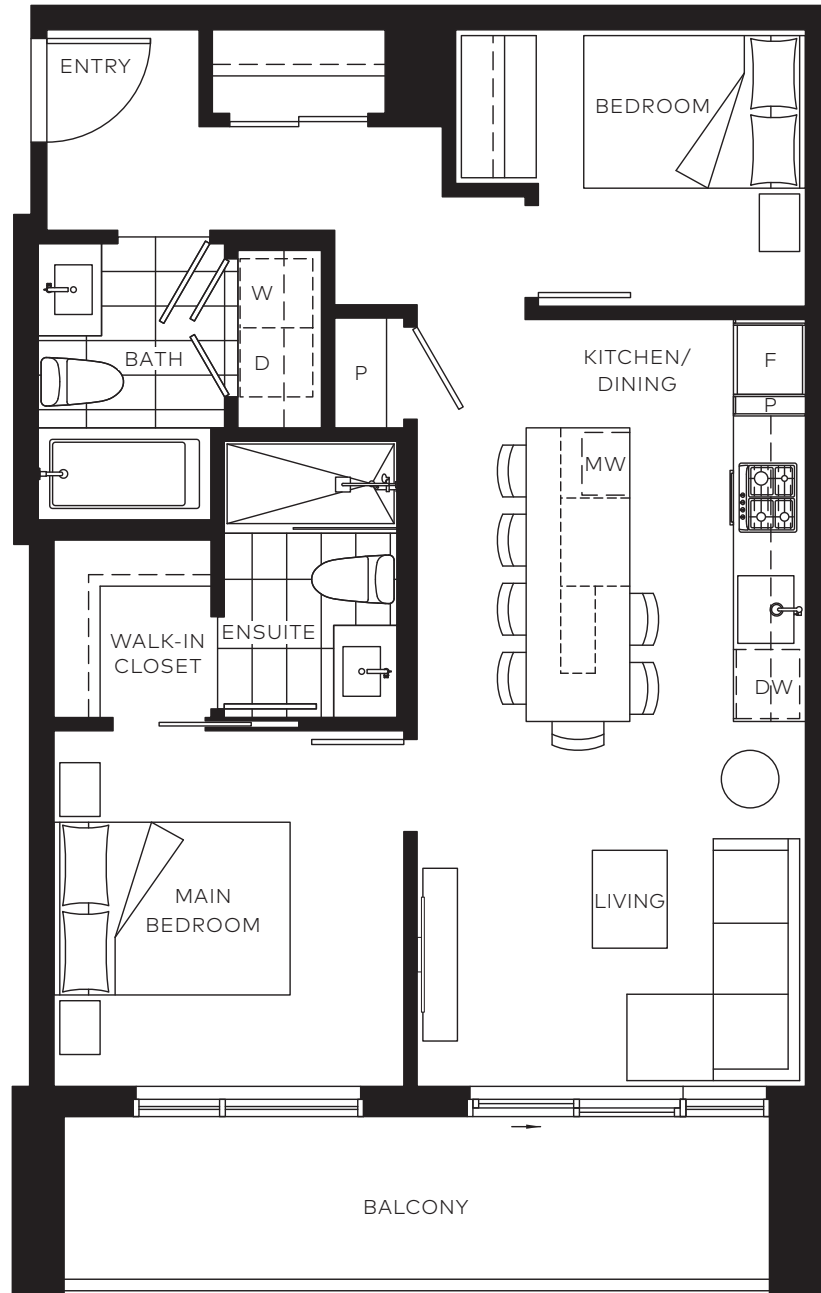
L 19-22 & 24-47

L 23

L 48-52



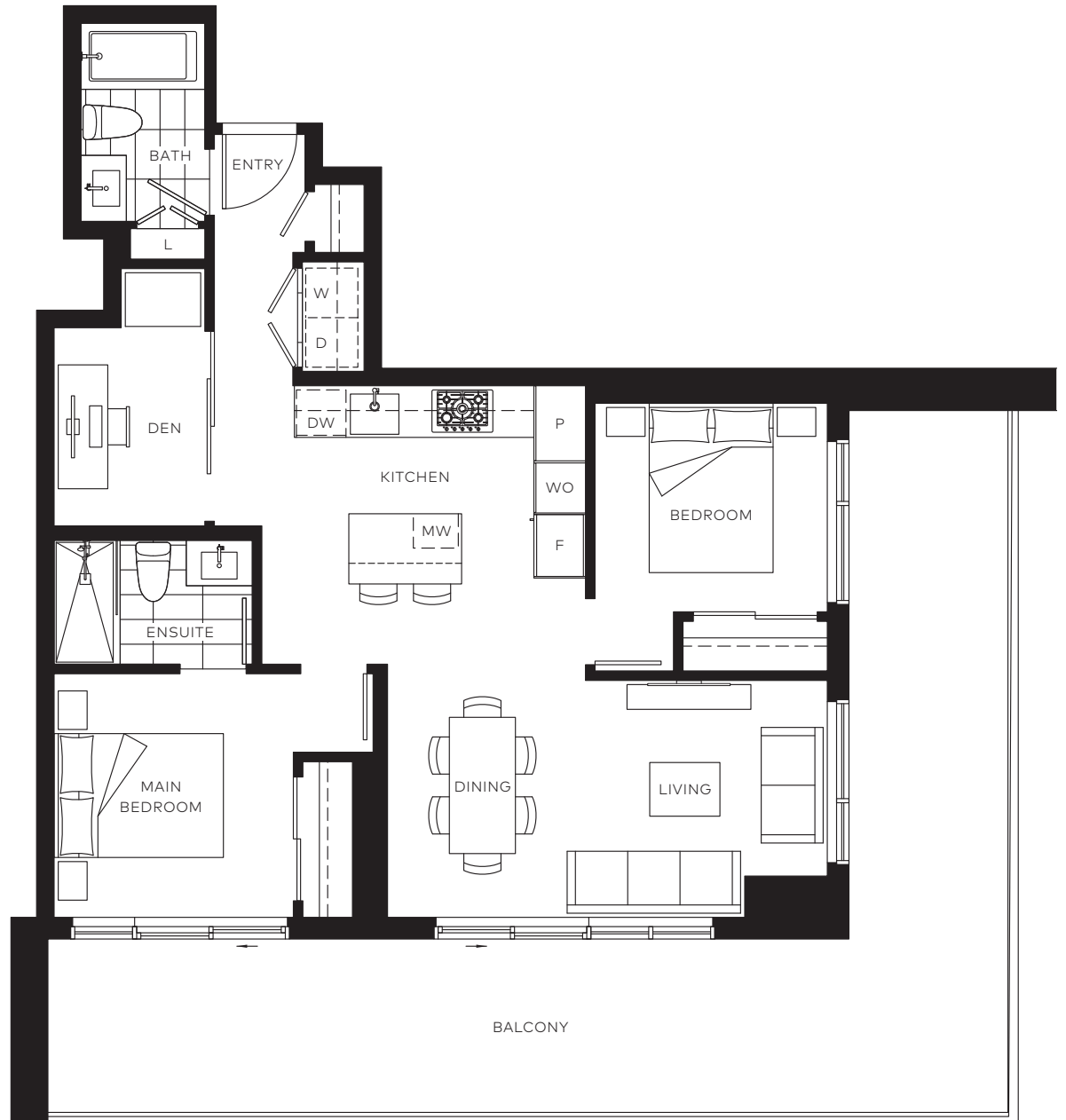
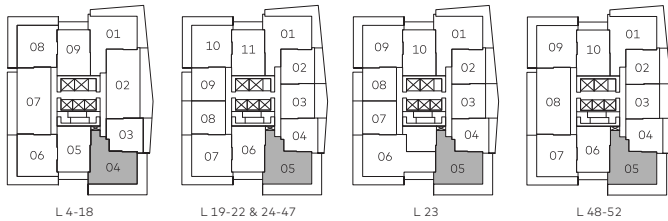
0 1 2 3 4 5 10 FT



BB1

2 BEDROOM + DEN
2 BATH

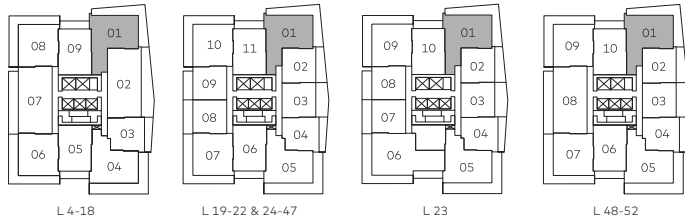
Indoor 905 SF
Outdoor 408 SF
Total Living Space 1,313 SF



BB2

2 BEDROOM + DEN
2 BATH

Indoor 912-929 SF
Outdoor 362 SF
Total Living Space 1,274-1,291 SF



THE AMAZING

B R E
N T W
O O D

A SHAPE CENTRE

TOWER 5

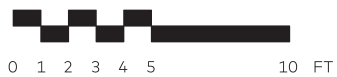
BB3

2 BEDROOM + DEN
2 BATH

Indoor	1,075 SF
Outdoor	293 SF
Total Living Space	1,368 SF



L 48-52



THE AMAZING

BRENTWOOD

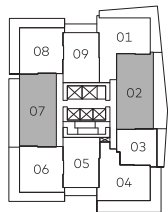
A SHAPE CENTRE

TOWER 5

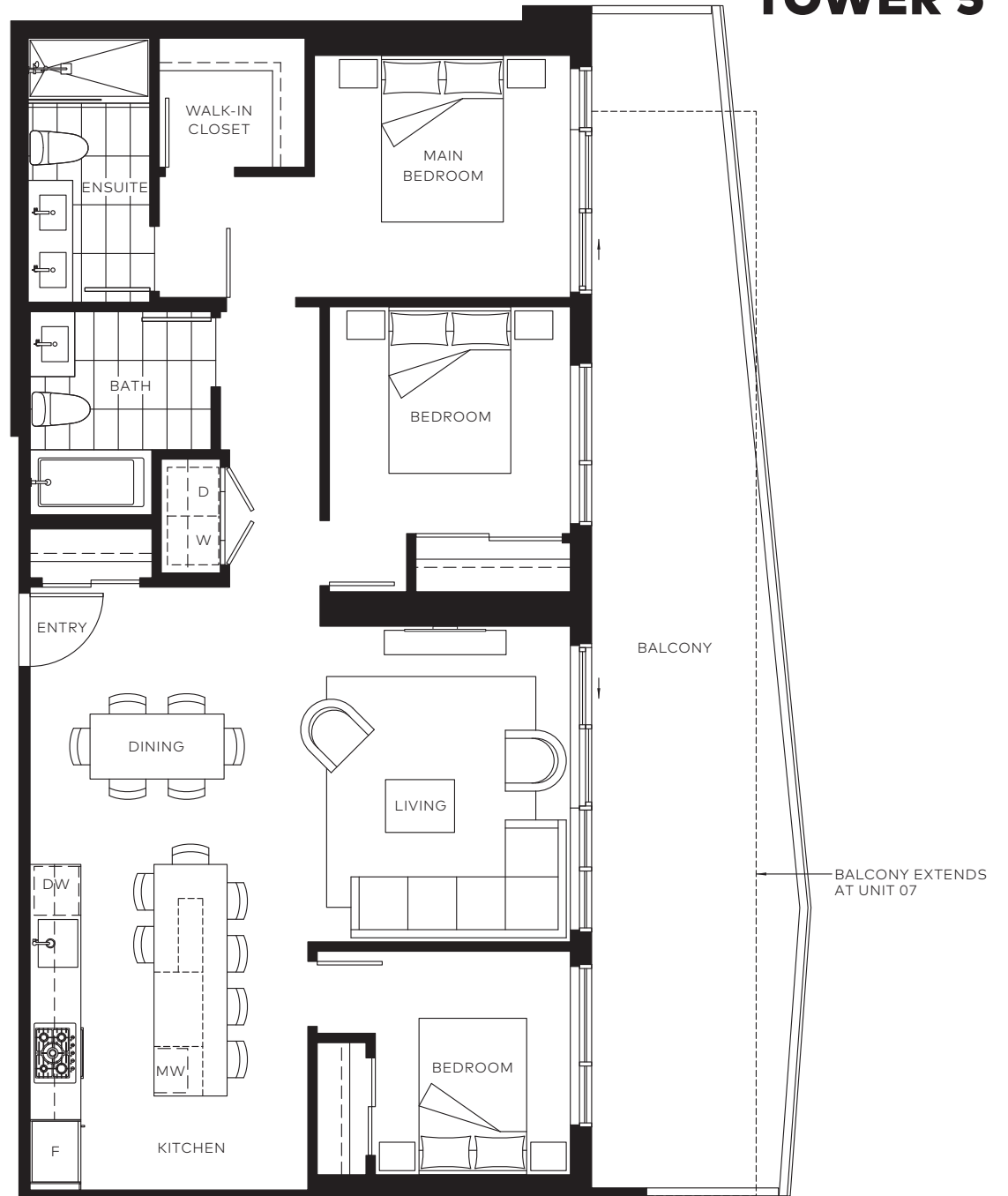
C1*

3 BEDROOM
2 BATH

Indoor	1,075-1,112 SF
Outdoor	293-365 SF
Total Living Space	1,368-1,477 SF



L 4-18



BALCONY EXTENDS AT UNIT 07

*Future friendly home

THE AMAZING

BRENTWOOD

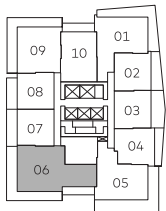
A SHAPE CENTRE

TOWER 5

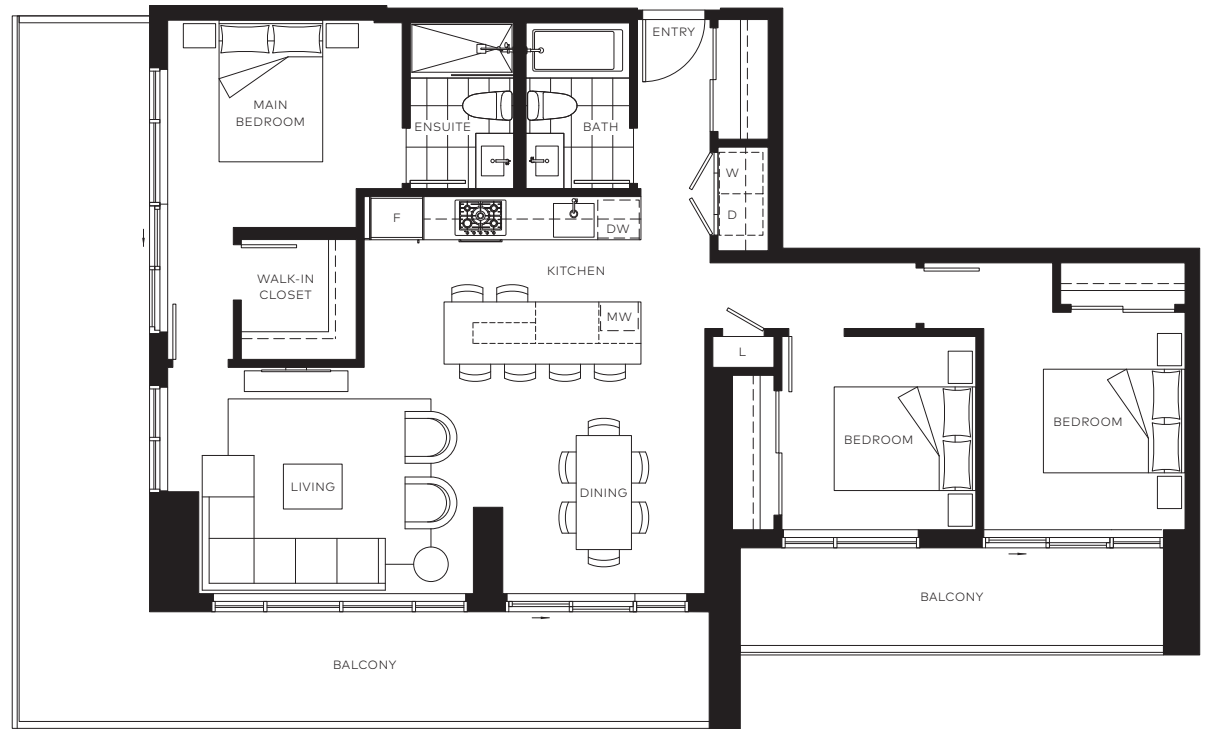
C2

3 BEDROOM
2 BATH

Indoor 1,153 SF
Outdoor 493 SF
Total Living Space 1,646 SF



L 23



TOWER 5 FEATURES

METRO VANCOUVER'S MOST CELEBRATED DESTINATION

The Amazing Brentwood is a world-class community pioneering a new model for how we live, shop and invest in the region.

Next-door access to the amazing energy, activity and experience of Neighbourhood One:

- A 28-acre shopping, dining and entertainment district
- SkyTrain seamlessly integrated on-site, making downtown Vancouver 20 minutes away
- 400,000 SF of market-leading fashion, dining and entertainment venues
- A 1-acre signature plaza with walkable streets and year-round entertainment and events

Neighbourhood Two is the next frontier of design, innovation and opportunity at The Amazing Brentwood

- A total of 800+ new homes in Neighbourhood Two
- The Neighbourhood Two streetscape will welcome 58,000 SF of top-tier retail and exciting new restaurant concepts
- Tower 5 is the first chance to invest in Neighbourhood Two

THOUGHTFUL HOME DESIGN

Tower 5 includes timelessly designed 1-, 2- and 3-bedroom homes as well as soaring penthouses.

- Architecture by IBI Group
- Interior Design by Bob's Your Uncle Design
- Stone thresholds into every home
- Choose from 2 colour schemes – Classic Grey or Timeless White
- 9'0" ceilings in main living areas
- European laminate flooring throughout the home
- Miele side-by-side washer and dryer, and a complete laundry area with built-in shelving, a hanging rod and convenient work surface
- Flexible nook space that can easily convert into a home office, beverage station or storage space*
- Roller shades in living area and bedrooms for light control and privacy
- Slim profile ceiling light fixtures (LED) in all bedrooms
- Smart home thermostat included in every home
- Secure backing pre-built into the living room and main bedroom walls for easy TV wall-mount installation
- Thoughtfully placed, convenient 4-plug outlets in all bedrooms
- Central, individually controlled heating and air-conditioning system
- Wireless key entry system in all homes
- Electrical outlet on all balconies
- Expansive terraces and balconies for seamless indoor-outdoor living

REVOLUTIONARY KITCHEN DESIGN

Centred around a massive island up to 9'6", the new SHAPE kitchen unlocks endless possibilities for cooking, entertaining, dining, working and living unlike anything in the market to-date.

- Full-height European cabinetry with soft-close hardware
- Continuous solid slab backsplash
- German quality Blanco stainless steel undermount sink
- Polished chrome Blanco faucet with a pull-down spray spout and magnetized hand spray holder for ease of use
- Recessed lighting throughout the kitchen and dimmable pendant light fixture over the island for added ambience
- Convenient in-cabinet recycling station
- 8'6" - 9'6" kitchen islands to revolutionize the way you entertain, cook, eat, work and live
- Kitchen islands feature a striking stone waterfall to create a seamless flow
- 1.2" thick countertop with a dramatic 19" cantilevered edge
- Seating available on three sides of the island with ample leg room
- Multiple outlets integrated in the island, making it an ideal workspace or home office

Homes 900 SF and under:

- Integrated 24" Miele convection oven and 4-burner gas cooktop
- Integrated 24" Incassa hood fan
- Integrated 24" Miele dishwasher
- Integrated 24" Miele refrigerator with bottom mount freezer

Homes over 900 SF:

- Integrated 30" Miele convection oven and 5-burner gas cooktop
- Integrated 30" Incassa hood fan
- Integrated 24" Miele dishwasher
- Integrated 30" Miele refrigerator with bottom mount freezer

MODERN BATHROOMS

Tower 5's elegant bathrooms offer the highest level of pampering and relaxation in addition to superior functionality and storage.

- Fully tiled porcelain bathrooms
- Sleek Kohler faucet and TOTO undermount vanity sink
- Engineered smooth stone countertop
- Dual flush TOTO toilets
- Floating European vanity with integrated lighting and soft-close hardware
- Double vanity in ensuite*
- Extended vanity mirror with spacious medicine cabinet storage
- Kohler shower fixtures with rain shower head and hand-held shower wand
- Linear shower drains
- Luxurious soaker tub with inclined backrest for a spa-like feel
- Pre-wired power source for easy bidet installation in main bathroom or ensuite
- Nuheat in-floor heating in main bathroom or ensuite

*UNIVERSAL DESIGN FOR SUITES

- Clear circulation space in the suite entry, one bedroom and bathroom
- Dual-height peepholes on entry door
- Easy-to-reach electrical outlets and switches throughout the home
- Bathroom reinforcement to allow for fitting of grab rail installation within the adaptable bathroom
- Lowered sill threshold for easy balcony and terrace access

EXTENSIVE LIFESTYLE AMENITIES

Residents will enjoy 18,000 SF of world-class indoor, outdoor and guest amenities to extend your living space and enhance your daily life.

- Secure, private underground parking, equipped with power, for easy installation of level 2 charging stations
- A dedicated pet wash and a dog run
- Designated room and delivery system for easy parcel retrieval
- A 2,130 SF state-of-the-art fitness facility with commercial-grade equipment, indoor/outdoor fitness areas and a studio space with wall-to-wall mirrors for yoga, stretch and dance
- A designated family space featuring a parents' area, indoor/outdoor children's play areas and craft tables
- Remote work and study spaces including a meeting lounge complete with AV requirements, 2 private study pods, co-working lounge and an open study area
- An open lounge, private dining room and bar for socializing and entertaining
- Two fully furnished, bookable guest suites for visiting family and friends
- Bike maintenance room and convenient car wash stations
- Extensive outdoor amenities including a BBQ and outdoor dining terrace, gardening area, firepit and outdoor social areas

TOTAL PEACE OF MIND

Every detail has been considered to bring ease and personal security to your everyday life.

- A full-time concierge to receive deliveries and make your life effortless
- Fob-controlled lobby, parkade and floor entry access for added security
- All homes are backed by the National Home Warranty for 2-5-10 year coverage
- On-site Customer Care team to handle homeowner requests and warranty items
- The SHAPE homeowner app keeps you connected to home, services and community