

THE  
—  
**KEARY**  
—  
BREWERY DISTRICT



It's like this  
neighbourhood  
was made for you

# S1W



Where home means  
convenience and  
comfort in a dynamic,  
connected community

A classic  
landmark in a  
historic community

S1W





Modern West Coast design meets bold and streamlined architecture that creates a shining new addition to the New Westminster skyline and a vibrant presence in the Sapperton community.



8:00 am







# Have mornings your way

A fresh start to your day is easy with everything close by. Greet the morning with a workout in the fully equipped, light-filled gym just an elevator ride away, or savour a leisurely latte or breakfast just across the street.

S1W



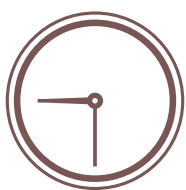
It's all  
already  
here

9:30 am

S1W







Home is where everyday living is easy.  
Be part of a completed new community  
with shops, services and transit all at  
your front door.



Convenient  
connections  
around every  
corner



# Walk, bike or ride

Welcome to a walkable community where access to daily conveniences meet picturesque riverside paths. A bike lane just outside your front door gives you access to a variety of paths to explore or simply get you where you need to go. Heading a little further? Major bus routes and the SkyTrain are steps away.

S1W

11:00 am





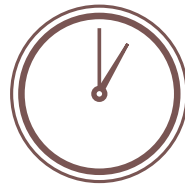
Smart design  
meets modern,  
effortless living



1:00 pm



S1W



## The lunch thing

Grab lunch at a neighbourhood spot – or better yet, linger at home where finishings are fresh, contemporary and comfortable with West Coast textures. Designed for your every day, efficient living space and integrated appliances make your place a great lunch spot any day of the week.

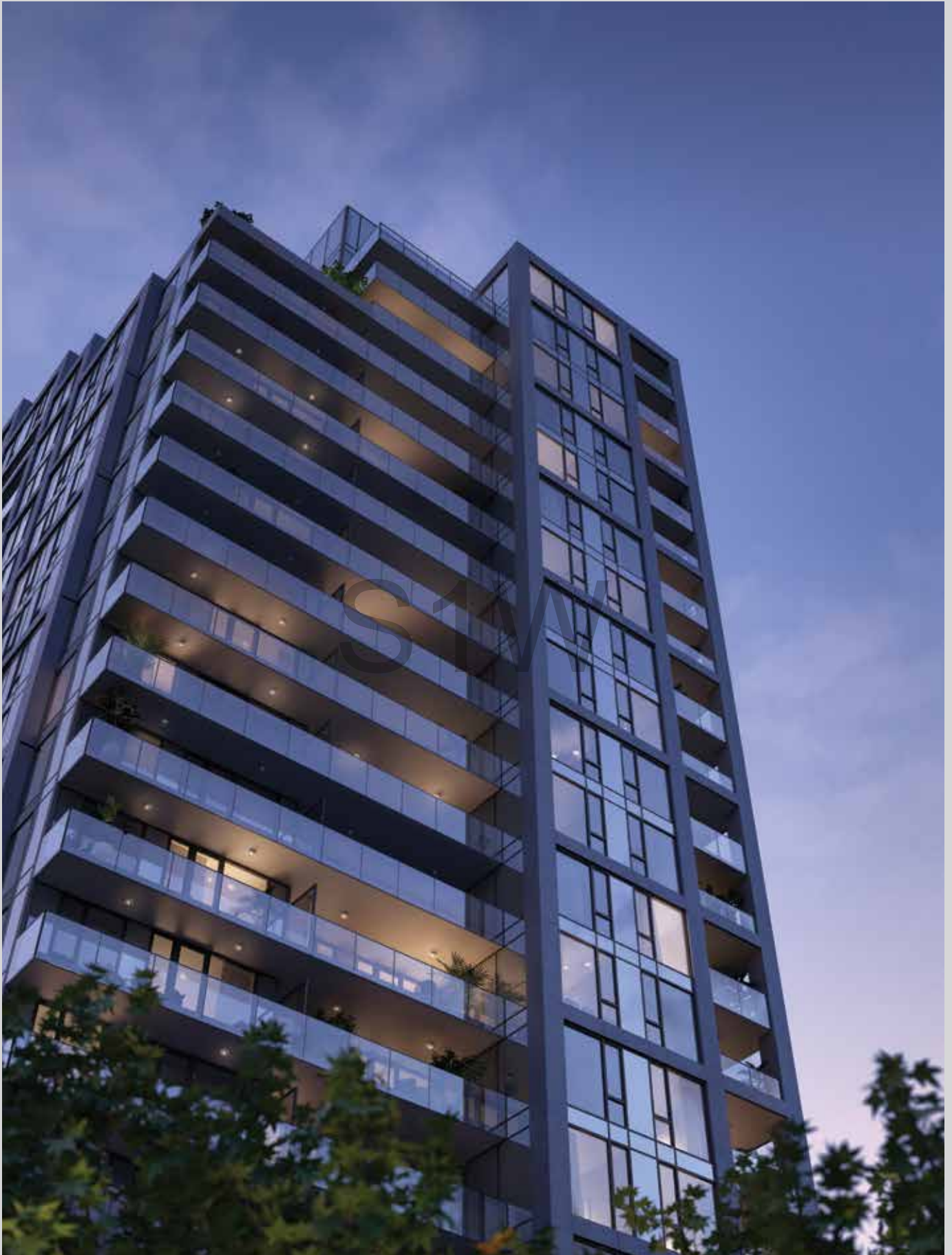


Ease into the  
light-filled  
comfort of home











The Keary marks the final phase of Wesgroup's vision for a vibrant master-planned community. Residential living in Brewery District comes complete with the quintessential neighbourhood for work, leisure, transit, full amenities and health care.

# Complete and completed



# S1W



## THE SAPPERTON

Effortless living can be found in the Sapperton's 15-storey selection of 1, 2 & 3 bedroom homes, 2-storey penthouses and townhomes; Wesgroup's first residential tower in Brewery District.



## THE COLUMBIA

Elevated style and spectacular views of the Fraser River inspired The Columbia, a collection of 1, 2 & 3 bedroom homes completed in 2020.



## THE WESTMINSTER

Efficient design and spacious plans, plus water and mountain views, distinguish the Westminster's 1, 2 & 3 bedroom pet-friendly rental homes.



**VANCOUVER**

25 Min Drive via Hwy 1

**YVR**

30 Min Drive

**HUME PARK**

5 Min Drive

**BRAID  
SKYTRAIN STATION**

20 Min Walk

SHOPS, SERVICES AND TRANSIT - WITHIN 1 KM

**SAPPERTON PARK**

5 Min Walk

SHERBROOKE STREET

THE  
**KEARY**

BREWERY DISTRICT

**BREWERY  
DISTRICT**

**SHOPS, DINING,  
SERVICES**

An Elevator Ride

KEARY STREET

SIMPSON STREET

ALBERTA STREET

**SAPPERTON  
SKYTRAIN STATION**

250 Metres Walk

NELSON'S COURT

NELSON'S CRESCENT

BRUNETTE AVENUE

BRUNETTE RIVER

CUMBERLAND STREET

**DOWNTOWN VANCOUVER**

30 Min Transit

HIGHWAY 1  
5 Min Drive

TRANS-CANADA HWY

FRASER RIVER

# The Brewery District - all grown up

Echoes of urban pioneers and brewery masters are all part of the rich history of the Sapperton neighbourhood in New Westminster. Originally home to British Columbia's first capital city, the Brewery District has made its final transformation from a historic site to the urban hub of residential living it is today.

## S1W



● **Dining** / Browns Socialhouse / Take Five Café / Freshii / Steve's Poké Bar / Subway / The Taco Factory / Bluefin Sushi / Freshslice Pizza / Sapperton District Taphouse / Thai New West / Chan's Garden / Another Beer Co. / Bruncheria Cafe ● **Retail & Shopping** / Holland Shopping Centre / Shoppers Drug Mart / Save-On-Foods / Fratelli Bakery / Sapperton Liquor Store / Cap's Bicycle Shop / Chris's Flowers / Royal Farm Market ● **Recreation & Sports** / Sapperton Park / Sapperton Water Park / Hume Park / Archery Museum / Extreme Air Park / Hume Park Spray Park / Glenbrook Ravine Park ● **Services** / Canada Post / TD Canada Trust / Scotiabank / Kids & Company Daycare / Learn n' Play Learning Centre / Murrick Insurance / Chevron / Mindful Mutts Dog Care Centre / ● **Health & Beauty** / Royal Columbian Hospital / LifeLabs / Fraser Orthopaedic Institute / Synergy Rehab / Fuscaldo Chiropractic & Total Health Centre / Indigo Health Clinic / Sandy's Esthetics and Day Spa / Newest Smile Dental / Simply Wonderful Nails / The Medicine Shoppe Pharmacy / B&J Barbershop ● **Education** / Richard McBride Elementary School / Urban Academy School / Kumon Learning Centre ● **Transportation** / Braid SkyTrain Station / Sapperton SkyTrain Station / Evo / Highway 1 / Route 109 Bus (Inbound – Lougheed Station, Outbound – New Westminster Station)

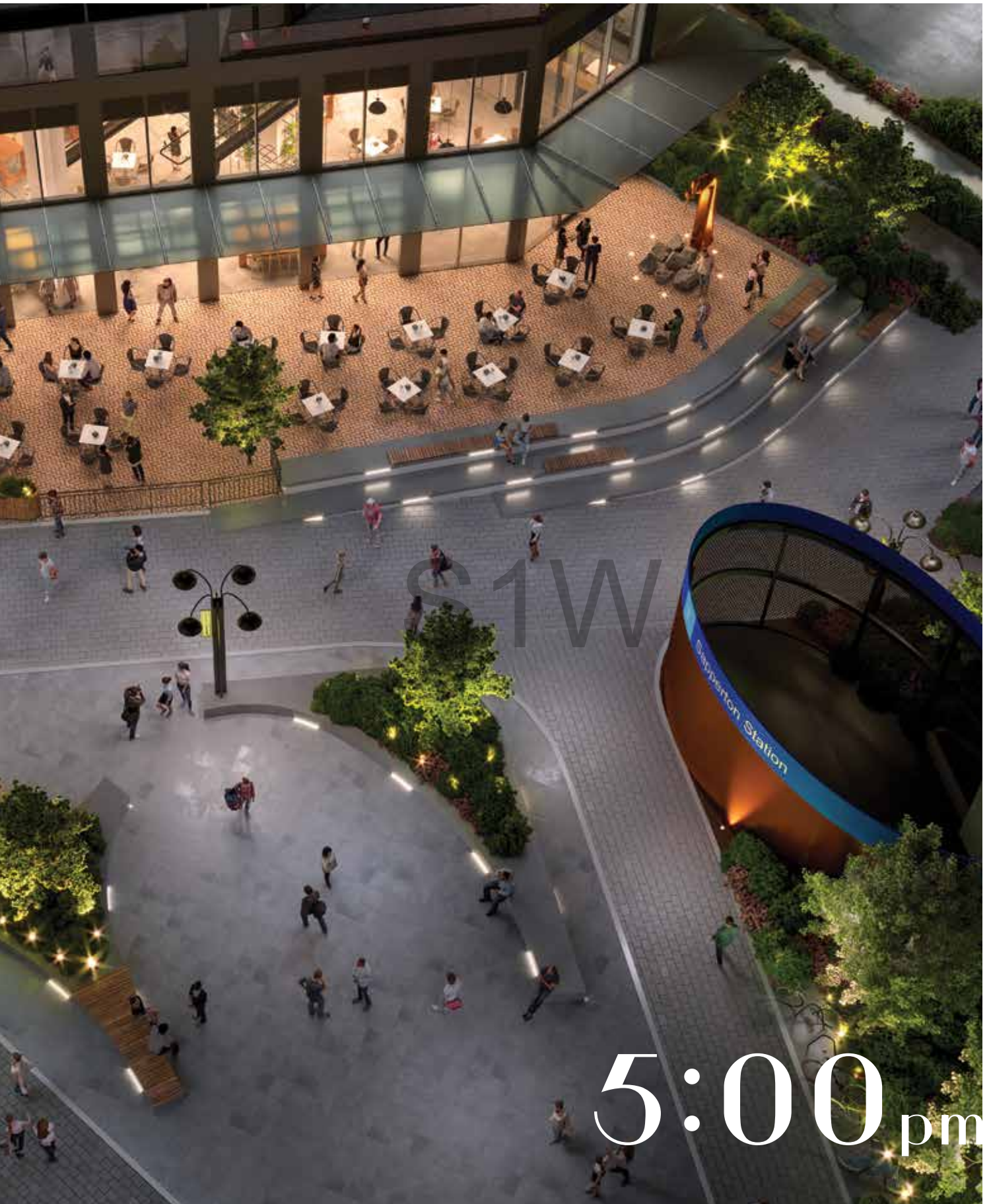


# A sense of place to gather and connect

Brewery District's newly designed, open and inviting social plaza is the perfect place to take a break or connect with friends. It's also conveniently linked with future restaurants, transit and health services.







\$1W

5:00 pm

When it's time  
to unwind

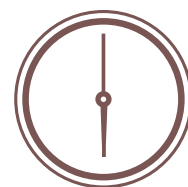






\$1W

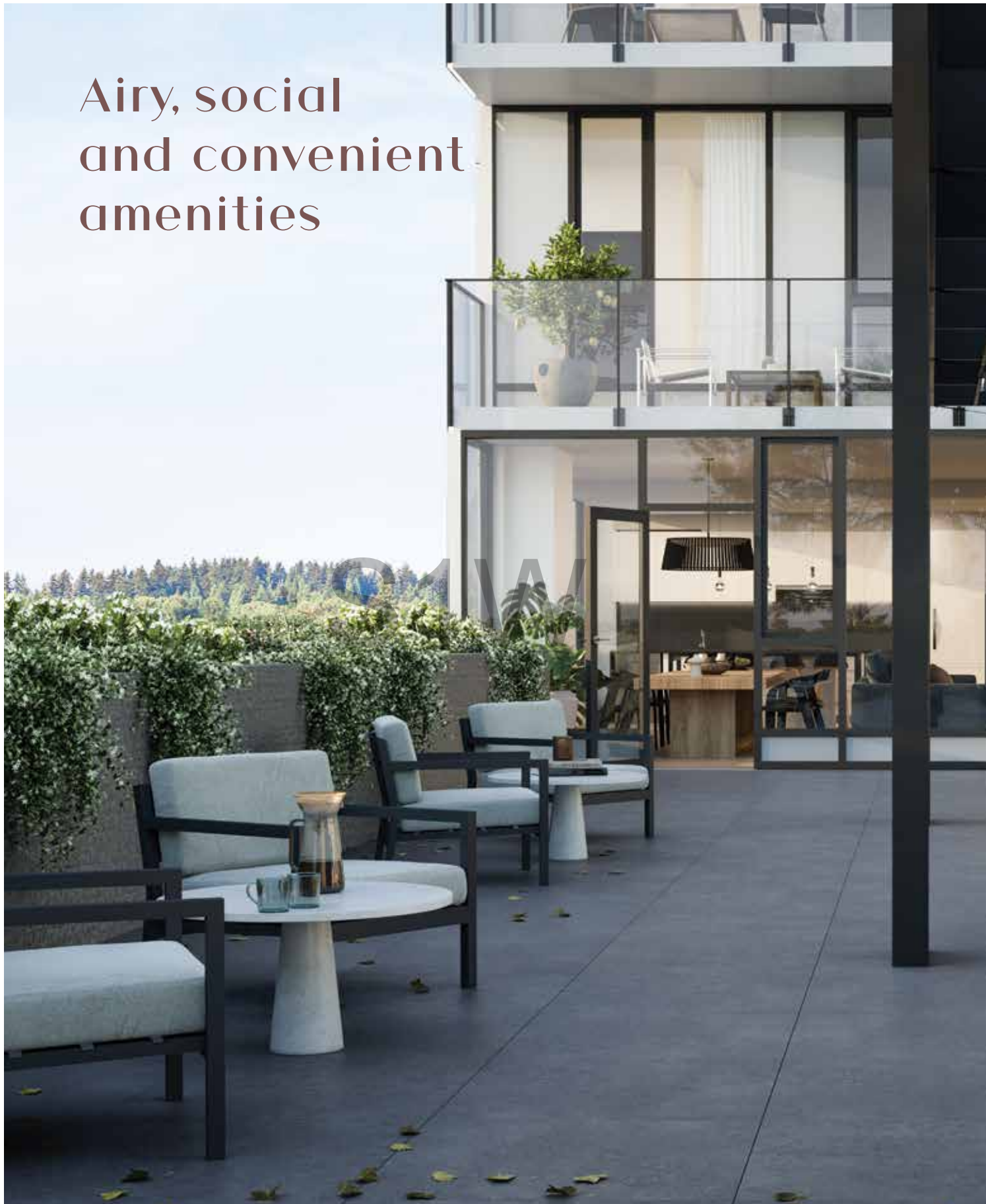
Feeling social? Lounge, celebrate or watch the game with attentively designed amenity spaces complete with a chef's kitchen and plenty of room for friends. Or, find your bliss with natural light pouring into the yoga room for a meditative break or a little downward dog.



6:00 pm



Airy, social  
and convenient  
amenities



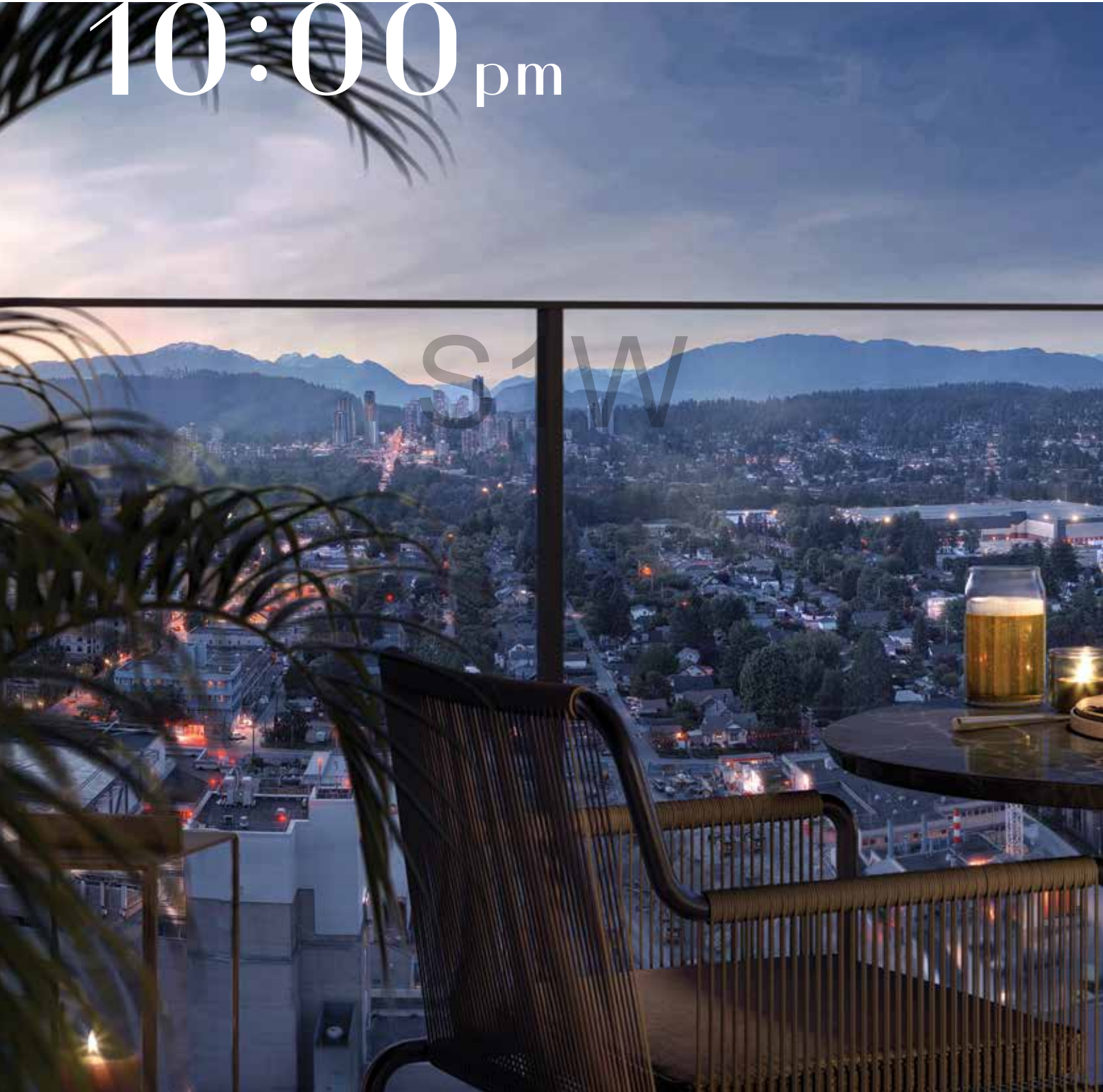




Enjoy the perfect extension of home at The Keary to host, BBQ or relax. Beyond the sparkling cityscape are expansive views of the Fraser River to the south and mountain vistas to the north.

10:00 pm

SW





Your very own  
private outdoor  
space to savour

S1W



# A nod to the past



Raise your glass to the district built on hard work and good ale. With the 1858 arrival of England's Royal Engineers (or "Sappers") to build New West's infrastructure, also came the Sapperton Brewery, eventually evolving into Lucky Lager and the Labatt Brewing Company. The Keary pays homage to Sapper James Keary and his family, who have made an enduring mark on the city for over 150 years.

## The Kearys of The Keary

One of those Sappers, Royal Engineer James Keary and his family arrived in New Westminster. A few years after the Kearys opened a hotel called The Telegraph, James died in an accident at age 45. His wife, Maria Holland Keary, took in boarders and developed rental cottages to support herself and her three children. Her son William later became

Mayor of New Westminster, Manager of the Royal Agricultural and Industrial Society, and Honourary Secretary of the General Hospital, which today we know as the Royal Columbian Hospital. Keary Street and now, The Keary, continue to honour the family name.





# Building communities, connecting people



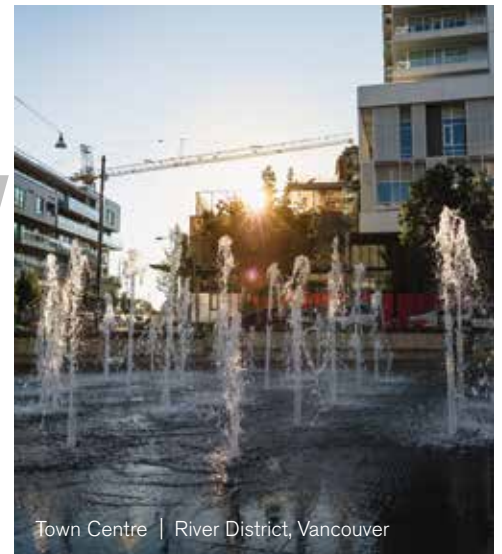
River District, Vancouver

125 years ago, the Brewery District of New Westminster was built on the spirit of its people, innovation and a vision for a new tomorrow. Today, Wesgroup honours this spirit by developing a legacy that will stand the test of time. With a nod to the past and sights set on the future, Wesgroup

draws from its rich history as a family business with over 50 years' experience in community building and forward-thinking design. We don't just build homes and businesses, we create communities where the heart of what we do is about connecting people and adding value to their lives.



Penthouse | Brewery District



Town Centre | River District, Vancouver



Quartet | River District, Vancouver



A Complete  
Community  
By Wesgroup

S1W



[TheKearyByWesgroup.ca](http://TheKearyByWesgroup.ca)

The developer reserves the right without notice to make modifications to floorplans, landscape design, project design, materials, and specifications to maintain the high standard of the development. Renderings are an artist's interpretation only. E.&O.E.