



**AEGEAN HOMES**



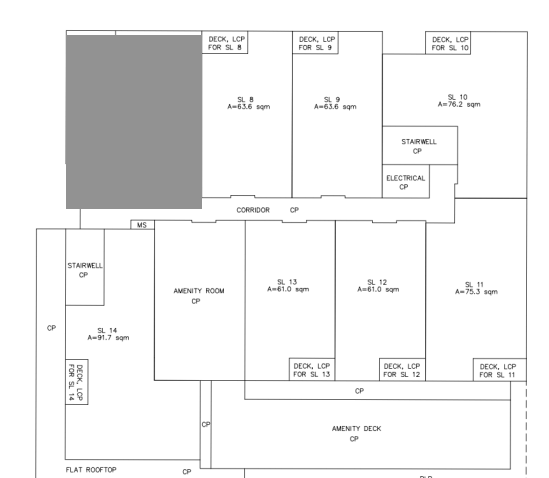
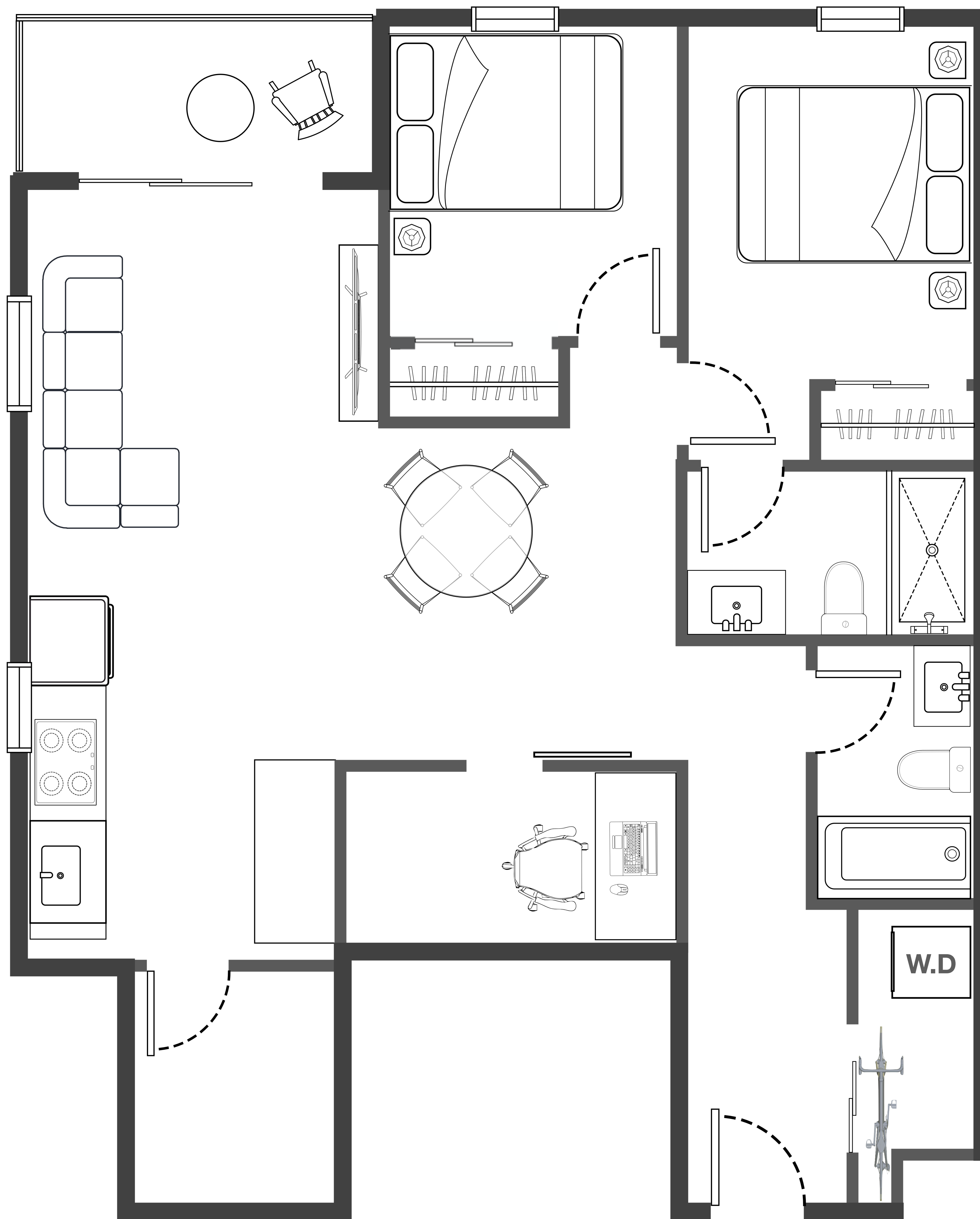


Aegean Homes

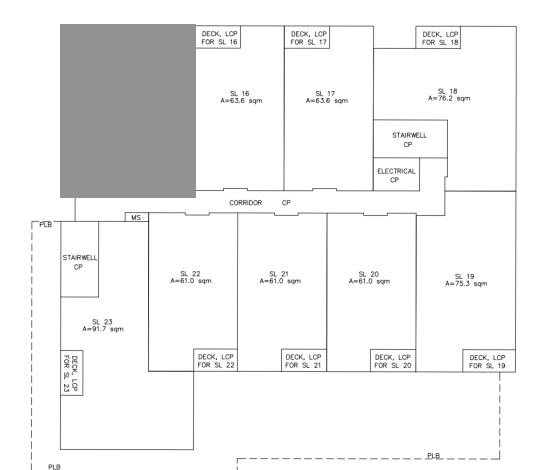
# PLAN A

**2 Bedrooms+ Den**  
**2 Bathrooms**

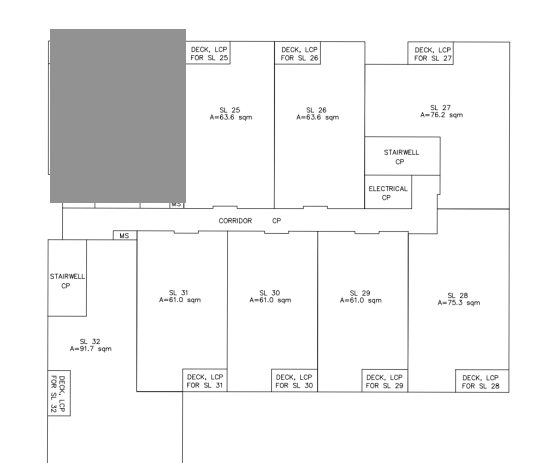
**Interior: 950 Sq.Ft.**  
**Exterior: 50 Sq.Ft.**  
**Total: 1,000 Sq.Ft.**



**Level 3**



**Level 4**



**Level 5**



\*In our continuing effort to improve and maintain the high standard of the Aegean Homes, the developer reserves the right to modify or change plans, specifications, features and prices without notice. E. & O.E.

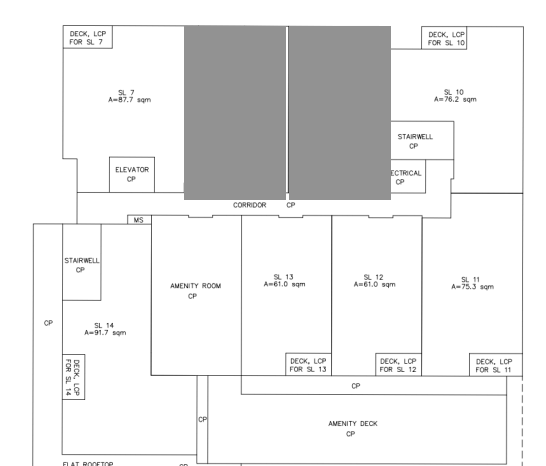
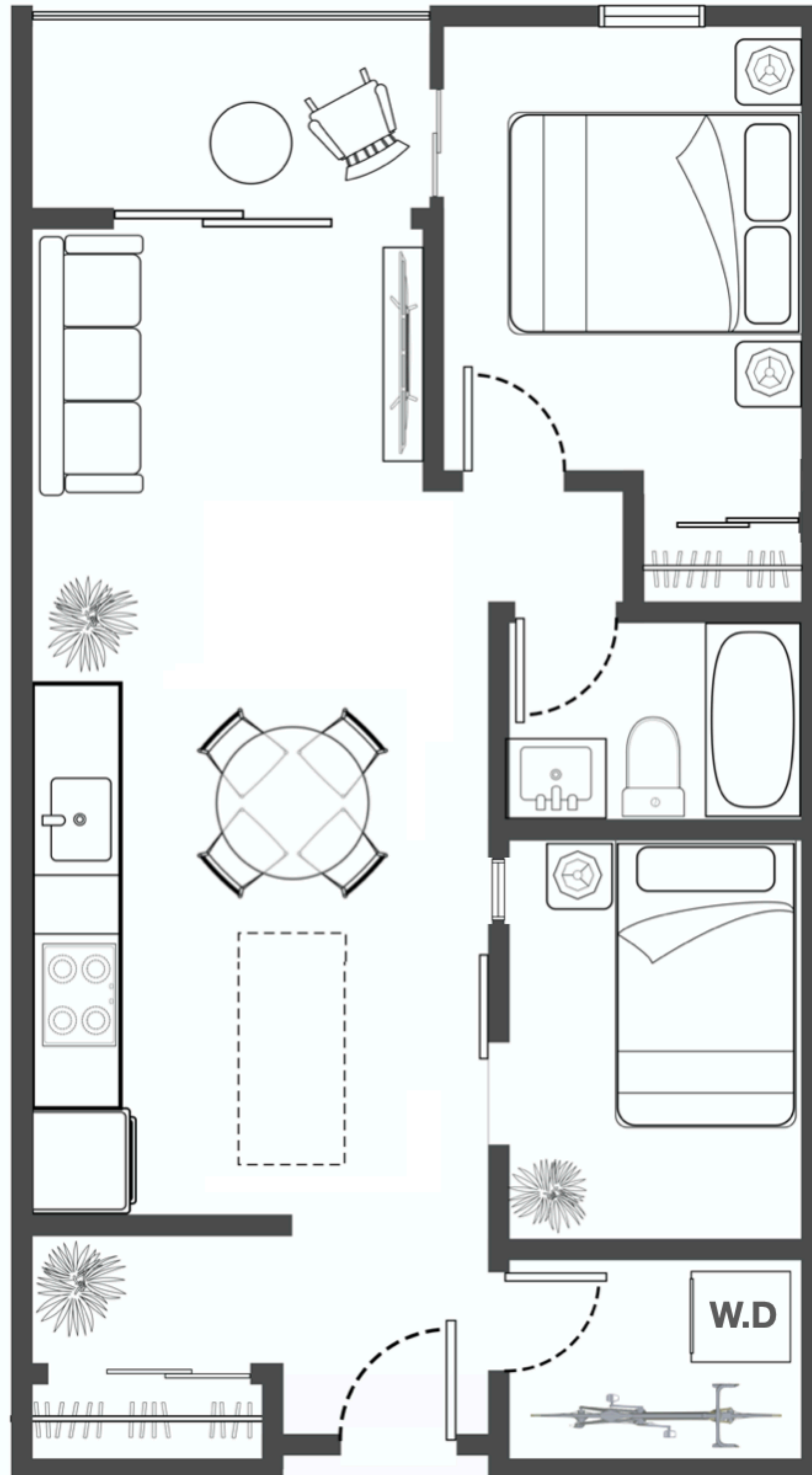


Aegean Homes

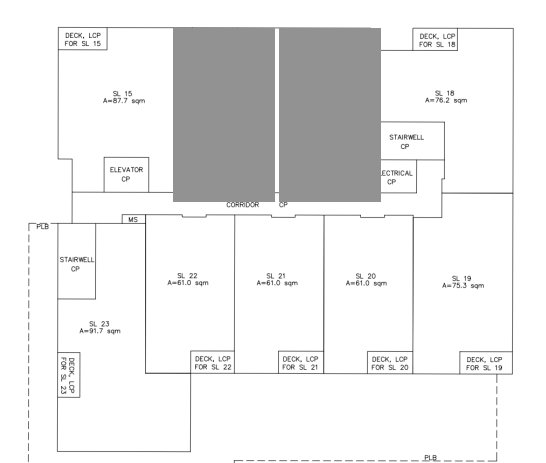
# PLAN B1

**2 Bedrooms**  
**1 Bathroom**

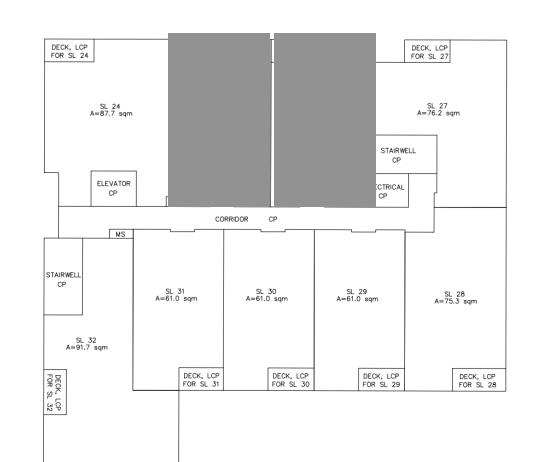
**Interior: 689 Sq.Ft.**  
**Exterior: 48 Sq.Ft.**  
**Total: 737 Sq.Ft.**



**Level 3**



**Level 4**



**Level 5**



\*In our continuing effort to improve and maintain the high standard of the Aegean Homes, the developer reserves the right to modify or change plans, specifications, features and prices without notice. E. & O.E.





Aegean Homes

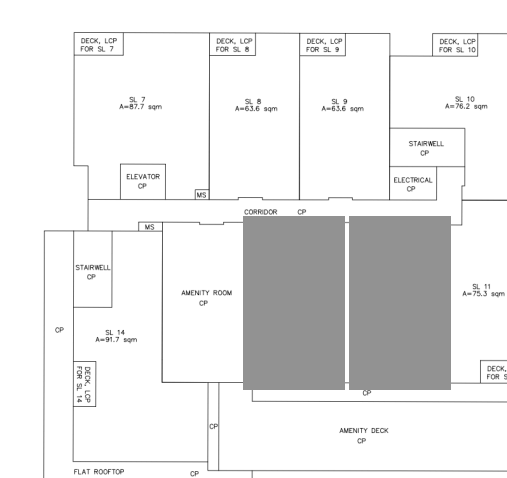
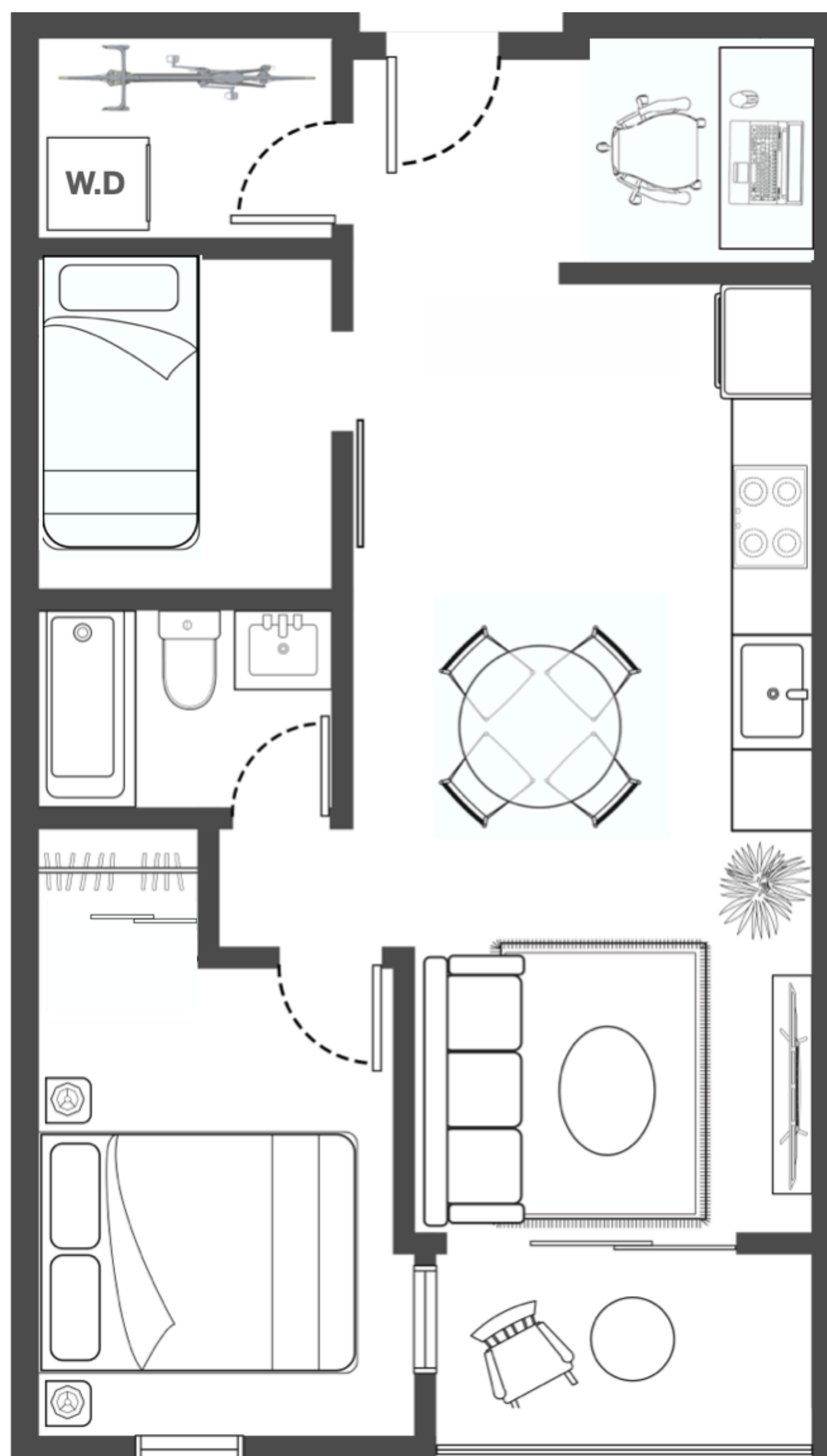
# PLAN B2

**1 Bedroom+Den**  
**1 Bathroom**

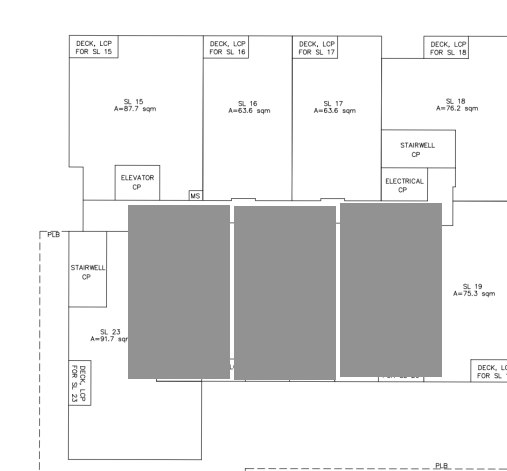
**Interior: 658 Sq.Ft.**

**Exterior: 48 Sq.Ft.**

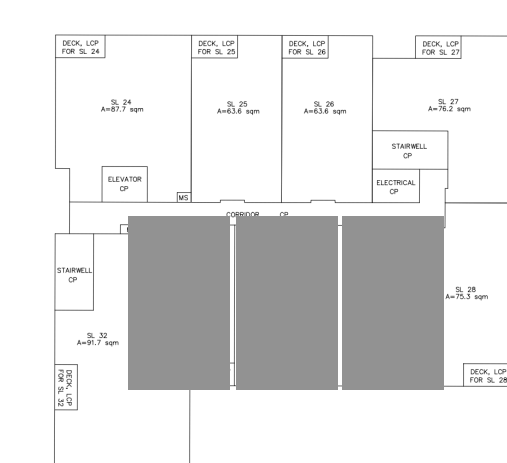
**Total: 706 Sq.Ft.**



**Level 3**



**Level 4**



**Level 5**



\*In our continuing effort to improve and maintain the high standard of the Aegean Homes, the developer reserves the right to modify or change plans, specifications, features and prices without notice. E. & O.E.

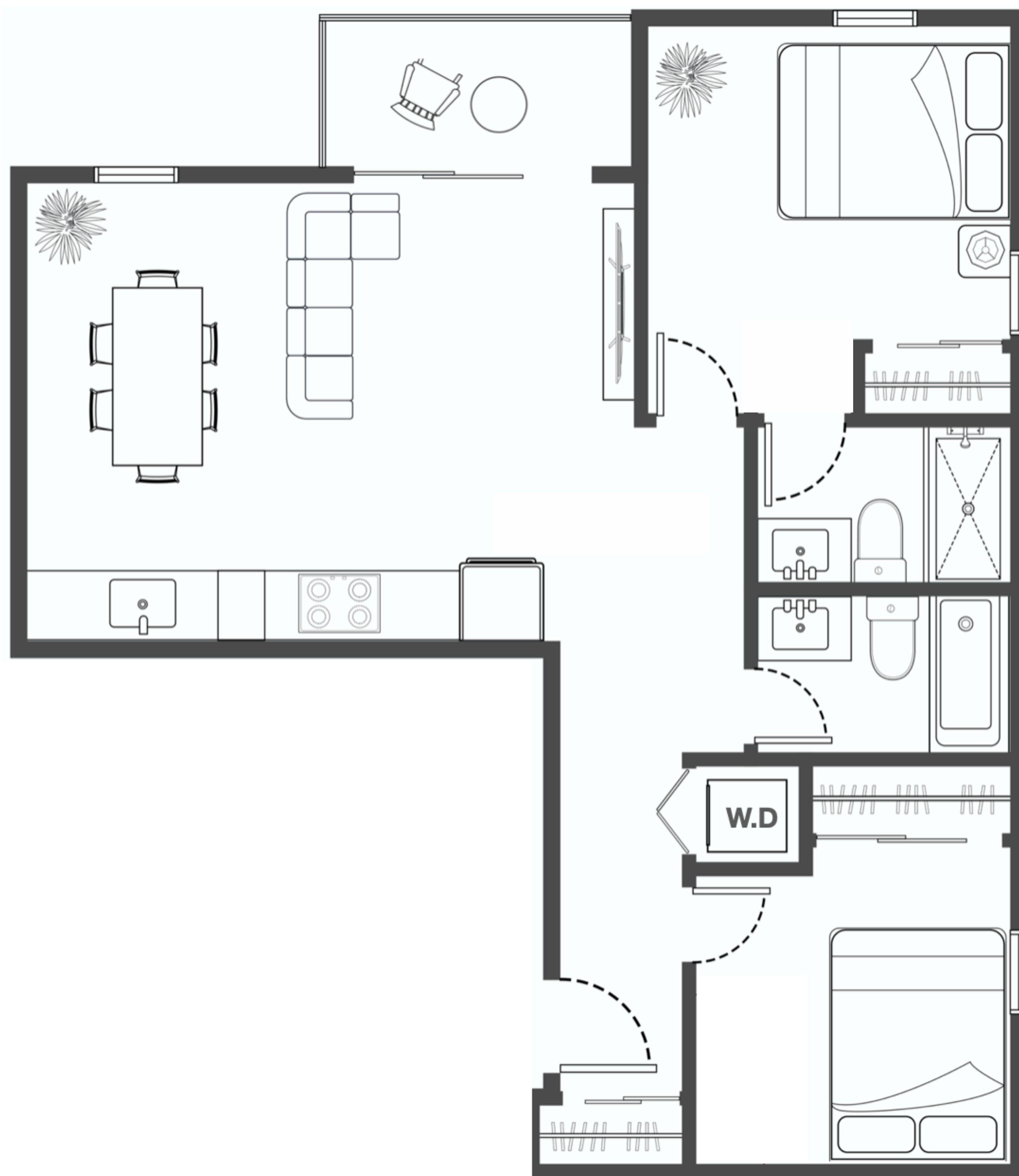


Aegean Homes

# PLAN C

**2 Bedrooms**  
**2 Bathrooms**

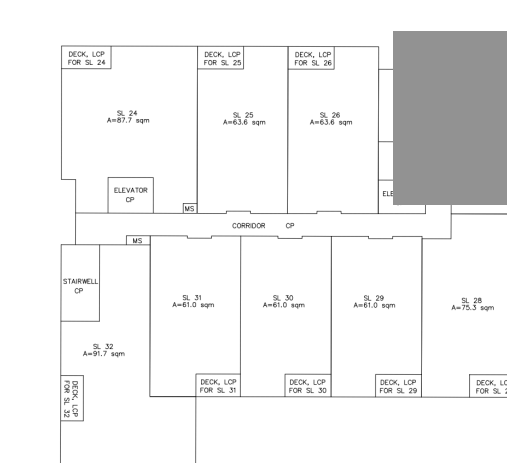
**Interior: 820 Sq.Ft.**  
**Exterior: 48 Sq.Ft.**  
**Total: 868 Sq.Ft.**



**Level 3**



**Level 4**



**Level 5**



\*In our continuing effort to improve and maintain the high standard of the Aegean Homes, the developer reserves the right to modify or change plans, specifications, features and prices without notice. E. & O.E.



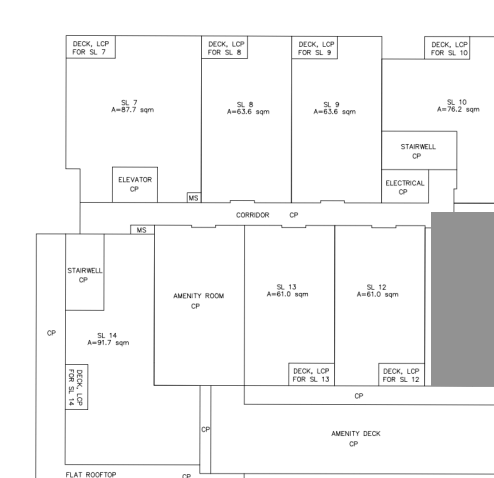
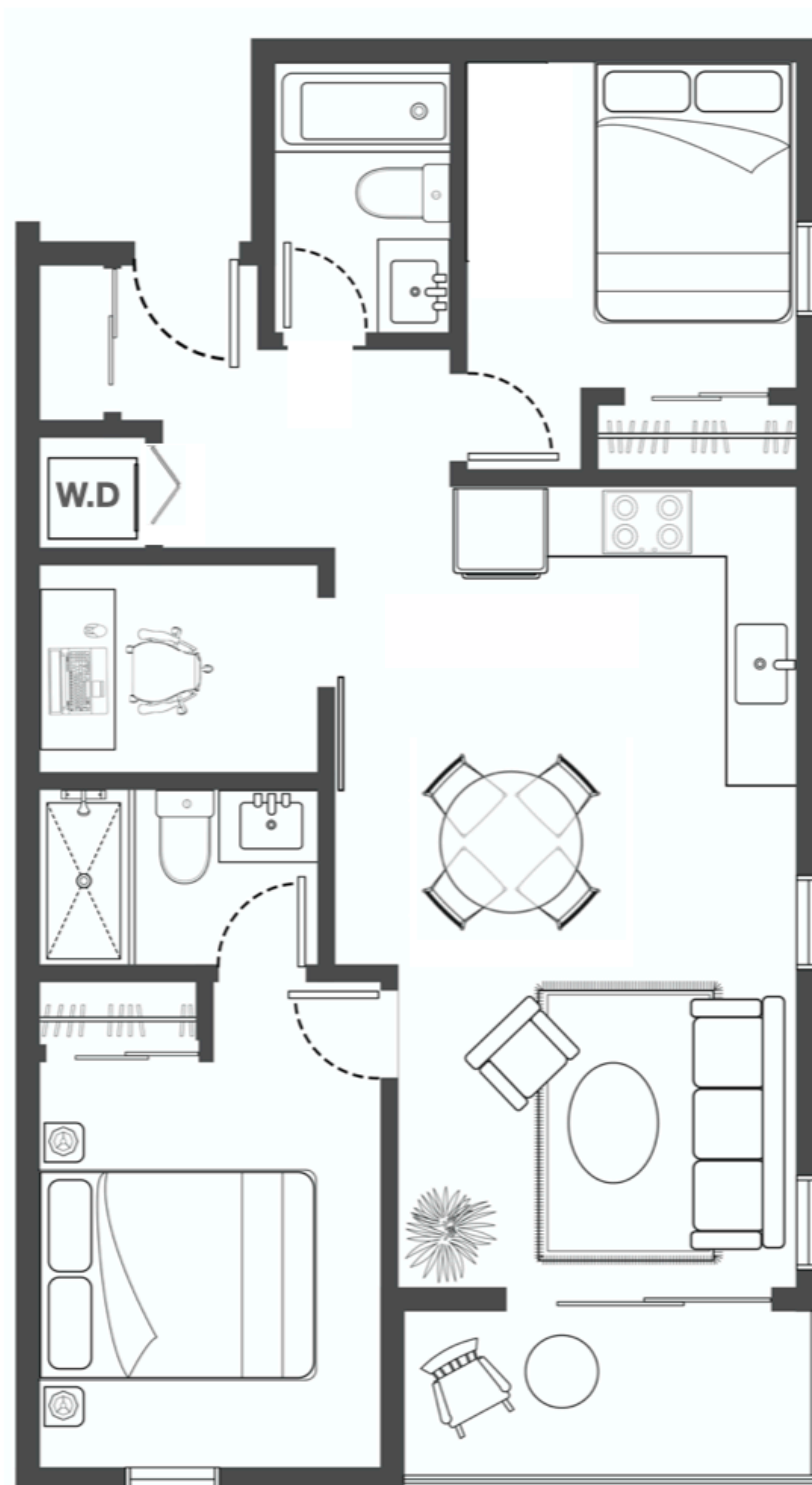


Aegean Homes

# PLAN D

**2 Bedrooms+Den**  
**2 Bathrooms**

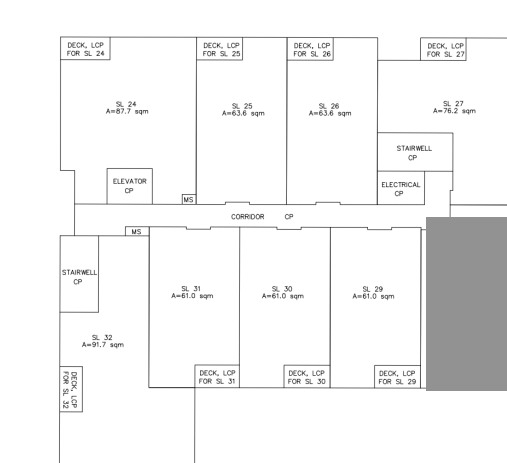
**Interior: 810 Sq.Ft.**  
**Exterior: 55 Sq.Ft.**  
**Total: 865 Sq.Ft.**



**Level 3**



**Level 4**



**Level 5**



\*In our continuing effort to improve and maintain the high standard of the Aegean Homes, the developer reserves the right to modify or change plans, specifications, features and prices without notice. E. & O.E.

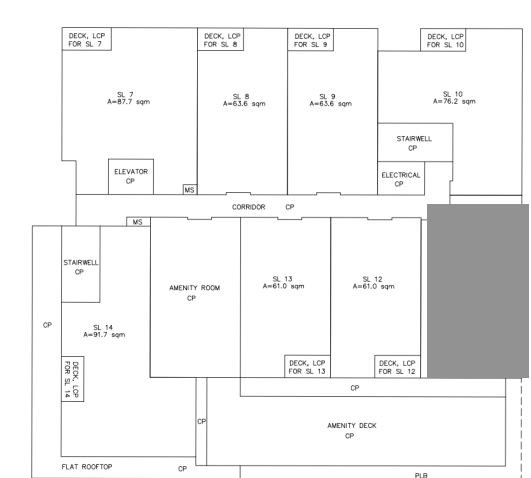
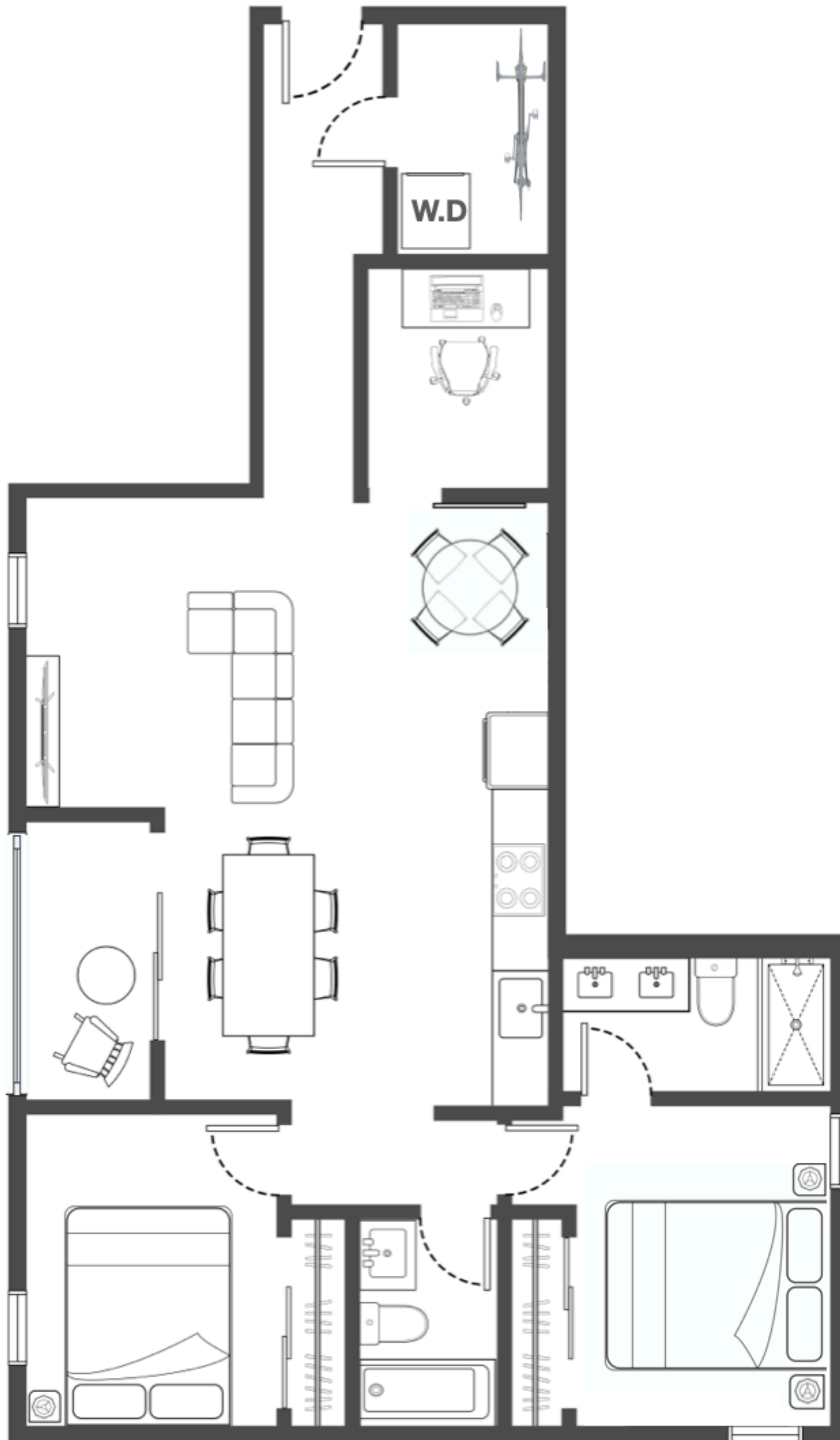


Aegean Homes

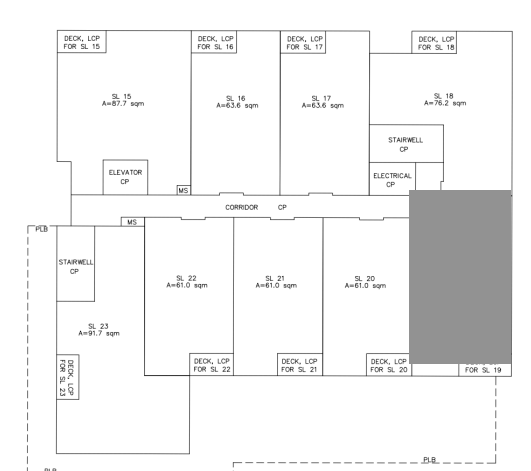
# PLAN E

**2 Bedrooms+Den**  
**2 Bathrooms**

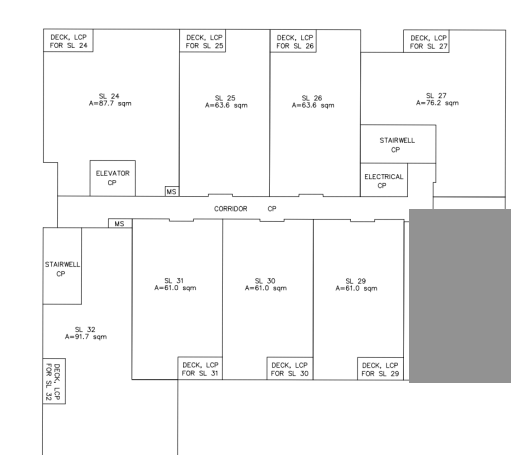
**Interior: 810 Sq.Ft.**  
**Exterior: 55 Sq.Ft.**  
**Total: 865 Sq.Ft.**



**Level 3**



**Level 4**



**Level 5**



\*In our continuing effort to improve and maintain the high standard of the Aegean Homes, the developer reserves the right to modify or change plans, specifications, features and prices without notice. E. & O.E.





Aegean Homes

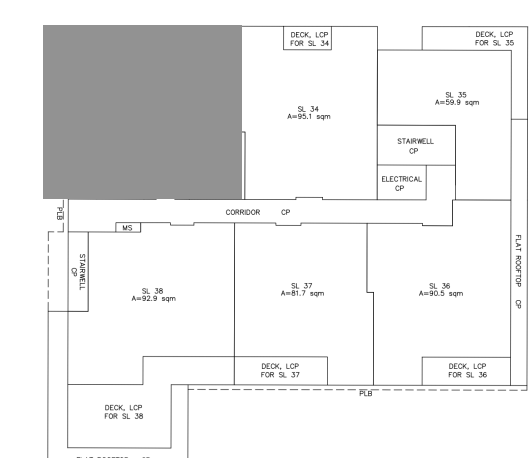
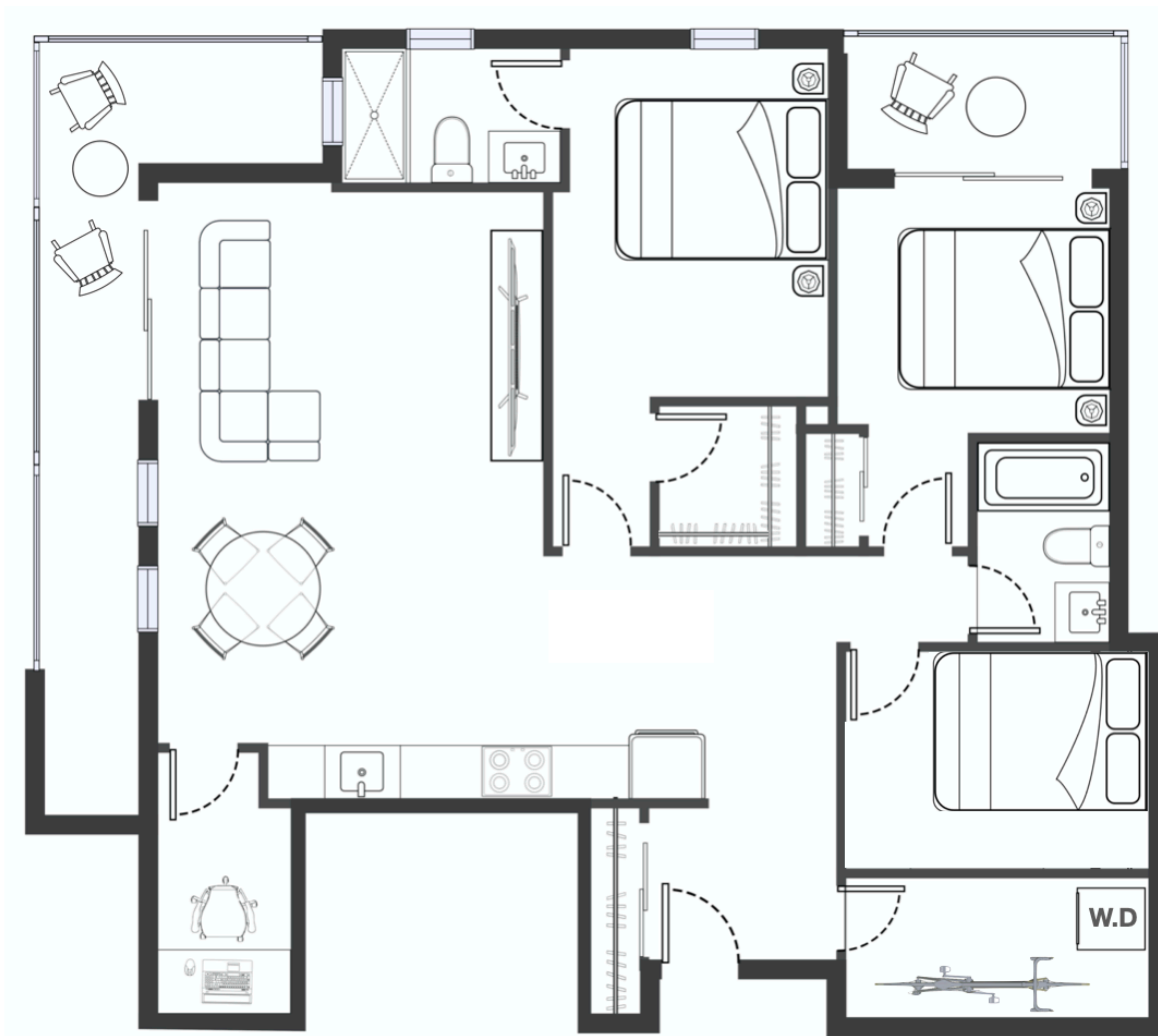
# PLAN I

**3 Bedrooms+Den**  
**2 Bathrooms**

**Interior: 1,194 Sq.Ft.**

**Exterior: 160 Sq.Ft.**

**Total: 1,354 Sq.Ft.**



**Level 6**



\*In our continuing effort to improve and maintain the high standard of the Aegean Homes, the developer reserves the right to modify or change plans, specifications, features and prices without notice. E. & O.E.





Aegean Homes

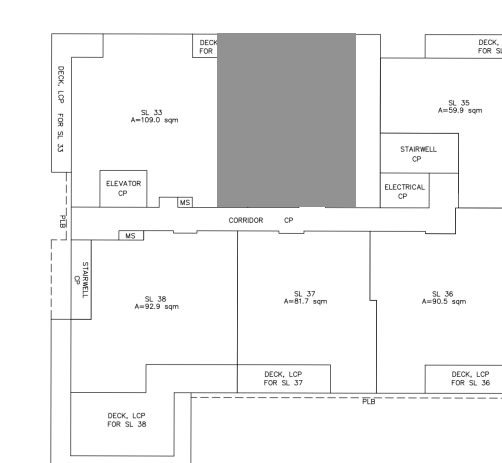
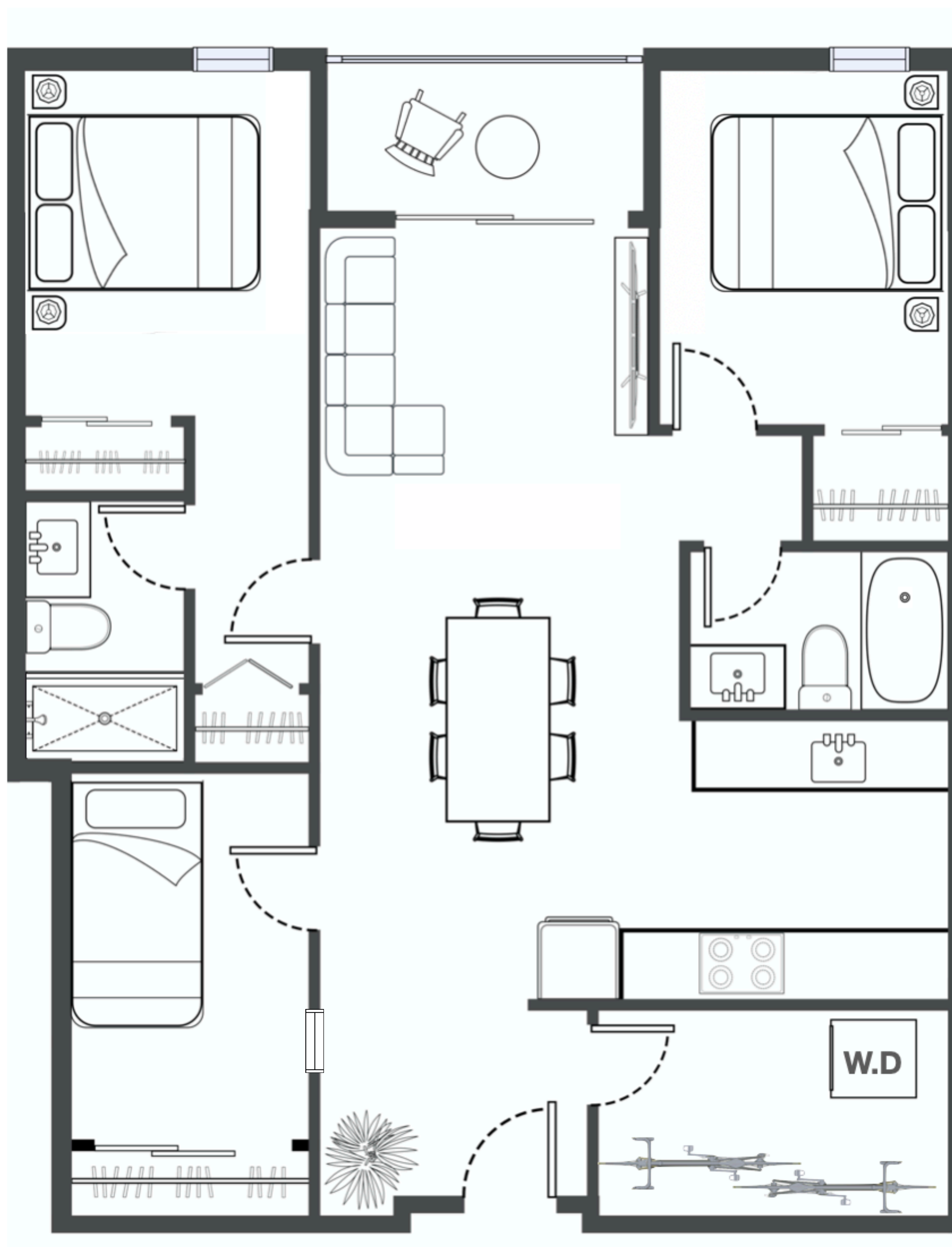
# PLAN J

**3 Bedrooms**  
**2 Bathrooms**

**Interior: 1,023 Sq.Ft.**

**Exterior: 48 Sq.Ft.**

**Total: 1,071 Sq.Ft.**



**Level 6**



\*In our continuing effort to improve and maintain the high standard of the Aegean Homes, the developer reserves the right to modify or change plans, specifications, features and prices without notice. E. & O.E.

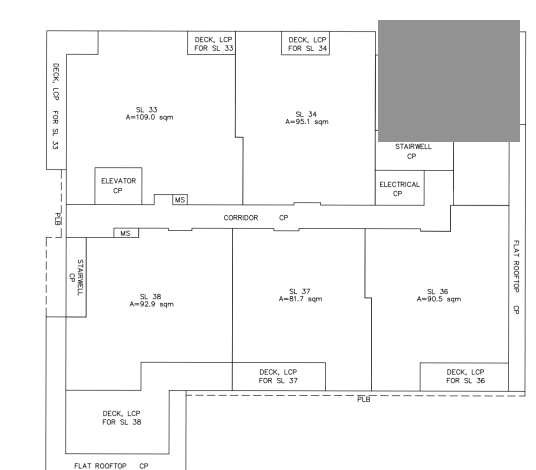
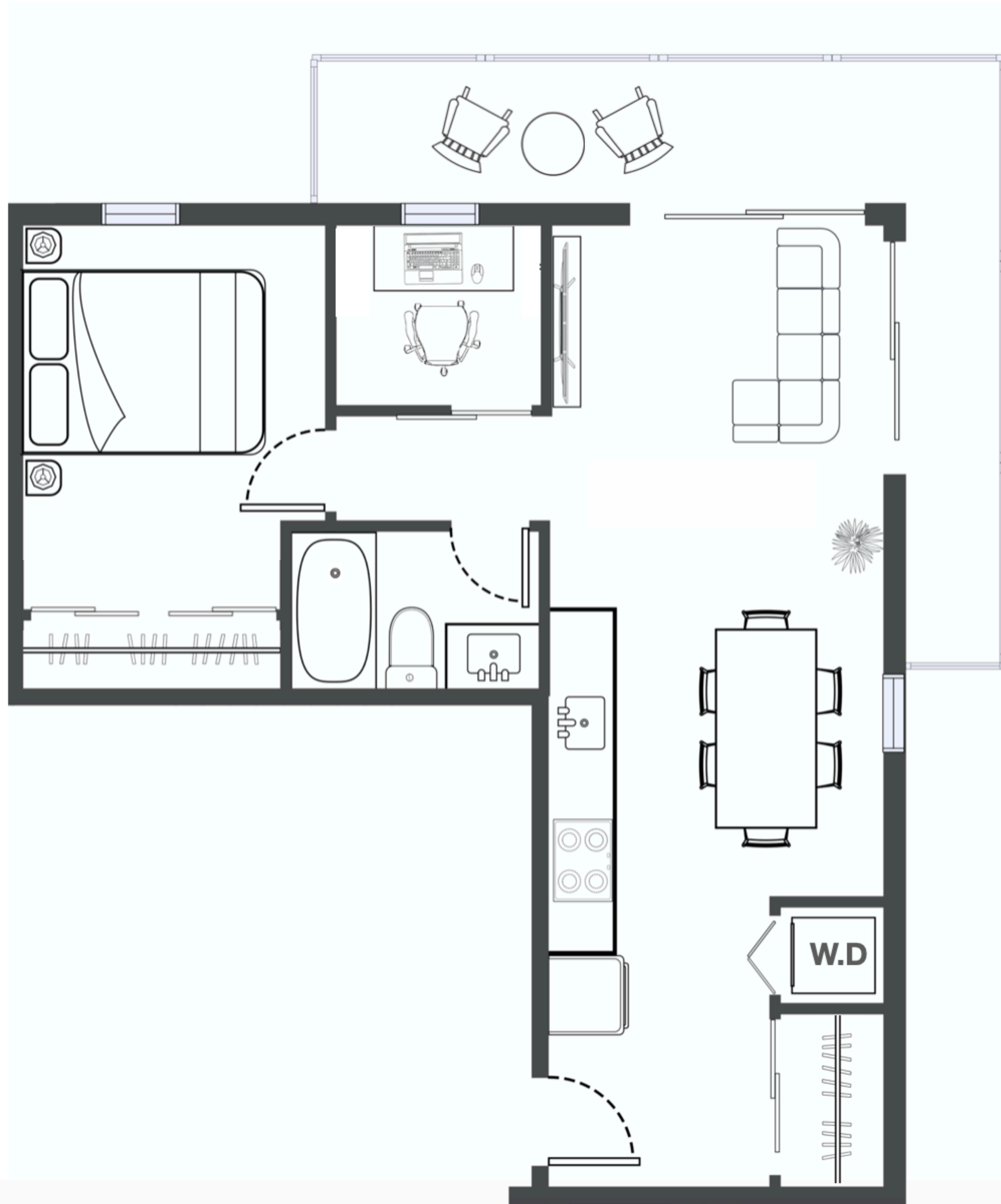


Aegean Homes

# PLAN K

**1 Bedroom+Den  
1 Bathroom**

**Interior: 646 Sq.Ft.  
Exterior: 154 Sq.Ft.  
Total: 800 Sq.Ft.**



**Level 6**



\*In our continuing effort to improve and maintain the high standard of the Aegean Homes, the developer reserves the right to modify or change plans, specifications, features and prices without notice. E. & O.E.



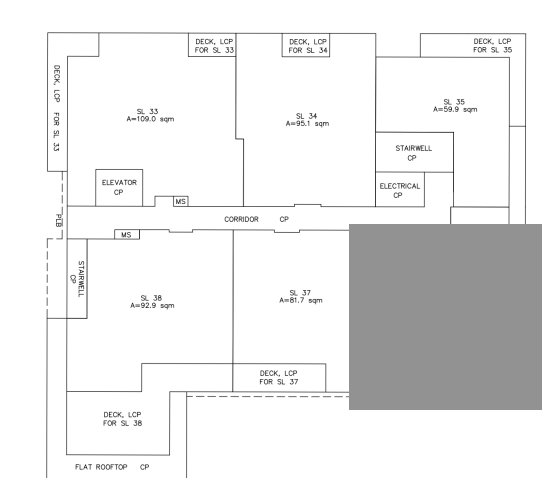
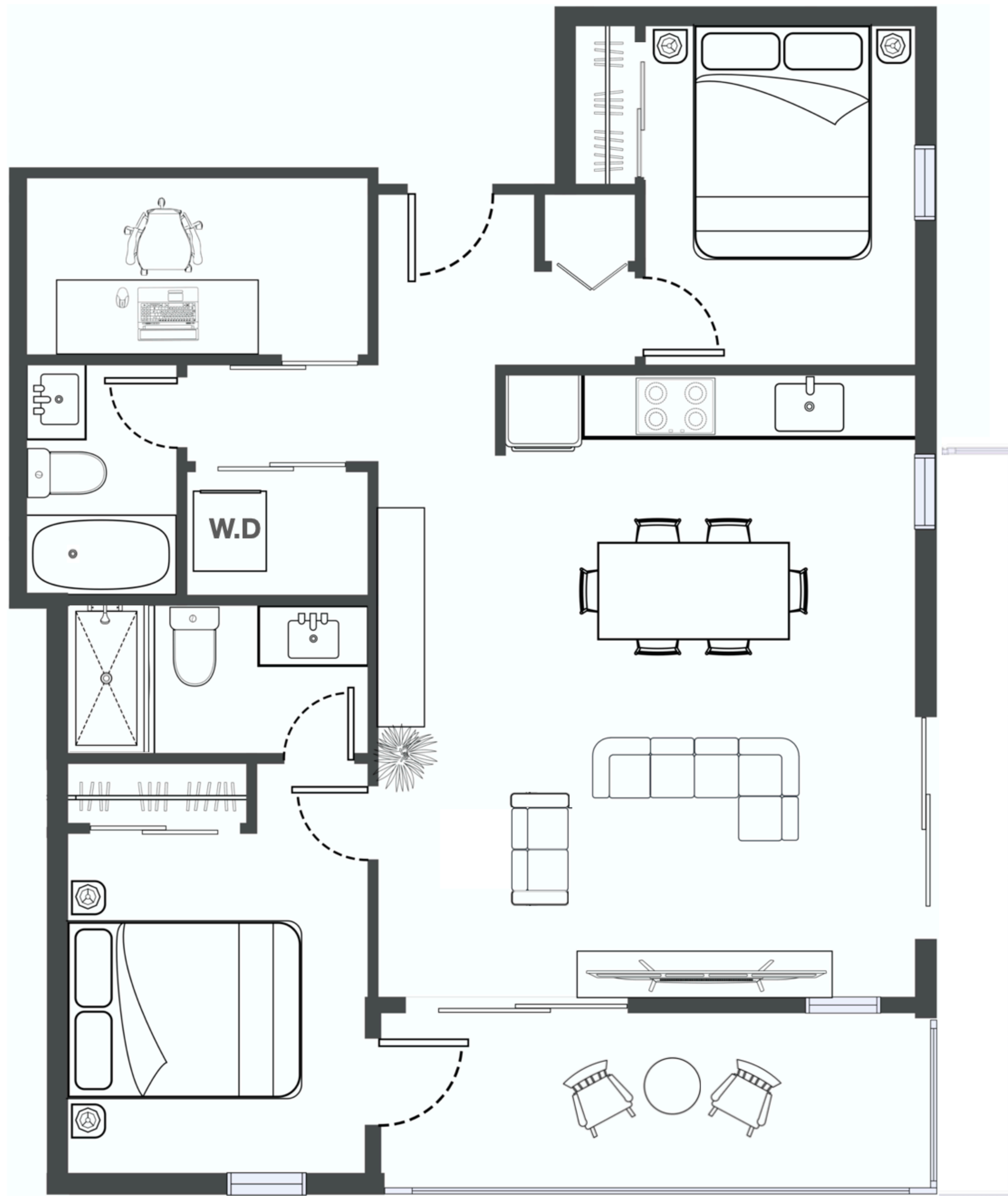


Aegean Homes

# PLAN L

**2 Bedrooms+Den  
2 Bathroom**

**Interior: 980 Sq.Ft.  
Exterior: 212 Sq.Ft.  
Total: 1,193 Sq.Ft.**



**Level 6**



\*In our continuing effort to improve and maintain the high standard of the Aegean Homes, the developer reserves the right to modify or change plans, specifications, features and prices without notice. E. & O.E.

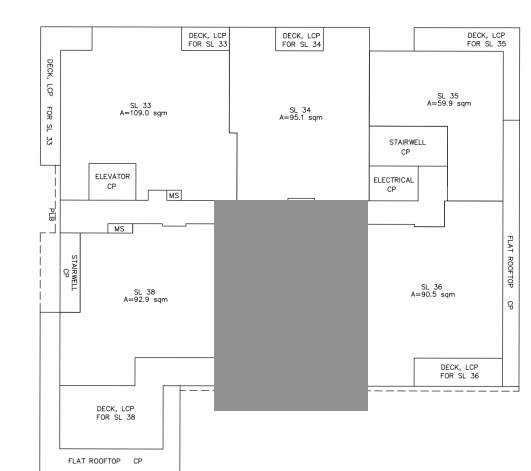
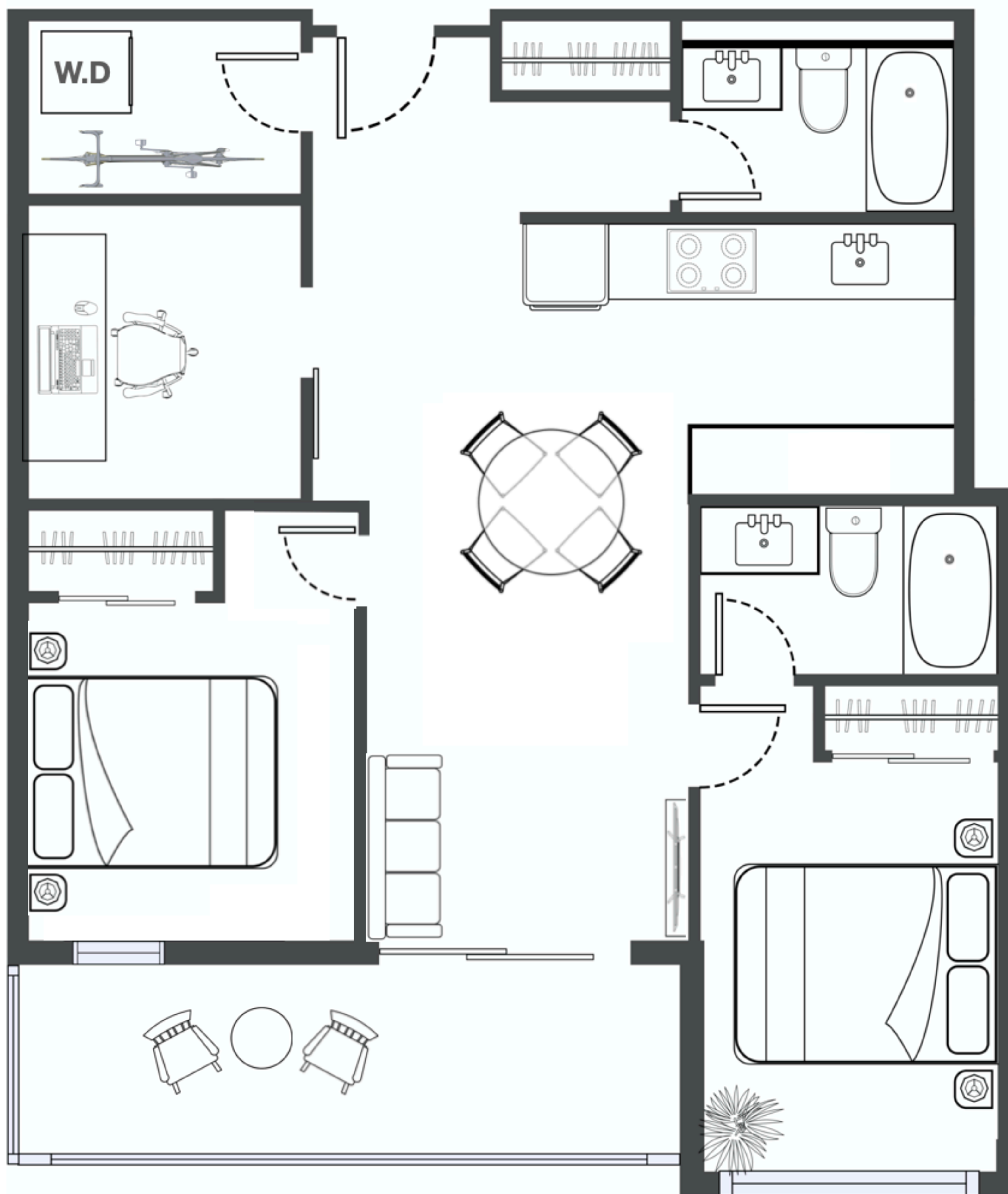


Aegean Homes

# PLAN M

**2 Bedrooms+Den  
2 Bathroom**

**Interior: 883 Sq.Ft.  
Exterior: 118 Sq.Ft.  
Total: 1,001 Sq.Ft.**



**Level 6**



\*In our continuing effort to improve and maintain the high standard of the Aegean Homes, the developer reserves the right to modify or change plans, specifications, features and prices without notice. E. & O.E.



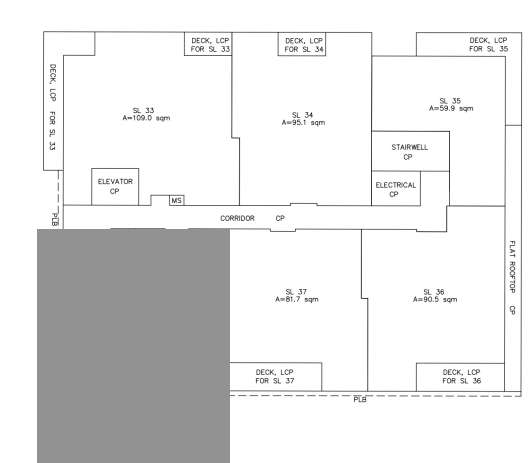
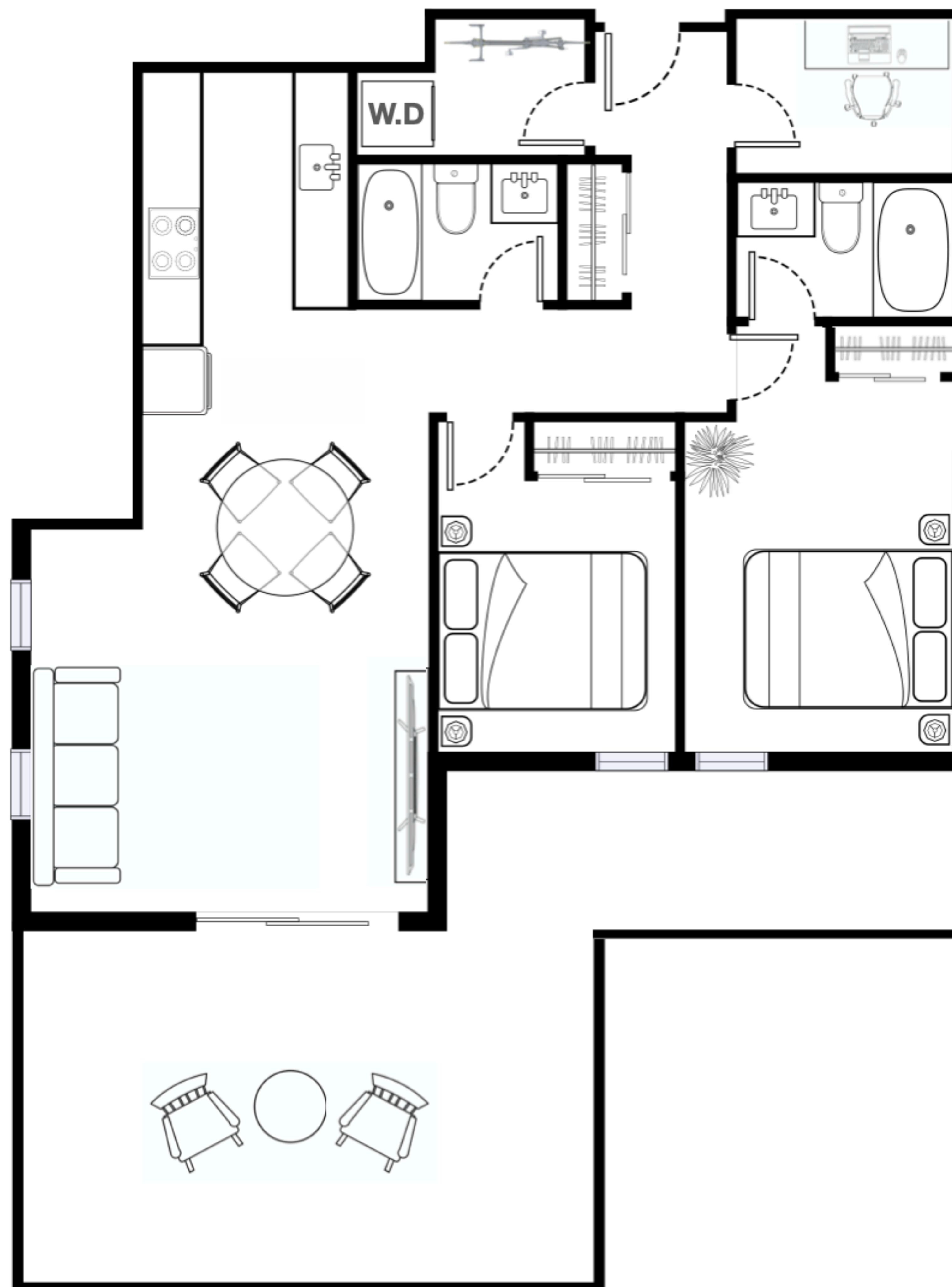


Aegean Homes

# PLAN H

**2 Bedrooms+Den**  
**2 Bathroom**

**Interior: 1,001 Sq.Ft.**  
**Exterior: 411 Sq.Ft.**  
**Total: 1,412 Sq.Ft.**



**Level 6**



\*In our continuing effort to improve and maintain the high standard of the Aegean Homes, the developer reserves the right to modify or change plans, specifications, features and prices without notice. E. & O.E.



Aegean Homes

# PRICE RANGE

## Residencial

Plan Code	Unit Type	Bath No.	Interior Area	Exterior Area	Total Area	Starting Price
A	2Bed+Den	2	950	50	1000	CA\$589,500
B1	2Bed	1	689	48	737	CA\$447,850
C	2Bed	2	820	48	868	CA\$537,100
D	2Bed+Den	2	810	55	865	CA\$534,600
B2	1Bed+Den	1	658	48	706	CA\$399,998
E	2Bed+Den	2	990	50	1040	CA\$633,600
I	3Beds+Den	2	1194	160	1354	CA\$752,220
J	3Beds	2	1023	48	1071	CA\$675,180
K	1Bed+Den	1	646	154	800	CA\$457,368
L	2Bed+Den	2	980	213	1193	CA\$646,800
M	2Bed+Den	2	883	118	1001	CA\$613,685
H	2Bed+Den	2	1001	411	1412	CA\$699,699

\*In our continuing effort to improve and maintain the high standard of the Aegean Homes, the developer reserves the right to modify or change plans, specifications, features and prices without notice. E. & O.E.





**Aegean Homes**

## **Buyer's Package**

<b>ADDRESS</b>	1360 Victoria Street, Squamish, B.C., Total Units: Residential 32 + Commercial 6
<b>Amenities</b>	Outdoor lavish green terraces Indoor/outdoor yoga and stretching zones
<b>Assignment Fee</b>	1% of the Assignment Price plus GST
<b>Ceiling Height</b>	12' ceilings on the main level, 9 ' high ceiling on upper levels
<b>Color Schemes</b>	Light or Dark
<b>Estimated Completion</b>	JUNE 2022
<b>Warranty</b>	2-5-10 Home Warranty
<b>Deposit Structure</b>	10% of the Purchase Price as follows, payable to "PLLR Lawyers In Trust" : \$10,000 personal cheque or bank draft at offer; increase to 10% total deposit in 7 days after the acceptance of the offer by the Vendor.
<b>Parking</b>	1 parking stall for each residential units.
<b>Strata Fees</b>	\$0.29/SQ.FT.
<b>Pets</b>	2 dogs or 2 cats or 1 of each
<b>Rentals</b>	Allowed
<b>Monthly&amp;Daily Rents</b>	Approx. \$2,300-2,500/Month = \$27,600/Year 5% Return Rate Approx. \$230-260/Day = \$91,250/Year 10-17% Return Rate
<b>Upgrades</b>	Full-size front-loading Whirlpool washer and dryer, home security system installation, complete vacuum installation, window bug screens.
<b>More Options</b>	Kitchen Central Island, Upgraded Appliances

\*In our continuing effort to improve and maintain the high standard of the Aegean Homes, the developer reserves the right to modify or change plans, specifications, features and prices without notice. E. & O.E.