



601 BEACH

PINNACLE LIVING

601 BEACH

A Dance for the City

Pinnacle's newest signature tower is positioned at the gateway to downtown Vancouver in the dynamic Beach Crescent neighbourhood on the north shore of False Creek. The undulating curves of the façade create a sense of movement and flow, like a dancer in tune with the rhythm of the city and nature.



Rendering is artist's concept only. E & O.E.

601 Beach a Vibrant Realm

The unique architectural design creates an impressive entrance to the city centre as well as a dynamic and engaging public space within the Beach Crescent neighbourhood. With greenery woven throughout, the ambiance is open and inviting, well suited to active urbanites.

"The slender graceful design of 601 Beach Crescent has been carefully crafted to reflect its unique location at the north end of the Granville Street bridge.

The tower, the podium and the public plaza knit together like one seamless piece of art and will be a stunning addition to Vancouver's skyline, acting as a gateway to downtown Vancouver."

Brian Jackson, Former Chief Planner, City of Vancouver



Rendering is artist's concept only. E & O.E.

A Beach Address in the Heart of Vancouver

601 Beach gives you the luxury of choice.

There are many trendy enclaves to explore,
from Yaletown, Gastown and Chinatown to the West End.

Take the SeaBus to work or play on the North Shore,
or head south to shop in Kitsilano or attend classes at UBC.

Everything is within easy reach.

Balancing the abundance of urban amenities close to home
are beautiful beaches and the lush rainforest of Stanley Park.
Outdoor enthusiasts love the proximity to the local mountains
and world-class Whistler Resort year-round.



A Choice Location

601 Beach embodies all that is great about
Vancouver's spectacular natural setting.
The waterfront is at your doorstep. Scenic pathways
lead to sandy beaches. Stunning vistas of the
North Shore mountains, Burrard Inlet, and Granville
Island's colourful marinas shape your outlook.

elevated



Life at its Finest

Contemplate the beauty of your surroundings as you walk, cycle or jog along the Seawall. Spend time at the beach with a good book or get out on the water with a kayak or paddleboard.

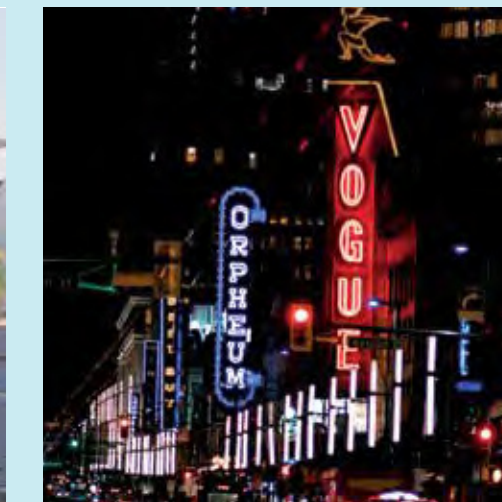
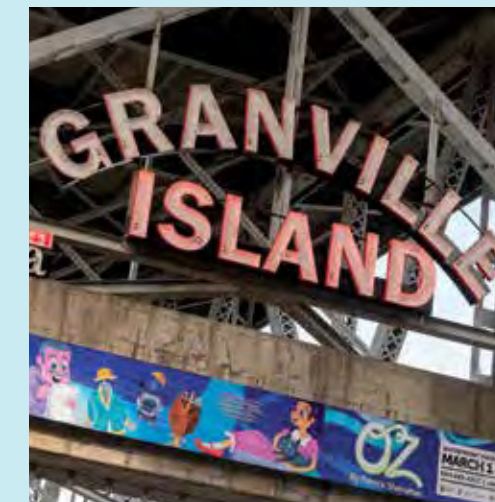


The colourful Aquabus Ferry docks just down the street and is a great way to access all the amenities at Plaza of Nations, in Olympic Village, and on Granville Island where you can pick up a fascinating assortment of food and fresh produce at the Public Market.



Elevated Experiences

Step out to urban living at its finest. The city is a shopper's paradise, celebrated for its culinary diversity. Get social in hip cafes, cocktail lounges and fine dining restaurants.



Take in a concert at the magnificent Orpheum Theatre, the latest exhibit at the Vancouver Art Gallery, or cheer for your favourite sports team at BC Place stadium.

Adding to the vibrant urban culture is the planned revitalization of the downtown Granville Entertainment District, which will re-establish the street as the premier destination for arts and culture.

World-Class City

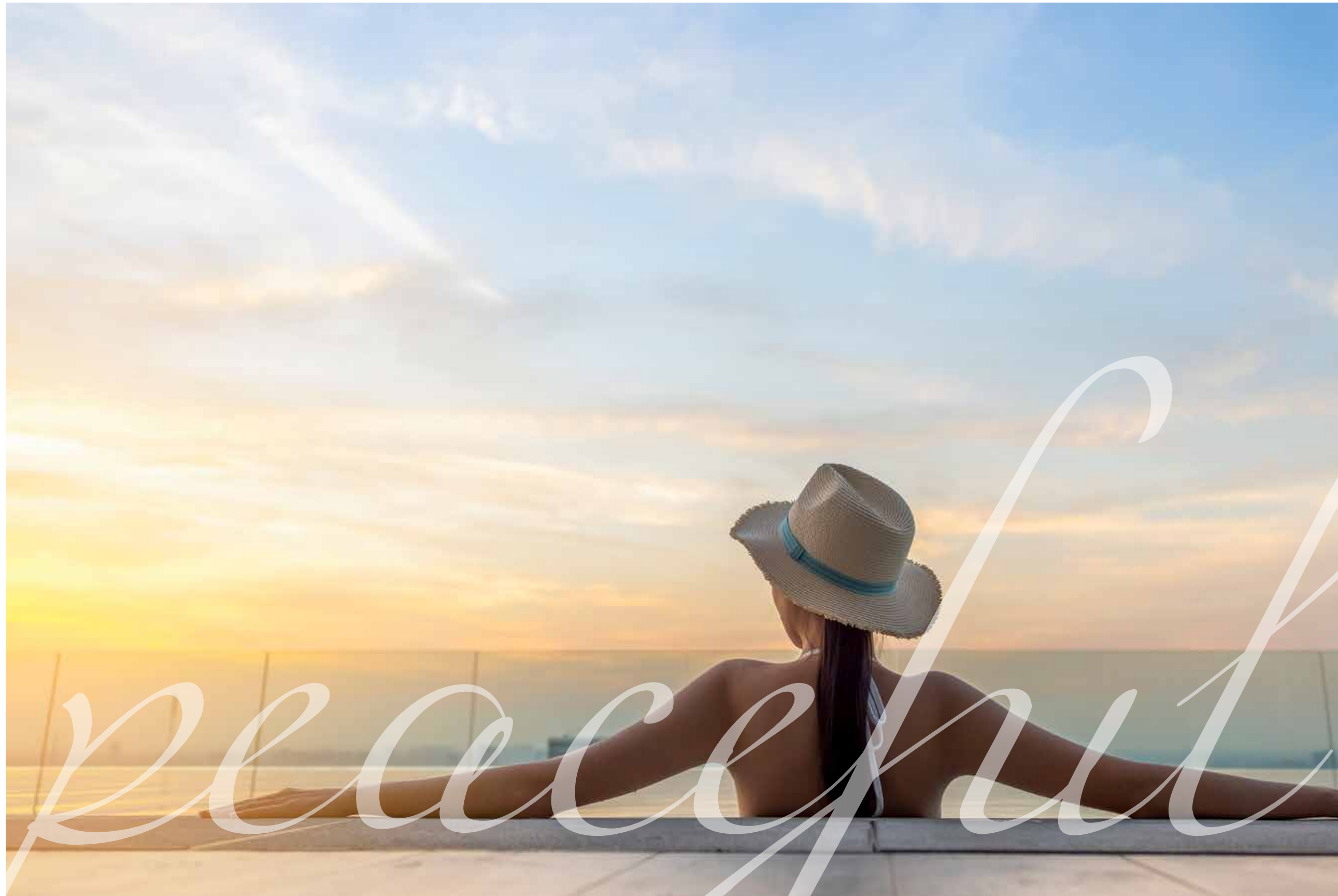


Renowned for its beautiful setting and exceptional quality of life, Vancouver takes centre stage with an elite group of internationally acclaimed cities, from New York, Miami and LA to London, Paris, and Hong Kong.

Elite Living



The bespoke residences at 601 Beach are on par with luxury homes found throughout British Columbia's scenic West Coast and in top cities spanning the globe.



Relax and Recharge Without Leaving Home



The amenity podium is a tranquil oasis, perfect for sunny days and starry nights. Whether you are lounging poolside or entertaining friends, panoramic views and a resort-style ambiance set the mood.

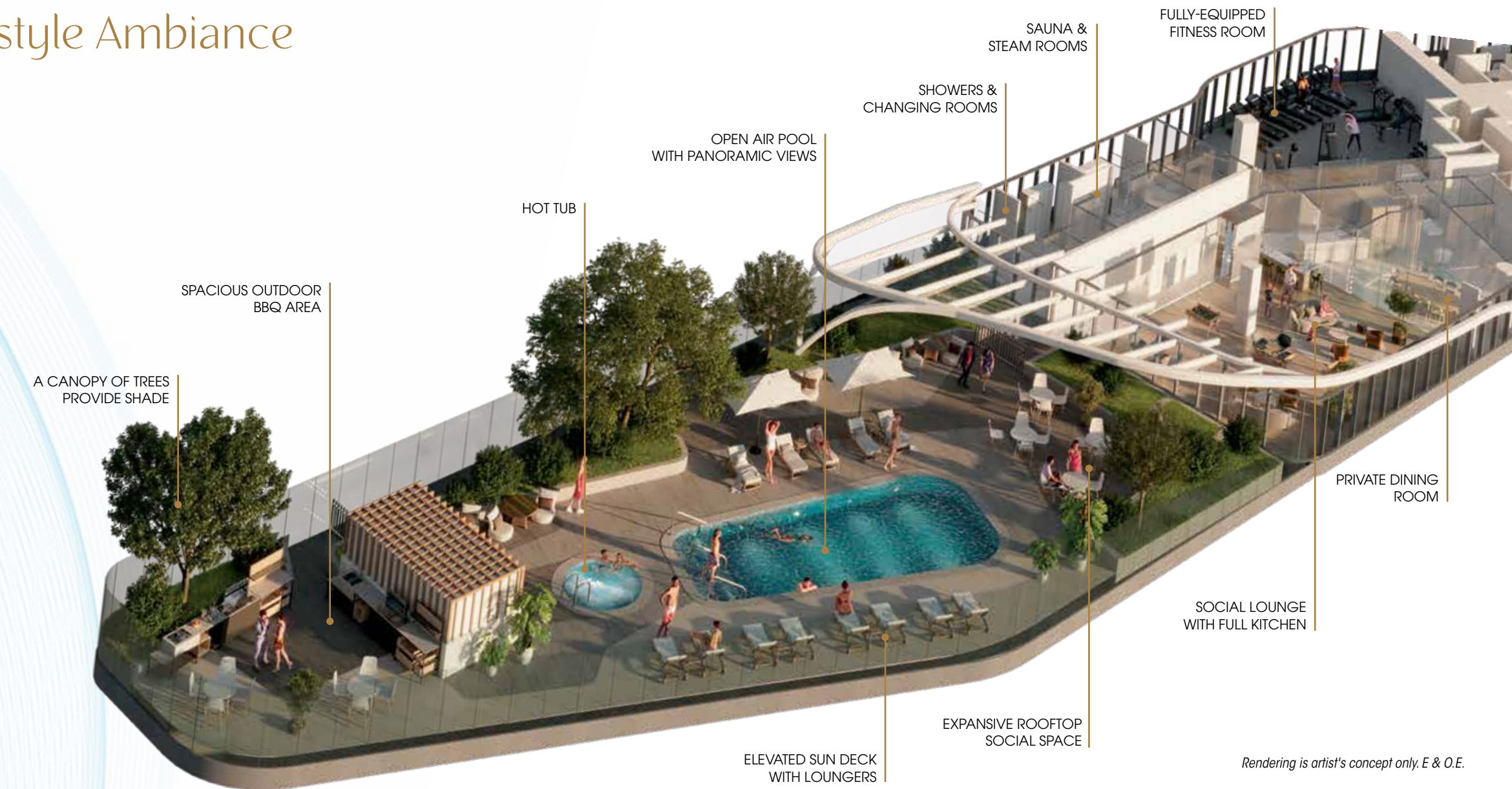
Five-Star Amenities



Rendering is artist's concept only. E & O.E.



Resort-style Ambiance



Rendering is artist's concept only. E & O.E.

Expand your living space and enrich your life. The modern, beautifully appointed social lounge features a full kitchen and multiple seating areas. Ideal for games night and impromptu dinners. There's also a large private dining room with its own kitchen for hosting private family gatherings and special occasions.

Whether you prefer cardio machines, free weights, yoga or pilates, the fitness studio is equipped to inspire a healthy fitness regimen. After working out, a relaxing sauna or steam helps to ease sore muscles.

Inviting by Design

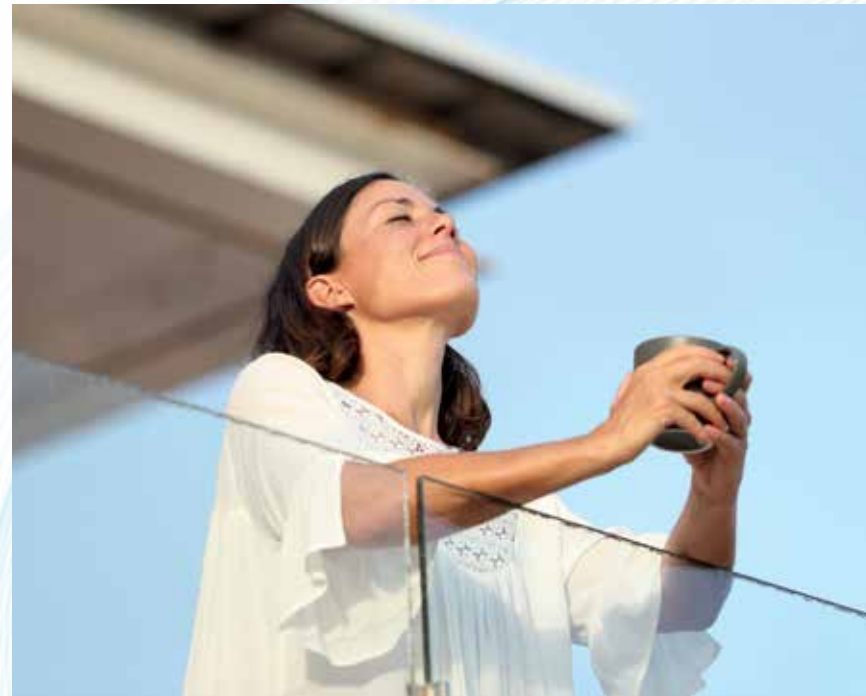
601 Beach is home to a luxurious collection of 1, 2 and 3 bedroom residences. Beautifully appointed interiors create a modern, elegant ambiance. Floor-to-ceiling windows optimize light and views. Two distinctive colour schemes – Balletto & Piana – satisfy individual tastes.

The expansive open living space is well suited to entertaining and relaxing in comfort and style. Brushed oak engineered hardwood floors add timeless beauty. Engineered stone countertops complement the high-end Scavolini cabinetry. Top performance,

easy-to-use appliances by Gaggenau epitomize German ingenuity and inspire a passion for cooking, while the built-in black glass wine fridge showcases delicious options to pair with your meal.

Your private space is bathed in elegance, enveloping both body and mind in soothing style with the spa-like ensuite.

Offering the perfect blend of sophistication and functionality, 601 Beach is a reflection of your refined taste. You'll savour every moment spent at home.



SCAVOLINI

GAGGENAU



Renderings are artist's concept only. E & O.E.

LANDMARK COLLECTION | Floor 35

Customize your Living Space

At 601 Beach, choose from a selection of 1 bedroom, 2 bedroom, and 3 bedroom floorplans, or combine units to create larger homes to suit your lifestyle needs. Such flexibility is ideal if you have children living at home, would like a home office, or need an extra bedroom for visiting relatives and guests. Don't miss this unique opportunity to enjoy the convenience of maintenance-free living without sacrificing space.

RESIDENCE 06 1 Bedroom + Storage

Suite: 646 sq. ft.
Balcony: 51 sq. ft.
Total: 697 sq. ft.

RESIDENCE 01 1 Bedroom + Storage

Suite: 790 sq. ft.
Balcony: 66 sq. ft.
Total: 856 sq. ft.

RESIDENCE 05 1 Bedroom + Storage

Suite: 678 sq. ft.
Balcony: 107 sq. ft.
Total: 785 sq. ft.

RESIDENCE 04 2 Bedrooms + Storage

Suite: 865 sq. ft.
Balcony: 50 sq. ft.
Total: 915 sq. ft.

RESIDENCE 02 2 Bedrooms + Storage

Suite: 995 sq. ft.
Balcony: 78 sq. ft.
Total: 1,073 sq. ft.

RESIDENCE 03 2 Bedrooms + Storage

Suite: 1,225 sq. ft.
Balcony: 48 sq. ft.
Total: 1,273 sq. ft.

COMBINED RESIDENCE 2 Bedrooms + Office + Storage

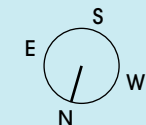
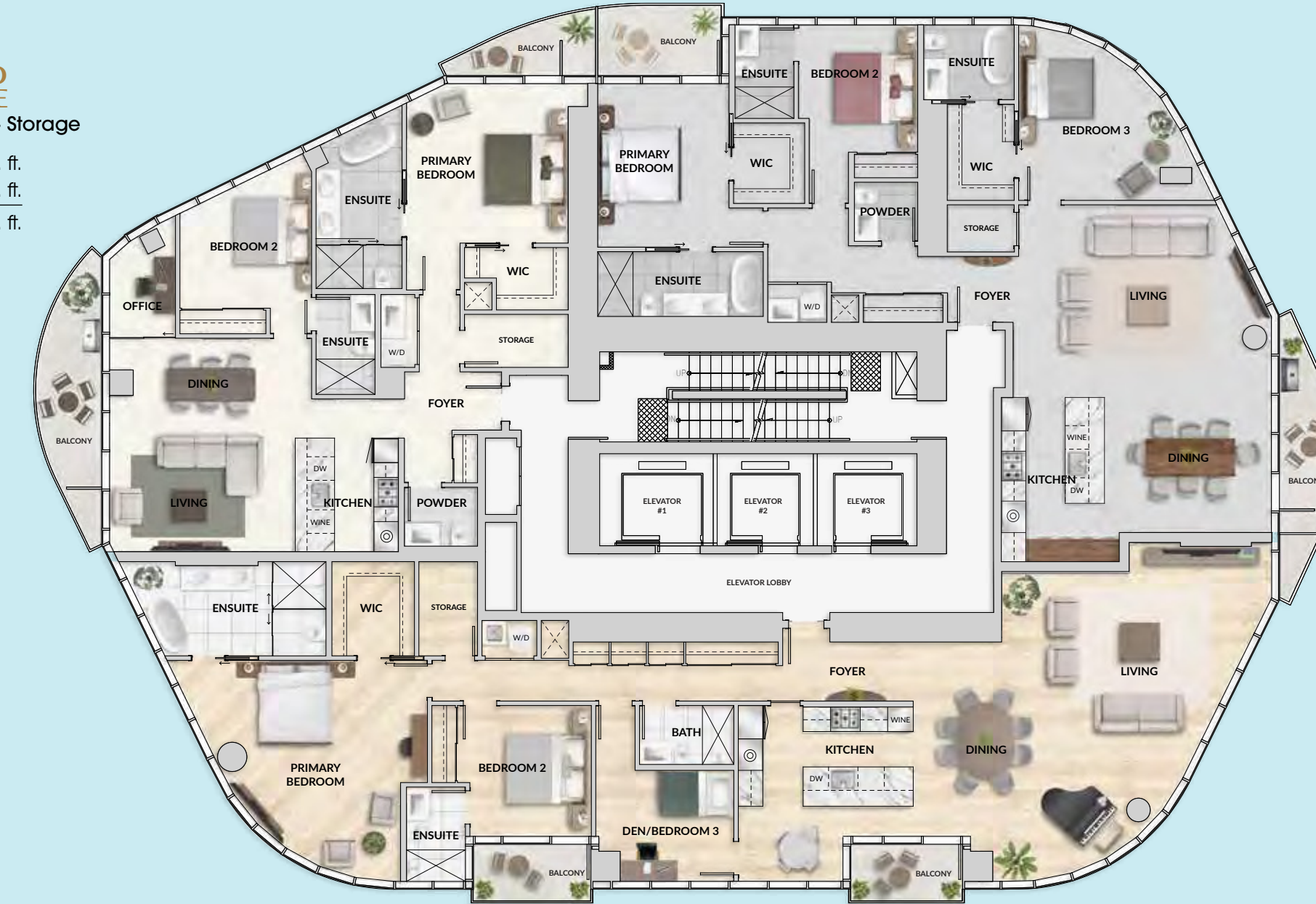
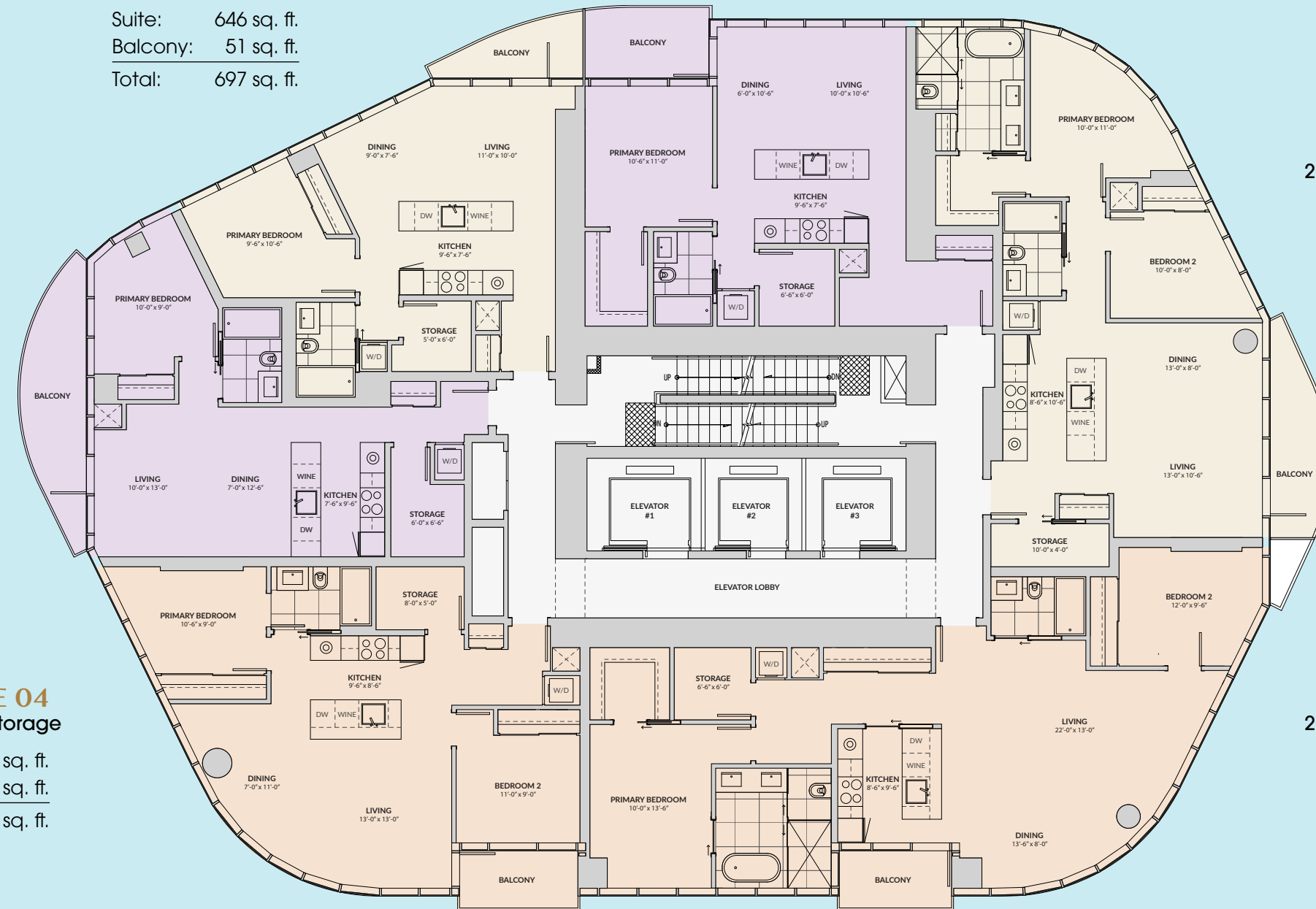
Suite: 1,324 sq. ft.
Balcony: 158 sq. ft.
Total: 1,482 sq. ft.

COMBINED RESIDENCE 3 Bedrooms + Storage

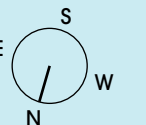
Suite: 1,785 sq. ft.
Balcony: 144 sq. ft.
Total: 1,929 sq. ft.

COMBINED RESIDENCE 3 Bedrooms + Storage

Suite: 2,090 sq. ft.
Balcony: 98 sq. ft.
Total: 2,188 sq. ft.



In the interest of product improvement and maintaining the high standard of these homes, the developer reserves the right to make modifications and changes to plans, specifications and features. Sizes and dimensions are approximate and may vary from actual strata plan and survey. Unit sizes may vary from floor to floor. E. & O.E.



In the interest of product improvement and maintaining the high standard of these homes, the developer reserves the right to make modifications and changes to plans, specifications and features. Sizes and dimensions are approximate and may vary from actual strata plan and survey. Renderings are artist's concept only. E. & O.E.

Pinnacle International – Landmark Builder

Vancouver, San Diego, Toronto

Based in Vancouver, British Columbia, Pinnacle International is one of North America’s leading builders of luxury condominium residences, master-planned communities, hotels and commercial developments.

Over the past 40 years Pinnacle has completed thousands of residences helping to create and enrich neighbourhoods throughout major North American cities. In Greater Vancouver, Pinnacle’s luxurious landmarks dot the landscape in Yaletown, Coal Harbour, False Creek, Vancouver’s West Side and North Vancouver. All reflect Pinnacle’s signature style, a blend of modern sophistication and classic elegance.

Committed to perfecting the art of first-class living, Pinnacle has development plans for many more luxury residences in desirable locations throughout North America.



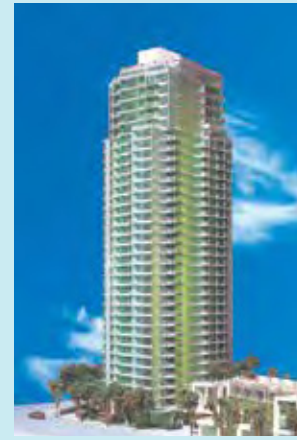
THE PINNACLE
VANCOUVER



PINNACLE HOTEL
WHISTLER



MARRIOTT
PINNACLE HOTEL
VANCOUVER



VENUS
VANCOUVER



CLASSICO
VANCOUVER



BELLAGIO
TORONTO



PINNACLE MUSEUM
TOWER
SAN DIEGO



PINNACLE CENTRE
TOWER A TORONTO



PINNACLE CENTRE
TOWER B TORONTO



PERLA
RICHMOND



JADE
RICHMOND



TAYLOR
VANCOUVER



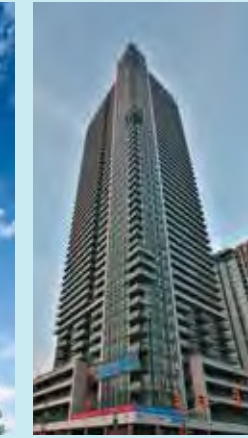
THE RITZ
VANCOUVER



SAPPHIRE
VANCOUVER



SUCCESS TOWER
TORONTO



33 BAY
TORONTO



PINNACLE CROWE
VANCOUVER



PINNACLE LIVING
FALSE CREEK, VANCOUVER



PINNACLE LIVING ON BROADWAY
VANCOUVER



THE PINNACLE
ON ADELAIDE
TORONTO



GRAND PARK 1
MISSISSAUGA



CRYSTAL
MISSISSAUGA



THE ONE
VANCOUVER



PINNACLE LIVING AT CAPSTAN VILLAGE
RICHMOND



AMBER
MISSISSAUGA



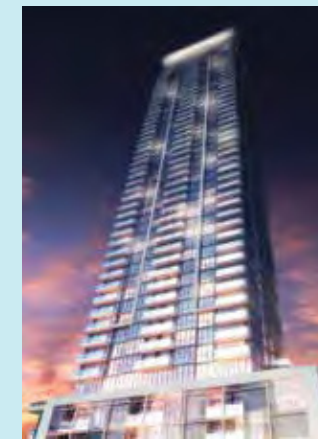
MARQUEE
MISSISSAUGA



WEST 10TH & MAPLE AT ARBUTUS
VANCOUVER



SORRENTO AT CAPSTAN VILLAGE
RICHMOND



GRAND PARK 2
MISSISSAUGA



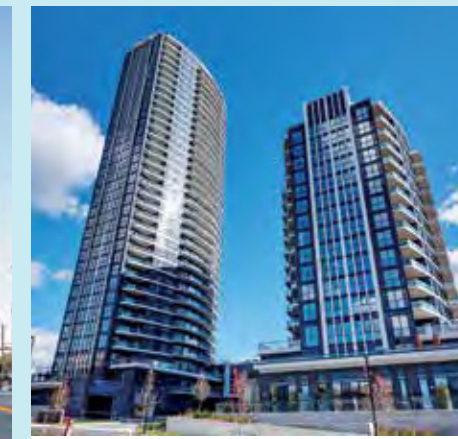
PJ
TORONTO



CYPRESS
ETOBICOKE



PINNACLE ON THE PARK
VANCOUVER



PERLA
MISSISSAUGA



TORINO AT CAPSTAN VILLAGE
RICHMOND



THE PRESTIGE
AT PINNACLE ONE YONGE
TORONTO

Flagship Pinnacle Communities

Pinnacle's portfolio of landmark communities showcases a legacy of innovation and excellence.



THE LANDING



PREMIERE



ESPLANADE WEST



ESPLANADE



ATRIUM EAST & WEST



PINNACLE HOTEL AND RESIDENCES AT THE PIER



TROPHY



CASCADE EAST & WEST



The Pier at Lower Lonsdale in North Vancouver has evolved into a thriving, inclusive waterfront community. The revitalization encompasses popular public amenities and 10 buildings - including the Pinnacle Hotel at the Pier and Pier 7 Restaurant & Bar.



PINNACLE LIVING AT CAPSTAN VILLAGE RICHMOND



SORRENTO AT CAPSTAN VILLAGE RICHMOND



TORINO AT CAPSTAN VILLAGE RICHMOND

Capstan Village is shaping up to be one of the most comprehensive communities in Richmond with eight residential buildings completed and another residential building, hotel and office component under construction.



PINNACLE CENTRE TORONTO

Pinnacle Centre is a cosmopolitan community of inspirational dimensions. The four luxurious condominium towers located at Toronto's Harbourfront embrace the best of downtown.



PINNACLE UPTOWN MISSISSAUGA

Pinnacle Uptown is redefining Uptown Mississauga with its 37-acre master-planned community that includes 10 residential towers, 100 townhomes and a 15-acre public park.

New Pinnacle Communities

Pinnacle's future developments will continue to elevate our quality of life responsibly and sustainably.



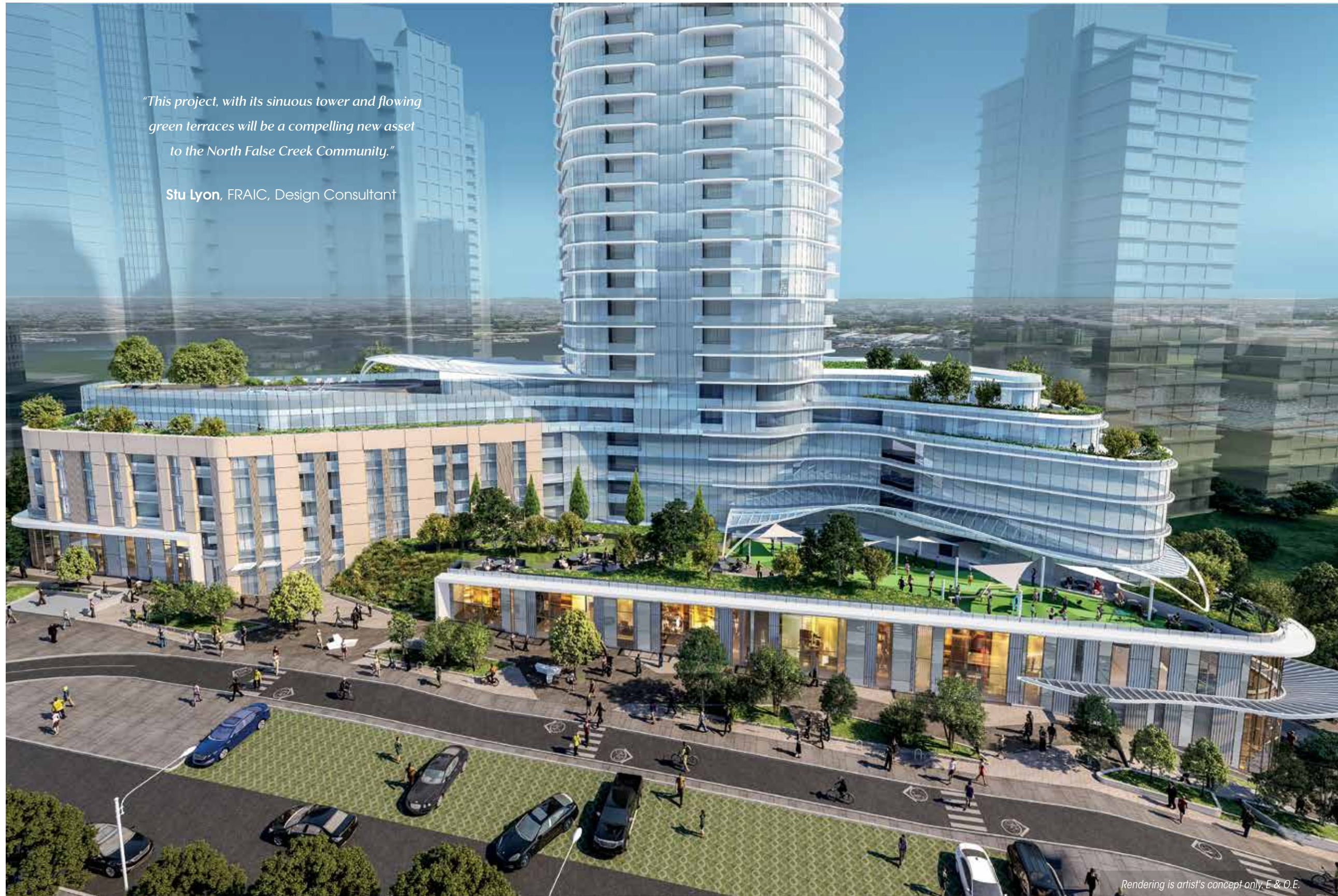
PINNACLE ONE YONGE TORONTO



PINNACLE LOUGHEED BURNABY



PINNACLE BELLEVUE BELLEVUE



"This project, with its sinuous tower and flowing green terraces will be a compelling new asset to the North False Creek Community."

Stu Lyon, FRAIC, Design Consultant

Rendering is artist's concept only. E & O.E.

601 Beach – The Team

Developer
Pinnacle International

Pinnacle International is one of North America's leading builders of luxury residences. In his continued pursuit of excellence and perfection, Founder and President Mike De Cotiis has retained JYOM Architecture and a consortium of experienced consultants to conceptualize an iconic new tower that will boldly mark the entry to downtown Vancouver and anchor the new Beach neighbourhood. 601 Beach will be a proud addition to Pinnacle's array of landmarks in North America.

Architect
JYOM Architecture

JYOM is a global design studio founded by Kandice Kwok and Eric Elliott Lai. Drawing on their international experience, creativity and innovative outlook, JYOM created a movement-inspired tower that exudes elegance and grace yet stands powerful and strong alongside the beautiful Vancouver skyline. The massing and form optimizes site qualities while articulating a dialogue with the unique context. 601 Beach will harmonize the cultural development of the new Beach District with modern lifestyle concepts and a vibrant public realm.

Architect
JYOM Architecture

Landscape Architect
Janet Rosenberg & Studio

Structural Engineer
Glotman Simpson Consulting Engineers

Interior Design
JYOM Architecture

Mechanical Engineer
Reinbold Engineering Group

Electrical Engineer
Nemetz (S/A) & Associates Ltd.

Envelope & Energy Consultant
BC Building Science Ltd.

Acoustic Engineer
BKL Consultants Ltd.

Sustainability Consultant
Kane Consulting Partnership

Civil Engineer
Creus Engineering Ltd.

Geotechnical Consultant
Geopacific Consultants Ltd.

Building Code Consultant
GHL Consultants Ltd.

Traffic Consultant
Bunt & Associates Engineering

Surveyor
Bennett Land Surveying Ltd.

Sales & Marketing
Anson Realty Ltd.

A True Celebration

Here's to making the choice
to call 601 Beach home.



Rendering is artist's concept only. E & O.E.



601 BEACH

Presentation Centre
1133 W Hastings
By appointment 778-300-3601
info@601beach.com

Developed by



601beach.com

Marketed by

