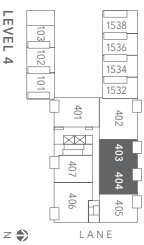
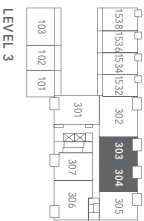
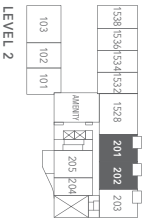


**PLAN B**  
 1 BEDROOM + DEN

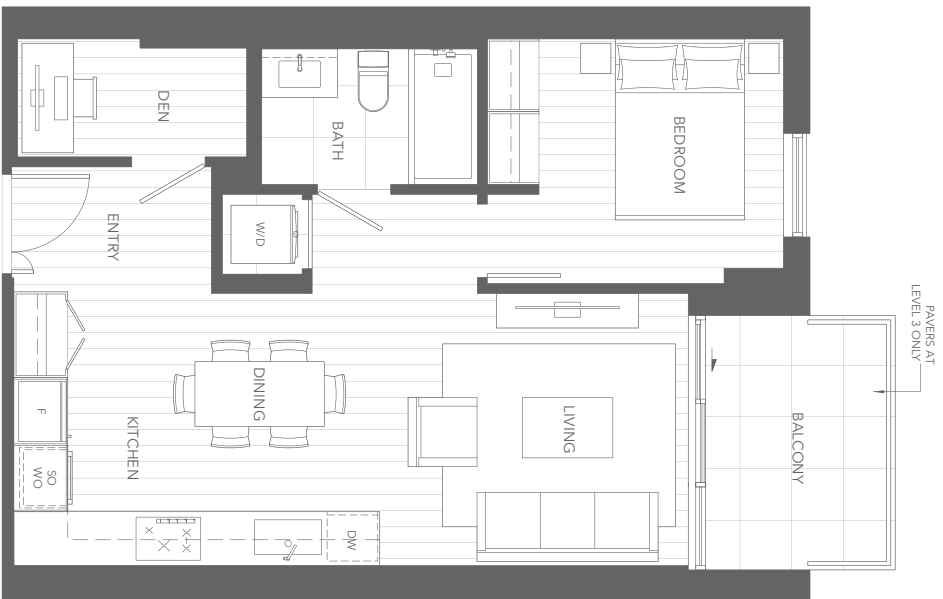
LIVING	636 SF
OUTDOOR	72 - 74 SF
<b>TOTAL</b>	<b>708 - 710 SF</b>



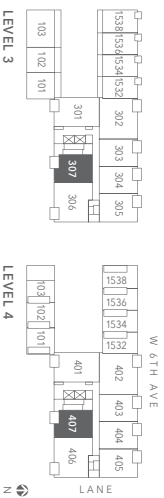
WALL EXTENTS  
 AT UNITS  
 202,304,404



The developer reserves the right to make changes and modifications to the information contained herein. Floorplans and fixtures are subject to change without notice. Please contact a developer's representative for details. This is not an offering or sale, as no offering can only be made after the filing of a disclosure statement and only in jurisdictions where qualified in accordance with applicable local laws (LX01).



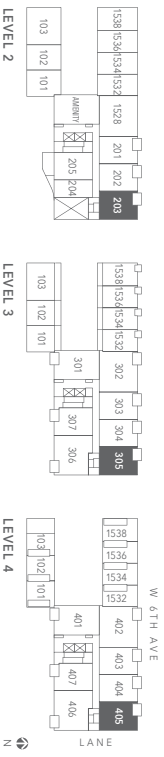
**PLAN B1**  
 1 BEDROOM + DEN  
 LIVING 642 SF  
 OUTDOOR 71 - 73 SF  
**TOTAL 713 - 715 SF**



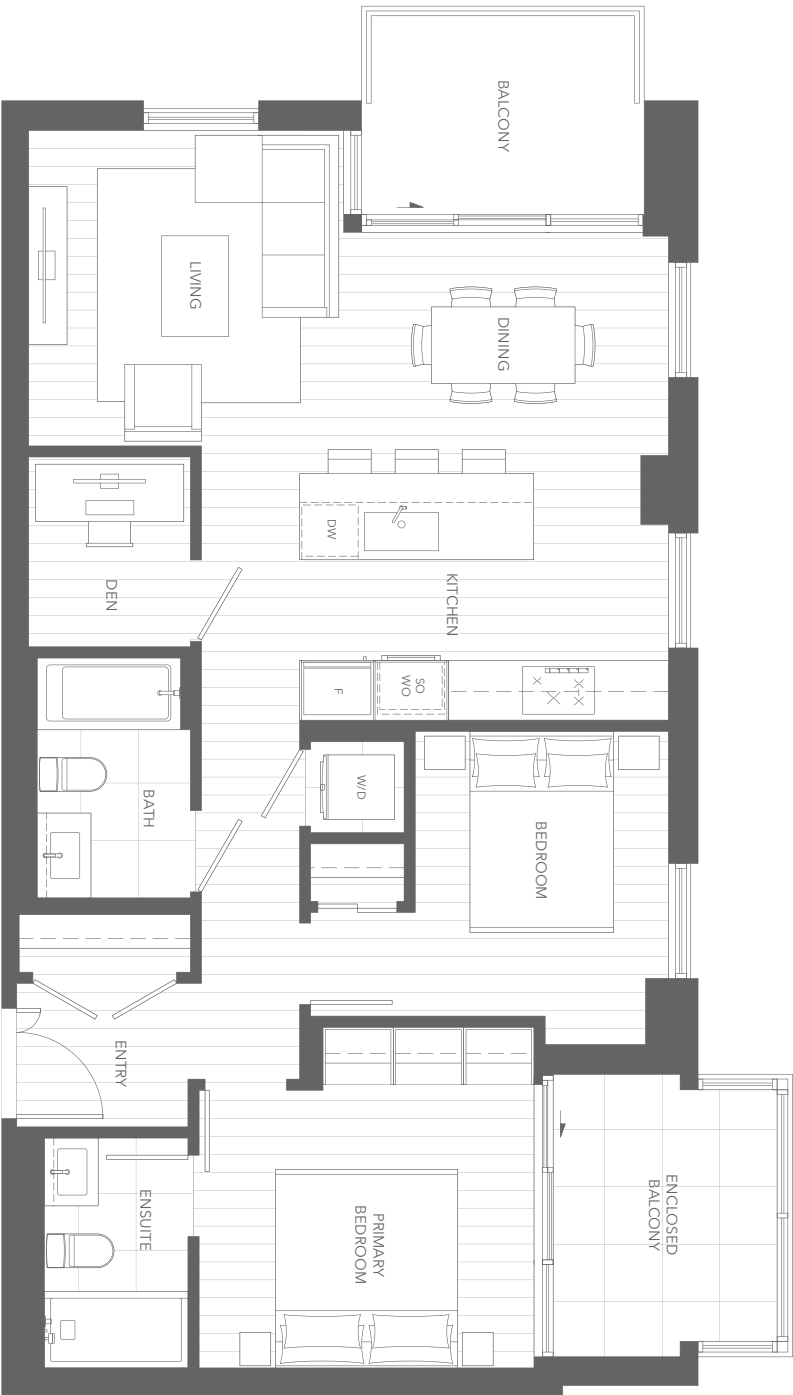
The developer reserves the right to make changes and modifications to the information contained herein. Floorplans and fixtures are subject to change without notice. Please contact a developer's representative for details. This is not an offering and may be made after the filing of a disclosure statement and only in jurisdictions where qualified in accordance with applicable local laws (LX01).



**PLAN B2**  
**1 BEDROOM + DEN**  
 LIVING 657 - 659 SF  
 OUTDOOR 74 - 76 SF  
**TOTAL 733 SF**



The developer reserves the right to make changes and modifications to the information contained herein. Floorplans and fixtures are subject to change without notice. Please contact a developer's representative for details. This is not an offering and may be made after the filing of a disclosure statement and only in jurisdictions where qualified in accordance with applicable local laws (S.001).



**PLAN C**  
 2 BEDROOM + DEN  
 LIVING 1,037 - 1,038 SF  
 OUTDOOR 75 - 76 SF  
 TOTAL 1,113 SF



The developer reserves the right to make changes and modifications to the information contained herein. Floorplans and finishes are subject to change without notice. Please contact a developer's representative for details. This is not an offering and may be made after the filing of a prospectus and only in jurisdictions where qualified in accordance with applicable local laws (S.01).



**PLAN C1**  
2 BEDROOM + DEN

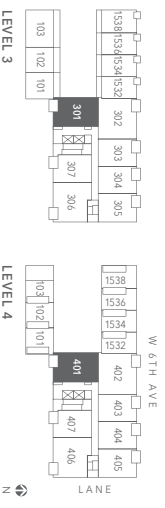
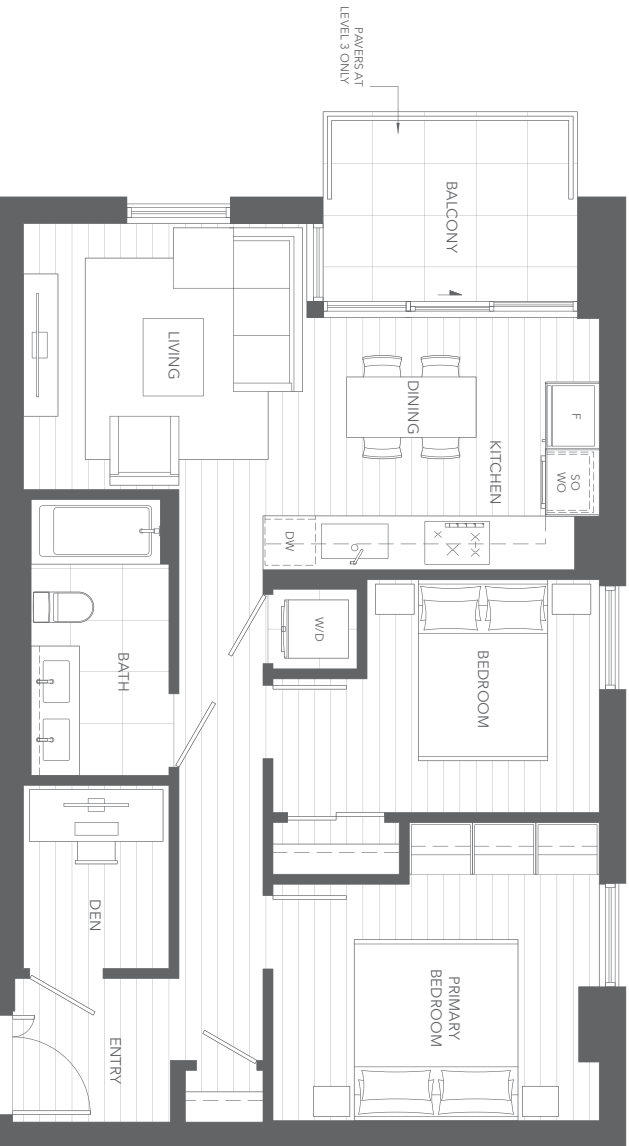
LIVING 820 SF  
OUTDOOR 76 SF  
TOTAL 896 SF



The developer reserves the right to make changes and modifications to the information contained herein. Floorplans and floorplans are subject to change without notice. Please contact a developer's representative for details. This is not an offering or sale, as no offering can only be made after the filing of a disclosure statement, and only in jurisdictions where qualified in accordance with applicable local laws (S.01).



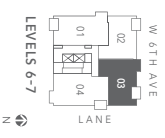
**PLAN C2**  
 LIVING 813 SF  
 OUTDOOR 71 - 76 SF  
 JR 2 BEDROOM + DEN TOTAL 884 - 889 SF



The developer reserves the right to make changes and modifications to the information contained herein. Floorplans and floorplans are subject to change without notice. Please contact a developer's representative for details. This is not an offering or sale, as no offering can only be made after filing of a disclosure statement and only in jurisdictions where qualified in accordance with applicable local laws (S.01).

**PLAN C5**  
2 BEDROOM + DEN

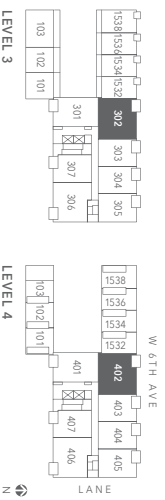
LIVING 948 SF  
OUTDOOR 69 SF  
TOTAL 1,017 SF



The developer reserves the right to make changes and modifications to the information contained herein. Floorplans and floorplans are subject to change without notice. Please contact a developer's representative for details. This is not an offering or sale, as no offering can only be made after the filing of a disclosure statement, and only in jurisdictions where qualified in accordance with applicable local laws (LX01).

## PLAN C6 2 BEDROOM + DEN

LIVING 971 - 995 SF  
 OUTDOOR 72 SF  
**TOTAL 1,043 - 1,067 SF**



The developer reserves the right to make changes and modifications to the information contained herein. Floorplans and floorplans are subject to change without notice. Please contact a developer's representative for details. This is not an offering or sale, as no offering can only be made after the filing of a disclosure statement and only in jurisdictions where qualified in accordance with applicable local laws (S.01).





**PLAN C8**  
2 BEDROOM + DEN

LIVING 1,084 SF  
OUTDOOR 75 SF  
TOTAL 1,159 SF



The developer reserves the right to make changes and modifications to the information contained herein. Floorplans and finishes are subject to change without notice. Please contact a developer's representative for details. This is not an offering. Details may be made after filing of a disclosure statement and only in jurisdictions where qualified in accordance with applicable local laws (S.001).



**PLAN C10**  
2 BEDROOM + DEN

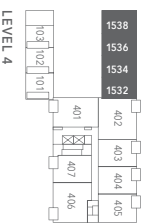
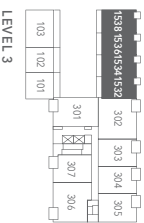
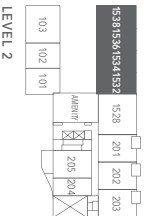
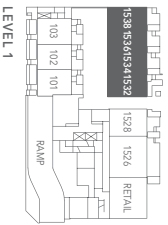
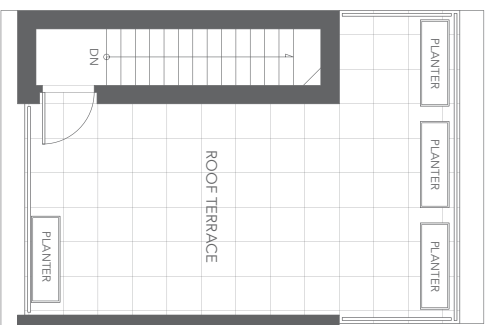
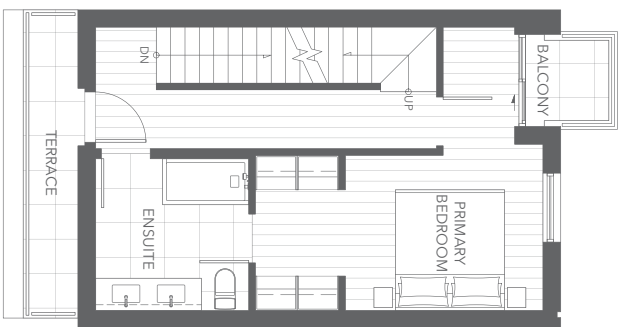
LIVING 1,215 SF  
OUTDOOR 75 SF  
**TOTAL 1,290 SF**

The developer reserves the right to make changes and modifications to the information contained herein. Floorplans and fixtures are subject to change without notice. Please contact a developer's representative for details. This is not an offering and may be made after the filing of a disclosure statement and only in jurisdictions where qualified in accordance with applicable local laws (S.01).





**PLAN TH2**  
 3 BEDROOM + DEN  
 LIVING 1,702 - 1,769 SF  
 OUTDOOR 478 - 577 SF  
**TOTAL 2,180 - 2,346 SF**



The developer reserves the right to make changes and modifications to the information contained herein. Floorplans and finishes are subject to change without notice. Please contact a developer's representative for details. This is not an offering or sale, as no offering can only be made after the filing of a disclosure statement and only in jurisdictions where qualified in accordance with applicable local laws (LX01).



W 6TH AVE

E LANE



LIVING 1,685 SF  
 OUTDOOR 144 SF  
**TOTAL 1,829 SF**

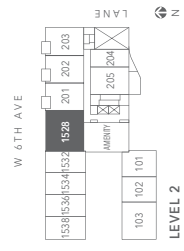
**PLAN TH3**  
 3 BEDROOM + DEN + STORAGE



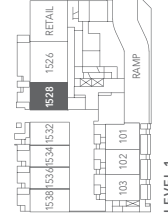
MAIN LEVEL



UPPER LEVEL



LEVEL 2



LEVEL 1

The developer reserves the right to make changes and modifications to the information contained herein. Floor plans and layouts are subject to change without notice. Please contact a developer sales representative for details. This is not an offering for sale, as an offering can only be made after the filing of a disclosure statement, and only in jurisdictions where qualified in accordance with applicable local laws 1.30.L.

