



MILLENNIUM WATER

VANCOUVER'S LAST WATERFRONT COMMUNITY

PLAN H1 LOWER FLOOR

128 ATHLETES WAY

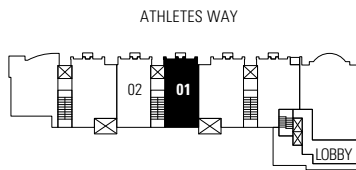
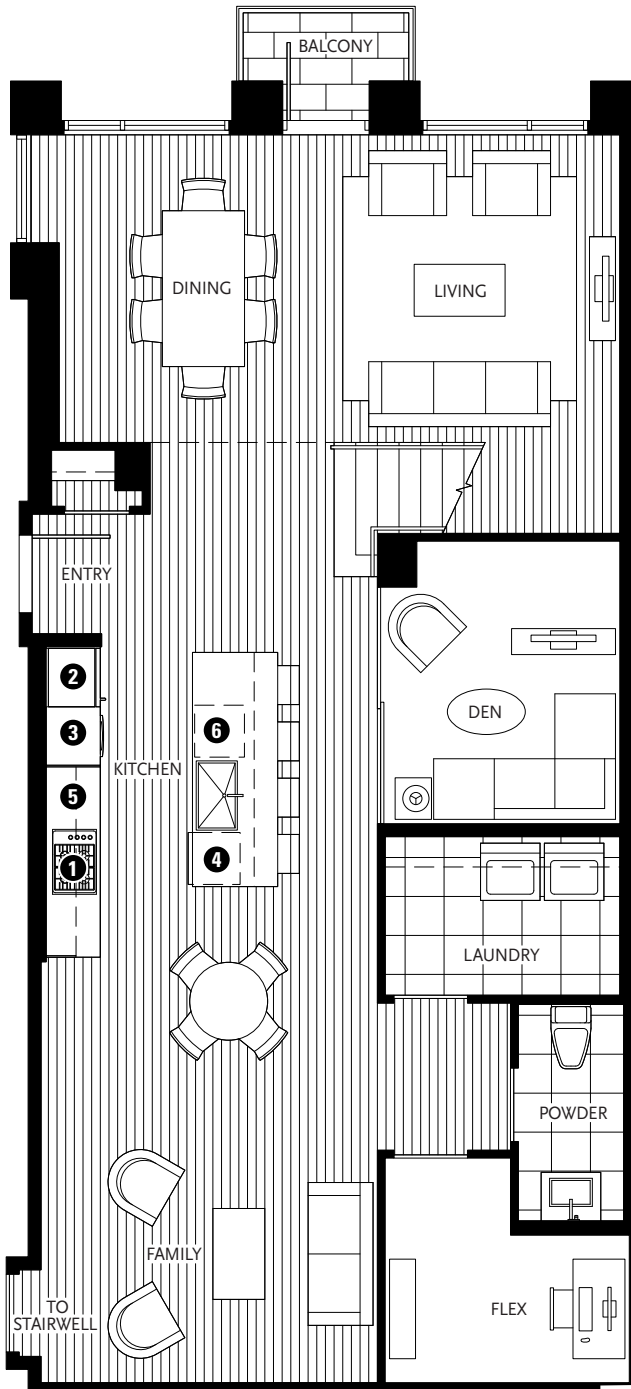
3 BEDROOM + DEN + FAMILY + ENCLOSED BALCONY + FLEX

2241 SF LIVING

111 SF BALCONY

197 SF TERRACE

- 1 Miele gas cooktop
- 2 Sub-Zero refrigerator
- 3 Miele wall oven & Panasonic built-in microwave
- 4 Miele dishwasher
- 5 Eggersmann of Germany eco-wood cabinetry
- 6 Sub-Zero wine cooler
- 7 Cabina custom built walk-in closet from Italy



MANITOBA STREET



2ND FLOOR

Washer/dryer are optional items. Dimensions, sizes, areas, specifications, layouts and materials are approximate only and subject to change without notice. Floorplates and unit numbers may vary between floors and appliance brands and sizes are subject to change. Please see a sales representative for more details. E.&O.E.



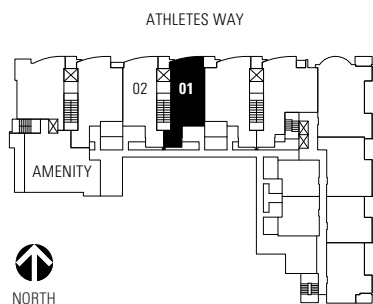
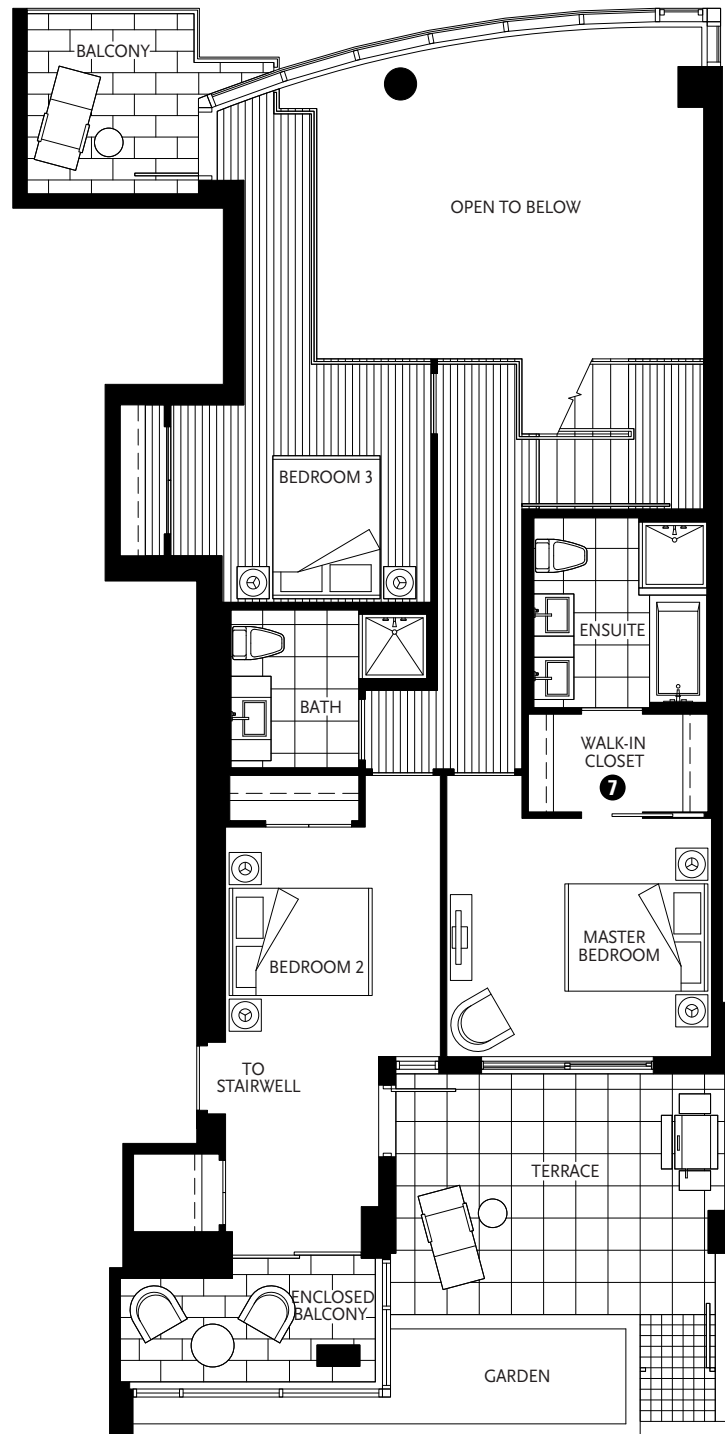


MILLENNIUM WATER

VANCOUVER'S LAST WATERFRONT COMMUNITY

PLAN H1 UPPER FLOOR

128 ATHLETES WAY



UNIT 201 – UPPER FLOOR

Washer/dryer are optional items. Dimensions, sizes, areas, specifications, layouts and materials are approximate only and subject to change without notice. Floorplates and unit numbers may vary between floors and appliance brands and sizes are subject to change. Please see a sales representative for more details. E.&O.E.

