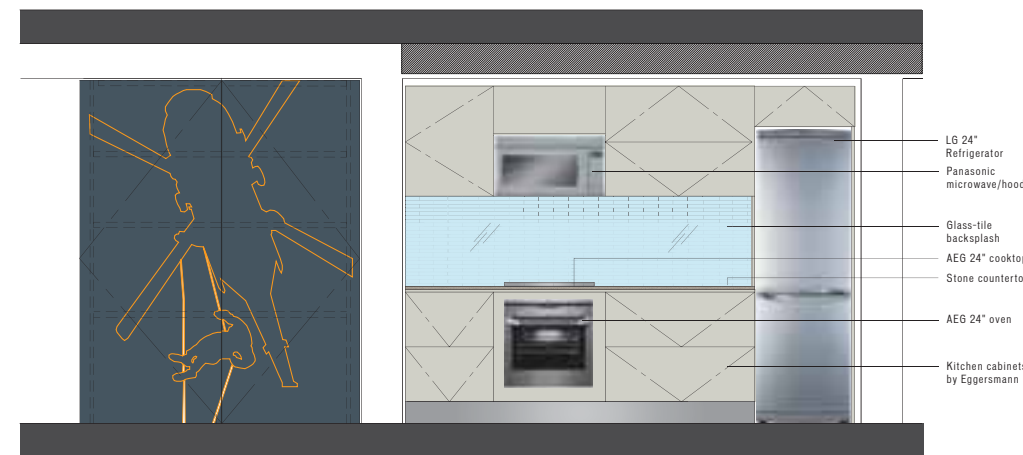
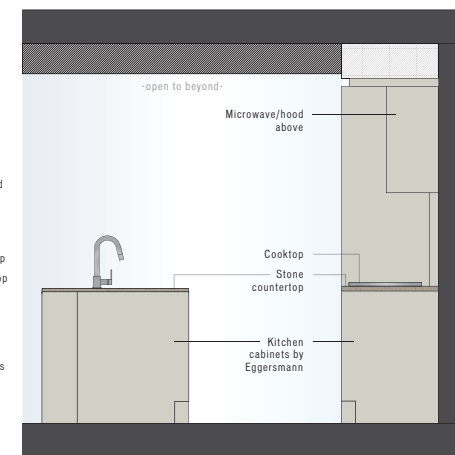


KITCHEN ELEVATIONS SCALE: 1/2" = 1'0"

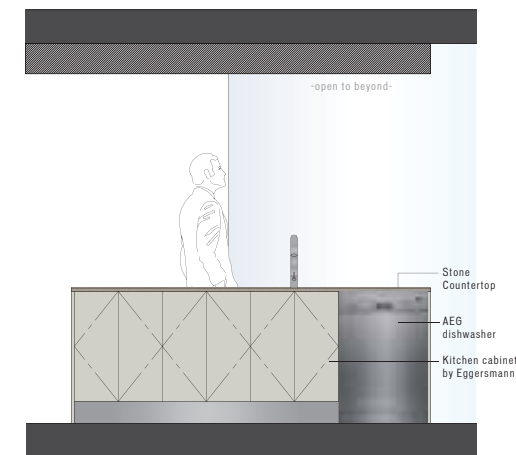


KITCHEN ELEVATION C

KITCHEN SECTION A

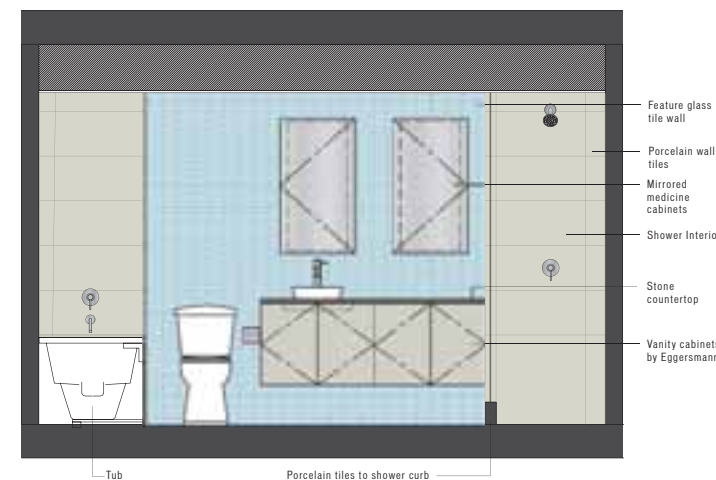


KITCHEN ELEVATION B



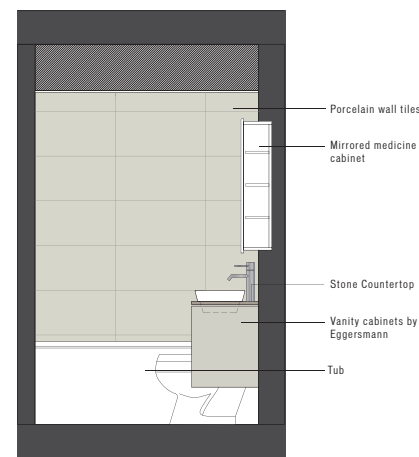
Upgrade option:
Retractable door with desk behind. Blackboard finish.

BATHROOM ELEVATIONS SCALE: 1/2" = 1'0"

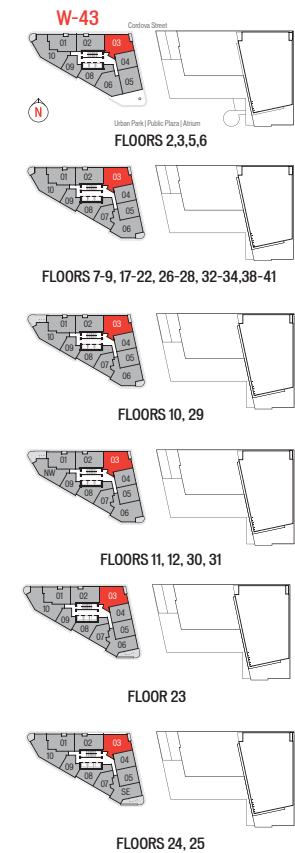


ENSUITE ELEVATION A

ENSUITE ELEVATION B



- 1 Entry / Foyer
- 2 Storage
- 3 Ensuite
- 4 Closet
- 5 Master Bedroom
- 6 Bedroom-2
- 7 Closet
- 8 Living
- 9 Deck
- 10 Dining
- 11 Desk (upgrade option)
- 12 Kitchen
- 13 Laundry / Coat Closet
- 14 Bathroom-2



PLAN
C

TOWER W43

2 BEDROOM
2 BATH
1,031 SF LIVING
46 SF DECK

SPECIFICATIONS:

- Select from 10 custom designs for the suite entry door
- Exposed concrete, over-height ceilings
- Large sliding doors to bedrooms, allowing flex-space options, in most plans
- Tilo-patterned oak floors
- Optional integrated work spaces
- Polished stone kitchen countertops
- Full-height glass-tile kitchen backsplash, 5 colours to choose from
- Most master baths include a separate shower and tub
- Dual flush toilet
- Large format porcelain floor and wall tiles in bathrooms
- Ensuite glass-tile feature wall, 5 colours to choose from
- Eggersmann kitchens, custom designed and finished for Woodward's
- Appliance package includes:
AEG 24" cooktop (Stainless Steel)
AEG 24" oven (Stainless Steel)
AEG dishwasher (Stainless Steel)
Panasonic microwave/hoodfan (Stainless Steel)
LG 24" titanium finish refrigerator
Samsung stacked washer/dryer
Garburator

DISCLAIMER:

In the interest of continuing improvement, the developer reserves the right to make modifications to the product design, pricing and specifications without notice. Square footages are approximate and may vary. E.&O.E.