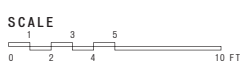
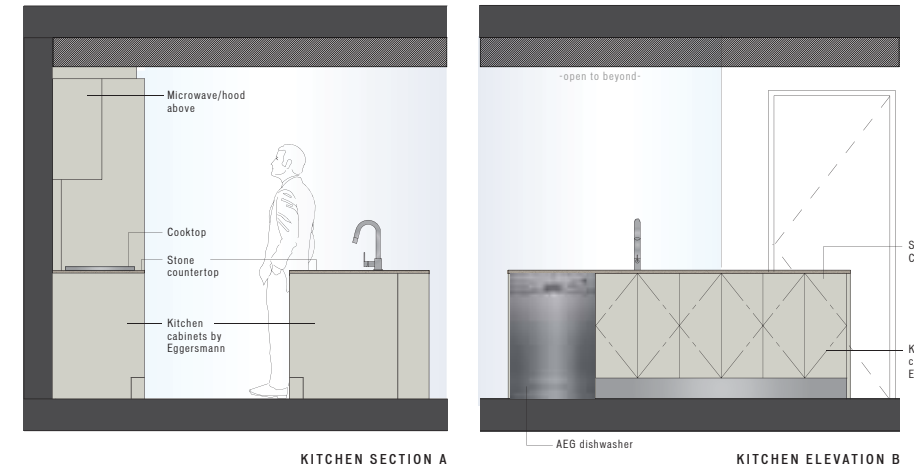


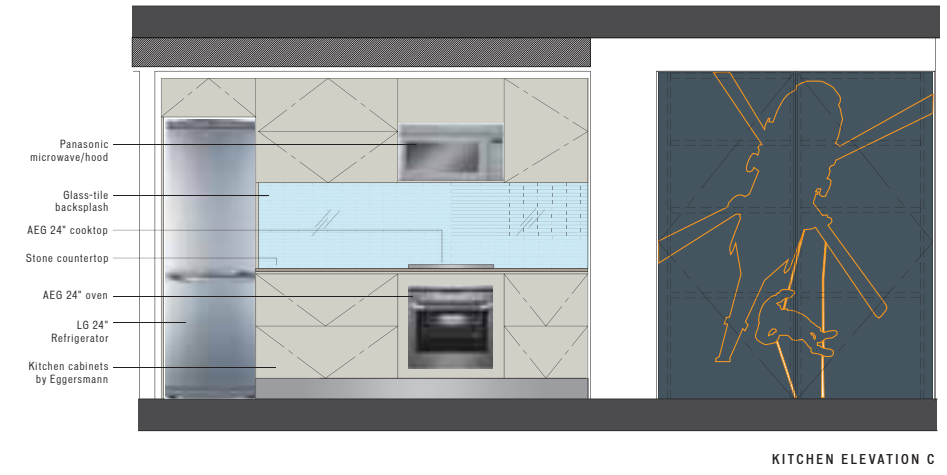
- 1 Entry / Foyer
- 2 Coat Closet
- 3 Laundry Storage
- 4 Kitchen
- 5 Desk (upgrade option)
- 6 Dining
- 7 Living
- 8 Deck
- 9 Den
- 10 Closet
- 11 Bedroom-2
- 12 Bathroom-2
- 13 Closet
- 14 Master Bedroom
- 15 Ensuite



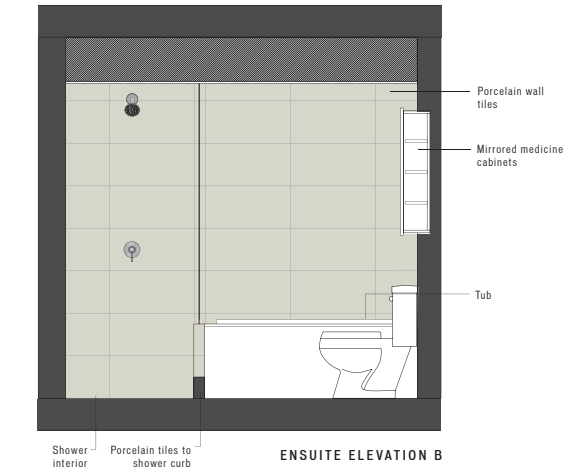
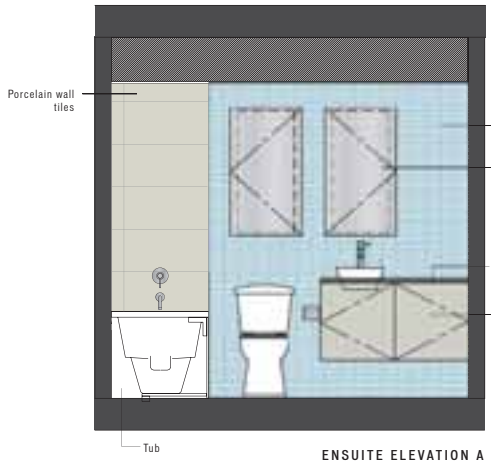
KITCHEN ELEVATIONS SCALE: 1/2" = 1'0"



Upgrade option:  
Retractable door with desk behind. Blackboard finish.



BATHROOM ELEVATIONS SCALE: 1/2" = 1'0"



**W**

PLAN  
**F**

TOWER W43

2 BEDROOM • DEN  
2 BATH  
1,149 SF LIVING  
93 SF DECK

**SPECIFICATIONS:**

- Select from 10 custom designs for the suite entry door
- Exposed concrete, over-height ceilings
- Large sliding doors to bedrooms, allowing flex-space options, in most plans
- Tilo-patterned oak floors
- Optional integrated work spaces
- Polished stone kitchen countertops
- Full-height glass-tile kitchen backsplash, 5 colours to choose from
- Most master baths include a separate shower and tub
- Dual flush toilet
- Large format porcelain floor and wall tiles in bathrooms
- Ensuite glass-tile feature wall, 5 colours to choose from
- Eggersmann kitchens, custom designed and finished for Woodward's
- Appliance package includes:  
AEG 24" cooktop (Stainless Steel)  
AEG 24" oven (Stainless Steel)  
AEG dishwasher (Stainless Steel)  
Panasonic microwave/hoodfan (Stainless Steel)  
LG 24" titanium finish refrigerator  
Samsung stacked washer/dryer  
Garburator

**DISCLAIMER:**

In the interest of continuing improvement, the developer reserves the right to make modifications to the product design, pricing and specifications without notice. Square footages are approximate and may vary. E.&O.E.