



CANADA HOUSE

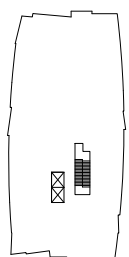
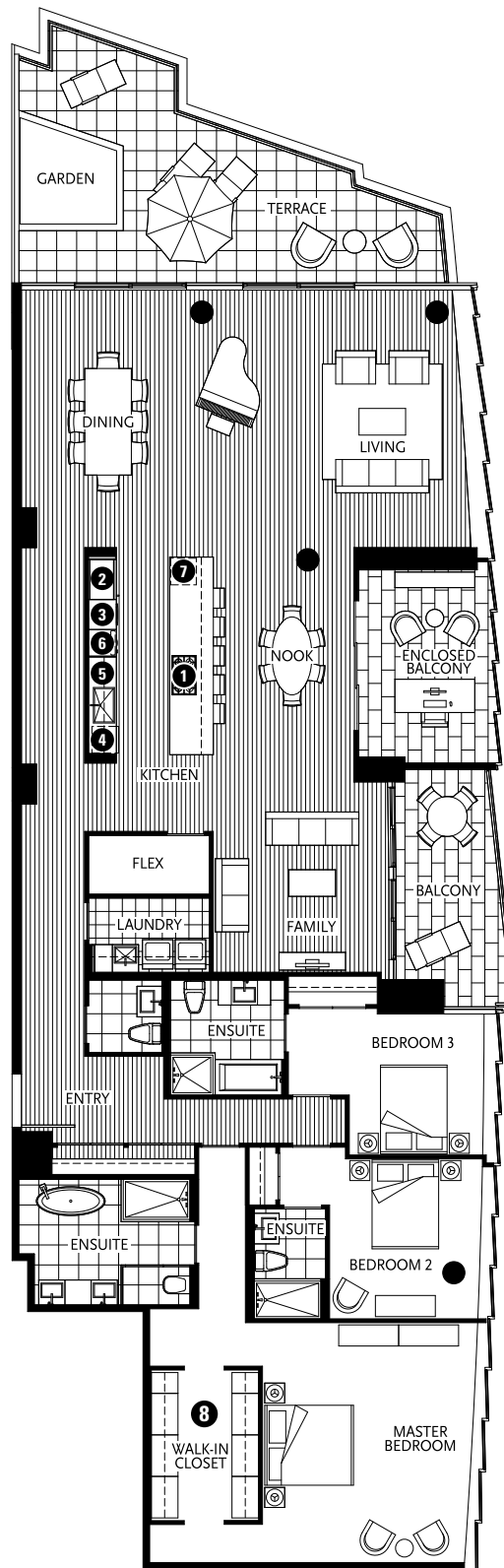
AT MILLENNIUM WATER

PLAN E5F

151 ATHLETES WAY

3 BEDROOM + FAMILY
 + FLEX + ENCLOSED BALCONY
 3153 SF LIVING
 133 SF BALCONY
 470 SF TERRACE

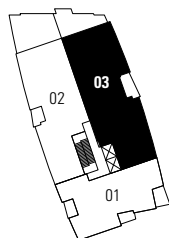
- 1 Miele 5-zone gas cooktop
- 2 Sub-Zero refrigerator
- 3 Miele wall oven & Miele speed oven
- 4 Miele dishwasher
- 5 Eggersmann of Germany eco-wood cabinetry
- 6 Miele built-in coffee maker with Miele warming drawer
- 7 Sub-Zero wine cooler
- 8 Cabina custom built walk-in closet from Italy



181 ATHLETES WAY



NORTH



151 ATHLETES WAY

5TH FLOOR

Washer/Dryer are optional items. Dimensions, sizes, areas, specifications, layouts and materials are approximate only and subject to change without notice. Floor plates will vary between floors and appliance brands and sizes are subject to change. Please see a sales representative for more details. E.&O.E.

