



MILLENNIUM WATER

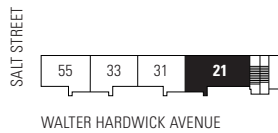
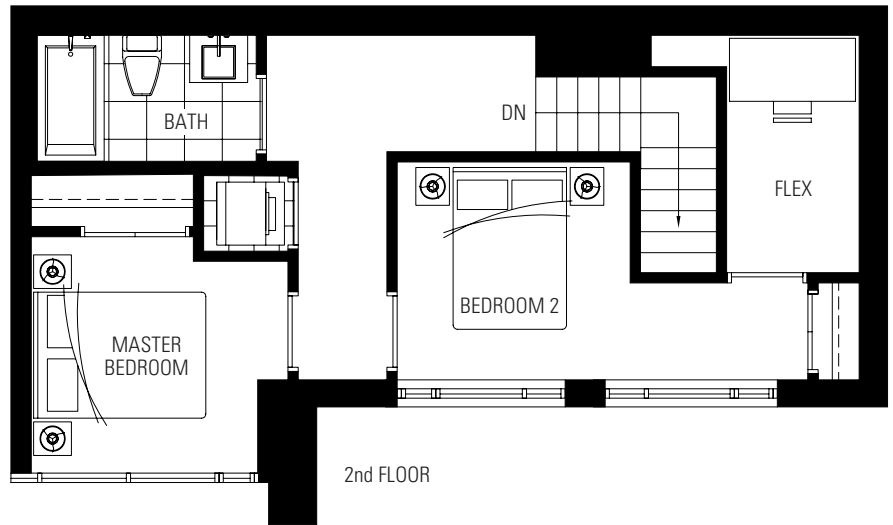
A GREEN WATERFRONT COMMUNITY

PLAN R (TOWNHOME)

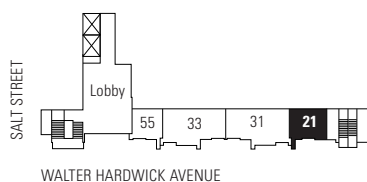
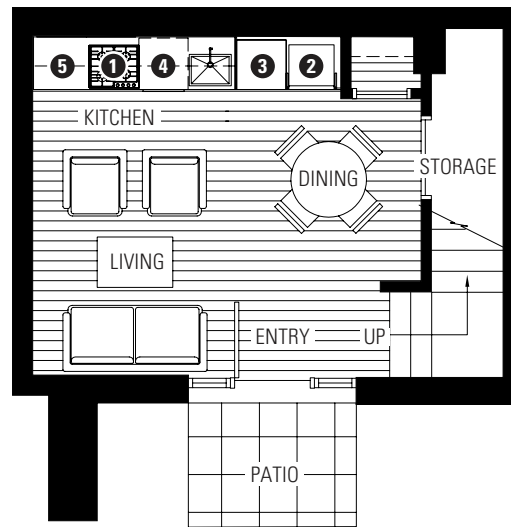
21 WALTER HARDWICK AVENUE

2 BEDROOM + FLEX
849 SF LIVING
38 SF PATIO

- 1 Miele gas cooktop
- 2 Miele refrigerator
- 3 Miele wall oven & Panasonic built-in microwave
- 4 Miele dishwasher
- 5 Eggersmann of Germany eco-wood cabinetry



2ND FLOOR



NORTH

GROUND FLOOR

Washer / dryer are optional items. Dimensions, sizes, areas, specifications, layouts and materials are approximate only and subject to change without notice. Floor plates will vary between floors and appliance brands and sizes are subject to change. Please see a sales representative for more details. E.&O.E.

