



# MILLENNIUM WATER

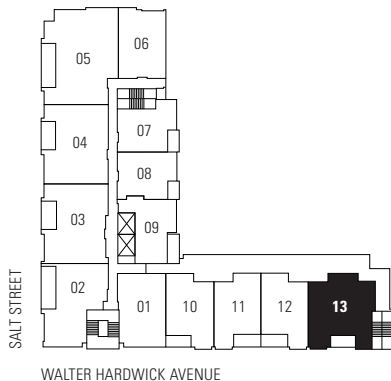
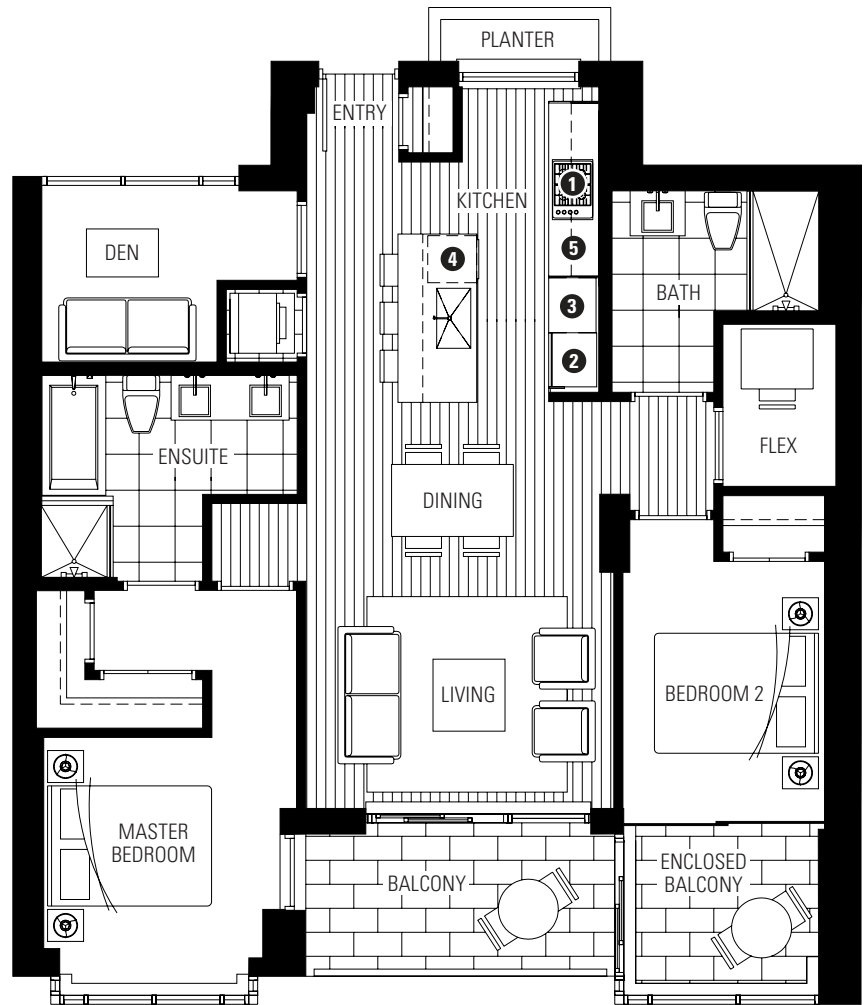
A GREEN WATERFRONT COMMUNITY

## PLAN L

## 77 WALTER HARDWICK AVENUE

2 BEDROOM + DEN + FLEX + EB  
1140 SF LIVING  
84 SF BALCONY

- 1 Miele gas cooktop
- 2 Sub-Zero refrigerator
- 3 Miele wall oven & Panasonic built-in microwave
- 4 Miele dishwasher
- 5 Eggersmann of Germany eco-wood cabinetry



NORTH

### 4TH - 5TH FLOOR

Washer / dryer are optional items. Dimensions, sizes, areas, specifications, layouts and materials are approximate only and subject to change without notice. Floor plates will vary between floors and appliance brands and sizes are subject to change. Please see a sales representative for more details. E.&O.E.

