



MILLENNIUM WATER

A GREEN WATERFRONT COMMUNITY

PLAN M

77 WALTER HARDWICK AVENUE

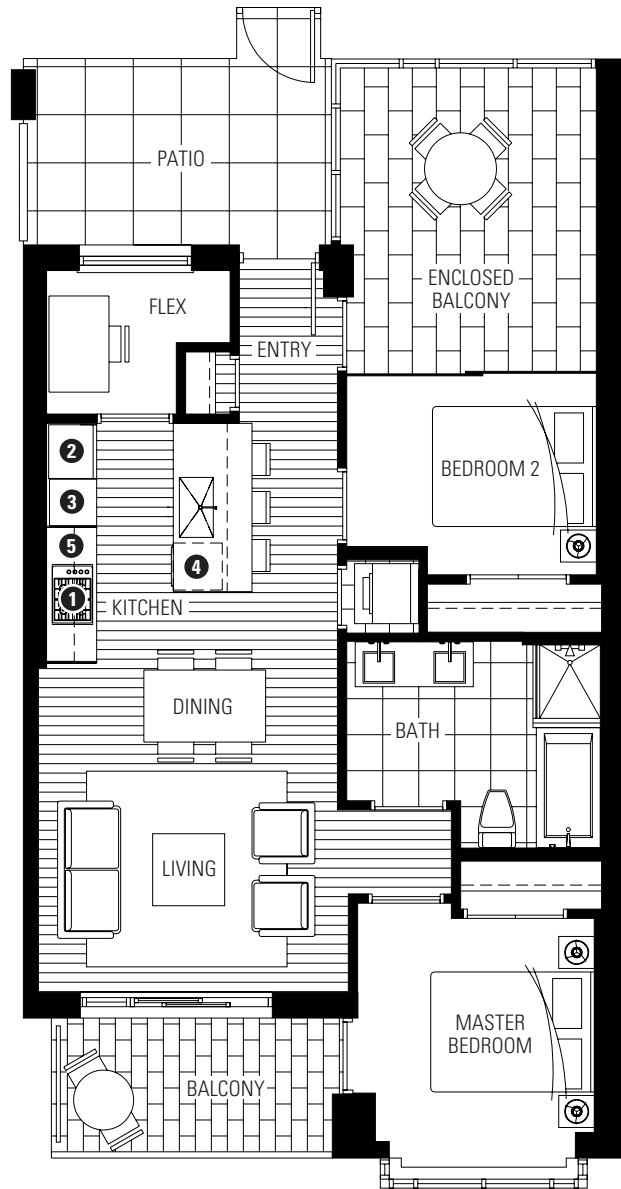
2 BEDROOM + FLEX + EB

949-966 SF LIVING

81-84 SF BALCONY

74-111 SF PATIO

- 1 Miele gas cooktop
- 2 Sub-Zero refrigerator
- 3 Miele wall oven & Panasonic built-in microwave
- 4 Miele dishwasher
- 5 Eggersmann of Germany eco-wood cabinetry



3RD FLOOR

Washer/dryer are optional items. Dimensions, sizes, areas, specifications, layouts and materials are approximate only and subject to change without notice. Floor plates will vary between floors and appliance brands and sizes are subject to change. Please see a sales representative for more details. E.&O.E.

