



MILLENNIUM WATER

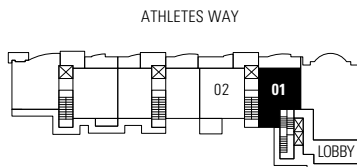
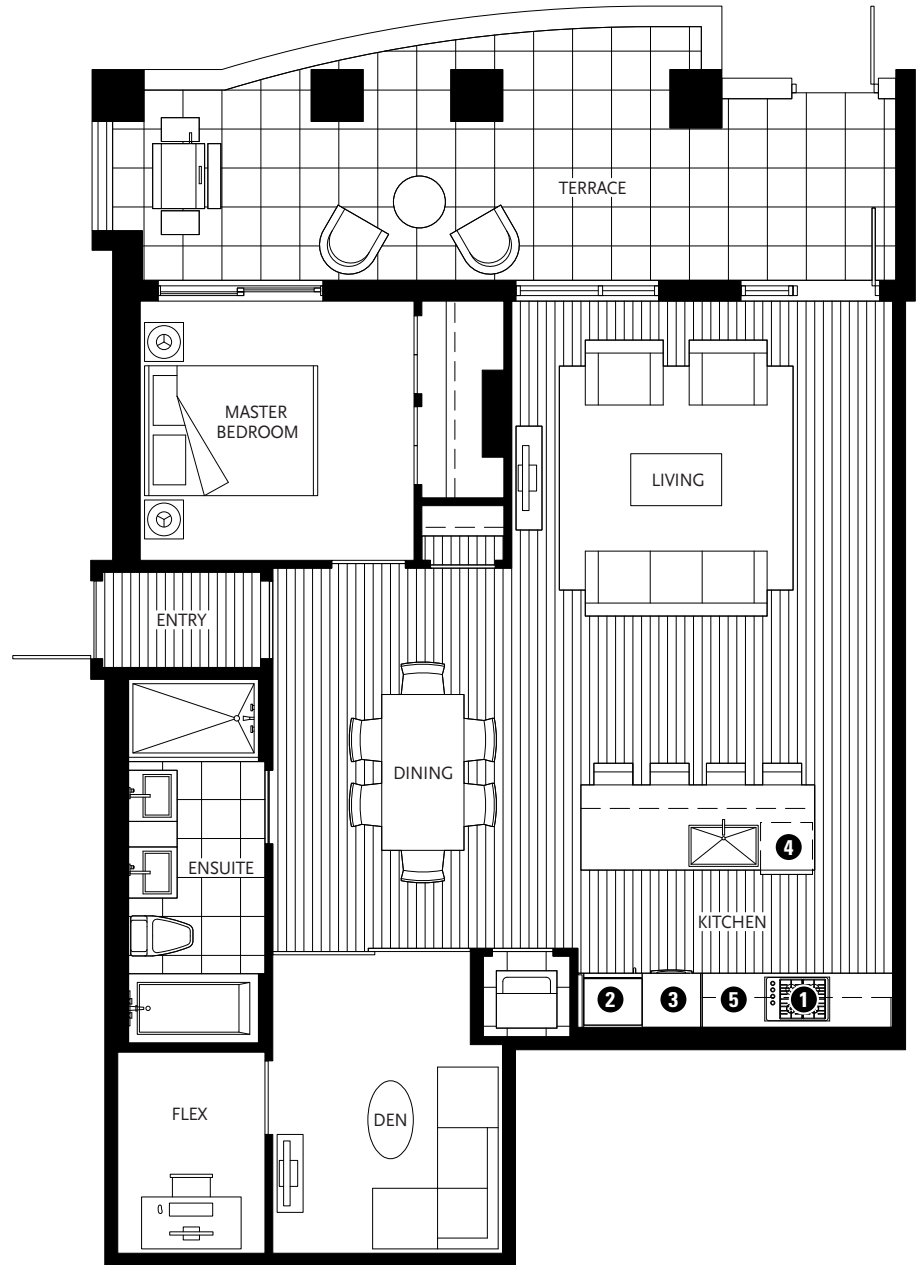
VANCOUVER'S LAST WATERFRONT COMMUNITY

PLAN L

118 ATHLETES WAY

1 BEDROOM + DEN + FLEX
1061 SF LIVING
278 SF TERRACE

- 1 Miele gas cooktop
- 2 Sub-Zero refrigerator
- 3 Miele wall oven & Panasonic built-in microwave
- 4 Miele dishwasher
- 5 Eggersmann of Germany eco-wood cabinetry



MANITOBA STREET



GROUND FLOOR

Washer/dryer are optional items. Dimensions, sizes, areas, specifications, layouts and materials are approximate only and subject to change without notice. Floorplates and unit numbers may vary between floors and appliance brands and sizes are subject to change. Please see a sales representative for more details. E.&O.E.



RENNIE
MARKETING
SYSTEMS
GREEN