



# MILLENNIUM WATER

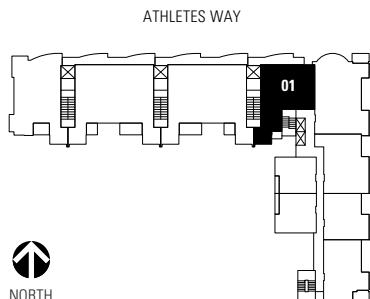
VANCOUVER'S LAST WATERFRONT COMMUNITY

## PLAN T LOWER FLOOR

## 118 ATHLETES WAY

2 BEDROOM + FAMILY + ENCLOSED BALCONY + FLEX  
2081 SF LIVING  
1704 SF TERRACE

- 1 Miele gas cooktop
- 2 Sub-Zero refrigerator
- 3 Miele wall oven & Panasonic built-in microwave
- 4 Miele dishwasher
- 5 Eggersmann of Germany eco-wood cabinetry
- 6 Cabina custom built walk-in closet from Italy



6TH FLOOR

Washer/dryer are optional items. Dimensions, sizes, areas, specifications, layouts and materials are approximate only and subject to change without notice. Floorplates and unit numbers may vary between floors and appliance brands and sizes are subject to change. Please see a sales representative for more details. E.&O.E.



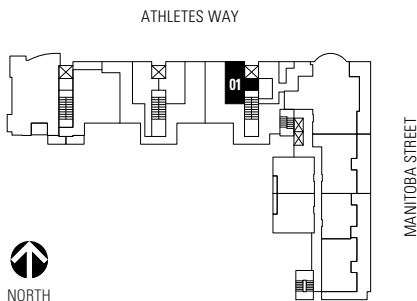
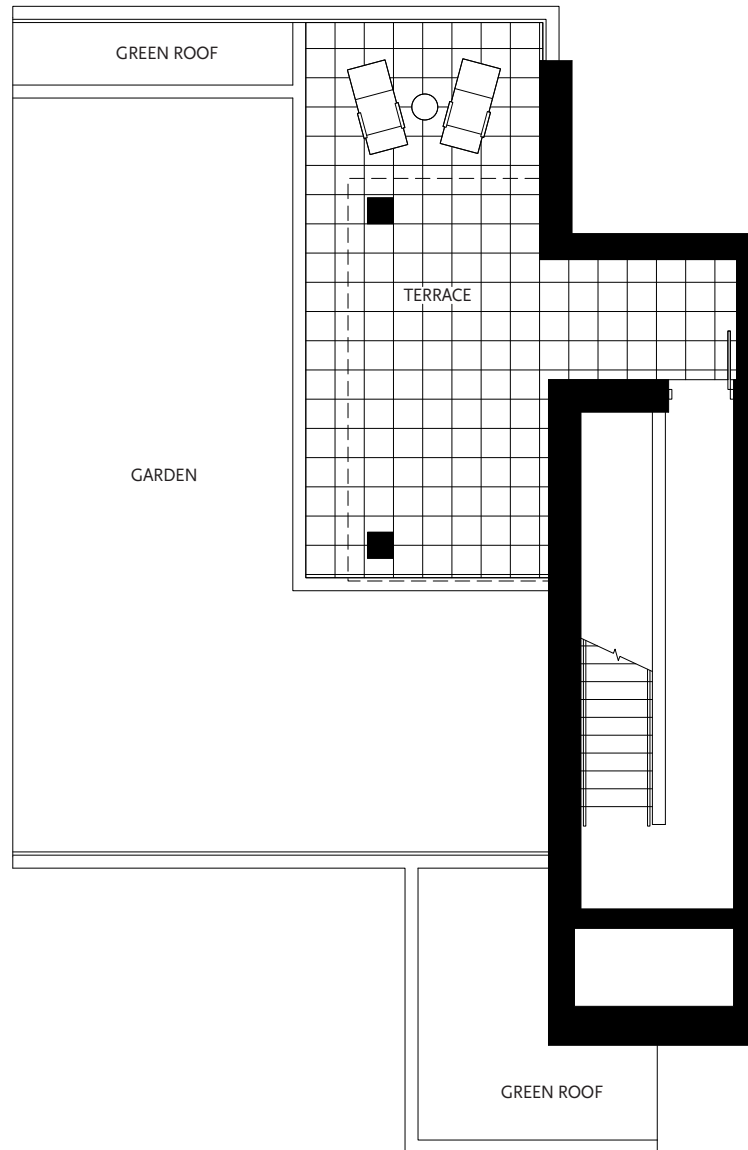


# MILLENNIUM WATER

VANCOUVER'S LAST WATERFRONT COMMUNITY

## PLAN T UPPER FLOOR

## 118 ATHLETES WAY



UNIT 601 – UPPER FLOOR

Washer/dryer are optional items. Dimensions, sizes, areas, specifications, layouts and materials are approximate only and subject to change without notice. Floorplates and unit numbers may vary between floors and appliance brands and sizes are subject to change. Please see a sales representative for more details. E.&O.E.

