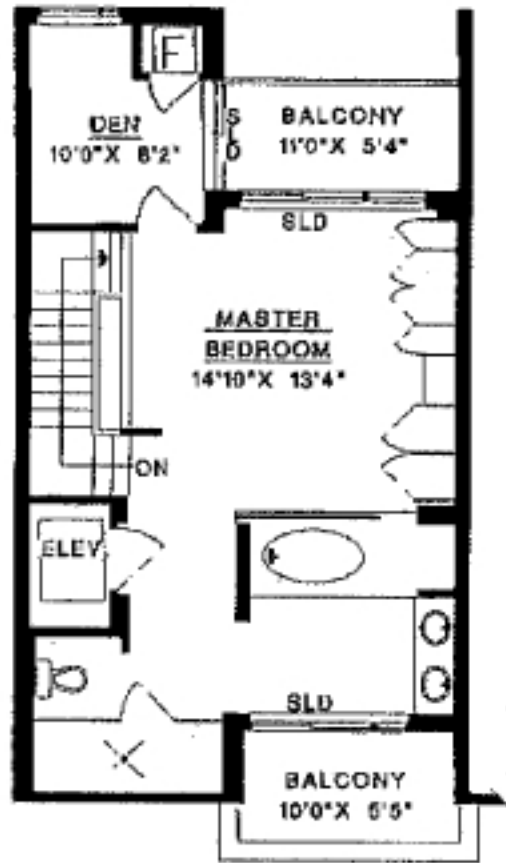
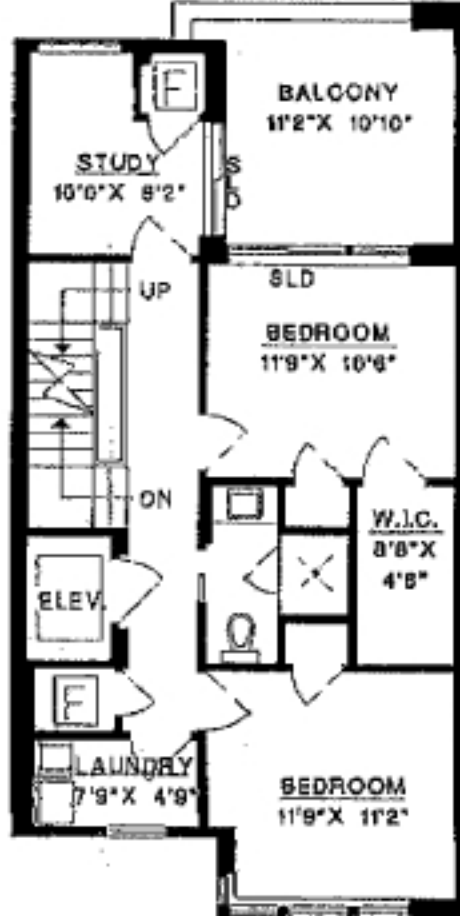


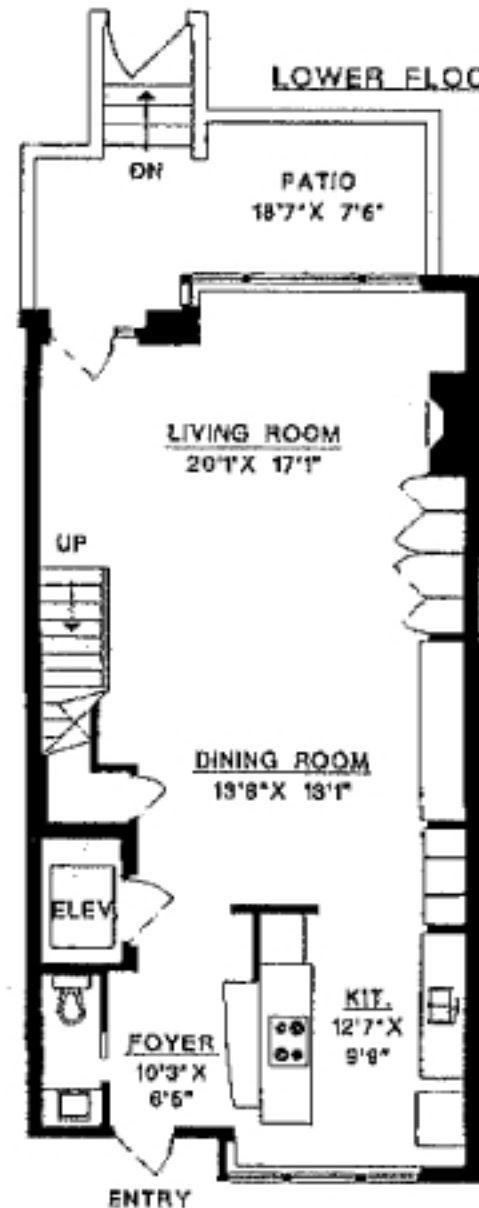
UPPER FLOOR



MAIN FLOOR



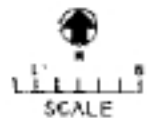
LOWER FLOOR

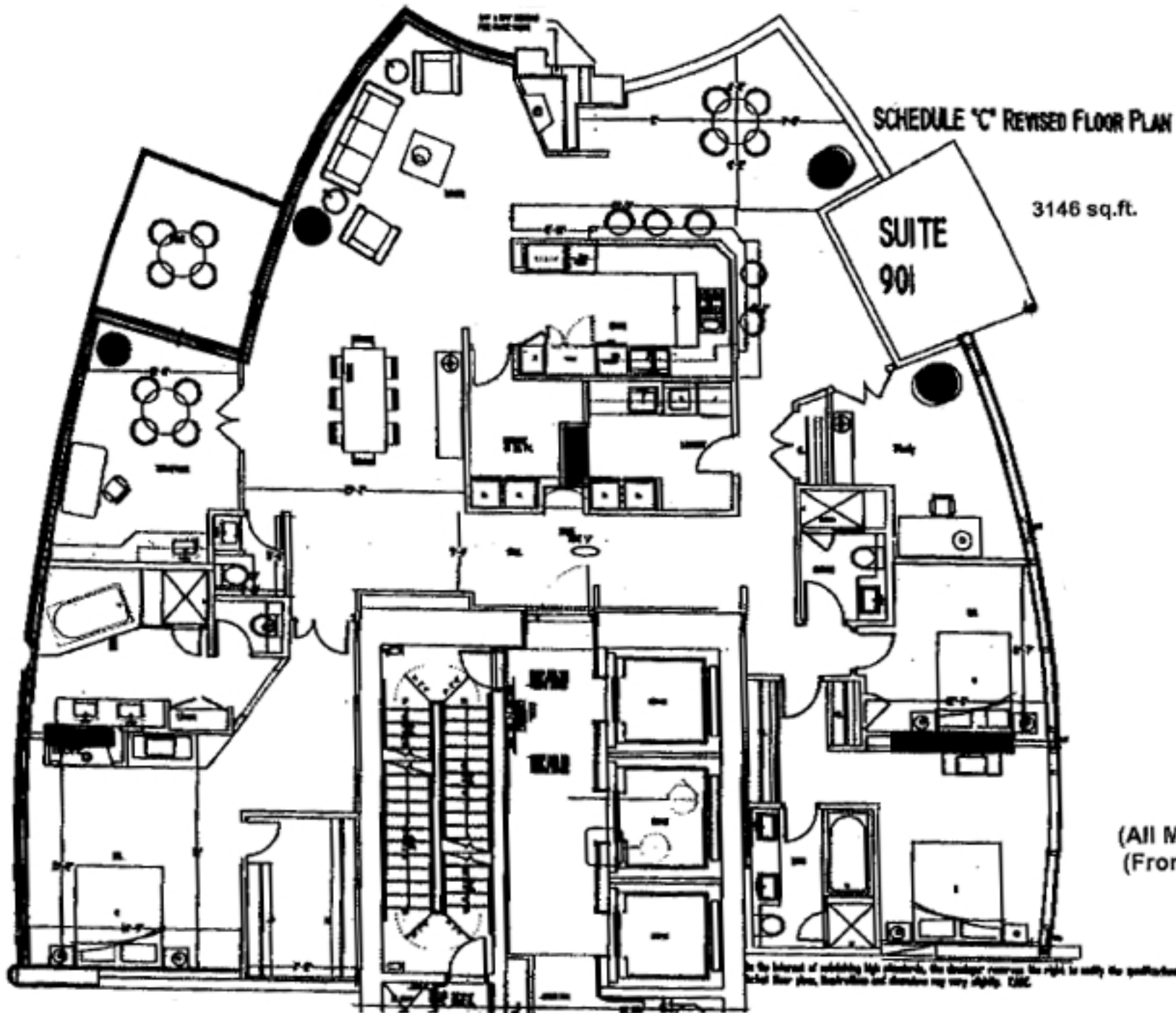


EXISTING RESIDENCE AT
 TH #20-1281 W. CORDOVA ST.
 VANCOUVER, B.C.

2,496 sq.ft.

(All Measurements Approx)
 (From Architectural Plans)





3146 sq.ft.

SCHEDULE 'C' REVISED FLOOR PLAN

SUITE
901

(All Measurements Approx)
(From Architectural Plans)

In the interest of adding life elements, the designer reserves the right to modify the specifications and design of the project without prior notice. All floor plans, illustrations and drawings may vary slightly. ©2002