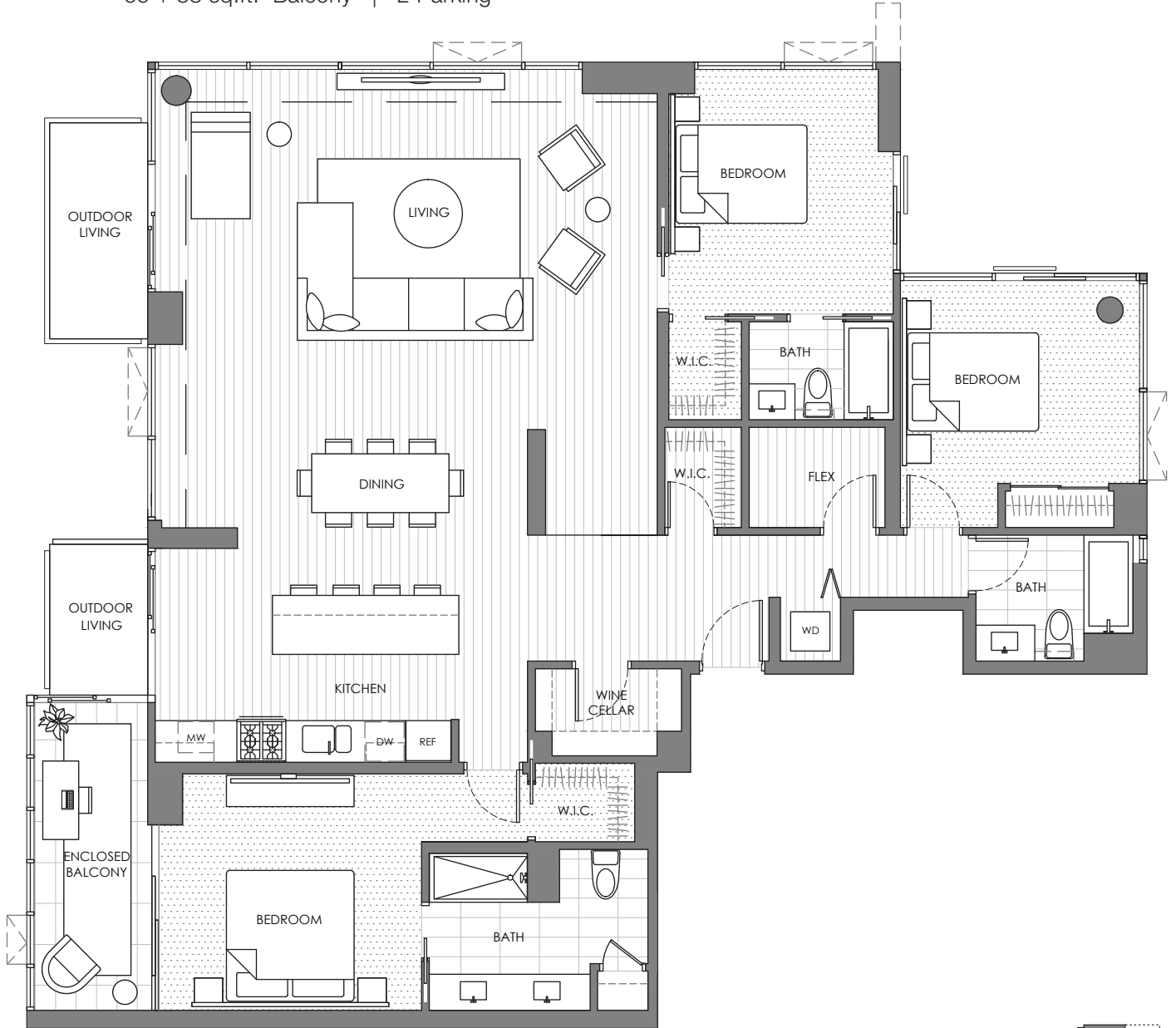




# FLOORPLAN PH1

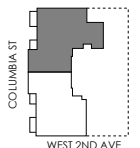
Private Collection Penthouse | 3 Bedroom + Den | 3 Bath | 1969 sq.ft. | Wine Cellar  
 55 + 38 sq.ft. Balcony | 2 Parking



\* Penthouse Collection with 8' 8" ceiling heights, upgraded Gas Wolf Range, Subzero Fridge & Remote UV rollershades

\*\* Note: Gas is seperately metered

\*\*\* Architectural feature varies - please consult a salesperson



LEVEL 18





# FLOORPLAN PH2

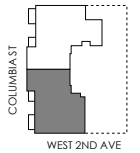
Private Collection Penthouse | 2 Bedroom + Den | 2 Bath | 1725 sq.ft. | Wine Cellar  
 35 + 55 sq.ft. Balcony | 2 Parking



\* Penthouse Collection with 8' 8" ceiling heights, upgraded Gas Wolf Range, Subzero Fridge & Remote UV rollershades

\*\* Note: Gas is seperately metered

\*\*\* Architectural feature varies - please consult a salesperson



LEVEL 18



121 West 2nd Avenue, Vancouver, B.C. 604.707.9378

EpicAtWest.com

The Developer reserves the right to change features and specifications without notice. All floorplans are approximate only and subject to change without notice. E&O.E.