



MILLENNIUM WATER

VANCOUVER'S LAST WATERFRONT COMMUNITY

PLAN J

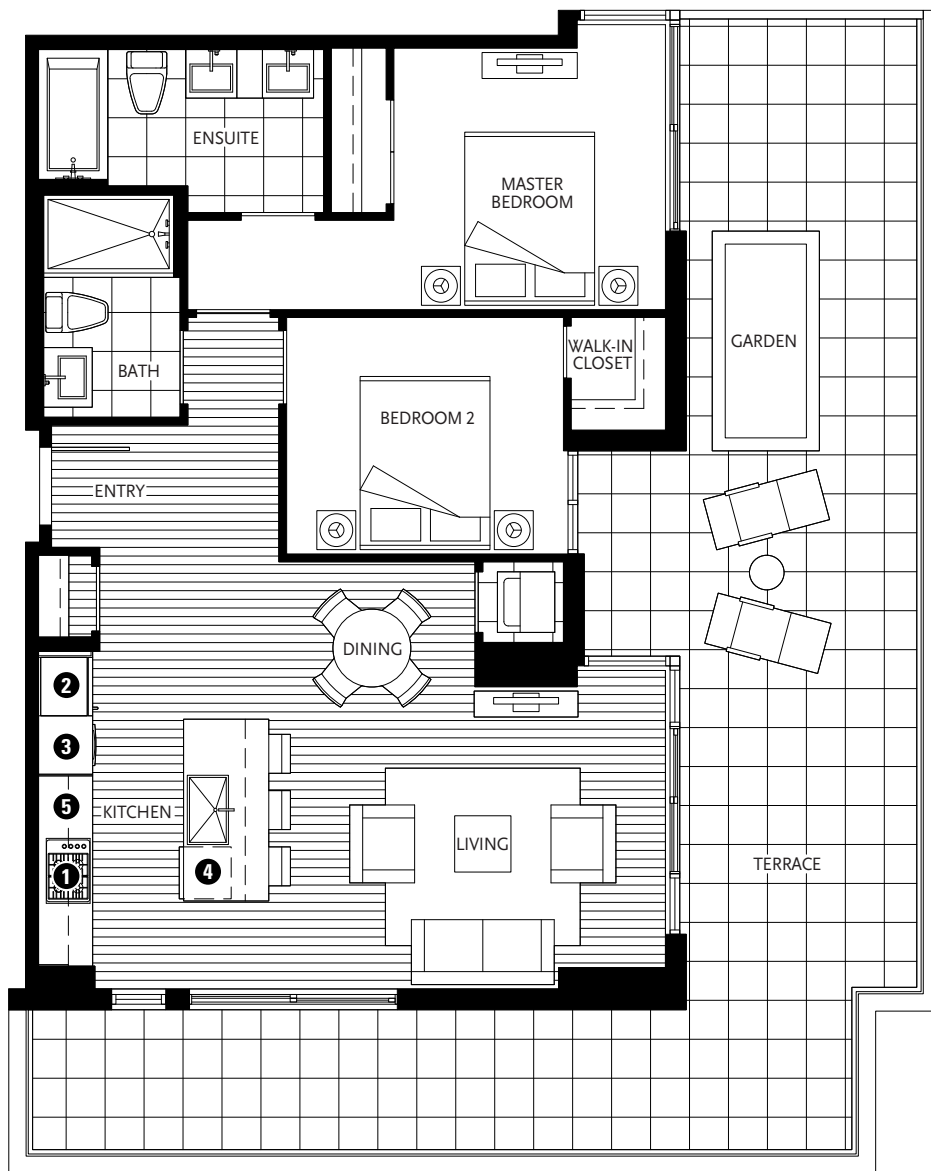
2 BEDROOM

901 SF LIVING

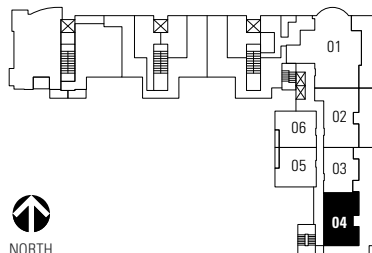
637 SF TERRACE

1625 MANITOBA STREET

- 1 Miele gas cooktop
- 2 Sub-Zero refrigerator
- 3 Miele wall oven & Panasonic built-in microwave
- 4 Miele dishwasher
- 5 Eggersmann of Germany eco-wood cabinetry



ATHLETES WAY



MANITOBA STREET



7TH FLOOR

Washer/dryer are optional items. Dimensions, sizes, areas, specifications, layouts and materials are approximate only and subject to change without notice. Floorplates and unit numbers may vary between floors and appliance brands and sizes are subject to change. Please see a sales representative for more details. E.&O.E.



RENNIE
MARKETING
SYSTEMS
GREEN