



MILLENNIUM WATER

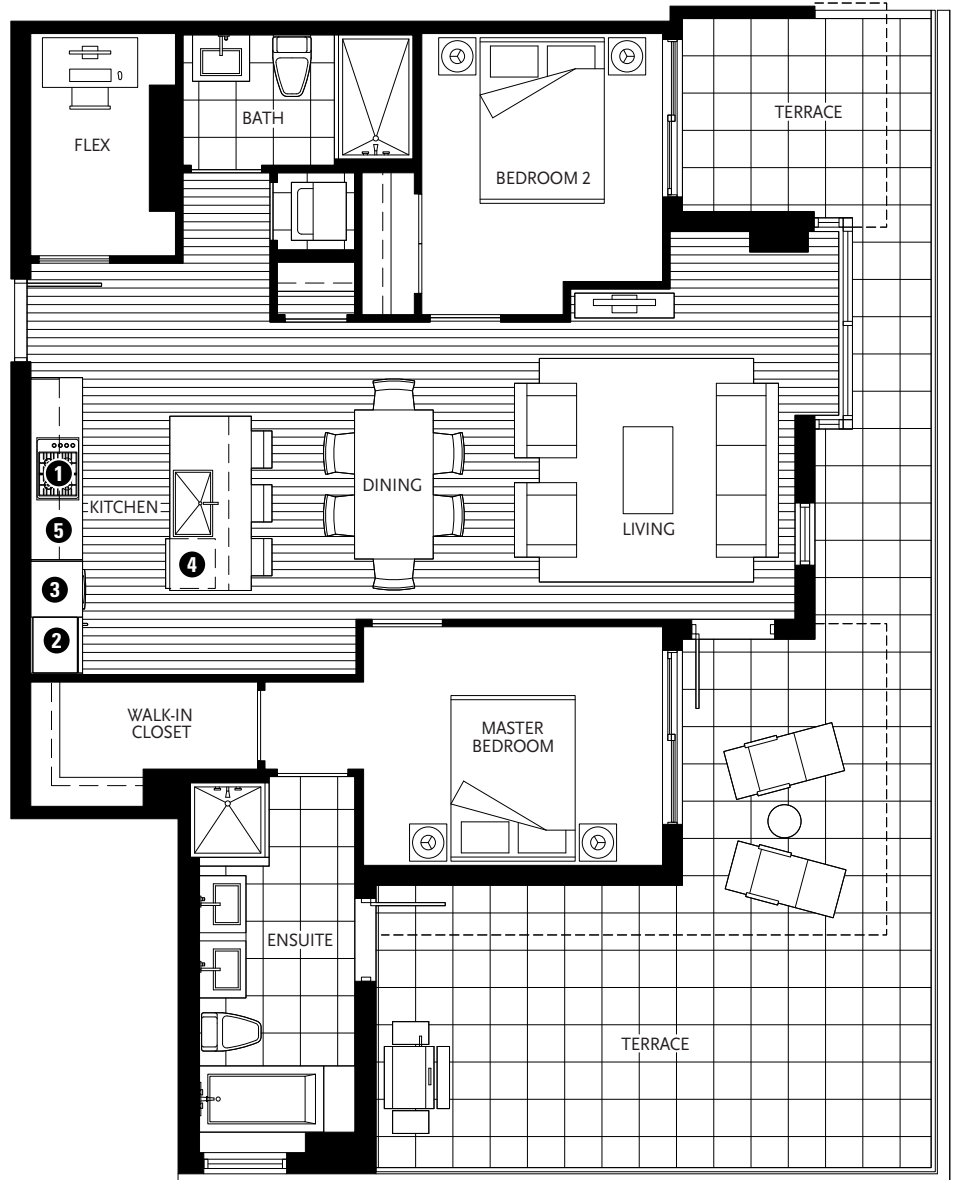
VANCOUVER'S LAST WATERFRONT COMMUNITY

PLAN M

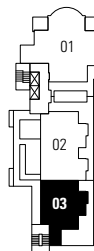
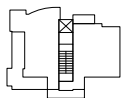
1625 MANITOBA STREET

2 BEDROOM + FLEX
1116 SF LIVING
537 SF TERRACE

- 1 Miele gas cooktop
- 2 Sub-Zero refrigerator
- 3 Miele wall oven & Panasonic built-in microwave
- 4 Miele dishwasher
- 5 Eggersmann of Germany eco-wood cabinetry



ATHLETES WAY



MANITOBA STREET



8TH FLOOR

Washer/dryer are optional items. Dimensions, sizes, areas, specifications, layouts and materials are approximate only and subject to change without notice. Floorplates and unit numbers may vary between floors and appliance brands and sizes are subject to change. Please see a sales representative for more details. E.&O.E.

