

VANCOUVER HOUSE



ARCHITECT SERIES

2611

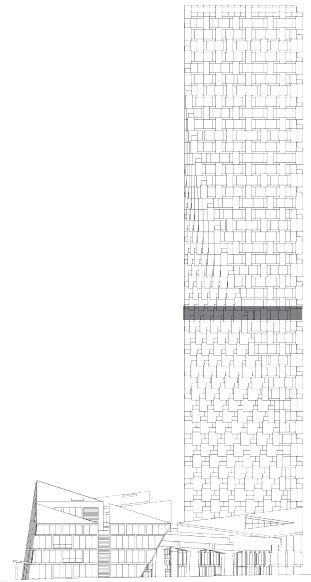
ONE BEDROOM FLEX

TOTAL LIVING 489 SF

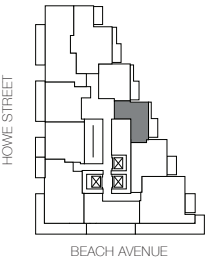
Indoor Living 415 sf

Outdoor Living 74 sf

Overlooking False Creek, this custom home features a terrace spanning its entire frontage. A structural wall delineates the kitchen and dining area from the flexible sleeping/living space, complete with a Murphy bed custom designed by BIG.



Floor 26



THERE ARE NO REPRESENTATIONS OR WARRANTIES HEREIN, MADE BY THE DEVELOPER, ITS AGENTS OR EMPLOYEES, OR ANY OTHER PERSON ON BEHALF OF THE DEVELOPER, OTHER THAN THOSE CONTAINED IN A CONTRACT OF PURCHASE AND SALE BETWEEN A PURCHASER AND THE DEVELOPER AND IN THE DISCLOSURE STATEMENT FOR THE DEVELOPMENT TO THE EXTENT MANDATED BY LAW. IN PARTICULAR, THE PURCHASER ACKNOWLEDGES AND AGREES THAT THE MATERIALS, SPECIFICATIONS, DETAILS, DIMENSIONS, LAYOUT AND FLOORPLANS SET OUT HEREIN OR OTHERWISE VIEWED BY THE PURCHASER ARE APPROXIMATE AND SUBJECT TO CHANGE WITHOUT NOTICE.

westbank

BIG

VANCOUVER HOUSE

ARCHITECT SERIES

2610



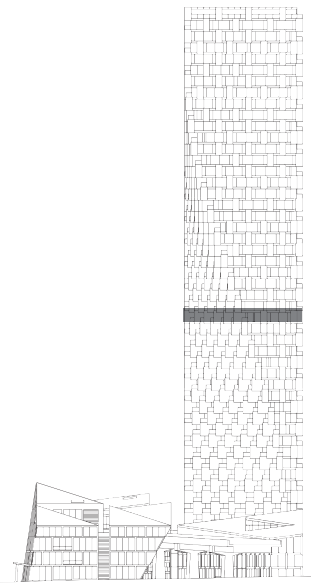
ONE BEDROOM

TOTAL LIVING 501 SF

Indoor Living 421 sf

Outdoor Living 80 sf

This home boasts a spectacular view upon entry and overlooks False Creek, with a terrace spanning its entire frontage. An open concept living and dining area is separated from the bedroom with an enhanced privacy wall.



Floor 26

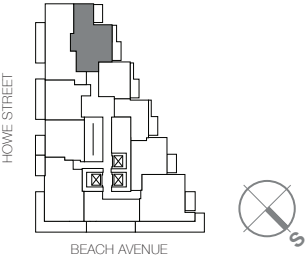


THERE ARE NO REPRESENTATIONS OR WARRANTIES HEREIN, MADE BY THE DEVELOPER, ITS AGENTS OR EMPLOYEES, OR ANY OTHER PERSON ON BEHALF OF THE DEVELOPER, OTHER THAN THOSE CONTAINED IN A CONTRACT OF PURCHASE AND SALE BETWEEN A PURCHASER AND THE DEVELOPER AND IN THE DISCLOSURE STATEMENT FOR THE DEVELOPMENT TO THE EXTENT MANDATED BY LAW. IN PARTICULAR, THE PURCHASER ACKNOWLEDGES AND AGREES THAT THE MATERIALS, SPECIFICATIONS, DETAILS, DIMENSIONS, LAYOUT AND FLOORPLANS SET OUT HEREIN OR OTHERWISE VIEWED BY THE PURCHASER ARE APPROXIMATE AND SUBJECT TO CHANGE WITHOUT NOTICE.

westbank

BIG

VANCOUVER HOUSE



THERE ARE NO REPRESENTATIONS OR WARRANTIES HEREIN, MADE BY THE DEVELOPER, ITS AGENTS OR EMPLOYEES, OR ANY OTHER PERSON ON BEHALF OF THE DEVELOPER, OTHER THAN THOSE CONTAINED IN A CONTRACT OF PURCHASE AND SALE BETWEEN A PURCHASER AND THE DEVELOPER AND IN THE DISCLOSURE STATEMENT FOR THE DEVELOPMENT TO THE EXTENT MANDATED BY LAW. IN PARTICULAR, THE PURCHASER ACKNOWLEDGES AND AGREES THAT THE MATERIALS, SPECIFICATIONS, DETAILS, DIMENSIONS, LAYOUT AND FLOORPLANS SET OUT HEREIN OR OTHERWISE VIEWED BY THE PURCHASER ARE APPROXIMATE AND SUBJECT TO CHANGE WITHOUT NOTICE.

ARCHITECT SERIES 2609

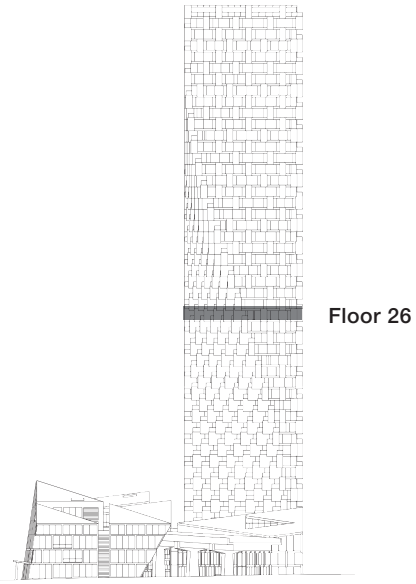
TWO BEDROOM

TOTAL LIVING 900 SF

Indoor Living 756 sf

Outdoor Living 144 sf

This corner home boasts a view that spans from downtown to False Creek, as well as two terraces to take in the sunrise. The two bedrooms are separated by a central living and dining area, and are each cocooned by soundproof structural walls. The bathroom is spacious with a soaker tub and walk-in shower.



westbank

BIG

VANCOUVER HOUSE

ARCHITECT SERIES 2608



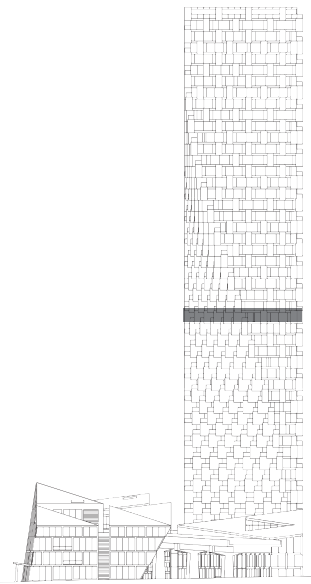
TWO BEDROOM

TOTAL LIVING 984 SF

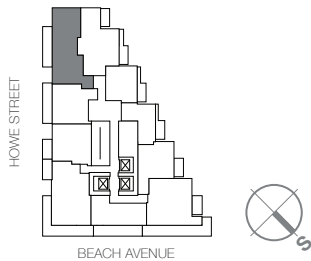
Indoor Living 858 sf

Outdoor Living 126 sf

With views of Stanley Park, English Bay and Point Grey, this corner home features an extensive amount of glazing and natural light. The living and dining areas share access to the linear kitchen and 20 foot long terrace. The master bedroom offers a walk-in closet and a spacious four-piece bathroom, along with a glittering view of downtown by night.



Floor 26



THERE ARE NO REPRESENTATIONS OR WARRANTIES HEREIN, MADE BY THE DEVELOPER, ITS AGENTS OR EMPLOYEES, OR ANY OTHER PERSON ON BEHALF OF THE DEVELOPER, OTHER THAN THOSE CONTAINED IN A CONTRACT OF PURCHASE AND SALE BETWEEN A PURCHASER AND THE DEVELOPER AND IN THE DISCLOSURE STATEMENT FOR THE DEVELOPMENT TO THE EXTENT MANDATED BY LAW. IN PARTICULAR, THE PURCHASER ACKNOWLEDGES AND AGREES THAT THE MATERIALS, SPECIFICATIONS, DETAILS, DIMENSIONS, LAYOUT AND FLOORPLANS SET OUT HEREIN OR OTHERWISE VIEWED BY THE PURCHASER ARE APPROXIMATE AND SUBJECT TO CHANGE WITHOUT NOTICE.

westbank

BIG

VANCOUVER HOUSE

ARCHITECT SERIES

2607



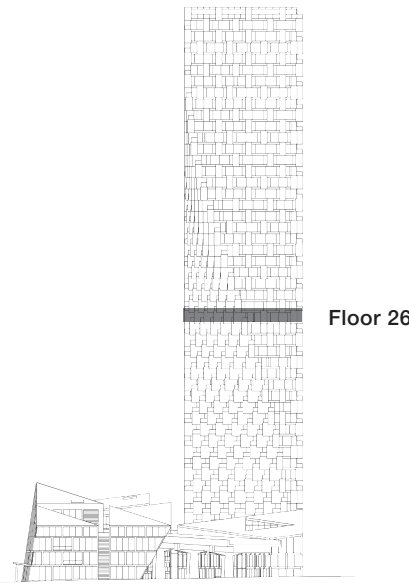
ONE BEDROOM

TOTAL LIVING 669 SF

Indoor Living 543 sf

Outdoor Living 126 sf

A linear terrace runs along the entire frontage of this custom home, offering views of English Bay and Point Grey, and an ideal setting for outdoor entertaining. The innovative interior design features a kitchen delineated from the open concept living and dining area, and a luxurious four-piece bathroom with soaker tub and shower.



Floor 26

westbank

BIG

THERE ARE NO REPRESENTATIONS OR WARRANTIES HEREIN, MADE BY THE DEVELOPER, ITS AGENTS OR EMPLOYEES, OR ANY OTHER PERSON ON BEHALF OF THE DEVELOPER, OTHER THAN THOSE CONTAINED IN A CONTRACT OF PURCHASE AND SALE BETWEEN A PURCHASER AND THE DEVELOPER AND IN THE DISCLOSURE STATEMENT FOR THE DEVELOPMENT TO THE EXTENT MANDATED BY LAW. IN PARTICULAR, THE PURCHASER ACKNOWLEDGES AND AGREES THAT THE MATERIALS, SPECIFICATIONS, DETAILS, DIMENSIONS, LAYOUT AND FLOORPLANS SET OUT HEREIN OR OTHERWISE VIEWED BY THE PURCHASER ARE APPROXIMATE AND SUBJECT TO CHANGE WITHOUT NOTICE.

VANCOUVER HOUSE

ARCHITECT SERIES 2606



THERE ARE NO REPRESENTATIONS OR WARRANTIES HEREIN, MADE BY THE DEVELOPER, ITS AGENTS OR EMPLOYEES, OR ANY OTHER PERSON ON BEHALF OF THE DEVELOPER, OTHER THAN THOSE CONTAINED IN A CONTRACT OF PURCHASE AND SALE BETWEEN A PURCHASER AND THE DEVELOPER AND IN THE DISCLOSURE STATEMENT FOR THE DEVELOPMENT TO THE EXTENT MANDATED BY LAW. IN PARTICULAR, THE PURCHASER ACKNOWLEDGES AND AGREES THAT THE MATERIALS, SPECIFICATIONS, DETAILS, DIMENSIONS, LAYOUT AND FLOORPLANS SET OUT HEREIN OR OTHERWISE VIEWED BY THE PURCHASER ARE APPROXIMATE AND SUBJECT TO CHANGE WITHOUT NOTICE.

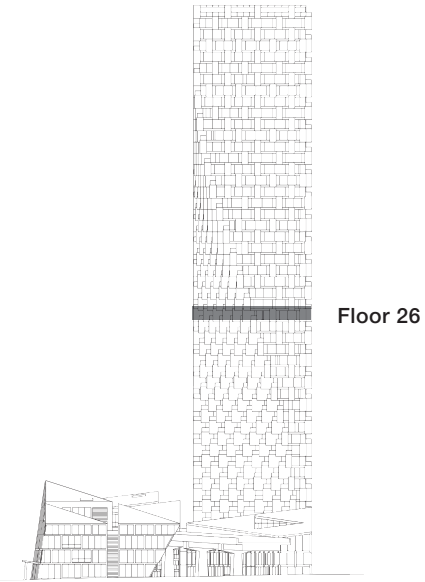
ONE BEDROOM

TOTAL LIVING 596 SF

Indoor Living 533 sf

Outdoor Living 63 sf

With floor-to-ceiling windows along its entire frontage, this custom home offers views of English Bay and Point Grey from its west-facing terrace. The interior features a linear kitchen, an open concept living and dining area, and a four-piece bathroom with soaker tub and shower.



westbank

BIG

VANCOUVER HOUSE

ARCHITECT SERIES 2605



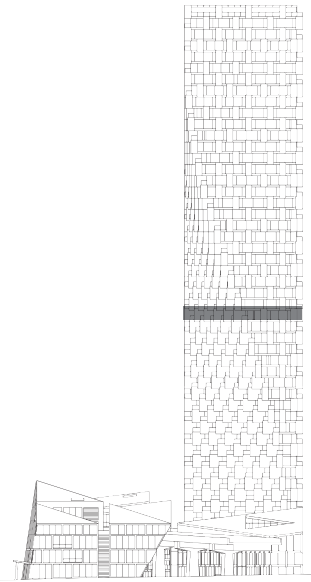
TWO BEDROOM

TOTAL LIVING 1188 SF

Indoor Living 852 sf

Outdoor Living 336 sf

Two enormous decks with views that span from Granville Island and False Creek to English Bay comprise a third of this home's total living space, wrapping around a central living area with separated bedrooms. The kitchen boasts a panoramic vista revealing English Bay, and the master bedroom offers not only an ensuite with soaker tub and spacious shower but also direct balcony access, perfect for sunset viewing.



Floor 26



THERE ARE NO REPRESENTATIONS OR WARRANTIES HEREIN, MADE BY THE DEVELOPER, ITS AGENTS OR EMPLOYEES, OR ANY OTHER PERSON ON BEHALF OF THE DEVELOPER, OTHER THAN THOSE CONTAINED IN A CONTRACT OF PURCHASE AND SALE BETWEEN A PURCHASER AND THE DEVELOPER AND IN THE DISCLOSURE STATEMENT FOR THE DEVELOPMENT TO THE EXTENT MANDATED BY LAW. IN PARTICULAR, THE PURCHASER ACKNOWLEDGES AND AGREES THAT THE MATERIALS, SPECIFICATIONS, DETAILS, DIMENSIONS, LAYOUT AND FLOORPLANS SET OUT HEREIN OR OTHERWISE VIEWED BY THE PURCHASER ARE APPROXIMATE AND SUBJECT TO CHANGE WITHOUT NOTICE.

westbank

BIG

VANCOUVER HOUSE

ARCHITECT SERIES 2603



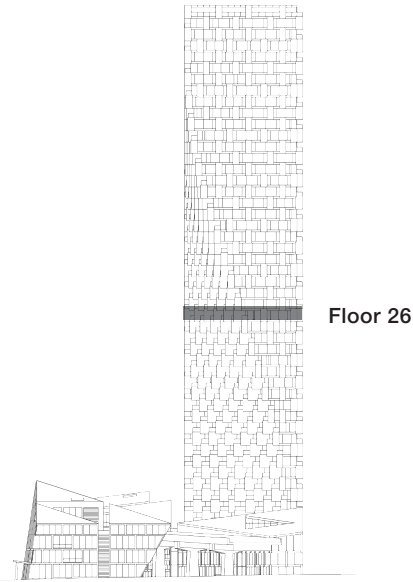
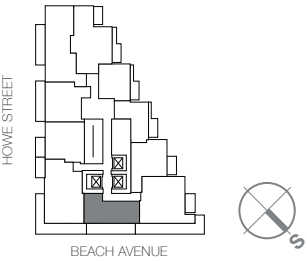
ONE BEDROOM

TOTAL LIVING 684 SF

Indoor Living 513 sf

Outdoor Living 171 sf

This custom home features a large southwest-facing terrace with views of Granville Island and False Creek, ideal for indoor and outdoor living. The interior features a linear kitchen, an open concept living and dining area, a bedroom with walk-in closet, and a bathroom with soaker tub and spacious shower.



westbank

BIG

THERE ARE NO REPRESENTATIONS OR WARRANTIES HEREIN, MADE BY THE DEVELOPER, ITS AGENTS OR EMPLOYEES, OR ANY OTHER PERSON ON BEHALF OF THE DEVELOPER, OTHER THAN THOSE CONTAINED IN A CONTRACT OF PURCHASE AND SALE BETWEEN A PURCHASER AND THE DEVELOPER AND IN THE DISCLOSURE STATEMENT FOR THE DEVELOPMENT TO THE EXTENT MANDATED BY LAW. IN PARTICULAR, THE PURCHASER ACKNOWLEDGES AND AGREES THAT THE MATERIALS, SPECIFICATIONS, DETAILS, DIMENSIONS, LAYOUT AND FLOORPLANS SET OUT HEREIN OR OTHERWISE VIEWED BY THE PURCHASER ARE APPROXIMATE AND SUBJECT TO CHANGE WITHOUT NOTICE.

VANCOUVER HOUSE

ARCHITECT SERIES 2602

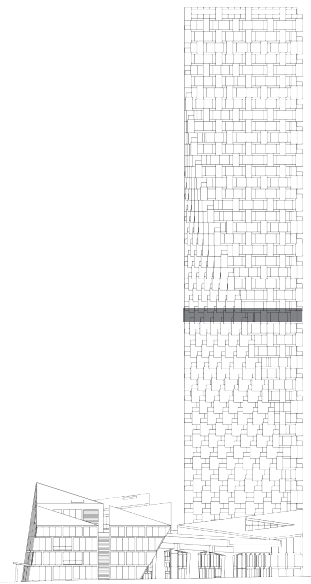
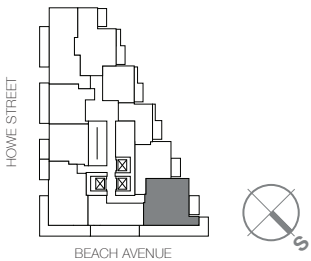
TWO BEDROOM & ATELIER

TOTAL LIVING 1149 SF

Indoor Living 803 sf

Outdoor Living 346 sf

This custom home features three distinct views overlooking False Creek, Granville Island and Point Grey. Form follows function with flair, as the kitchen, living and dining area in the centre separates the two bedrooms on opposite ends. The master bedroom features an ensuite with soaker tub and spacious shower. Off the dining area, a glassed in atelier with views of False Creek provides the perfect office space.



Floor 26

westbank

BIG

THERE ARE NO REPRESENTATIONS OR WARRANTIES HEREIN, MADE BY THE DEVELOPER, ITS AGENTS OR EMPLOYEES, OR ANY OTHER PERSON ON BEHALF OF THE DEVELOPER, OTHER THAN THOSE CONTAINED IN A CONTRACT OF PURCHASE AND SALE BETWEEN A PURCHASER AND THE DEVELOPER AND IN THE DISCLOSURE STATEMENT FOR THE DEVELOPMENT TO THE EXTENT MANDATED BY LAW. IN PARTICULAR, THE PURCHASER ACKNOWLEDGES AND AGREES THAT THE MATERIALS, SPECIFICATIONS, DETAILS, DIMENSIONS, LAYOUT AND FLOORPLANS SET OUT HEREIN OR OTHERWISE VIEWED BY THE PURCHASER ARE APPROXIMATE AND SUBJECT TO CHANGE WITHOUT NOTICE.

VANCOUVER HOUSE



ARCHITECT SERIES 2601

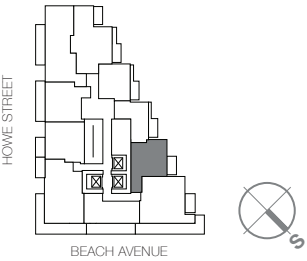
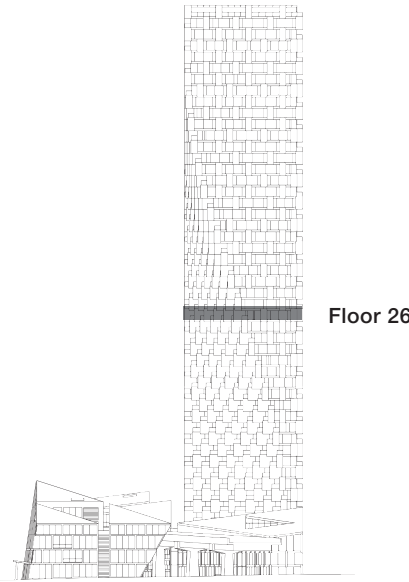
ONE BEDROOM

TOTAL LIVING 651 SF

Indoor Living 583 sf

Outdoor Living 68 sf

This custom home boasts a lovely view of David Lam Park and False Creek, with a terrace accessible from all living areas spanning its entire front-age. An open concept living and dining area is delineated from a generous master suite, sequestered for privacy, complete with an ensuite bathroom with soaker tub and spacious shower.



THERE ARE NO REPRESENTATIONS OR WARRANTIES HEREIN, MADE BY THE DEVELOPER, ITS AGENTS OR EMPLOYEES, OR ANY OTHER PERSON ON BEHALF OF THE DEVELOPER, OTHER THAN THOSE CONTAINED IN A CONTRACT OF PURCHASE AND SALE BETWEEN A PURCHASER AND THE DEVELOPER AND IN THE DISCLOSURE STATEMENT FOR THE DEVELOPMENT TO THE EXTENT MANDATED BY LAW. IN PARTICULAR, THE PURCHASER ACKNOWLEDGES AND AGREES THAT THE MATERIALS, SPECIFICATIONS, DETAILS, DIMENSIONS, LAYOUT AND FLOORPLANS SET OUT HEREIN OR OTHERWISE VIEWED BY THE PURCHASER ARE APPROXIMATE AND SUBJECT TO CHANGE WITHOUT NOTICE.

westbank

BIG

VANCOUVER HOUSE

ARCHITECT SERIES

4512



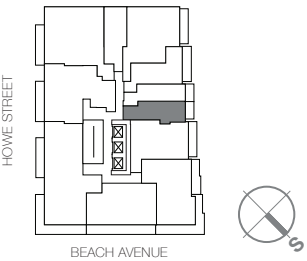
ONE BEDROOM FLEX

TOTAL LIVING 469 SF

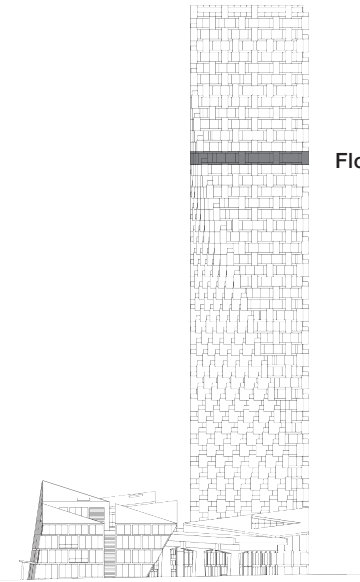
Indoor Living 415 sf

Outdoor Living 54 sf

This home with terrace boasts a bird's eye view of False Creek and an open concept, featuring a streamlined kitchen, four-piece bathroom and a flex space for living or sleeping, complete with a Murphy bed custom designed by BIG.



THERE ARE NO REPRESENTATIONS OR WARRANTIES HEREIN, MADE BY THE DEVELOPER, ITS AGENTS OR EMPLOYEES, OR ANY OTHER PERSON ON BEHALF OF THE DEVELOPER, OTHER THAN THOSE CONTAINED IN A CONTRACT OF PURCHASE AND SALE BETWEEN A PURCHASER AND THE DEVELOPER AND IN THE DISCLOSURE STATEMENT FOR THE DEVELOPMENT TO THE EXTENT MANDATED BY LAW. IN PARTICULAR, THE PURCHASER ACKNOWLEDGES AND AGREES THAT THE MATERIALS, SPECIFICATIONS, DETAILS, DIMENSIONS, LAYOUT AND FLOORPLANS SET OUT HEREIN OR OTHERWISE VIEWED BY THE PURCHASER ARE APPROXIMATE AND SUBJECT TO CHANGE WITHOUT NOTICE.



Floor 45

westbank

BIG

VANCOUVER HOUSE

ARCHITECT SERIES

4511

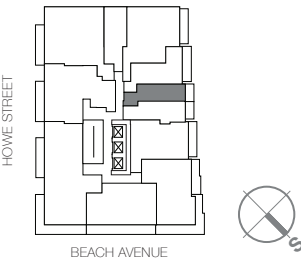
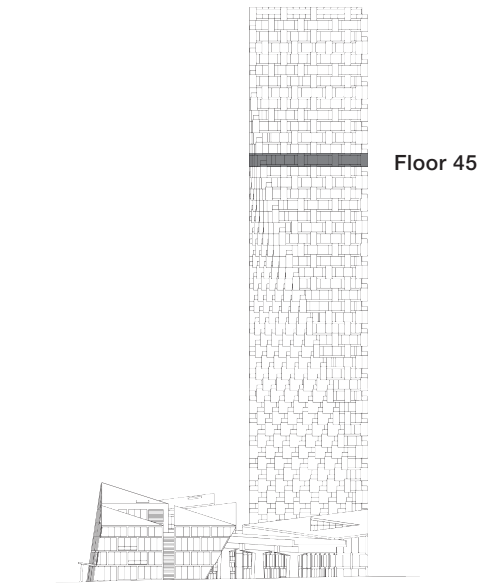
ONE BEDROOM FLEX

TOTAL LIVING 431 SF

Indoor Living 368 sf

Outdoor Living 63 sf

This home with terrace boasts a bird's eye view of False Creek and features a streamlined kitchen and dining area separated from a flex space for living or sleeping, and a Murphy bed custom designed by BIG.

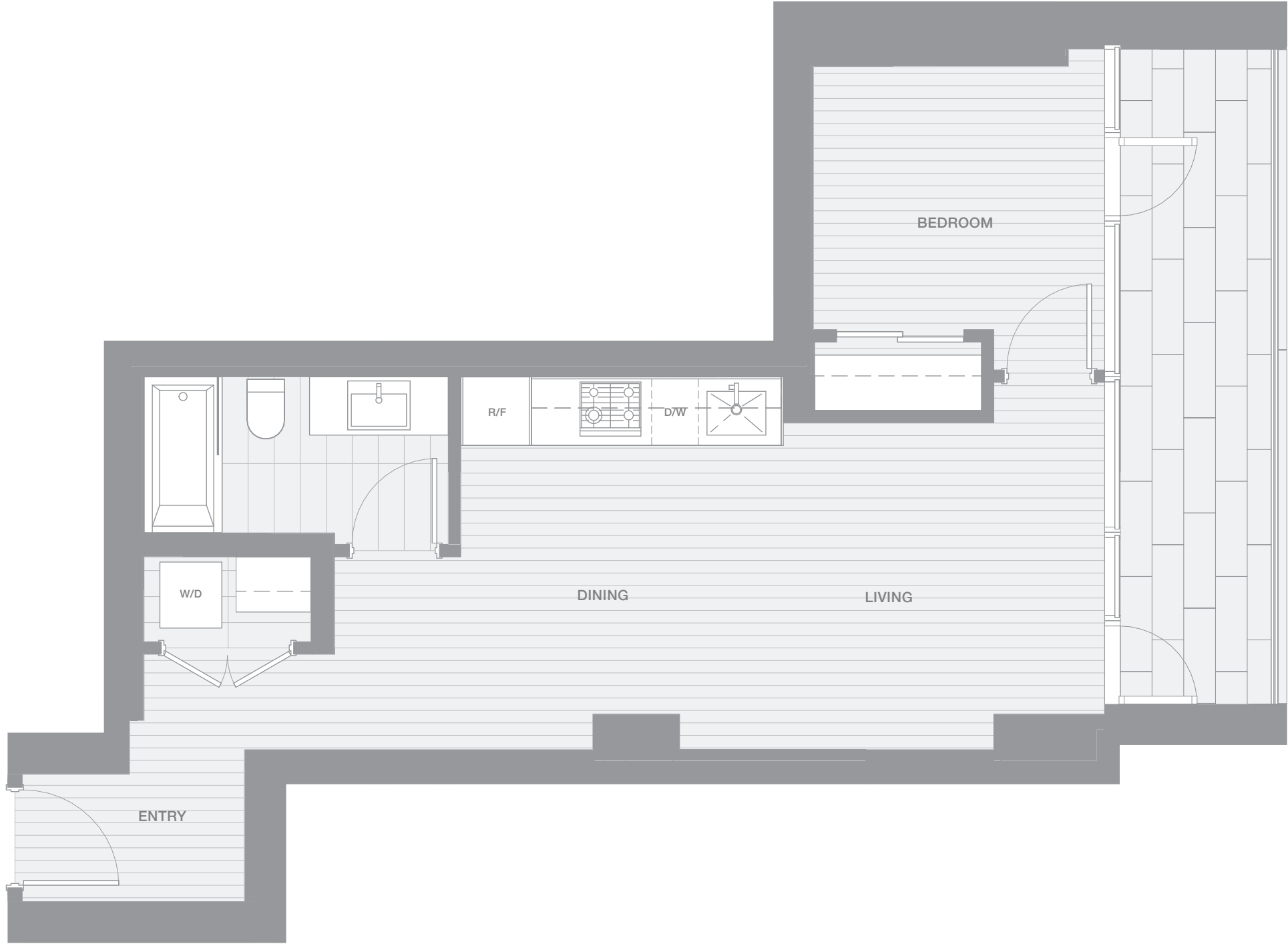


THERE ARE NO REPRESENTATIONS OR WARRANTIES HEREIN, MADE BY THE DEVELOPER, ITS AGENTS OR EMPLOYEES, OR ANY OTHER PERSON ON BEHALF OF THE DEVELOPER, OTHER THAN THOSE CONTAINED IN A CONTRACT OF PURCHASE AND SALE BETWEEN A PURCHASER AND THE DEVELOPER AND IN THE DISCLOSURE STATEMENT FOR THE DEVELOPMENT TO THE EXTENT MANDATED BY LAW. IN PARTICULAR, THE PURCHASER ACKNOWLEDGES AND AGREES THAT THE MATERIALS, SPECIFICATIONS, DETAILS, DIMENSIONS, LAYOUT AND FLOORPLANS SET OUT HEREIN OR OTHERWISE VIEWED BY THE PURCHASER ARE APPROXIMATE AND SUBJECT TO CHANGE WITHOUT NOTICE.

VANCOUVER HOUSE

ARCHITECT SERIES

4510



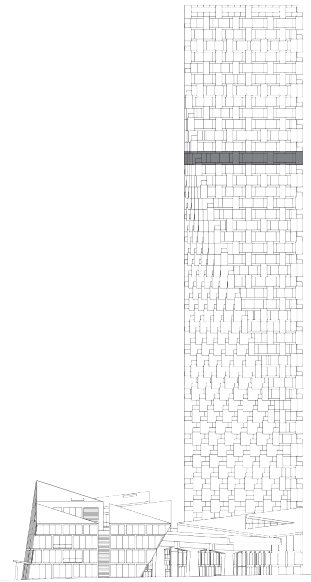
ONE BEDROOM

TOTAL LIVING 650 SF

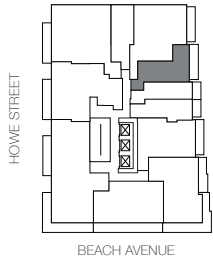
Indoor Living 533 sf

Outdoor Living 117 sf

This custom home overlooking False Creek features an expansive terrace spanning its entire frontage. The open concept interior offers a harmonious sense of flow. The bedroom and living area both open up to the terrace, epitomizing an ideal indoor/outdoor aesthetic.



Floor 45



THERE ARE NO REPRESENTATIONS OR WARRANTIES HEREIN, MADE BY THE DEVELOPER, ITS AGENTS OR EMPLOYEES, OR ANY OTHER PERSON ON BEHALF OF THE DEVELOPER, OTHER THAN THOSE CONTAINED IN A CONTRACT OF PURCHASE AND SALE BETWEEN A PURCHASER AND THE DEVELOPER AND IN THE DISCLOSURE STATEMENT FOR THE DEVELOPMENT TO THE EXTENT MANDATED BY LAW. IN PARTICULAR, THE PURCHASER ACKNOWLEDGES AND AGREES THAT THE MATERIALS, SPECIFICATIONS, DETAILS, DIMENSIONS, LAYOUT AND FLOORPLANS SET OUT HEREIN OR OTHERWISE VIEWED BY THE PURCHASER ARE APPROXIMATE AND SUBJECT TO CHANGE WITHOUT NOTICE.

westbank

BIG

VANCOUVER HOUSE

ARCHITECT SERIES

4509

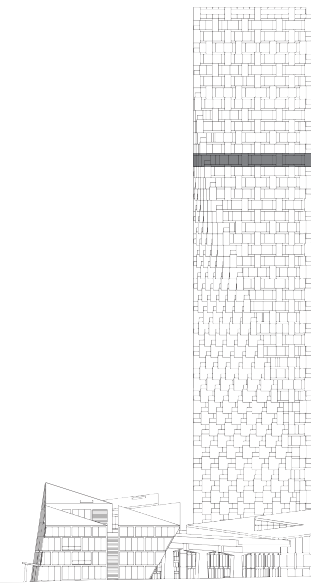
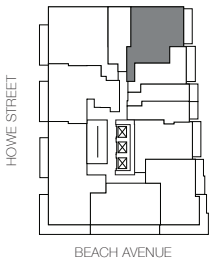
TWO BEDROOM

TOTAL LIVING 1163 SF

Indoor Living 1046 sf

Outdoor Living 117 sf

This corner home offers views of both downtown and False Creek. The interior features a kitchen with centre island, as well as an open concept living and dining area and a master bedroom that both open onto the terrace. The spacious master bedroom boasts a walk-in dressing room and a four-piece ensuite with soaker tub and shower.



Floor 45

westbank

BIG

THERE ARE NO REPRESENTATIONS OR WARRANTIES HEREIN, MADE BY THE DEVELOPER, ITS AGENTS OR EMPLOYEES, OR ANY OTHER PERSON ON BEHALF OF THE DEVELOPER, OTHER THAN THOSE CONTAINED IN A CONTRACT OF PURCHASE AND SALE BETWEEN A PURCHASER AND THE DEVELOPER AND IN THE DISCLOSURE STATEMENT FOR THE DEVELOPMENT TO THE EXTENT MANDATED BY LAW. IN PARTICULAR, THE PURCHASER ACKNOWLEDGES AND AGREES THAT THE MATERIALS, SPECIFICATIONS, DETAILS, DIMENSIONS, LAYOUT AND FLOORPLANS SET OUT HEREIN OR OTHERWISE VIEWED BY THE PURCHASER ARE APPROXIMATE AND SUBJECT TO CHANGE WITHOUT NOTICE.

VANCOUVER HOUSE

ARCHITECT SERIES 4508

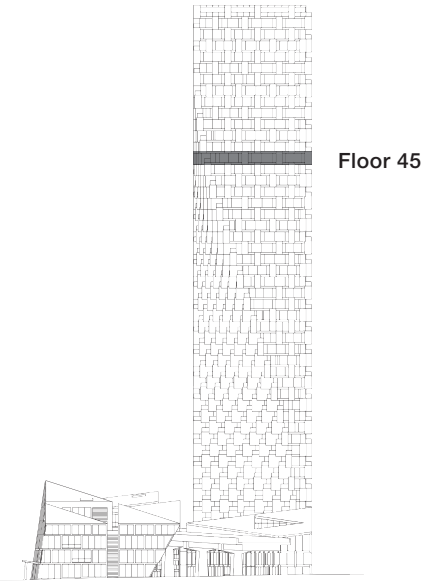
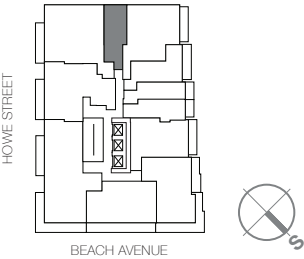


STUDIO

TOTAL LIVING 433 SF

Indoor Living 433 sf

This urban studio boasts a bird's eye view of downtown and an open concept, featuring a streamlined kitchen and a flex space for living or sleeping complete with a Murphy bed custom designed by BIG.



westbank

BIG

THERE ARE NO REPRESENTATIONS OR WARRANTIES HEREIN, MADE BY THE DEVELOPER, ITS AGENTS OR EMPLOYEES, OR ANY OTHER PERSON ON BEHALF OF THE DEVELOPER, OTHER THAN THOSE CONTAINED IN A CONTRACT OF PURCHASE AND SALE BETWEEN A PURCHASER AND THE DEVELOPER AND IN THE DISCLOSURE STATEMENT FOR THE DEVELOPMENT TO THE EXTENT MANDATED BY LAW. IN PARTICULAR, THE PURCHASER ACKNOWLEDGES AND AGREES THAT THE MATERIALS, SPECIFICATIONS, DETAILS, DIMENSIONS, LAYOUT AND FLOORPLANS SET OUT HEREIN OR OTHERWISE VIEWED BY THE PURCHASER ARE APPROXIMATE AND SUBJECT TO CHANGE WITHOUT NOTICE.

VANCOUVER HOUSE

ARCHITECT SERIES

4507

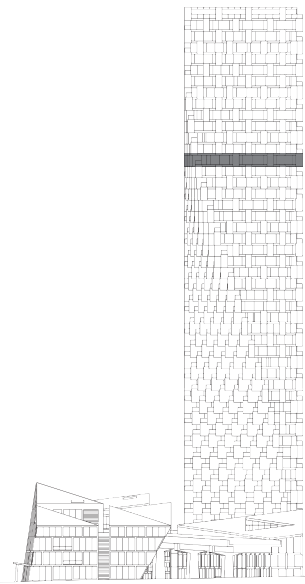
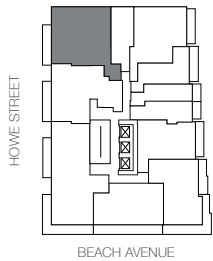
TWO BEDROOM & FAMILY

TOTAL LIVING 1459 SF

Indoor Living 1333 sf

Outdoor Living 126 sf

This corner home boasts over 65 linear feet of floor-to-ceiling glazing capturing views from English Bay to the city skyline and the North Shore Mountains. The interior offers an open concept living and dining area, a kitchen with large island and a family room. The master bedroom has direct access to the terrace, as well as a spacious dressing room and a five-piece ensuite.



Floor 45

westbank

BIG

THERE ARE NO REPRESENTATIONS OR WARRANTIES HEREIN, MADE BY THE DEVELOPER, ITS AGENTS OR EMPLOYEES, OR ANY OTHER PERSON ON BEHALF OF THE DEVELOPER, OTHER THAN THOSE CONTAINED IN A CONTRACT OF PURCHASE AND SALE BETWEEN A PURCHASER AND THE DEVELOPER AND IN THE DISCLOSURE STATEMENT FOR THE DEVELOPMENT TO THE EXTENT MANDATED BY LAW. IN PARTICULAR, THE PURCHASER ACKNOWLEDGES AND AGREES THAT THE MATERIALS, SPECIFICATIONS, DETAILS, DIMENSIONS, LAYOUT AND FLOORPLANS SET OUT HEREIN OR OTHERWISE VIEWED BY THE PURCHASER ARE APPROXIMATE AND SUBJECT TO CHANGE WITHOUT NOTICE.

VANCOUVER HOUSE

ARCHITECT SERIES 4506

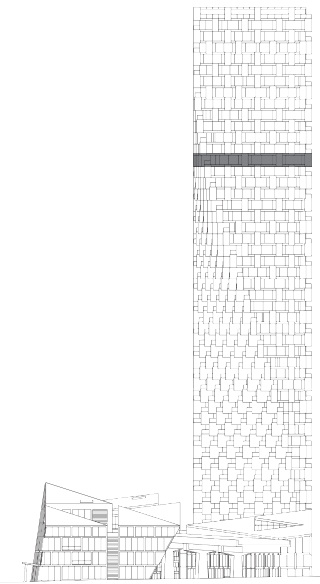
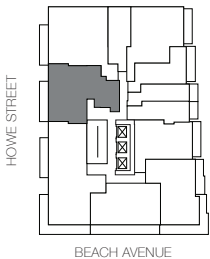
TWO BEDROOM & FAMILY

TOTAL LIVING 1290 SF

Indoor Living 1164 sf

Outdoor Living 126 sf

A generous terrace along the frontage of this custom home offers views of English Bay and Stanley Park. The indoor living space is clearly delineated with a living and dining area for formal entertaining, and a recessed kitchen and family room. The master bedroom features a large dressing room and a five-piece ensuite with double sinks, as well as a walk-in shower and soaker tub.



Floor 45

westbank

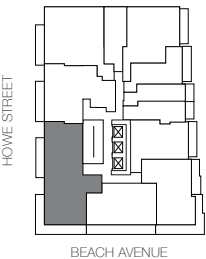
BIG

THERE ARE NO REPRESENTATIONS OR WARRANTIES HEREIN, MADE BY THE DEVELOPER, ITS AGENTS OR EMPLOYEES, OR ANY OTHER PERSON ON BEHALF OF THE DEVELOPER, OTHER THAN THOSE CONTAINED IN A CONTRACT OF PURCHASE AND SALE BETWEEN A PURCHASER AND THE DEVELOPER AND IN THE DISCLOSURE STATEMENT FOR THE DEVELOPMENT TO THE EXTENT MANDATED BY LAW. IN PARTICULAR, THE PURCHASER ACKNOWLEDGES AND AGREES THAT THE MATERIALS, SPECIFICATIONS, DETAILS, DIMENSIONS, LAYOUT AND FLOORPLANS SET OUT HEREIN OR OTHERWISE VIEWED BY THE PURCHASER ARE APPROXIMATE AND SUBJECT TO CHANGE WITHOUT NOTICE.

VANCOUVER
HOUSE

ARCHITECT
SERIES

4505



THERE ARE NO REPRESENTATIONS OR WARRANTIES HEREIN, MADE BY THE DEVELOPER, ITS AGENTS OR EMPLOYEES, OR ANY OTHER PERSON ON BEHALF OF THE DEVELOPER, OTHER THAN THOSE CONTAINED IN A CONTRACT OF PURCHASE AND SALE BETWEEN A PURCHASER AND THE DEVELOPER AND IN THE DISCLOSURE STATEMENT FOR THE DEVELOPMENT TO THE EXTENT MANDATED BY LAW. IN PARTICULAR, THE PURCHASER ACKNOWLEDGES AND AGREES THAT THE MATERIALS, SPECIFICATIONS, DETAILS, DIMENSIONS, LAYOUT AND FLOORPLANS SET OUT HEREIN OR OTHERWISE VIEWED BY THE PURCHASER ARE APPROXIMATE AND SUBJECT TO CHANGE WITHOUT NOTICE.

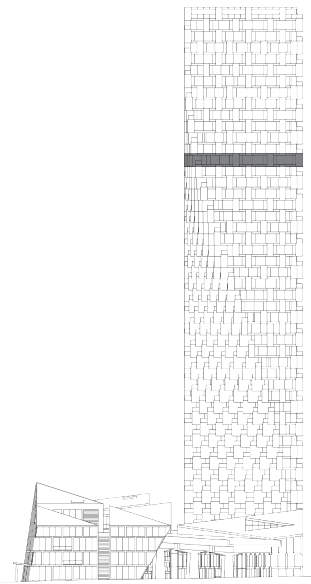
THREE BEDROOM & FAMILY

TOTAL LIVING 1982 SF

Indoor Living 1583 sf

Outdoor Living 399 sf

A large wrap around terrace spans this generous three-bedroom home, providing a 180-degree view from False Creek to English Bay and epitomizing the indoor/outdoor aesthetic. Nearly 2000 square feet of total living area with an open concept living and dining area, a fully-equipped presentation kitchen, and bedrooms in a private wing make this the jewel in the crown of the Architect Series.



Floor 45

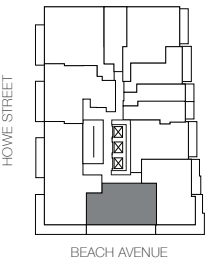
westbank

BIG

VANCOUVER HOUSE

ARCHITECT SERIES

4503



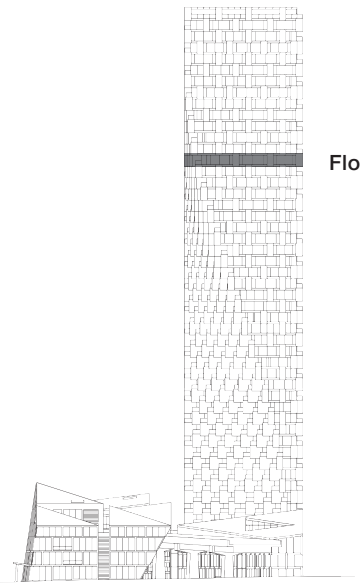
TWO BEDROOM

TOTAL LIVING 1232 SF

Indoor Living 990 sf

Outdoor Living 242 sf

A generous terrace spans this custom home's entire frontage providing direct access to outdoor space from all rooms. A captivating view of Granville Island and False Creek is revealed with over 40 feet of floor-to-ceiling glazing. Two bedrooms, including a master with a large dressing room and a four-piece ensuite, are separated by a central living and dining area, and a chef's kitchen that is perfect for entertaining.



Floor 45

westbank

BIG

THERE ARE NO REPRESENTATIONS OR WARRANTIES HEREIN, MADE BY THE DEVELOPER, ITS AGENTS OR EMPLOYEES, OR ANY OTHER PERSON ON BEHALF OF THE DEVELOPER, OTHER THAN THOSE CONTAINED IN A CONTRACT OF PURCHASE AND SALE BETWEEN A PURCHASER AND THE DEVELOPER AND IN THE DISCLOSURE STATEMENT FOR THE DEVELOPMENT TO THE EXTENT MANDATED BY LAW. IN PARTICULAR, THE PURCHASER ACKNOWLEDGES AND AGREES THAT THE MATERIALS, SPECIFICATIONS, DETAILS, DIMENSIONS, LAYOUT AND FLOORPLANS SET OUT HEREIN OR OTHERWISE VIEWED BY THE PURCHASER ARE APPROXIMATE AND SUBJECT TO CHANGE WITHOUT NOTICE.

VANCOUVER HOUSE

ARCHITECT SERIES 4502



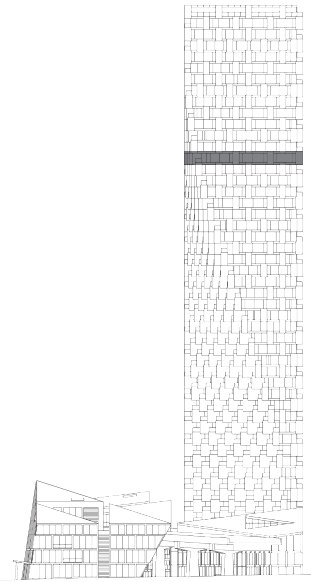
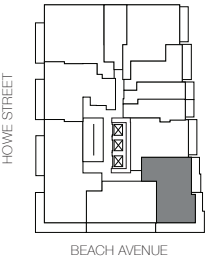
TWO BEDROOM

TOTAL LIVING 1352 SF

Indoor Living 981 sf

Outdoor Living 371 sf

A wrap-around terrace surrounds this corner home's open concept living, dining and kitchen area, providing a 180-degree view that spans from False Creek to English Bay. The two spacious bedrooms each have their own access to a balcony, while the master features *his and her* closets and a four-piece ensuite with soaker tub and shower.



Floor 45

westbank

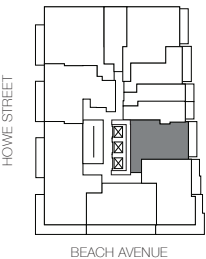
BIG

THERE ARE NO REPRESENTATIONS OR WARRANTIES HEREIN, MADE BY THE DEVELOPER, ITS AGENTS OR EMPLOYEES, OR ANY OTHER PERSON ON BEHALF OF THE DEVELOPER, OTHER THAN THOSE CONTAINED IN A CONTRACT OF PURCHASE AND SALE BETWEEN A PURCHASER AND THE DEVELOPER AND IN THE DISCLOSURE STATEMENT FOR THE DEVELOPMENT TO THE EXTENT MANDATED BY LAW. IN PARTICULAR, THE PURCHASER ACKNOWLEDGES AND AGREES THAT THE MATERIALS, SPECIFICATIONS, DETAILS, DIMENSIONS, LAYOUT AND FLOORPLANS SET OUT HEREIN OR OTHERWISE VIEWED BY THE PURCHASER ARE APPROXIMATE AND SUBJECT TO CHANGE WITHOUT NOTICE.

VANCOUVER HOUSE

ARCHITECT SERIES

4501



THERE ARE NO REPRESENTATIONS OR WARRANTIES HEREIN, MADE BY THE DEVELOPER, ITS AGENTS OR EMPLOYEES, OR ANY OTHER PERSON ON BEHALF OF THE DEVELOPER, OTHER THAN THOSE CONTAINED IN A CONTRACT OF PURCHASE AND SALE BETWEEN A PURCHASER AND THE DEVELOPER AND IN THE DISCLOSURE STATEMENT FOR THE DEVELOPMENT TO THE EXTENT MANDATED BY LAW. IN PARTICULAR, THE PURCHASER ACKNOWLEDGES AND AGREES THAT THE MATERIALS, SPECIFICATIONS, DETAILS, DIMENSIONS, LAYOUT AND FLOORPLANS SET OUT HEREIN OR OTHERWISE VIEWED BY THE PURCHASER ARE APPROXIMATE AND SUBJECT TO CHANGE WITHOUT NOTICE.

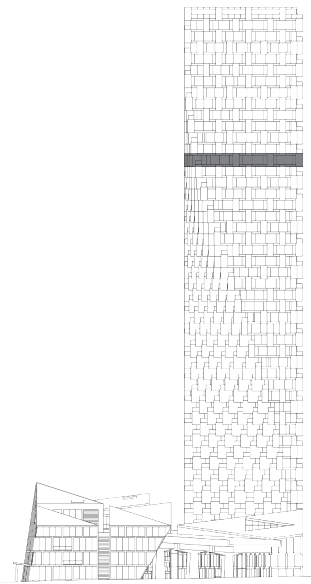
ONE BEDROOM ATELIER

TOTAL LIVING 994 SF

Indoor Living 877 sf

Outdoor Living 117 sf

Floor-to-ceiling glazing and a terrace along its entire frontage adorn this generously sized home with stunning views of False Creek. The entertainment friendly interior boasts an open concept living and dining area complete with an island kitchen. Sequestered for privacy, an adjacent atelier provides the perfect location for a home theatre, den, or guest bedroom.



Floor 45

westbank

BIG