



MILLENNIUM WATER

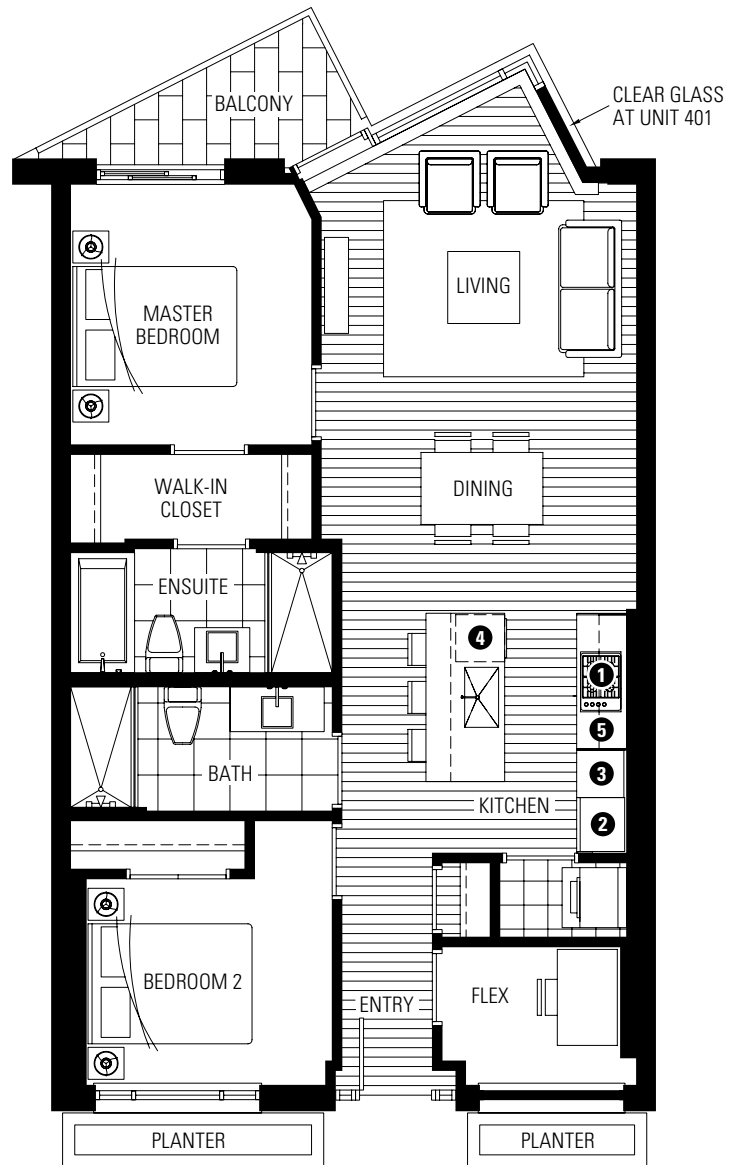
VANCOUVER'S LAST WATERFRONT COMMUNITY

PLAN B

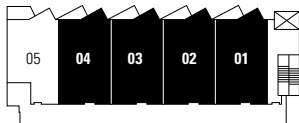
12 ATHLETES WAY

2 BEDROOM + FLEX
987-1009 SF LIVING
49 SF BALCONY

- 1 Miele gas cooktop
- 2 Sub-Zero refrigerator
- 3 Miele wall oven & Panasonic built-in microwave
- 4 Miele dishwasher
- 5 Eggersmann of Germany eco-wood cabinetry



ATHLETES WAY



4TH FLOOR

Washer/dryer are optional items. Dimensions, sizes, areas, specifications, layouts and materials are approximate only and subject to change without notice. Floor plates will vary between floors and appliance brands and sizes are subject to change. Please see a sales representative for more details. E.&O.E.

