



MILLENNIUM WATER

VANCOUVER'S LAST WATERFRONT COMMUNITY

PLAN E

12 ATHLETES WAY

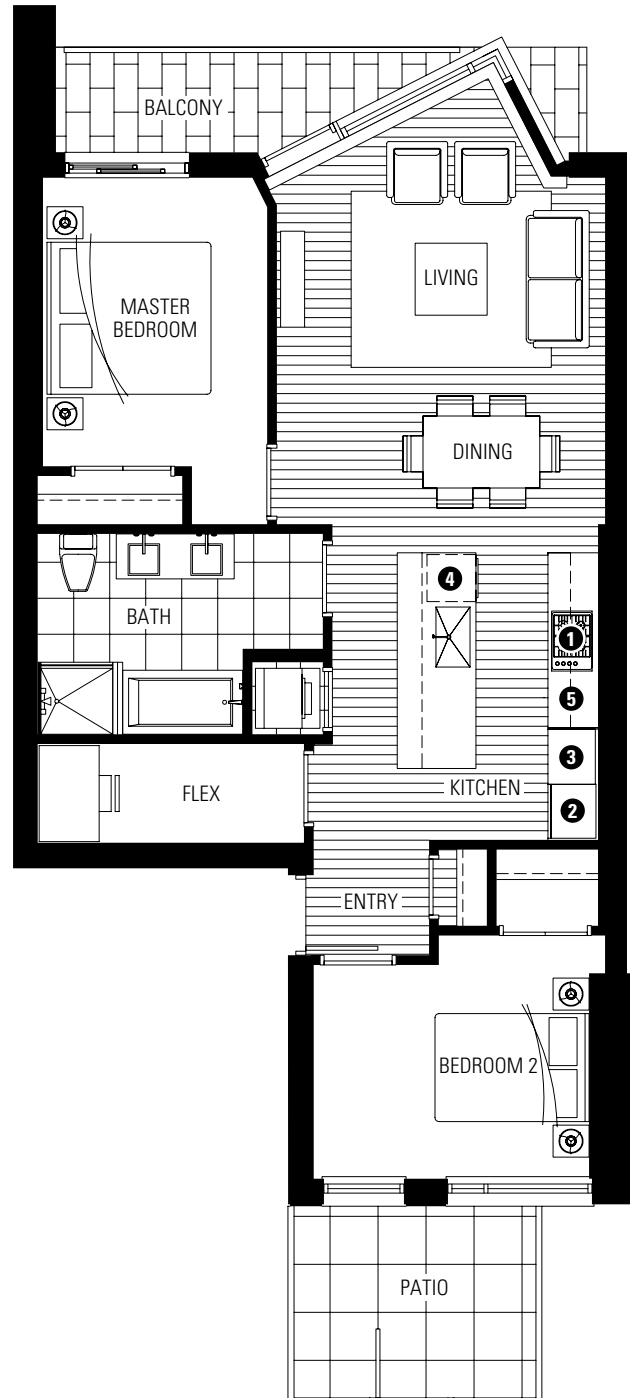
2 BEDROOM + FLEX

947 SF LIVING

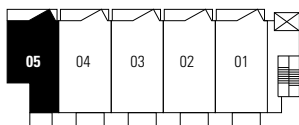
70 SF BALCONY

91 SF PATIO

- 1 Miele gas cooktop
- 2 Sub-Zero refrigerator
- 3 Miele wall oven & Panasonic built-in microwave
- 4 Miele dishwasher
- 5 Eggersmann of Germany eco-wood cabinetry



ATHLETES WAY



NORTH

3RD FLOOR

Washer/dryer are optional items. Dimensions, sizes, areas, specifications, layouts and materials are approximate only and subject to change without notice. Floor plates will vary between floors and appliance brands and sizes are subject to change. Please see a sales representative for more details. E.&O.E.

