



MILLENNIUM WATER

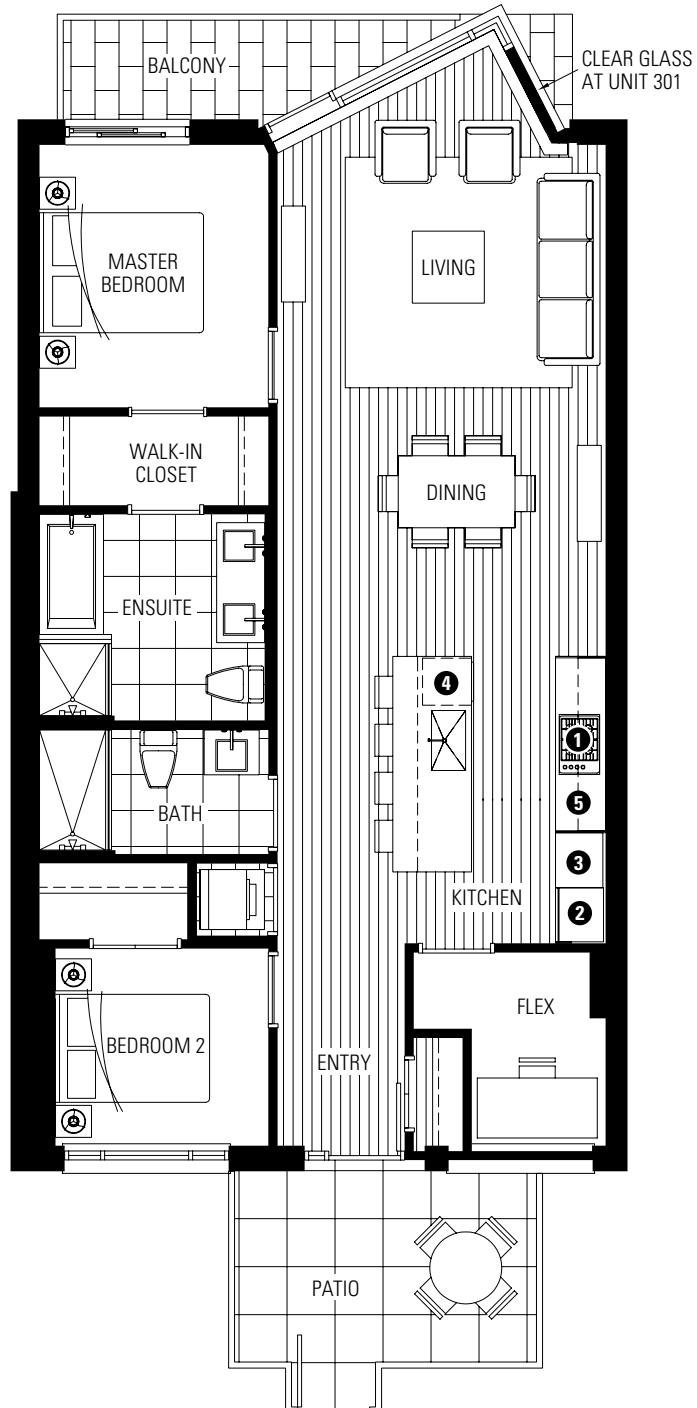
VANCOUVER'S LAST WATERFRONT COMMUNITY

PLAN F

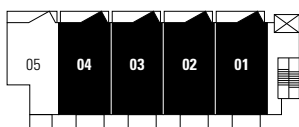
12 ATHLETES WAY

2 BEDROOM + FLEX
1089-1110 SF LIVING
70 SF BALCONY
113-115 SF PATIO

- 1 Miele gas cooktop
- 2 Sub-Zero refrigerator
- 3 Miele wall oven & Panasonic built-in microwave
- 4 Miele dishwasher
- 5 Eggersmann of Germany eco-wood cabinetry



ATHLETES WAY



3RD FLOOR

Washer/dryer are optional items. Dimensions, sizes, areas, specifications, layouts and materials are approximate only and subject to change without notice. Floor plates will vary between floors and appliance brands and sizes are subject to change. Please see a sales representative for more details. E.&O.E.

