

DESIGN RATIONALE

PUBLIC REALM

Vancouver's Seaside Greenway, a continuous public promenade and cycle lane along the waterfront, is an integral feature of the site. Public uses and attractions are located along its waterfront edge, like a 'string of pearls' to enhance the public experience.

The urban walk along the seawall, leads individuals from the Plaza of Nations to the Georgia Street Plaza. This urban promenade along the water's edge is uninterrupted by cars and lined with a variety of active shops and floating restaurants.

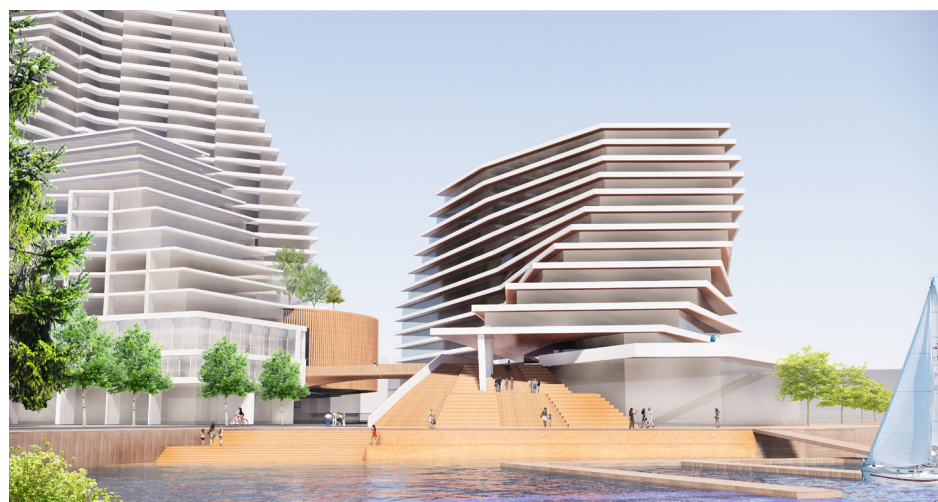
A central axis extends from BC places' Southern Entrance towards the seawall. This central axis leads spectators towards the site's central plaza, a vibrant pedestrian corridor lined with various shops and restaurants. This public space, partially covered from the elements, aims to foster social interaction among the community. The plaza becomes a flexible gathering space that can host a multitude of events year-round.

The proposed public grand stair gradually slopes down to the water's edge with a series of steps and platforms, providing unobstructed views of False Creek.

Strategically positioned to capture the afternoon sun, these steps will become a favourite spot to catch the sunlight in the summer. This gradual amphitheater also provides flexible opportunities for cultural and performing art events.

The proposed ramp access from the southern seawall will naturally bring up pedestrians from the waterfront promenade to a public terrace located on the south west corner of the building. This proposed public terrace will provide unobstructed panoramic views of False Creek and Cambie bridge.

This proposed upper public viewing platform is connected to the grand stair, providing access to a new pedestrian bridge connected to the civic centre, enabling a secondary upper level public route throughout the proposed complex.



DESIGN RATIONALE

USE

The project consists of a wide range of uses. Community facilities with an active street frontage promote inclusiveness and social connection within the community. These facilities include music venue, childcare, recreation, ice arena, and multi-purpose functions. Restaurants and shops animate street frontages with a fine grain pattern, whereas larger commercial frontages and office space occupy the second and third floor levels. Residential units are arranged above these active and fine grain uses, within a cohesively terraced landscape.

HISTORY

This project also seeks to celebrate the historical and contemporary significance to the aboriginal community. False Creek was once heavily used for fishing, harvesting and hunting by these nations. Compelling aboriginal artwork and features will be integrated to celebrate Musqueam, Squamish and Tsleil-Waututh Nations and the Urban Aboriginal community's significance to the site.

