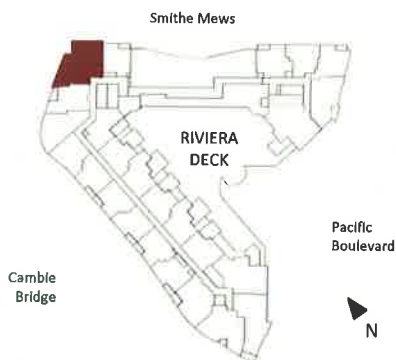
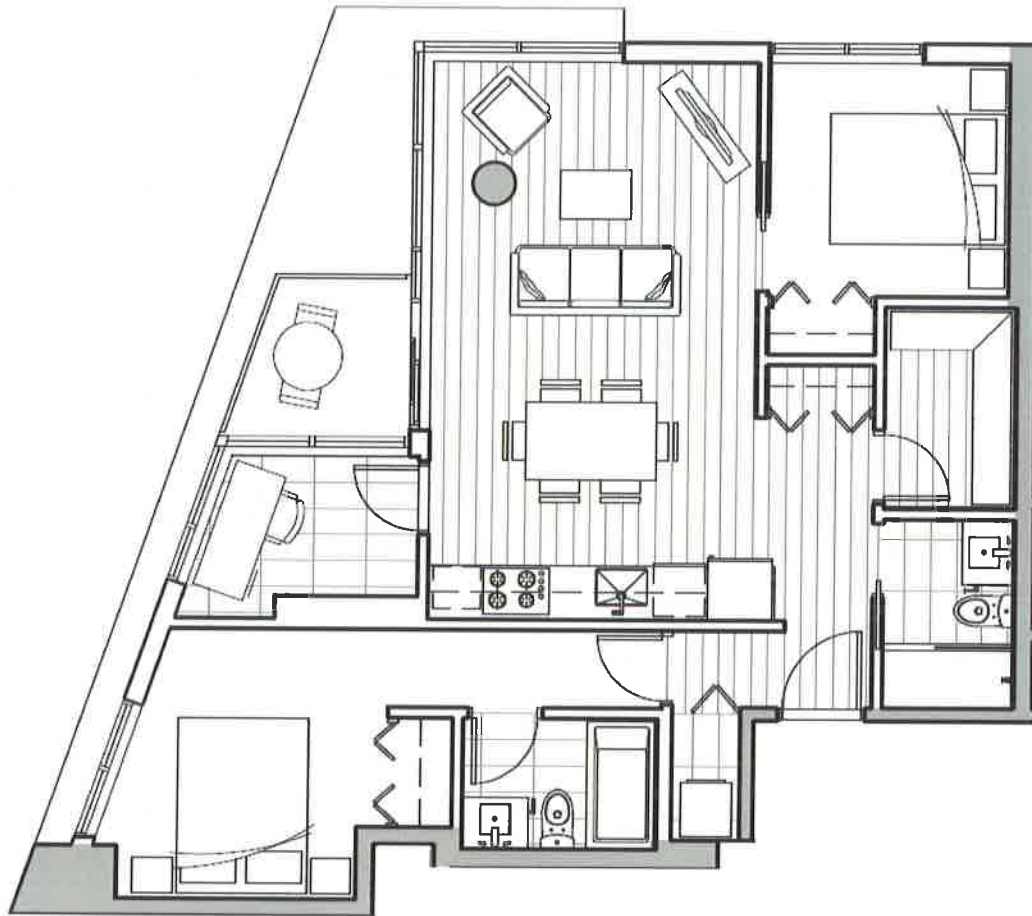


SUITE 309

2 Bedroom + Flex + Enclosed Balcony

Enclosed Area	925 sq. ft.
Outdoor Space	63 sq. ft.
Total Area	988 sq. ft.

The developer reserves the right to make modifications and changes to floor plan layouts and outdoor space. Approximate suite sizes are computed from the outside face of exterior walls, the outside face of walls adjacent to common areas and to the centerline of walls common to other suites. Approximate measurements for exterior balconies and terraces are computed from the outside face of exterior walls to the slab edges of the outside face of parapets. All illustrations reflect the artist's interpretation of the project and do not take into account the neighbouring buildings, physical structures, streets and landscape. These matters will be entirely by the terms of the applicable disclosure statement and the purchase contract in each case. This is not an offering for sale. Any offering can only be made with the applicable disclosure statement. Concord One Pacific Limited Partnership. E&OE.



SUITES W-22 + 2015 Floors 3 - 20

2 Bedroom + Flex + Enclosed Balcony

Enclosed Area	856 sq. ft.
Outdoor Space	42 sq. ft.
Total Area	898 sq. ft.

The developer reserves the right to make modifications and changes to floor plan layouts and outdoor space. Approximate suite sizes are computed from the outside face of exterior walls, the outside face of walls adjacent to common areas and to the centerline of walls common to other suites. Approximate measurements for exterior balconies and terraces are computed from the outside face of exterior walls to the slab edges of the outside face of parapets. All illustrations reflect the artist's interpretation of the project and do not take into account the neighbouring buildings, physical structures, streets and landscape. These matters will be entirely by the terms of the applicable disclosure statement and the purchase contract in each case. This is not an offering for sale. Any offering can only be made with the applicable disclosure statement. Concord One Pacific Limited Partnership. E&OE.