

# BC OnLine



BC OnLine Land Title Internet Service  
Provided in co-operation with  
Land Title and Survey Authority

LAND TITLE AND SURVEY AUTHORITY - DOCUMENT RETRIEVAL		WEB REQUEST	
CLIENT NAME:	MACDONALD REALTY LTD.		
ADDRESS:	2105 W. 38TH AVENUE VANCOUVER BC V6M 1R8		
PICK-UP INSTRUCTIONS:			
USER ID:	PA68940	APPLICATION NO.: LMS3215 LM	PAGES: 011
ACCOUNT NO.:	596393	REQUESTED AT: 06-10-20 13:58	
REFERENCE NO.:	V60810	FOLIO NO.: OFFICE	
REMARKS:			

## BC OnLine Land Title Fax Service

Help Desk Victoria ..... (250) 953-8200  
In B.C. .... 1-800-663-6102  
Administration Office ... (250) 953-8250  
Fax Number ..... (250) 953-8222

Persons who need to rely on a plan for legal purposes must examine the official version at the Land Title Office in which the plan is deposited.

The bylaw and common property sheets attached to strata plans have been repealed. Information regarding the bylaws and/or dealings affecting the common property of strata plans must be obtained from the general index and/or common property index on ALTOS. Refer to the BC OnLine user guide for access information.



STRATA PLAN LMS 2215

SECOND SHEET, SHEET 4 OF 22 SHEETS

CONDOMINIUM ACT

LOT NUMBER	SHEET NUMBER	FORM 1 SCHEDULE OF UNIT ENTITLEMENT UNIT ENTITLEMENT	FORM 2 SCHEDULE OF RIGHTS UNION RESTRICTIONS INTEREST UPON RESTRICTIONS	FORM 3 SCHEDULE OF UNITING RIGHTS NUMBER OF UNITS
53	7.20	417	480	1
54	7.20	417	414	1
55	7.20	706	660	1
56	8.20	531	1123	1
57	8.20	803	690	1
58	8.20	803	1495	1
59	8.20	803	620	1
60	8.20	803	800	1
61	7.20	706	702	1
62	7.21	417	614	1
63	7.21	706	690	1
64	7.21	531	671	1
65	7.21	531	720	1
66	8.21	505	715	1
67	8.21	505	680	1
68	8.21	505	695	1
69	8.21	505	680	1
70	8.21	505	680	1
71	8.21	505	680	1
72	8.21	505	680	1
73	8.21	505	680	1
74	8.21	505	680	1
75	8.21	505	680	1
76	8.21	505	680	1
77	8.21	505	680	1
78	8.21	505	680	1
79	8.21	505	680	1
80	8.21	505	680	1
81	8.21	505	680	1
82	8.21	505	680	1
83	8.21	505	680	1
84	8.21	505	680	1
85	8.21	505	680	1
86	8.21	505	680	1
87	8.21	505	680	1
88	8.21	505	680	1
89	8.21	505	680	1
90	8.21	505	680	1
91	8.21	505	680	1
92	8.21	505	680	1
93	8.21	505	680	1
94	8.21	505	680	1
95	8.21	505	680	1
96	8.21	505	680	1
97	8.21	505	680	1
98	8.21	505	680	1
99	8.21	505	680	1
100	8.21	505	680	1
101	8.21	505	680	1
102	8.21	505	680	1
103	8.21	505	680	1
104	8.21	505	680	1
105	8.21	505	680	1
106	8.21	505	680	1

FORMING A 2024-6  
FILE # C-0022

DATE: APRIL 3, 1998  
M.C.O.

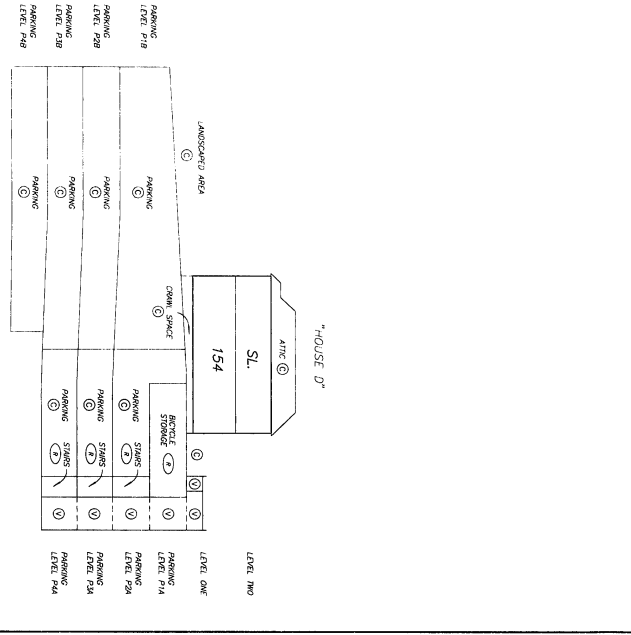
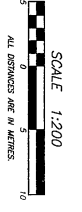
STRATA PLAN LMS 2215

SECOND SHEET, SHEET 5 OF 22 SHEETS

CONDOMINIUM ACT

LOT NUMBER	SHEET NUMBER	FORM 1 SCHEDULE OF UNIT ENTITLEMENT UNIT ENTITLEMENT	FORM 2 SCHEDULE OF RIGHTS UNION RESTRICTIONS INTEREST UPON RESTRICTIONS	FORM 3 SCHEDULE OF UNITING RIGHTS NUMBER OF UNITS
107	8.24	531	722	1
108	7.24	706	885	1
109	7.24	418	615	1
110	7.25	525	718	1
111	7.25	706	590	1
112	8.25	531	726	1
113	8.25	803	1180	1
114	8.25	527	740	1
115	8.25	803	1120	1
116	8.25	531	762	1
117	7.25	706	1023	1
118	7.25	418	623	1
119	7.25	418	623	1
120	7.25	418	623	1
121	7.25	418	623	1
122	7.25	418	623	1
123	7.25	418	623	1
124	7.25	418	623	1
125	7.25	418	623	1
126	7.25	418	623	1
127	7.25	418	623	1
128	7.25	418	623	1
129	7.25	418	623	1
130	7.25	418	623	1
131	7.25	418	623	1
132	7.25	418	623	1
133	7.25	418	623	1
134	7.25	418	623	1
135	7.25	418	623	1
136	7.25	418	623	1
137	7.25	418	623	1
138	7.25	418	623	1
139	7.25	418	623	1
140	7.25	418	623	1
141	7.25	418	623	1
142	7.25	418	623	1
143	7.25	418	623	1
144	7.25	418	623	1
145	7.25	418	623	1
146	7.25	418	623	1
147	7.25	418	623	1
148	7.25	418	623	1
149	7.25	418	623	1
150	7.25	418	623	1
151	7.25	418	623	1
152	7.25	418	623	1
153	7.25	418	623	1
154	7.25	418	623	1
155	7.25	418	623	1
156	7.25	418	623	1
157	7.25	418	623	1
158	7.25	418	623	1
159	7.25	418	623	1
160	7.25	418	623	1
161	7.25	418	623	1
162	7.25	418	623	1
163	7.25	418	623	1
164	7.25	418	623	1
165	7.25	418	623	1
166	7.25	418	623	1
167	7.25	418	623	1
168	7.25	418	623	1
169	7.25	418	623	1
170	7.25	418	623	1
171	7.25	418	623	1
172	7.25	418	623	1
173	7.25	418	623	1
174	7.25	418	623	1
175	7.25	418	623	1
176	7.25	418	623	1
177	7.25	418	623	1
178	7.25	418	623	1
179	7.25	418	623	1
180	7.25	418	623	1
181	7.25	418	623	1
182	7.25	418	623	1
183	7.25	418	623	1
184	7.25	418	623	1
185	7.25	418	623	1
186	7.25	418	623	1
187	7.25	418	623	1
188	7.25	418	623	1
189	7.25	418	623	1
190	7.25	418	623	1
191	7.25	418	623	1
192	7.25	418	623	1
193	7.25	418	623	1
194	7.25	418	623	1
195	7.25	418	623	1
196	7.25	418	623	1
197	7.25	418	623	1
198	7.25	418	623	1
199	7.25	418	623	1
200	7.25	418	623	1
201	7.25	418	623	1
202	7.25	418	623	1
203	7.25	418	623	1
204	7.25	418	623	1
205	7.25	418	623	1
206	7.25	418	623	1
207	7.25	418	623	1
208	7.25	418	623	1
209	7.25	418	623	1
210	7.25	418	623	1
211	7.25	418	623	1
212	7.25	418	623	1
213	7.25	418	623	1
214	7.25	418	623	1
215	7.25	418	623	1
216	7.25	418	623	1
217	7.25	418	623	1
218	7.25	418	623	1
219	7.25	418	623	1
220	7.25	418	623	1
221	7.25	418	623	1
222	7.25	418	623	1
223	7.25	418	623	1
224	7.25	418	623	1
225	7.25	418	623	1
226	7.25	418	623	1
227	7.25	418	623	1
228	7.25	418	623	1
229	7.25	418	623	1
230	7.25	418	623	1
231	7.25	418	623	1
232	7.25	418	623	1
233	7.25	418	623	1
234	7.25	418	623	1
235	7.25	418	623	1
236	7.25	418	623	1
237	7.25	418	623	1
238	7.25	418	623	1
239	7.25	418	623	1
240	7.25	418	623	1
241	7.25	418	623	1
242	7.25	418	623	1
243	7.25	418	623	1
244	7.25	418	623	1
245	7.25	418	623	1
246	7.25	418	623	1
247	7.25	418	623	1
248	7.25	418	623	1
249	7.25	418	623	1
250	7.25	418	623	1
251	7.25	418	623	1
252	7.25	418	623	1
253	7.25	418	623	1
254	7.25	418	623	1
255	7.25	418	623	1
256	7.25	418	623	1
257	7.25	418	623	1
258	7.25	418	623	1
259	7.25	418	623	1
260	7.25	418	623	1
261	7.25	418	623	1
262	7.25	418	623	1
263	7.25	418	623	1
264	7.25	418	623	1
265	7.25	418	623	1
266	7.25	418	623	1
267	7.25	418	623	1
268	7.25	418	623	1
269	7.25	418	623	1
270	7.25	418	623	1
271	7.25	418	623	1
272	7.25	418	623	1
273	7.25	418	623	1
274	7.25	418	623	1
275	7.25	418	623	1
276	7.25	418	623	1
277	7.25	418	623	1
278	7.25	418	623	1
279	7.25	418	623	1
280	7.25	418	623	1
281	7.25	418	623	1
282	7.25	418	623	1
283	7.25	418	623	1
284	7.25	418	623	1
285	7.25	418	623	1
286	7.25	418	623	1
287	7.25	418	623	1
288	7.25	418	623	1
289	7.25	418	623	1
290	7.25	418	623	1
291	7.25	418	623	1
292	7.25	418	623	1
293	7.25	418	623	1
294	7.25	418	623	1
295	7.25	418	623	1
296	7.25	418	623	1
297	7.25	418	623	1
298	7.25	418	623	1
299	7.25	418	623	1
300	7.25	418	623	1
301	7.25	418	623	1
302	7.25	418	623	1
303	7.25	418	623	1
304	7.25	418	623	1
305	7.25	418	623	1
306	7.25	418	623	1
307	7.25	418	623	1
308	7.25	418	623	1
309	7.25	418	623	1
310	7.25	418	623	1
311	7.25	418	623	1
312	7.25	418	623	1
313	7.25	418	623	1
314	7.25	418	623	1
315	7.25	418	623	1
316	7.25	418	623	1

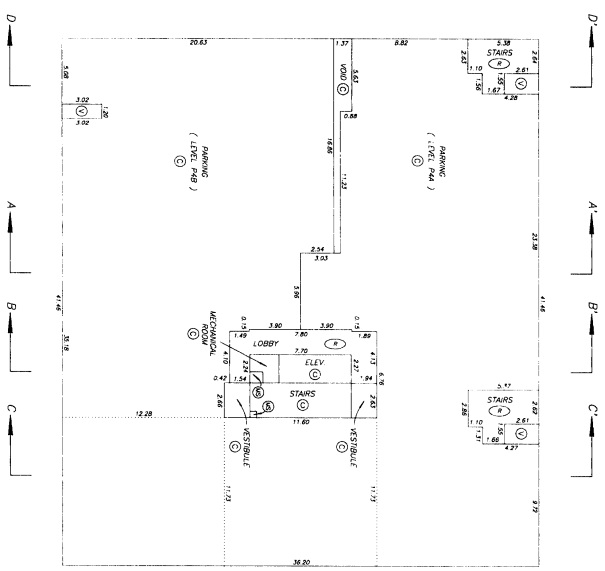
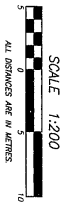




DATE: APRIL 3, 1988  
P.C.B.

PARKING LEVEL FOUR

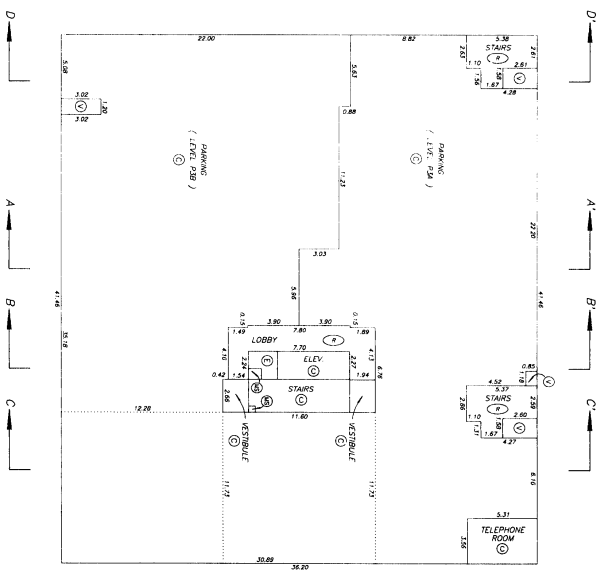
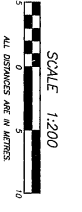
STRATA PLAN LMS 3215



DATE: APRIL 3, 1988  
P.C.B.

PARKING LEVEL THREE

STRATA PLAN LMS 3215

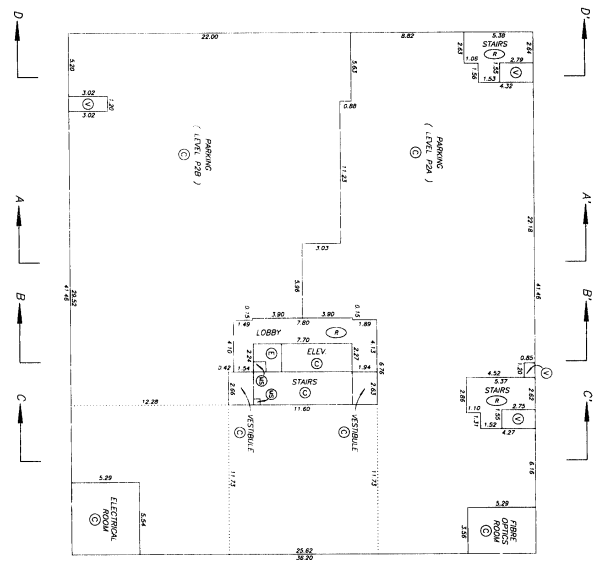
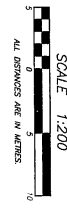


DATE: APRIL 3, 1988  
P.C.B.

PARKING LEVEL TWO

STRATA PLAN LMS 2215

SHEET 13 OF 32 SHEETS

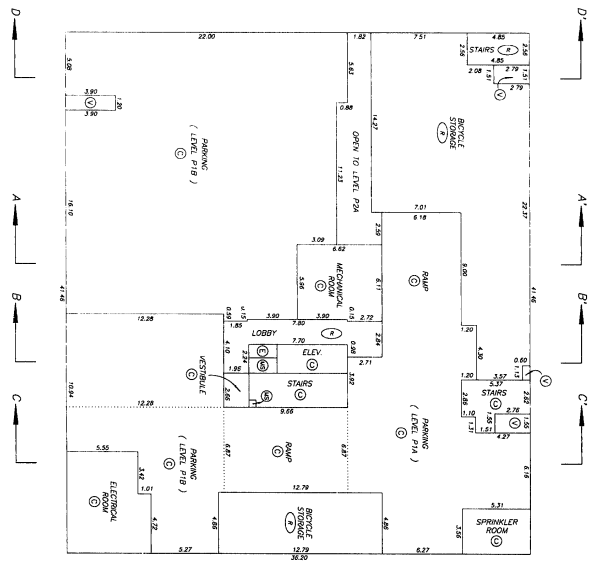
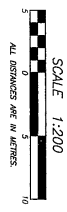


DRAWING A-22000-6  
DATE: APRIL 3, 1998  
P.M.C. & S.

PARKING LEVEL ONE

STRATA PLAN LMS 2215

SHEET 14 OF 32 SHEETS

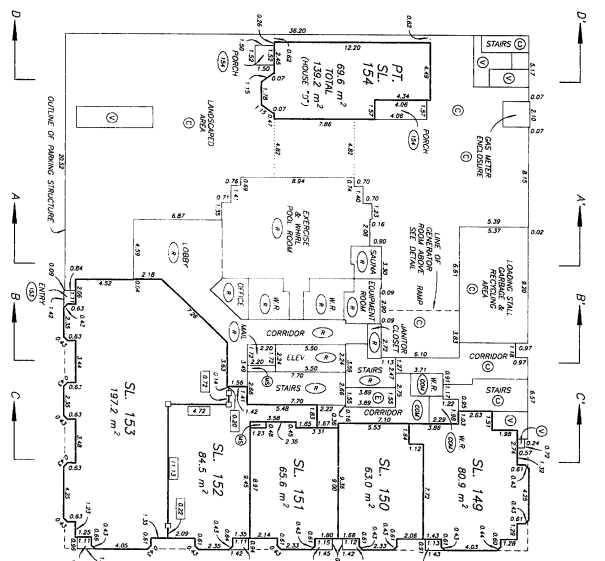
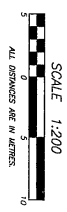


DRAWING A-22000-6  
DATE: APRIL 3, 1998  
P.M.C. & S.

LEVEL ONE FLOOR PLAN

STRATA PLAN LMS 2215

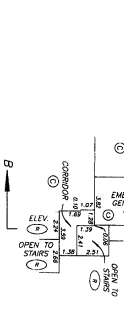
SHEET 15 OF 32 SHEETS



DRAWING A-22000-6  
DATE: APRIL 3, 1998  
P.M.C. & S.

DETAIL

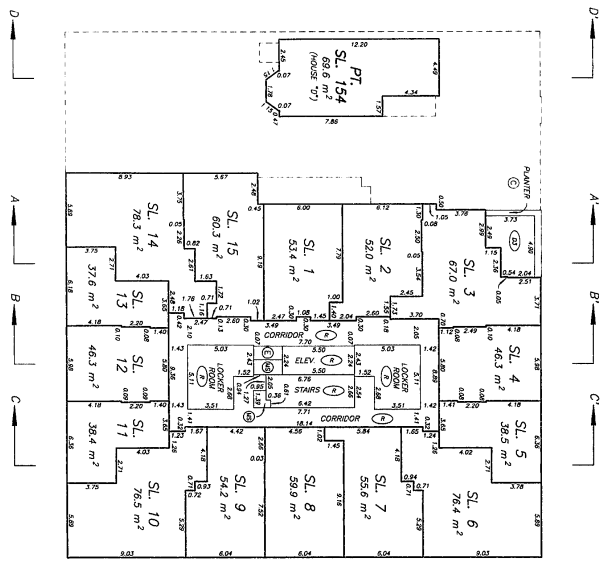
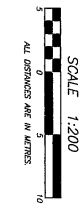
MEZZANINE LEVEL  
GENERATOR ROOM



LEVEL TWO FLOOR PLAN

STRATA PLAN LMS 3215

SHEET 16 OF 32 SHEETS



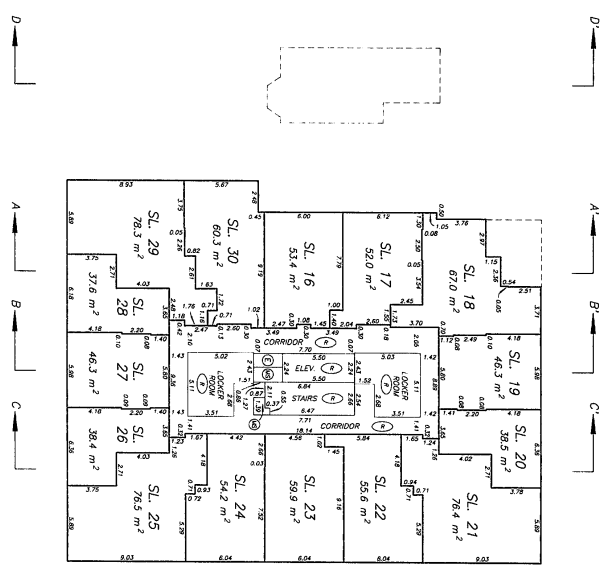
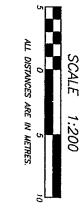
DRAWING L 2008-6 FILE # 3008-C3

DATE: APRIL 1, 1998  
P.P. & S.

LEVEL THREE FLOOR PLAN

STRATA PLAN LMS 3215

SHEET 17 OF 32 SHEETS



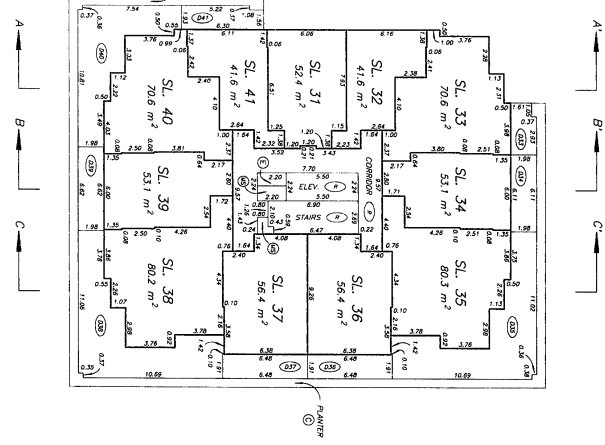
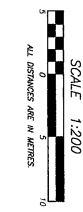
DRAWING L 2008-6 FILE # 3008-C3

DATE: APRIL 1, 1998  
P.P. & S.

LEVEL FOUR FLOOR PLAN

STRATA PLAN LMS 3215

SHEET 18 OF 32 SHEETS



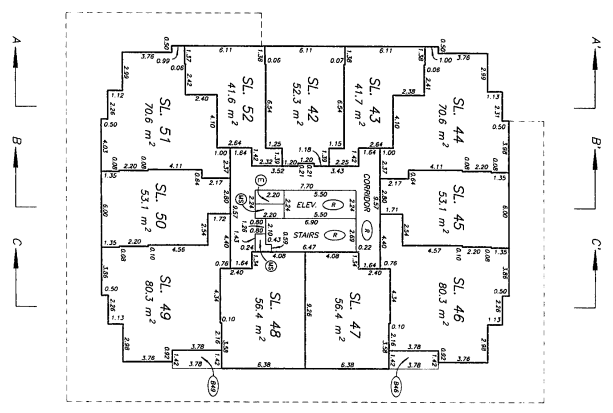
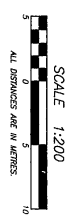
DRAWING L 2008-6 FILE # 3008-C3

DATE: APRIL 1, 1998  
P.P. & S.

LEVEL FIVE FLOOR PLAN

STRATA PLAN LMS 3225

SHEET 19 OF 32 SHEETS

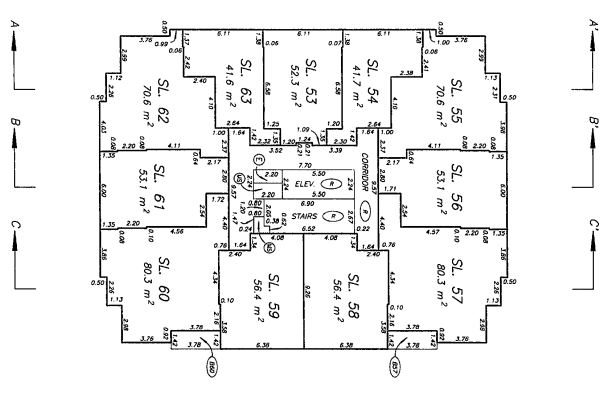
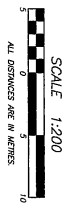


DRAWING NO. 200206-6 DATE: APRIL 3, 1998

LEVEL SIX FLOOR PLAN

STRATA PLAN LMS 3225

SHEET 20 OF 32 SHEETS

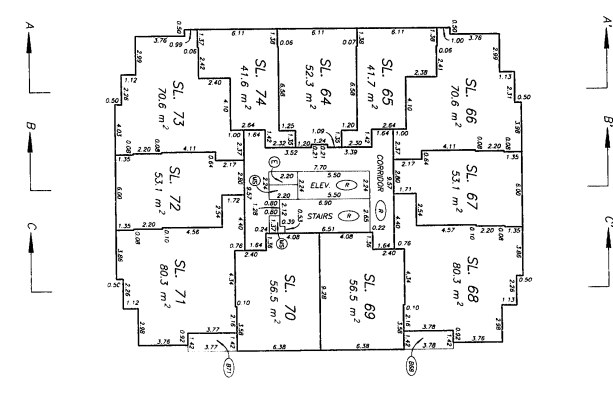


DRAWING NO. 200206-6 DATE: APRIL 3, 1998

LEVEL SEVEN FLOOR PLAN

STRATA PLAN LMS 3225

SHEET 21 OF 32 SHEETS



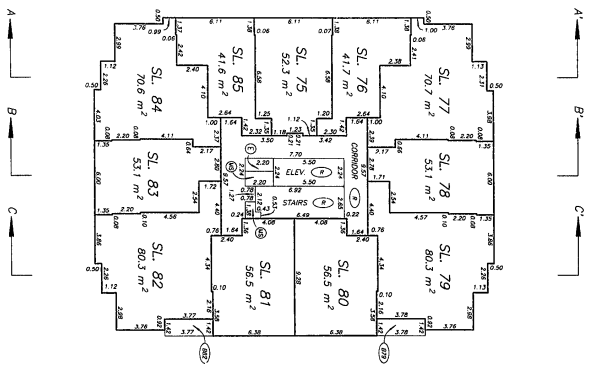
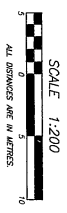
DRAWING NO. 200206-6 DATE: APRIL 3, 1998



LEVEL EIGHT  
FLOOR PLAN

STRAITA PLAN LMS 3225

SHEET 23 OF 32 SHEETS



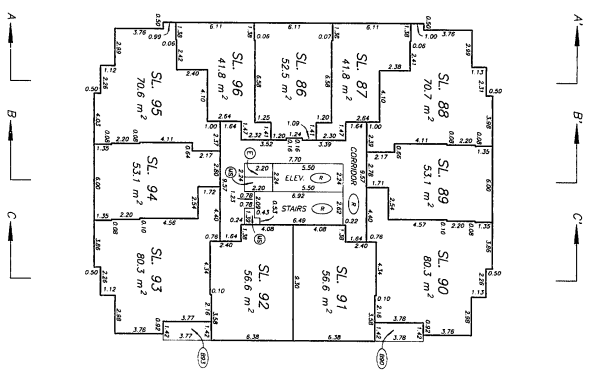
DRAWING # 2006-10

DATE: APRIL 3, 1998  
PAC

LEVEL NINE  
FLOOR PLAN

STRAITA PLAN LMS 3225

SHEET 23 OF 32 SHEETS



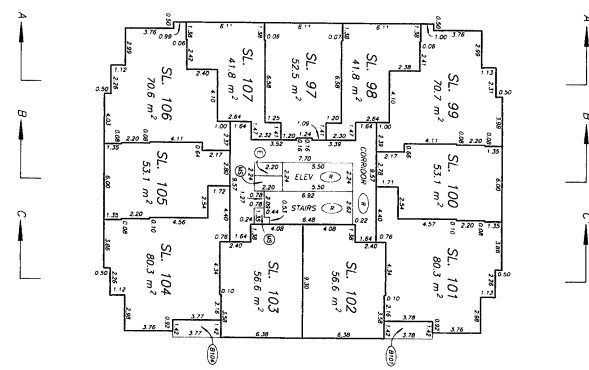
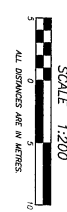
DRAWING # 2006-10

DATE: APRIL 3, 1998  
PAC

LEVEL TEN  
FLOOR PLAN

STRAITA PLAN LMS 3225

SHEET 24 OF 32 SHEETS



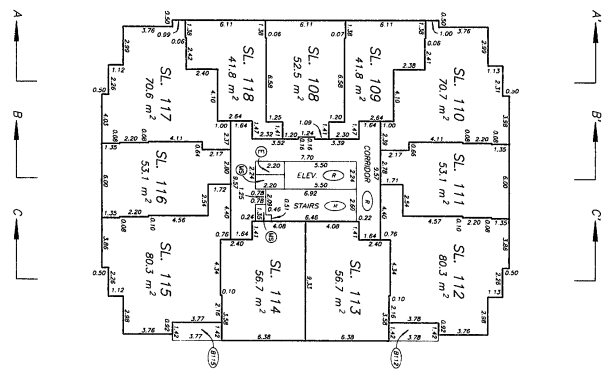
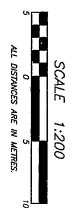
DRAWING # 2006-10

DATE: APRIL 3, 1998  
PAC

LEVEL ELEVEN  
FLOOR PLAN

STRATA PLAN LMS 3215

SHEET 25 OF 32 SHEETS



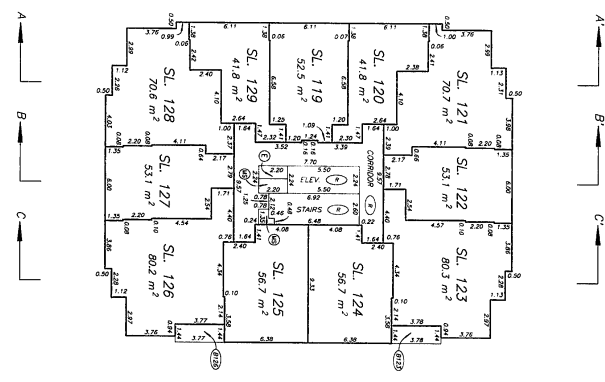
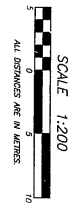
DRAWING # 2008-6  
REV # 2008-113

DATE : APRIL 5, 1998  
M.C.B.

LEVEL TWELVE  
FLOOR PLAN

STRATA PLAN LMS 3215

SHEET 26 OF 32 SHEETS



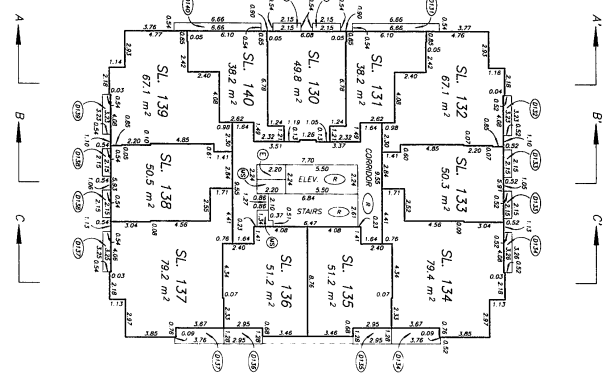
DRAWING # 2008-6  
REV # 2008-113

DATE : APRIL 5, 1998  
M.C.B.

LEVEL THIRTEEN  
FLOOR PLAN

STRATA PLAN LMS 3215

SHEET 27 OF 32 SHEETS



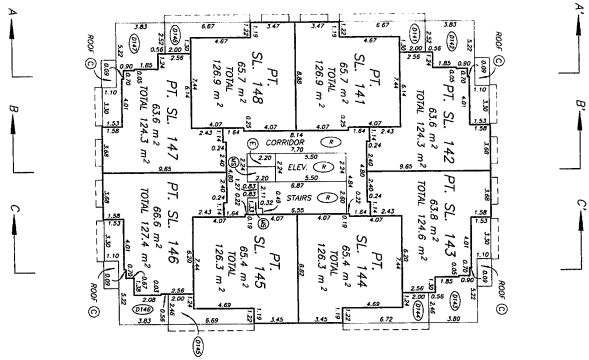
DRAWING # 2008-6  
REV # 2008-113

DATE : APRIL 5, 1998  
M.C.B.

LEVEL FOURTEEN  
FLOOR PLAN

STRATA PLAN LMS 3215

SHEET 28 OF 32 SHEETS



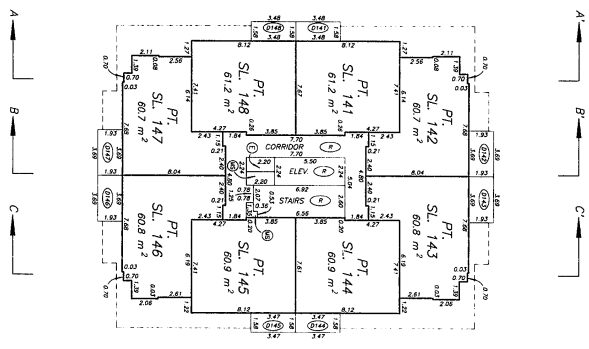
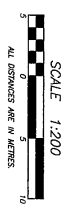
DRAWING A 2006-6  
FILE # 2006-14

DATE: APRIL 3, 1998  
PPT & B

LEVEL FIFTEEN  
FLOOR PLAN

STRATA PLAN LMS 3215

SHEET 29 OF 32 SHEETS



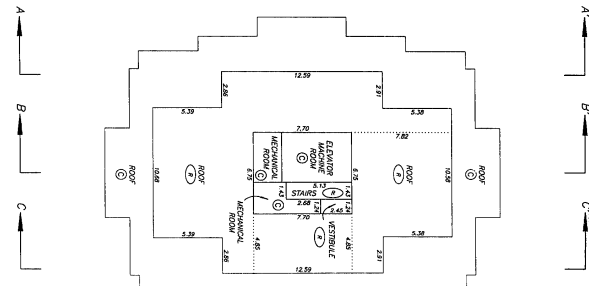
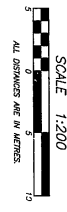
DRAWING A 2006-6  
FILE # 2006-13

DATE: APRIL 3, 1998  
PPT & B

LEVEL SIXTEEN  
ROOF PLAN

STRATA PLAN LMS 3215

SHEET 30 OF 32 SHEETS



DRAWING A 2006-6  
FILE # 2006-16

DATE: APRIL 3, 1998  
PPT & B

