



MILLENNIUM WATER

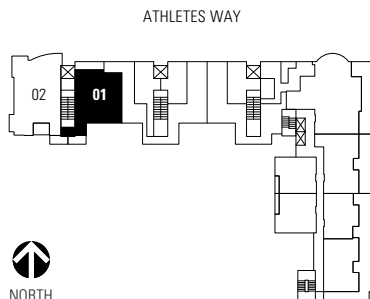
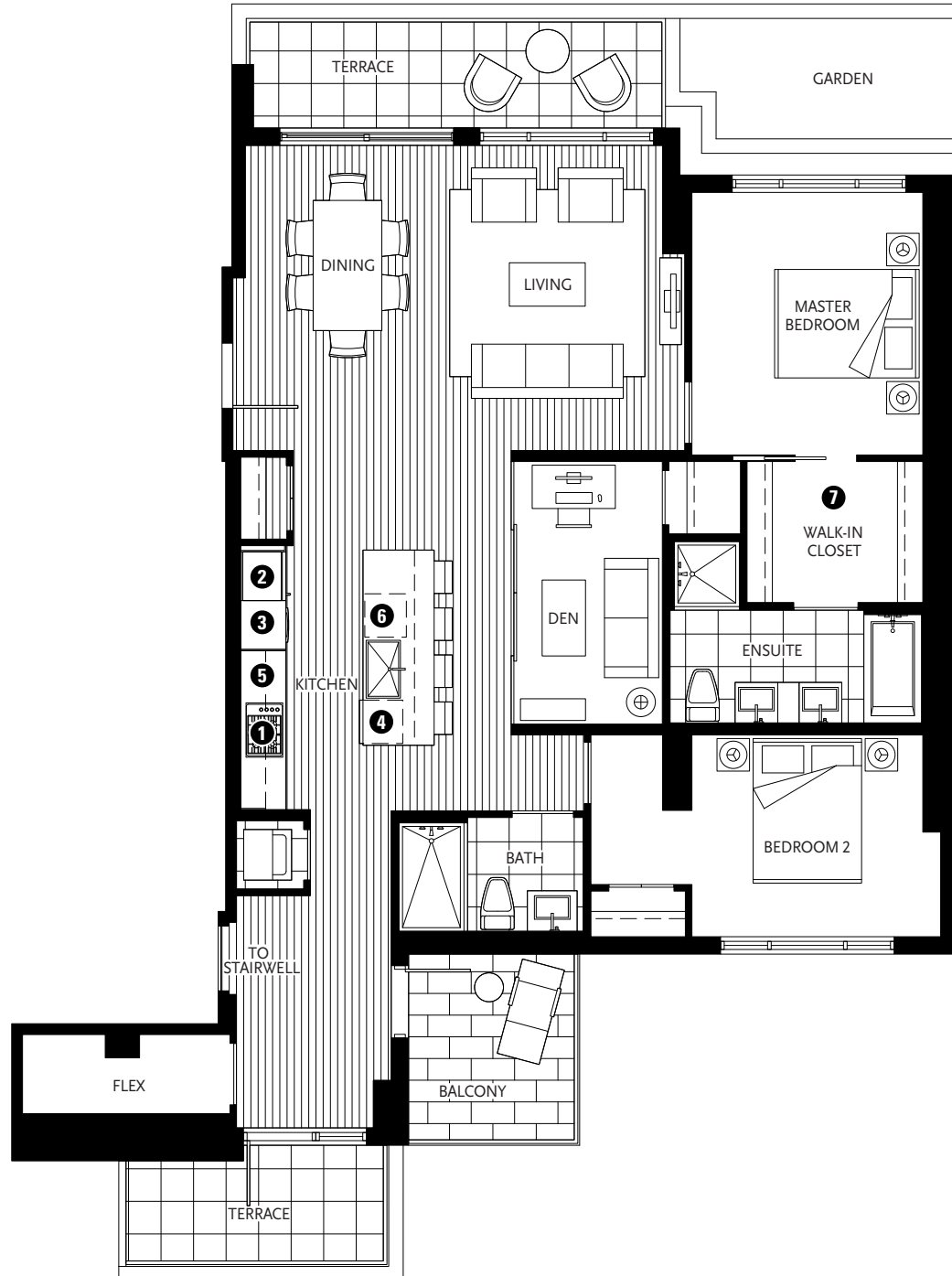
VANCOUVER'S LAST WATERFRONT COMMUNITY

PLAN V

138 ATHLETES WAY

2 BEDROOM + DEN + FLEX
1371 SF LIVING
73 SF BALCONY
325 SF TERRACE

- 1 Miele gas cooktop
- 2 Sub-Zero refrigerator
- 3 Miele wall oven & Panasonic built-in microwave
- 4 Miele dishwasher
- 5 Eggersmann of Germany eco-wood cabinetry
- 6 Sub-Zero wine cooler
- 7 Cabina custom built walk-in closet from Italy



7TH FLOOR

Washer/dryer are optional items. Dimensions, sizes, areas, specifications, layouts and materials are approximate only and subject to change without notice. Floorplates and unit numbers may vary between floors and appliance brands and sizes are subject to change. Please see a sales representative for more details. E.&O.E.

