



# MILLENNIUM WATER

VANCOUVER'S LAST WATERFRONT COMMUNITY

## PLAN W LOWER FLOOR

## 138 ATHLETES WAY

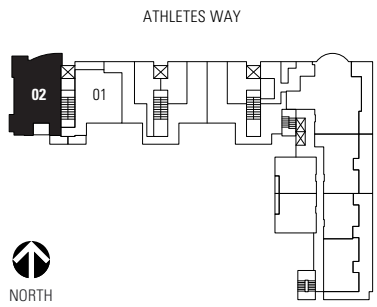
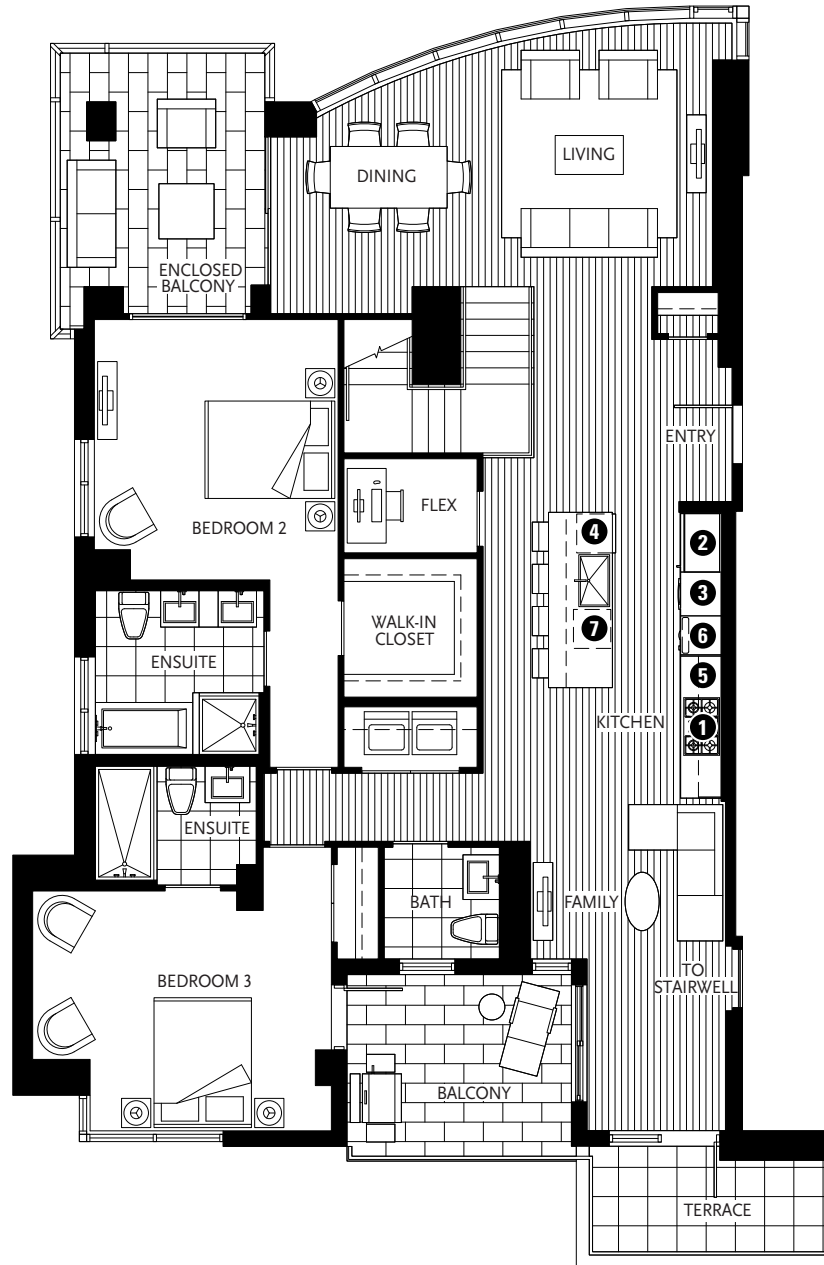
3 BEDROOM + FAMILY + 2 ENCLOSED BALCONIES + FLEX

3037 SF LIVING

117 SF BALCONY

715 SF TERRACE

- 1 Miele 5-zone gas cooktop
- 2 Sub-Zero refrigerator
- 3 Miele wall oven & Miele speed oven
- 4 Miele dishwasher
- 5 Eggersmann of Germany eco-wood cabinetry
- 6 Miele built-in coffee maker with Miele warming drawer
- 7 Sub-Zero wine cooler
- 8 Cabina custom built walk-in closet from Italy



7TH FLOOR

Washer/dryer are optional items. Dimensions, sizes, areas, specifications, layouts and materials are approximate only and subject to change without notice. Floorplates and unit numbers may vary between floors and appliance brands and sizes are subject to change. Please see a sales representative for more details. E.&O.E.



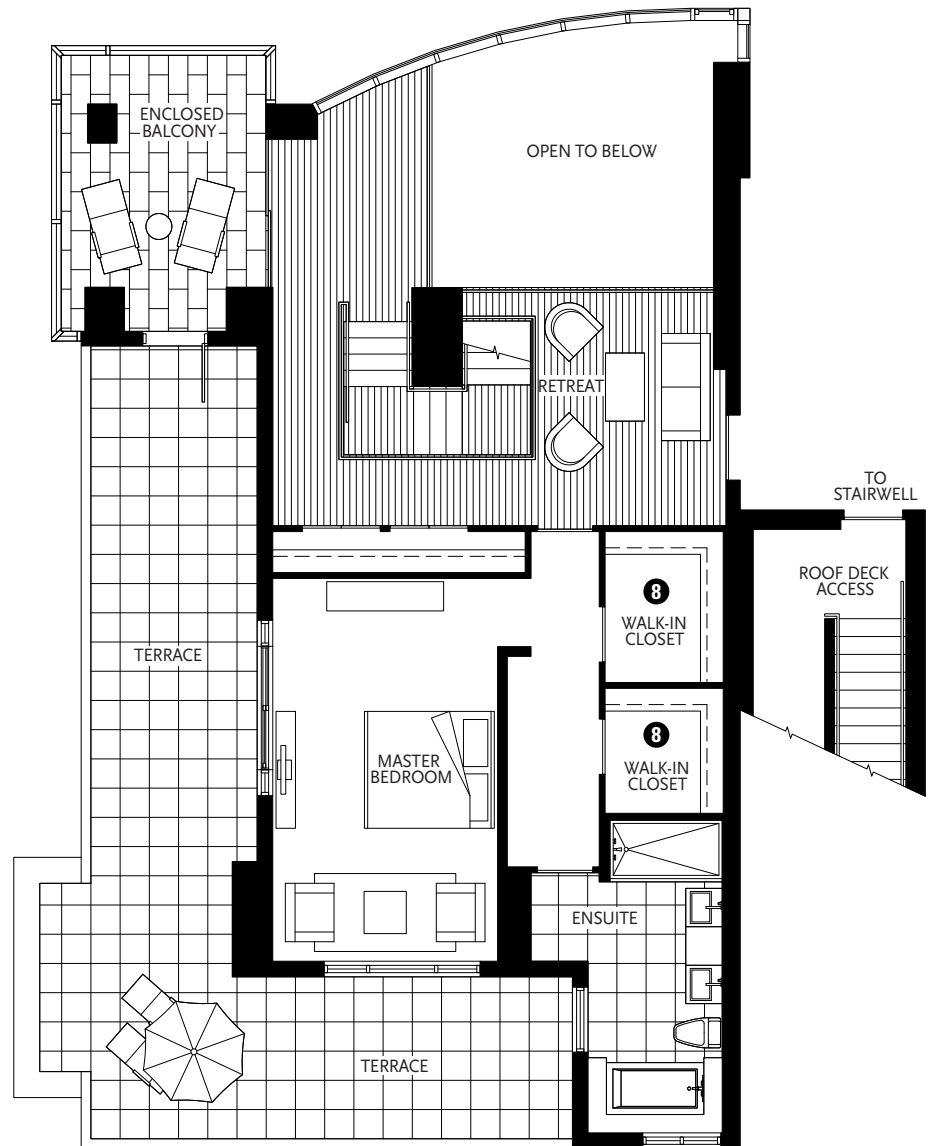


# MILLENNIUM WATER

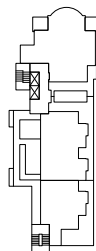
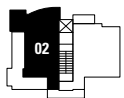
VANCOUVER'S LAST WATERFRONT COMMUNITY

PLAN W MIDDLE FLOOR

138 ATHLETES WAY



ATHLETES WAY



MANITOBA STREET



UNIT 702 - MIDDLE FLOOR

Washer/dryer are optional items. Dimensions, sizes, areas, specifications, layouts and materials are approximate only and subject to change without notice. Floorplates and unit numbers may vary between floors and appliance brands and sizes are subject to change. Please see a sales representative for more details. E.&O.E.



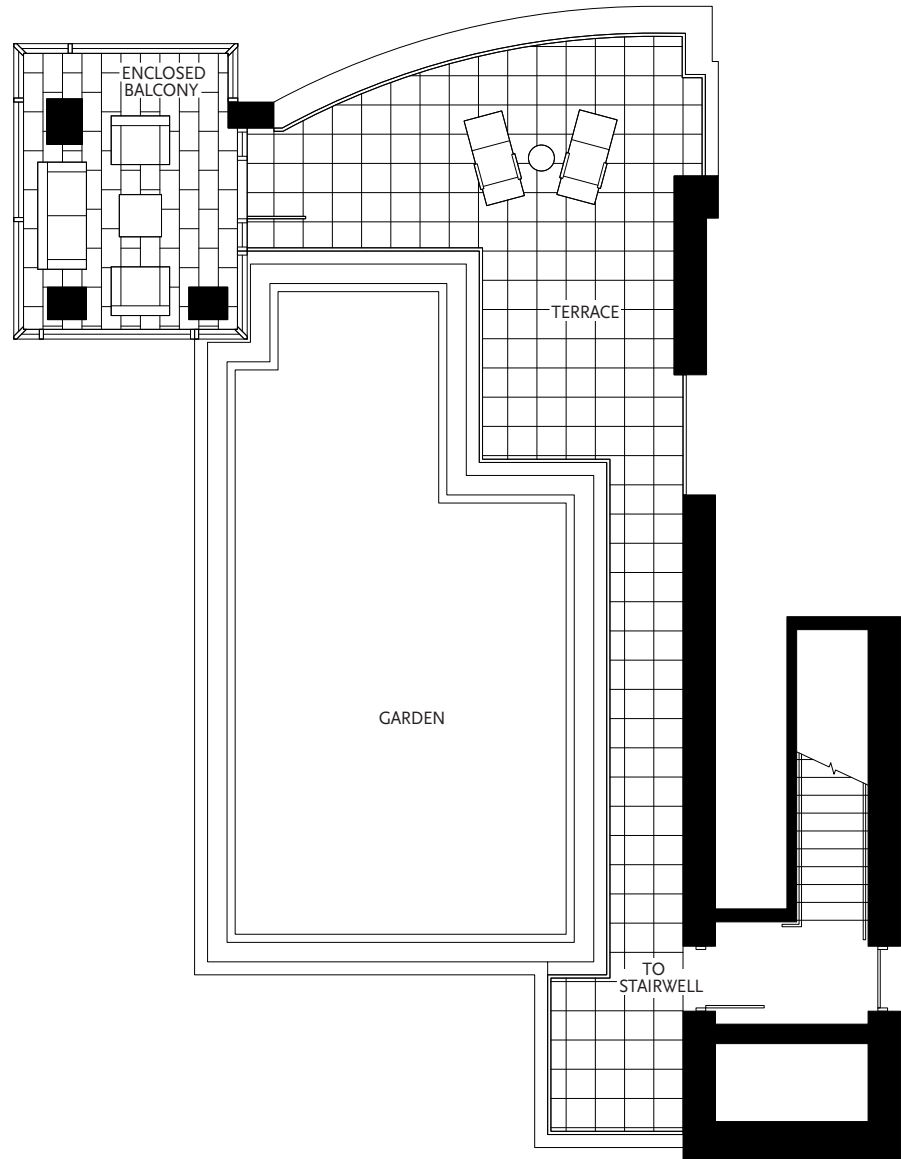


# MILLENNIUM WATER

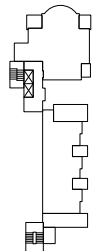
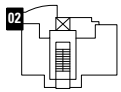
VANCOUVER'S LAST WATERFRONT COMMUNITY

## PLAN W UPPER FLOOR

## 138 ATHLETES WAY



ATHLETES WAY



MANITOBA STREET



UNIT 702 – UPPER FLOOR

Washer/dryer are optional items. Dimensions, sizes, areas, specifications, layouts and materials are approximate only and subject to change without notice. Floorplates and unit numbers may vary between floors and appliance brands and sizes are subject to change. Please see a sales representative for more details. E.&O.E.

