

# Integration of Public and Private Realm





# Ground Plane Studies and Precedents



Bamboo Gateway



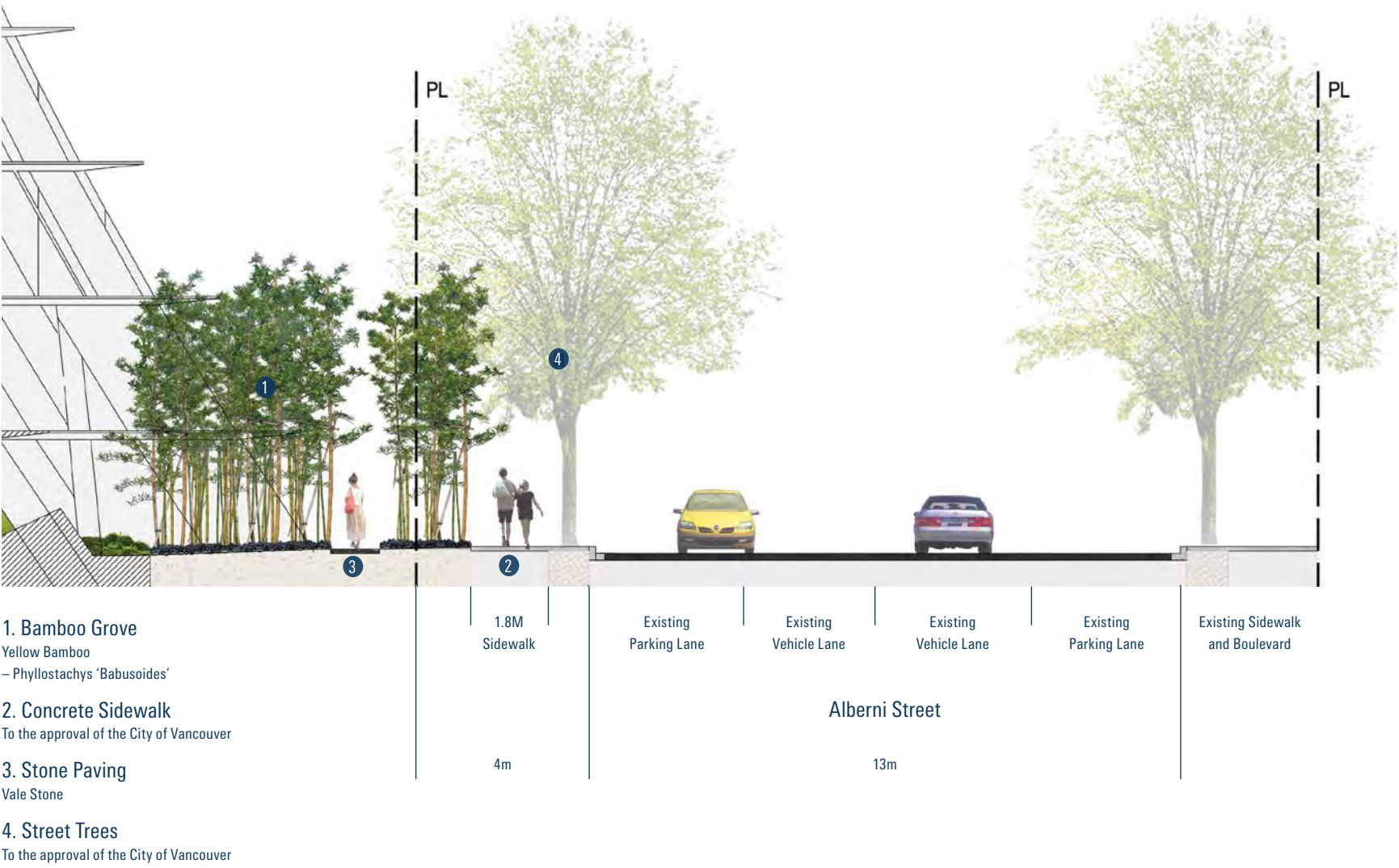
Vals Stone Paving



Semi-Exterior Pond

# Public Realm

## Alberni Street



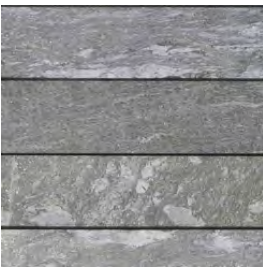
**Bamboo Grove**  
Yellow Bamboo  
– Phyllostachys 'Babusoides'



**Water Planting**  
Equisetum



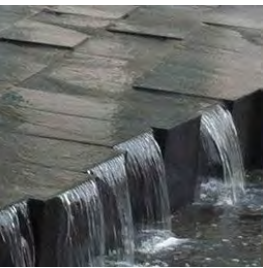
**Vertical Boulders**



**Water Feature**



**Moss and Boulder Carpet**  
Cedar Moss and groundcovers



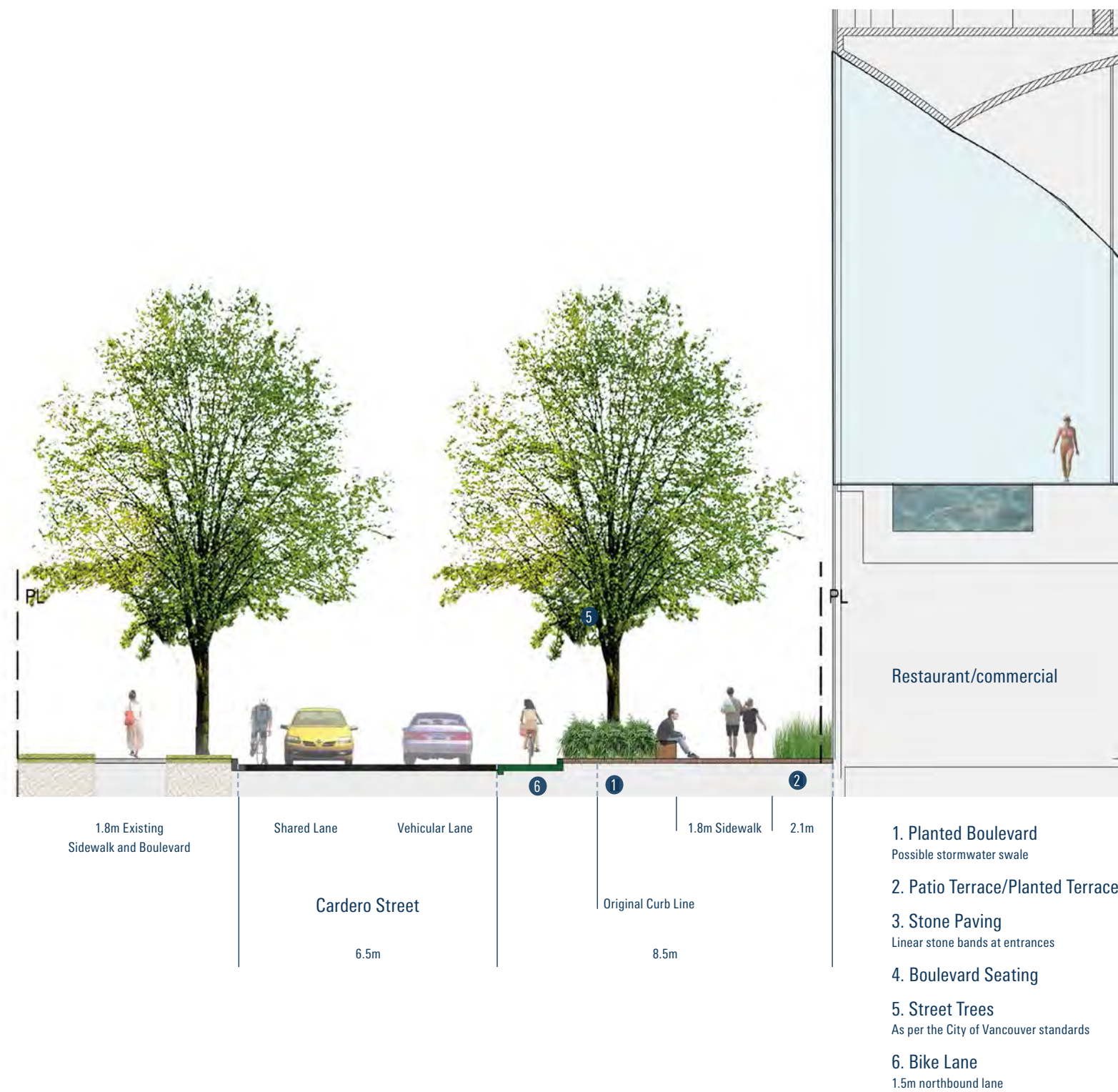
**Stone Paving**  
Vale Stone

### Design Intention

Normalize Alberni Street sidewalk by providing a continuous 1.8m sidewalk. Providing the COV standard tree surround at tree planting. Replace unhealthy Alberni Street trees with a species appropriate for streetscape planting.



# Cardero Street



Boulevard Seating



Patio Terrace/  
Planted Terrace



Planted Boulevard



Planted Boulevard



Planted Boulevard



Planted Boulevard

## Design Intention

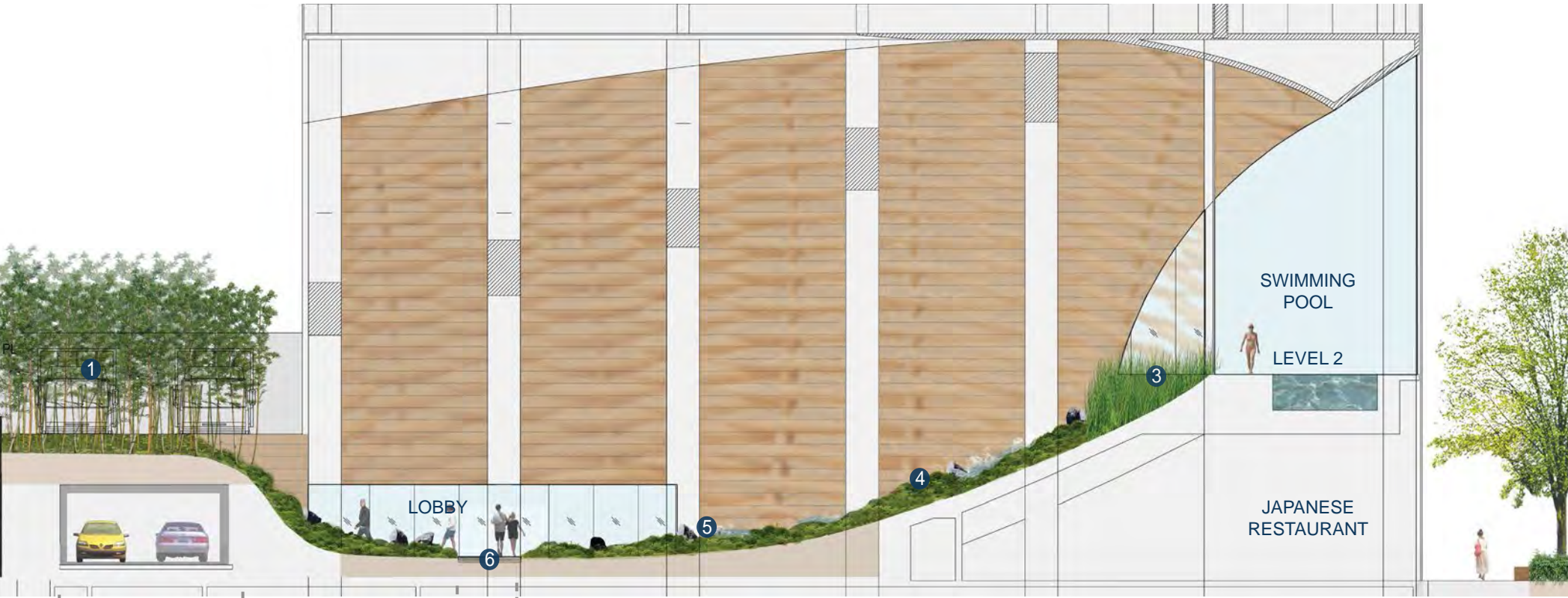
Create 'Cardero Stroll' by removing one parking lane and adding a bike lane, wide planted boulevard, public seating and patio/planted terraces along the building. Replace unhealthy Cardero Street trees with a continuous row of a species appropriate for streetscape planting. Providing the COV standard tree surround at tree planting. Replace unhealthy Alberni Street trees with a species appropriate for streetscape planting.





BAMBOO GROVE + PEDESTRIAN ENTRY

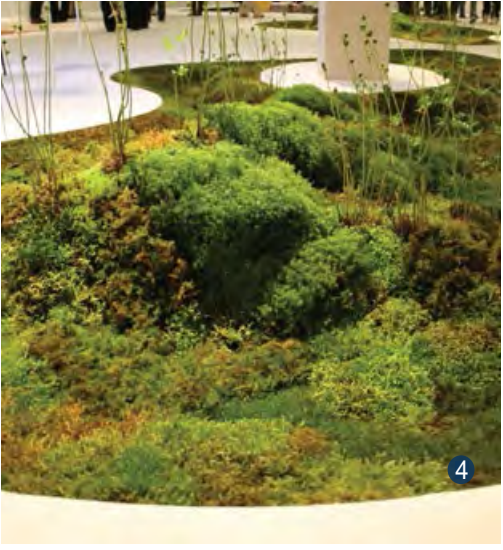
ENTRY  
PATH 1.8M  
SIDEWALK



JAPANESE GARDEN + VEHICULAR ENTRY

1.5M  
ENTRY  
PATH

CARDERO  
STROLL



- 1 BAMBOO GROVE**  
*Yellow Bamboo - Phyllostachys 'Babusoides'*
- 2 WATER FEATURE**
- 3 WATER PLANTING**  
*Equisetum*
- 4 MOSS AND BOULDER CARPET**  
*Cedar Moss and groundcovers*
- 5 LOW BOULDERS**
- 6 STONE PAVING**  
*Vale Stone*

1550 ALBERNI STREET

Westbank Projects Corp.  
*Developer*

Peterson  
*Development Partner*

Kengo Kuma Architects and Associates  
*Design Architect*

Merrick Architecture  
*Architect of Record*

James K.M. Cheng Architects  
*Rezoning and Public Realm Consultant*

PFS Studio  
*Landscape Architect*

Gloman Simpson Consulting Engineers  
*Structural Engineer*

Sterling Cooper Consultants Inc.  
*Mechanical Engineer*

Nemetz (S/A) & Associates Ltd.  
*Electrical Engineer*



Revision No.	Description	Date
--------------	-------------	------

Issue	Issue Date
---	---
---	---
---	---
---	---
---	---
---	---
---	---
---	---
---	---
---	---
---	---

Consultant



Project  
**1550 Alberni Street**  
For  
Westbank

Sheet  
Title  
**LANDSCAPE**

Drawn By	Checked
---	---
Project Number	Scale
1526	AS NOTED
Revision	Sheet Number
---	---

L000