

THE JERVIS

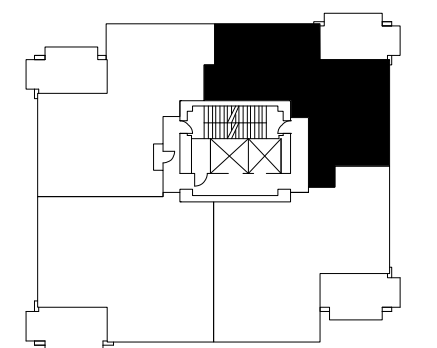
HOME 01 LEVELS 5-16

—
2 BED, 2 BATH

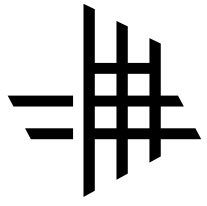
—
TOTAL
LIVING SPACE 1,178 SQ. FT

—
INDOOR SPACE 989 SQ. FT
OUTDOOR SPACE 189 SQ. FT

This east facing home takes advantage of the sunrise through the floor-to-ceiling windows, highlighting the over-height ceilings and large outdoor living space. It offers additional storage space and a linear kitchen. With views towards Stanley Park and Coal Harbour, the transition between indoor and outdoor living is seamless.



DAVIE



THE JERVIS

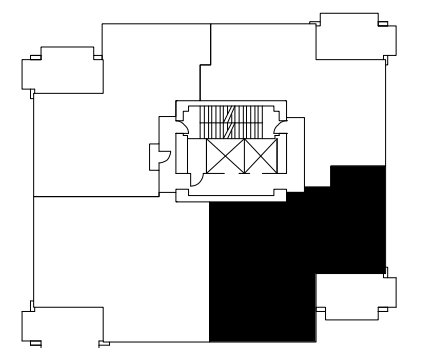
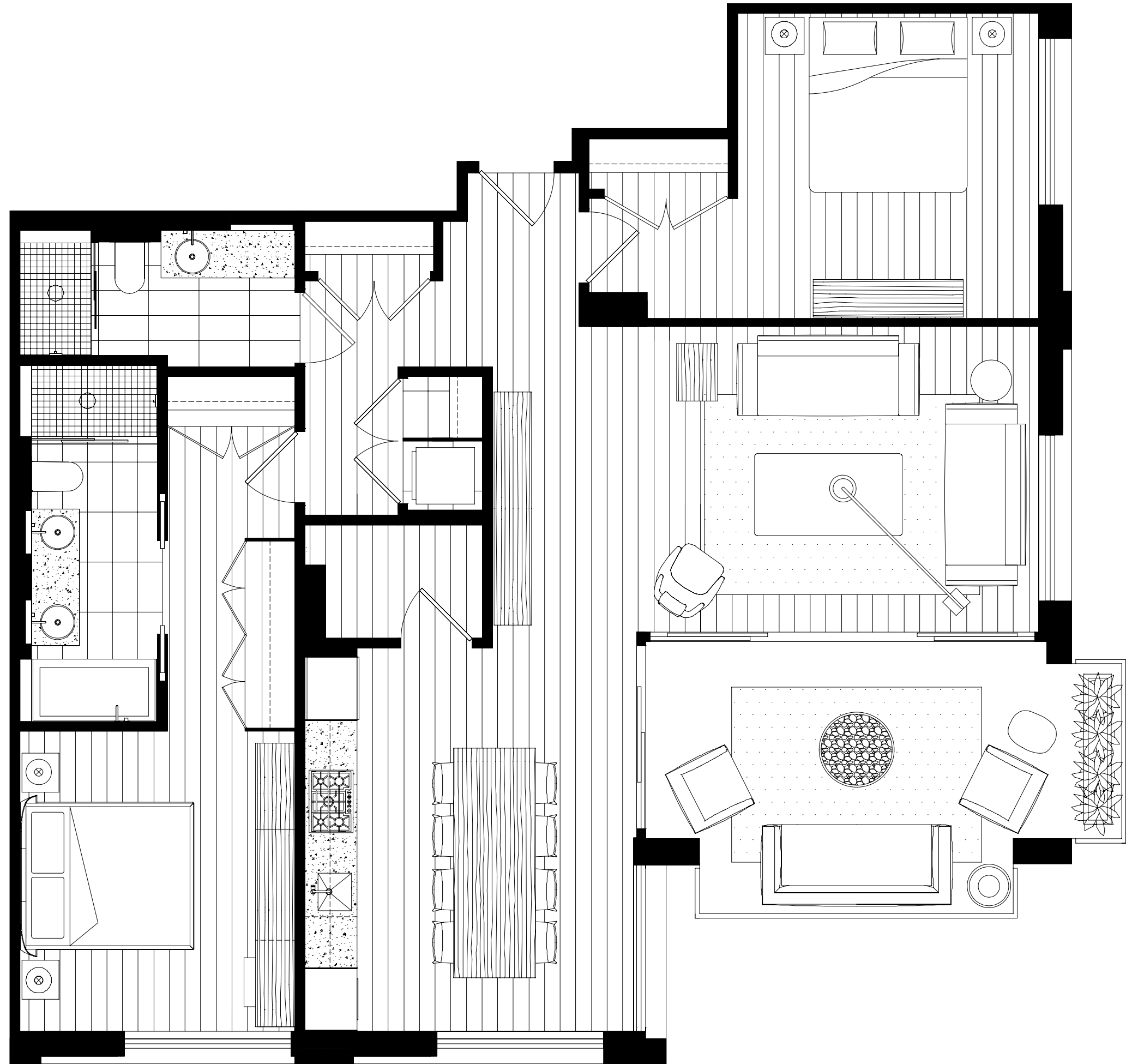
HOME 02 LEVELS 5-16

—
2 BED, 2 BATH

TOTAL
LIVING SPACE 1,450 SQ FT

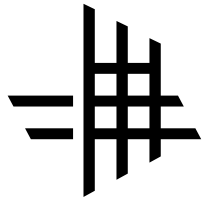
—
INDOOR SPACE 1,265 SQ FT
OUTDOOR SPACE 185 SQ FT

Intelligent space planning maximizes natural light and creates a smooth transition between indoor and outdoor living. Inside, the home offers dual millwork wardrobes and a linear kitchen with adjacent storage space that can be used as an extension of the kitchen. Outside is a generous living area with views towards Downtown Vancouver.



JERVIS

DAVIE



THE JERVIS

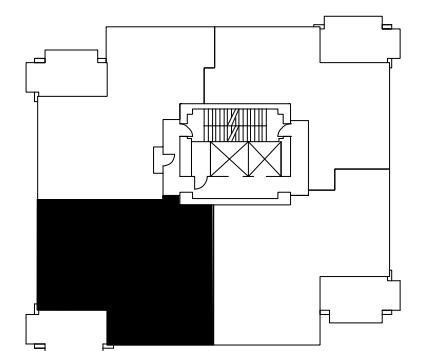
HOME 03 LEVELS 5-16

—
2 BED, 2 BATH

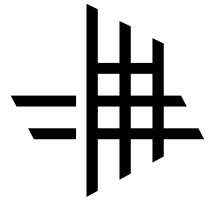
—
TOTAL
LIVING SPACE 1,491 SQ FT

—
INDOOR SPACE 1,302 SQ FT
OUTDOOR SPACE 189 SQ FT

This corner design balances functionality with a sense of space to enhance natural light and air circulation. In addition, the home includes a dual millwork wardrobe, a dedicated laundry room, and storage space adjacent to the extended linear kitchen and pantry. The large outdoor living area offers views towards English Bay and Kitsilano.



DAVIE



THE JERVIS

HOME 04 LEVELS 5-16

—
2 BED, 2 BATH

TOTAL
LIVING SPACE 1,334 SQ FT

—
INDOOR SPACE 1,149 SQ FT
OUTDOOR SPACE 185 SQ FT

The distinction between indoor and outdoor is beautifully blurred thanks to floor-to-ceiling windows and a large outdoor space. This home includes a linear kitchen, additional storage space, and views towards Stanley Park and the North Shore Mountains.

