



PLAN PHA

TOWER W32

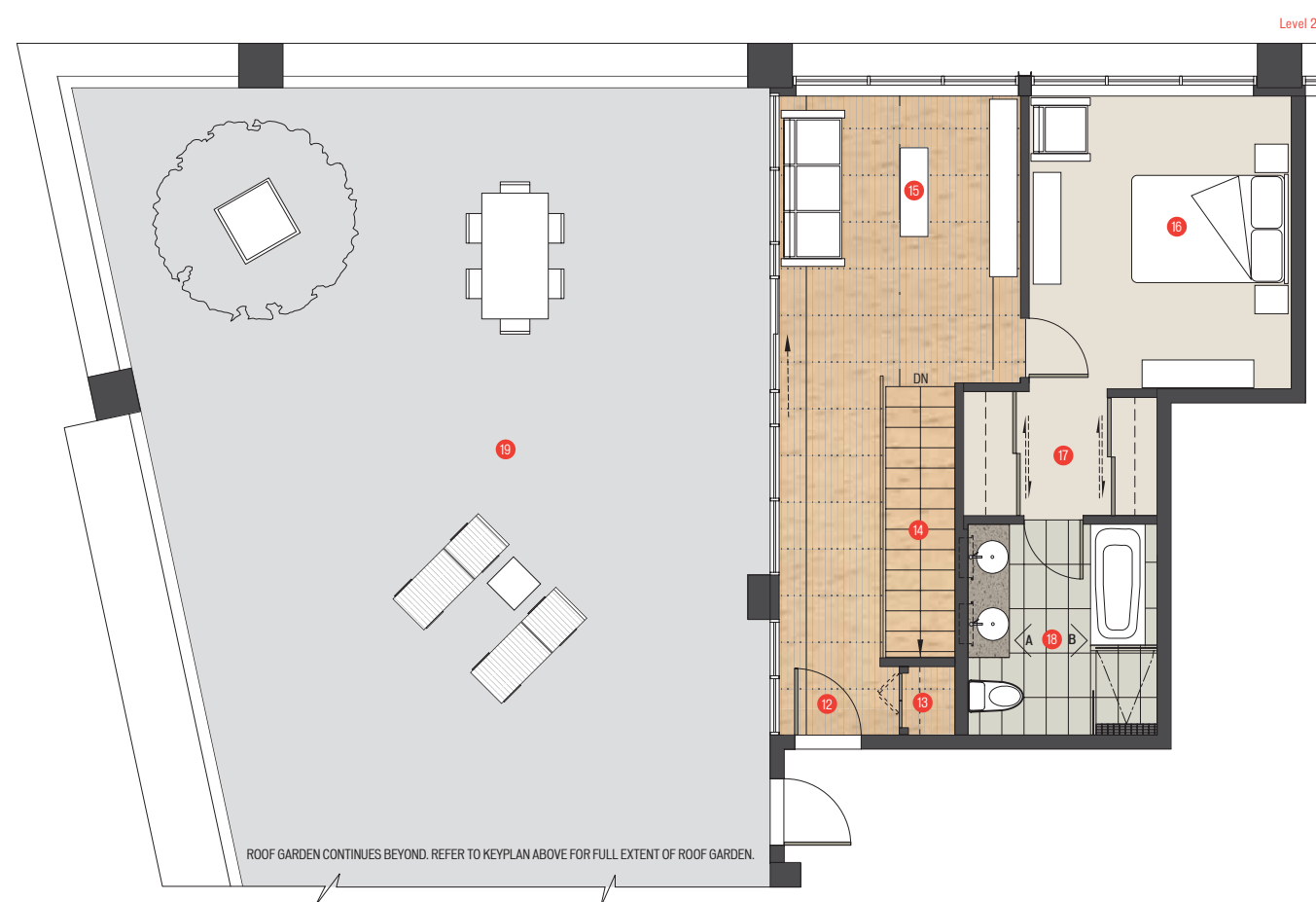
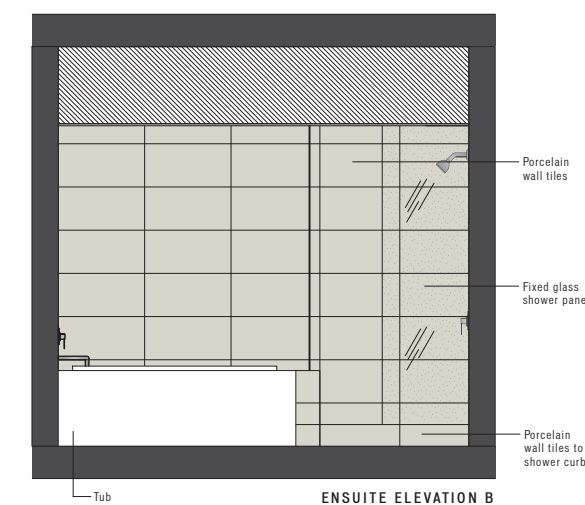
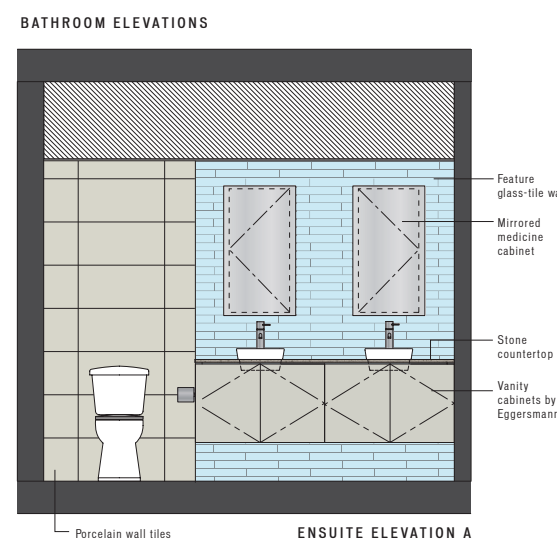
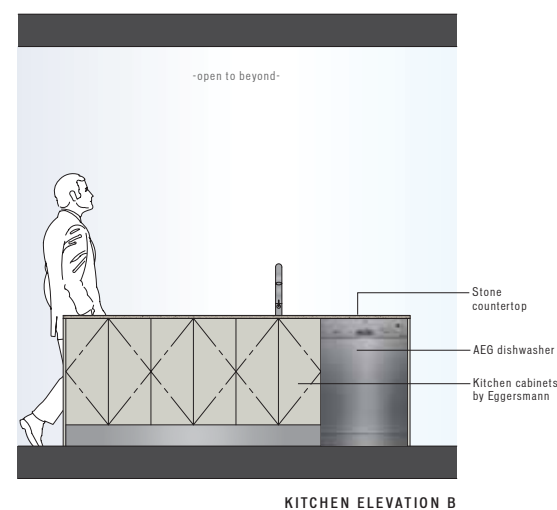
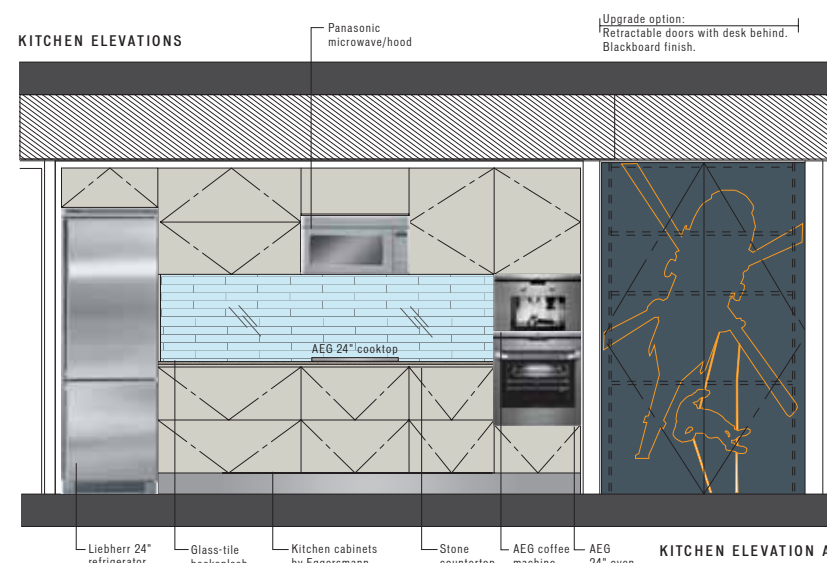
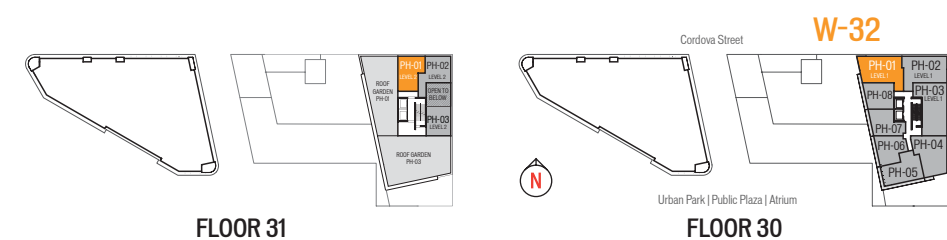
2 BEDROOM + FAMILY + OFFICE
2 BATH

1558 SF LIVING
1751 SF DECK

SPECIFICATIONS:

- Select from 10 custom designs for the suite entry door
- Exposed concrete, over-height ceilings
- Large sliding doors to bedrooms, allowing flex-space options, in most plans
- Contemporary oak parquet floors
- Optional integrated work spaces
- Polished stone kitchen countertops
- Glass feature wall tiles in a choice of five colours
- Most master baths include a separate shower and tub
- Dual flush toilet
- Large format porcelain floor and wall tiles in bathrooms
- Ensuite glass-tile feature wall, 5 colours to choose from
- Eggersmann kitchens, custom designed and finished for Woodward's
- Air-conditioning
- Appliance package includes:
 - AEG 24" cooktop (Stainless Steel)
 - AEG 24" oven (Stainless Steel)
 - AEG dishwasher (Stainless Steel)
 - AEG built-in coffee machine
 - Panasonic microwave/hoodfan (Stainless Steel)
 - Liebherr 24" refrigerator (Stainless Steel)
 - Samsung stacked washer/dryer
 - Garburator

DISCLAIMER:
 In the interest of continuing improvement, the developer reserves the right to make modifications to the product design, pricing and specifications without notice. Square footages are approximate and may vary. E.&O.E.



- Level 1**
 - 1 Entry / Foyer [FL-30]
 - 2 Stairs
 - 3 Coat Closet
 - 4 Kitchen
 - 5 Desk [upgrade option]
 - 6 Deck
 - 7 Living
 - 8 Dining
 - 9 Closet
 - 10 Bedroom-2
 - 11 Bathroom-2
- Level 2**
 - 12 Exit [FL-31]
 - 13 Closet
 - 14 Stairs
 - 15 Family
 - 16 Master Bedroom
 - 17 Walk-in Closet
 - 18 Ensuite
 - 19 Roof Garden

