



# PLAN PHB

TOWER W32

2 BEDROOM + FAMILY + OFFICE  
2.5 BATH

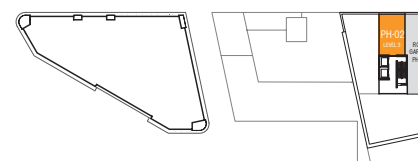
2465 SF LIVING  
1561 SF DECK

## SPECIFICATIONS:

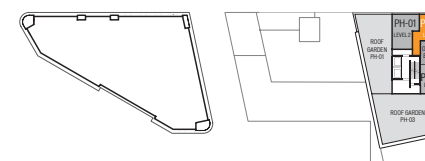
- Select from 10 custom designs for the suite entry door
- Exposed concrete, over-height ceilings
- Large sliding doors to bedrooms, allowing flex-space options, in most plans
- Contemporary oak parquet floors
- Optional integrated work spaces
- Polished stone kitchen countertops
- Glass feature wall tiles in a choice of five colours
- Most master baths include a separate shower and tub
- Dual flush toilet
- Large format porcelain floor and wall tiles in bathrooms
- Ensuite glass-tile feature wall, 5 colours to choose from
- Eggersmann kitchens, custom designed and finished for Woodward's
- Air-conditioning
- Appliance package includes:
  - AEG 24" cooktop (Stainless Steel)
  - AEG 24" oven (Stainless Steel)
  - AEG dishwasher (Stainless Steel)
  - AEG built-in coffee machine
  - Panasonic microwave/hoodfan (Stainless Steel)
  - Liebherr 24" refrigerator (Stainless Steel)
  - Samsung stacked washer/dryer
  - Garburator

## DISCLAIMER:

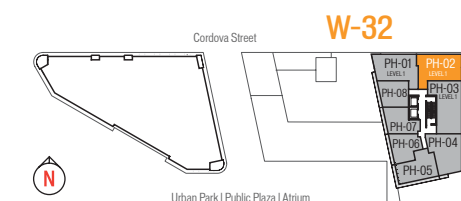
In the interest of continuing improvement, the developer reserves the right to make modifications to the product design, pricing and specifications without notice. Square footages are approximate and may vary. E & O.E.



FLOOR 32

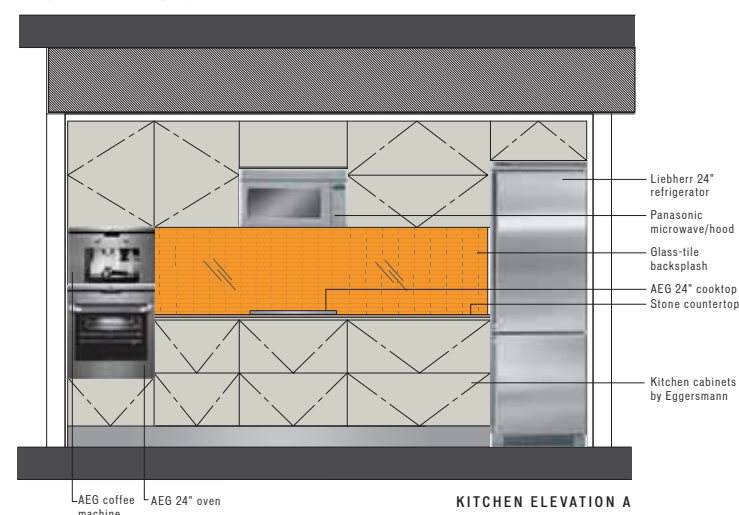


FLOOR 31

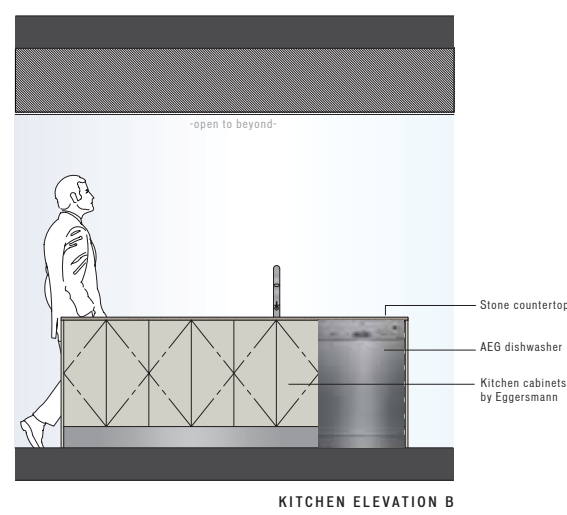


FLOOR 30

## KITCHEN ELEVATIONS

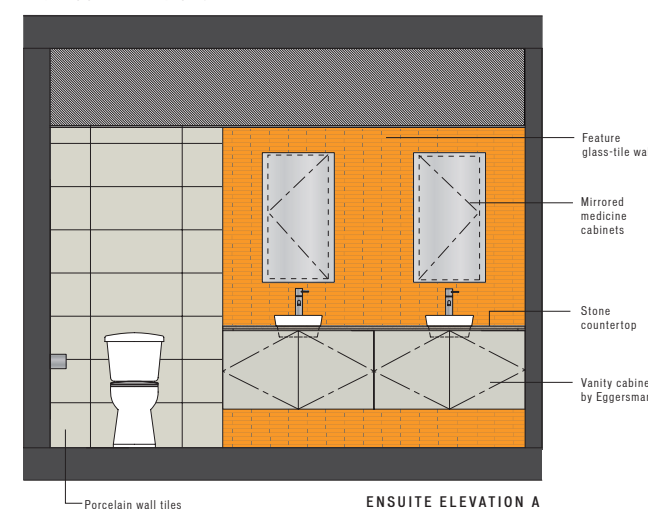


KITCHEN ELEVATION A

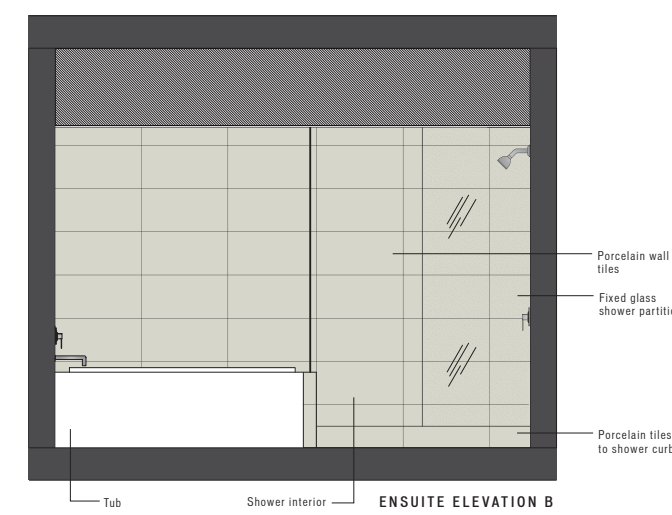


KITCHEN ELEVATION B

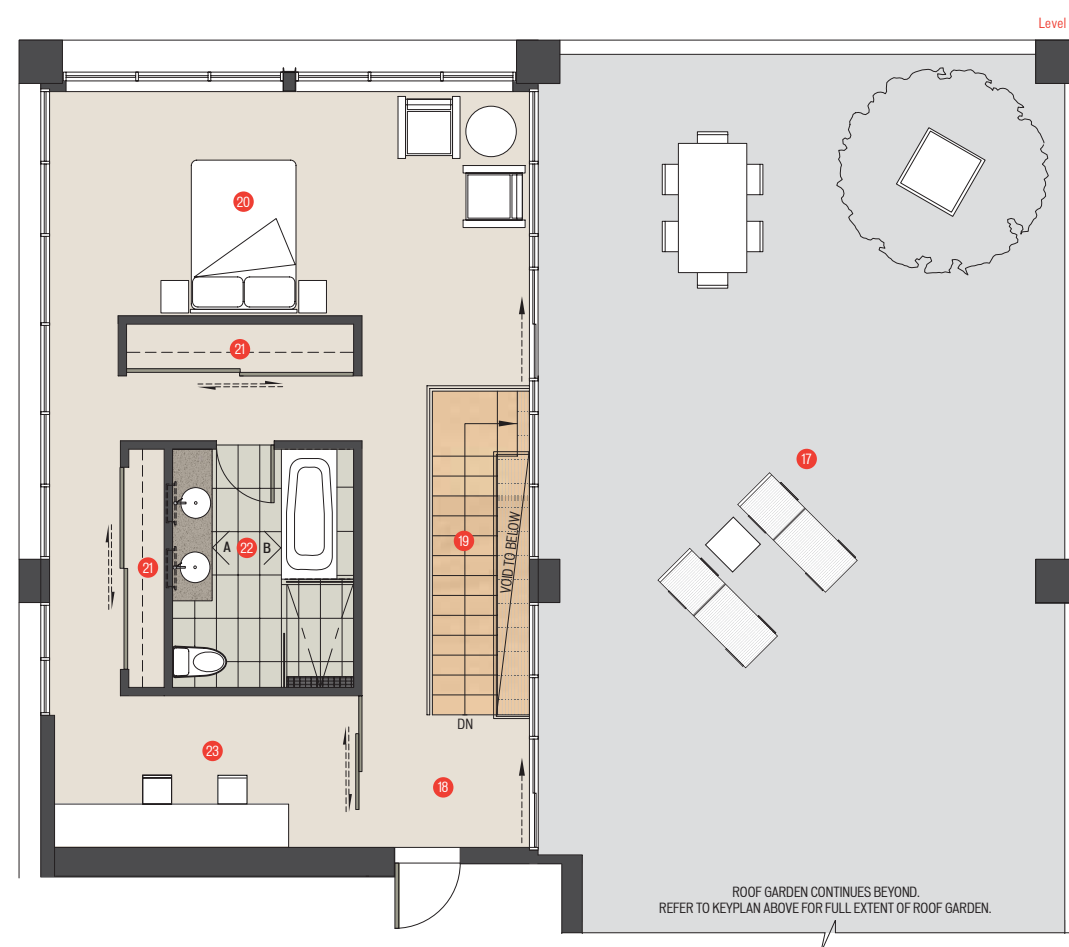
## BATHROOM ELEVATIONS



ENSUITE ELEVATION A



ENSUITE ELEVATION B



- Level 3
- 17 Roof Garden
  - 18 Exit [FL-32]
  - 19 Stairs
  - 20 Master Bedroom
  - 21 Closet
  - 22 Ensuite-1
  - 23 Office / Den

- Level 2
- 10 Exit [FL-31]
  - 11 Stairs to level 3
  - 12 Laundry
  - 13 Ensuite-2
  - 14 Closet
  - 15 Bedroom-2
  - 16 Stairs to level 2

- Level 1
- 1 Entry / Foyer [FL-30]
  - 2 Coat Closet
  - 3 Closet
  - 4 Kitchen
  - 5 Dining
  - 6 Living
  - 7 Stairs
  - 8 Family
  - 9 Bathroom-3

SCALE  
0 1 2 3 4 5 10 FT