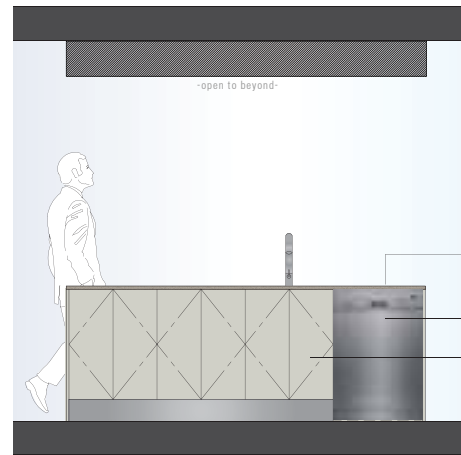


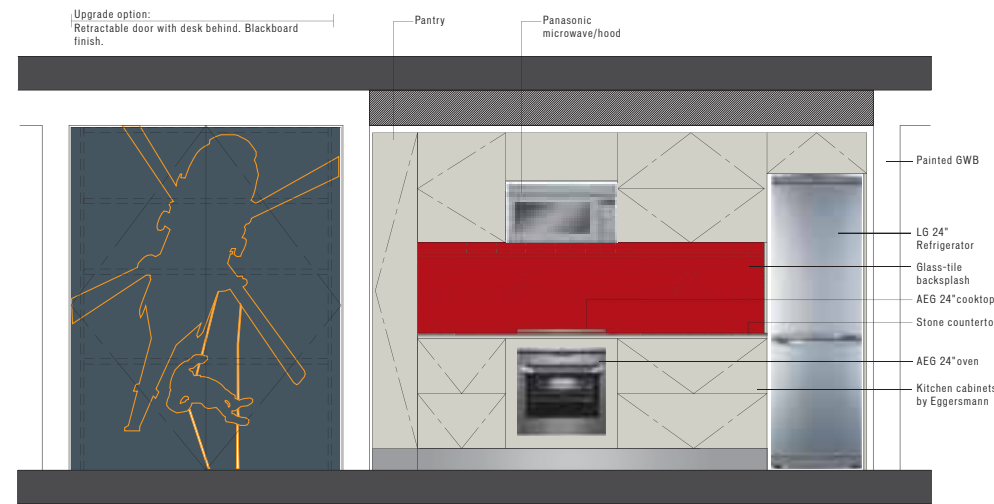
**KITCHEN ELEVATIONS SCALE: 1/2" = 1'0"**



KITCHEN SECTION A



KITCHEN ELEVATION B



KITCHEN ELEVATION C



**PLAN E**

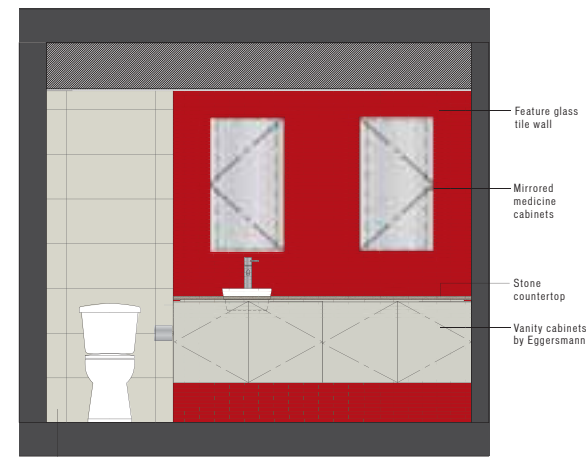
**TOWER W32**

1 BEDROOM  
1 BATH  
718 SF LIVING  
234 SF DECK

**SPECIFICATIONS:**

- Select from 10 custom designs for the suite entry door
- Exposed concrete, over-height ceilings
- Large sliding doors to bedrooms, allowing flex-space options, in most plans
- Tilo-patterned oak floors
- Optional integrated work spaces
- Polished stone kitchen countertops
- Full-height glass-tile kitchen backsplash, 5 colours to choose from
- Most master baths include a separate shower and tub
- Dual flush toilet
- Large format porcelain floor and wall tiles in bathrooms
- Ensuite glass-tile feature wall, 5 colours to choose from
- Eggersmann kitchens, custom designed and finished for Woodward's
- Appliance package includes:  
AEG 24" cooktop (Stainless Steel)  
AEG 24" oven (Stainless Steel)  
AEG dishwasher (Stainless Steel)  
Panasonic microwave/hoodfan (Stainless Steel)  
LG 24" titanium finish refrigerator  
Samsung stacked washer/dryer  
Garburator

**BATHROOM ELEVATIONS SCALE: 1/2" = 1'0"**

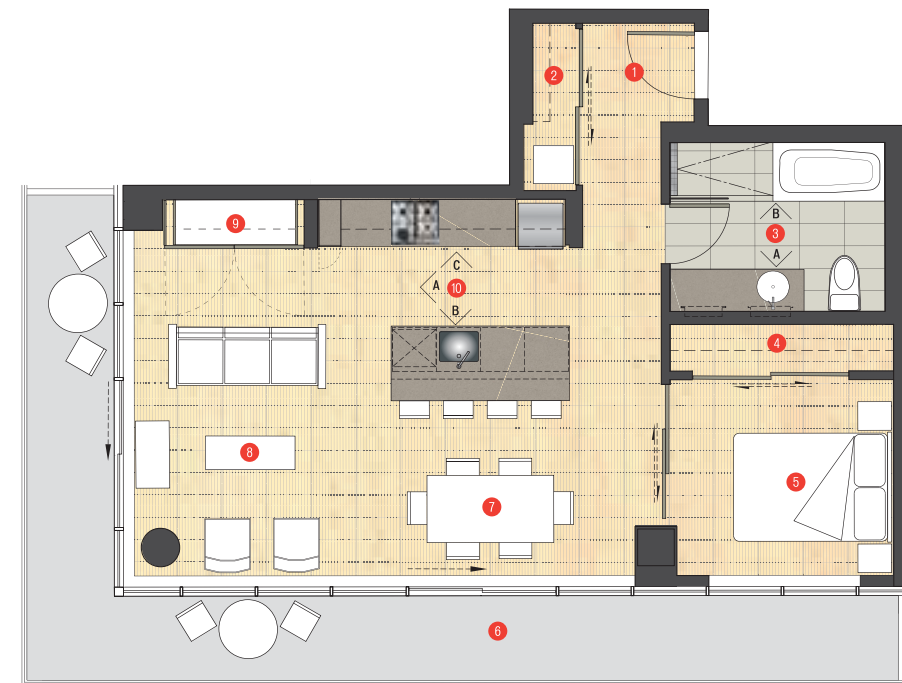


BATHROOM ELEVATION A



BATHROOM ELEVATION B

- 1 Entry / Foyer
- 2 Laundry / Coat Closet
- 3 Bathroom
- 4 Closet
- 5 Bedroom
- 6 Deck
- 7 Dining
- 8 Living
- 9 Desk (Upgrade option)
- 10 Kitchen



**DISCLAIMER:**  
In the interest of continuing improvement, the developer reserves the right to make modifications to the product design, pricing and specifications without notice. Square footages are approximate and may vary, E.&O.E.