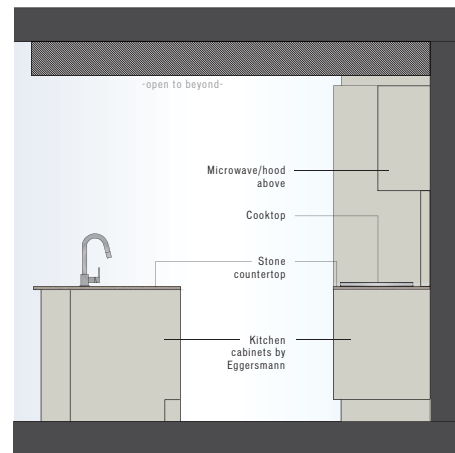
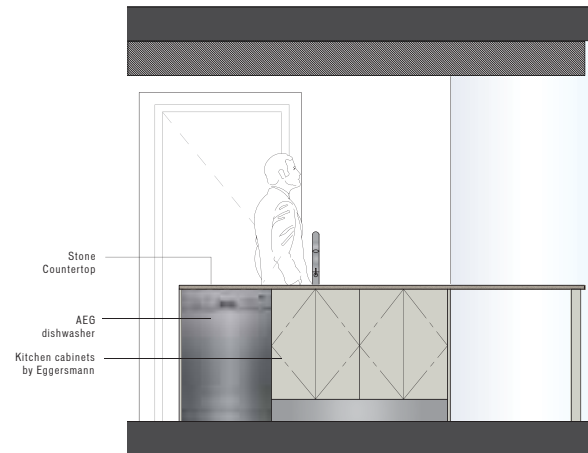


KITCHEN ELEVATIONS SCALE: 1/2" = 1'0"



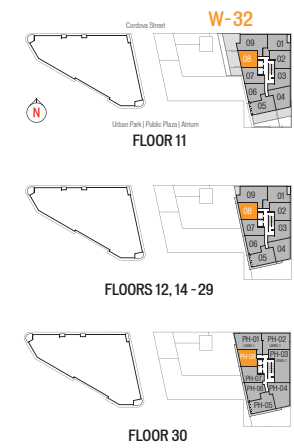
KITCHEN SECTION A



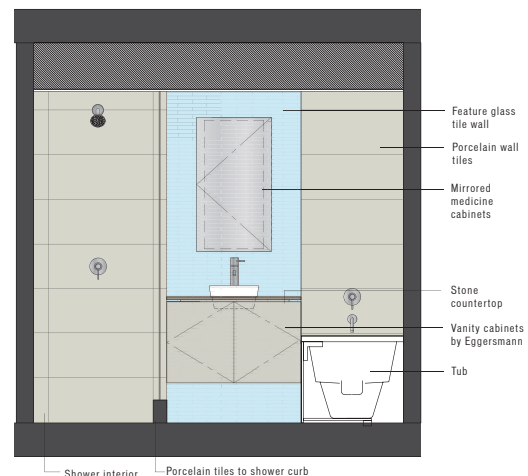
KITCHEN ELEVATION B



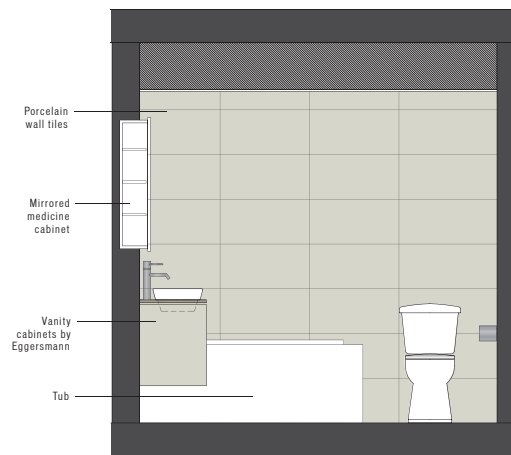
KITCHEN ELEVATION C



BATHROOM ELEVATIONS SCALE: 1/2" = 1'0"

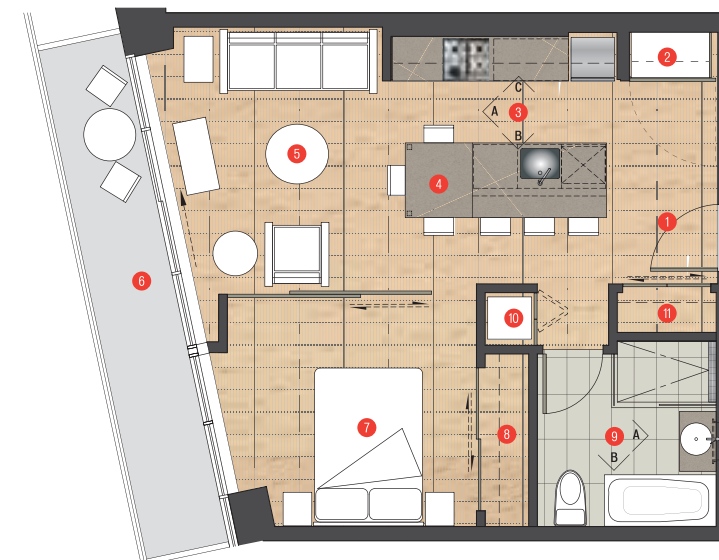
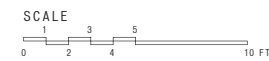


BATHROOM ELEVATION A



BATHROOM ELEVATION B

- 1 Entry / Foyer
- 2 Desk (upgrade option)
- 3 Kitchen
- 4 Eating Bar
- 5 Living
- 6 Deck
- 7 Bedroom
- 8 Closet
- 9 Bathroom
- 10 Laundry
- 11 Coat Closet



PLAN  
H

TOWER W32

1 BEDROOM  
1 BATH  
571 SF LIVING  
96 SF DECK

SPECIFICATIONS:

- Select from 10 custom designs for the suite entry door
- Exposed concrete, over-height ceilings
- Large sliding doors to bedrooms, allowing flex-space options, in most plans
- Tilo-patterned oak floors
- Optional integrated work spaces
- Polished stone kitchen countertops
- Full-height glass-tile kitchen backsplash, 5 colours to choose from
- Most master baths include a separate shower and tub
- Dual flush toilet
- Large format porcelain floor and wall tiles in bathrooms
- Ensuite glass-tile feature wall, 5 colours to choose from
- Eggersmann kitchens, custom designed and finished for Woodward's
- Appliance package includes:  
AEG 24" cooktop (Stainless Steel)  
AEG 24" oven (Stainless Steel)  
AEG dishwasher (Stainless Steel)  
Panasonic microwave/hoodfan (Stainless Steel)  
LG 24" titanium finish refrigerator  
Samsung stacked washer/dryer  
Garburator

DISCLAIMER:

In the interest of continuing improvement, the developer reserves the right to make modifications to the product design, pricing and specifications without notice. Square footages are approximate and may vary. E.&O.E.