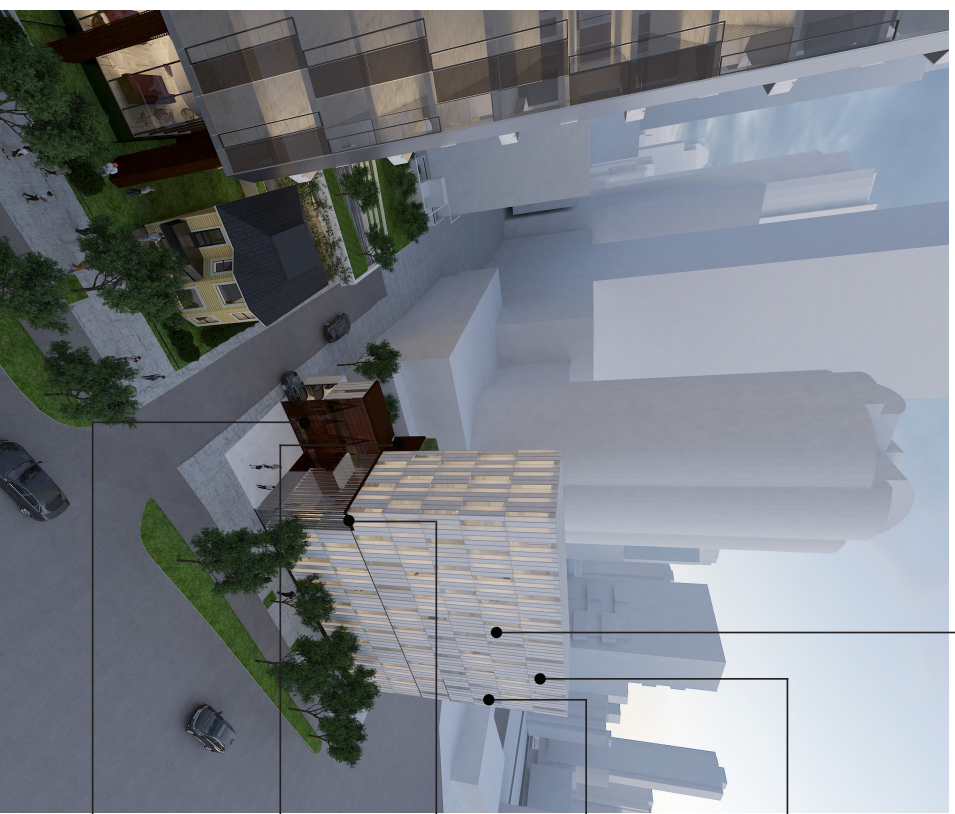


MATERIAL DESCRIPTION



WHITE METAL PANELS

These opaque panels aid in controlling the light in the interior spaces. Simultaneously, they enhance the play on pattern, adding movement to the glistening volume. 50% of the glazed facade on the West, East and South facades are made up of opaque metal panels.

TRANSPARENT GLASS (OPERABLE)

Vertical windows that create a playful pattern in the translucent facade, animating the illuminated object. 25% of the glazed facade on the West, East and South facades is transparent, allowing for views as well as opportunities for operable windows.

TRANSLUCENT GLASS

Vertical panels that diffuse natural light and create the illusion of a beacon of light when seen from the surrounding public spaces. 25% of the glazed facade on the West, East and South facades is translucent.

CORTEN HORIZONTAL BAND

The upper (private) and lower (public) volumes are separated by a delicately inset corten band. The elegant horizontal line extends across the building and is aligned with the height of the Leslie House in order to accentuate its smaller scale.

CORTEN STEEL PANELS

The movement (carving and sliding) on the northern facade expose the rough aging corten. The materiality recalls that of Hornby Tower's columns. The richness of this raw material contrasts the polished glistening nature of the glazed volumes. The movement along this facade encourages the public to engage with the building.

PERFORATED CORTEN PANELS

The perforated metal (rotating) panels visually mask the parking space, while relating to the columns of the tower, which recall the historical houses of the neighbourhood.

USING A CONTRAST OF MATERIALS TO CREATE A SIMPLE BEACON

