

### 3 BEDROOM

FLOORS 5-27

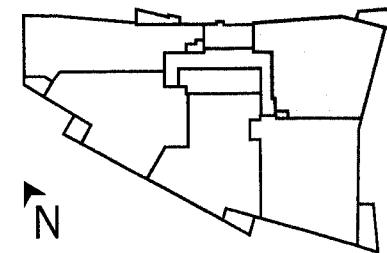
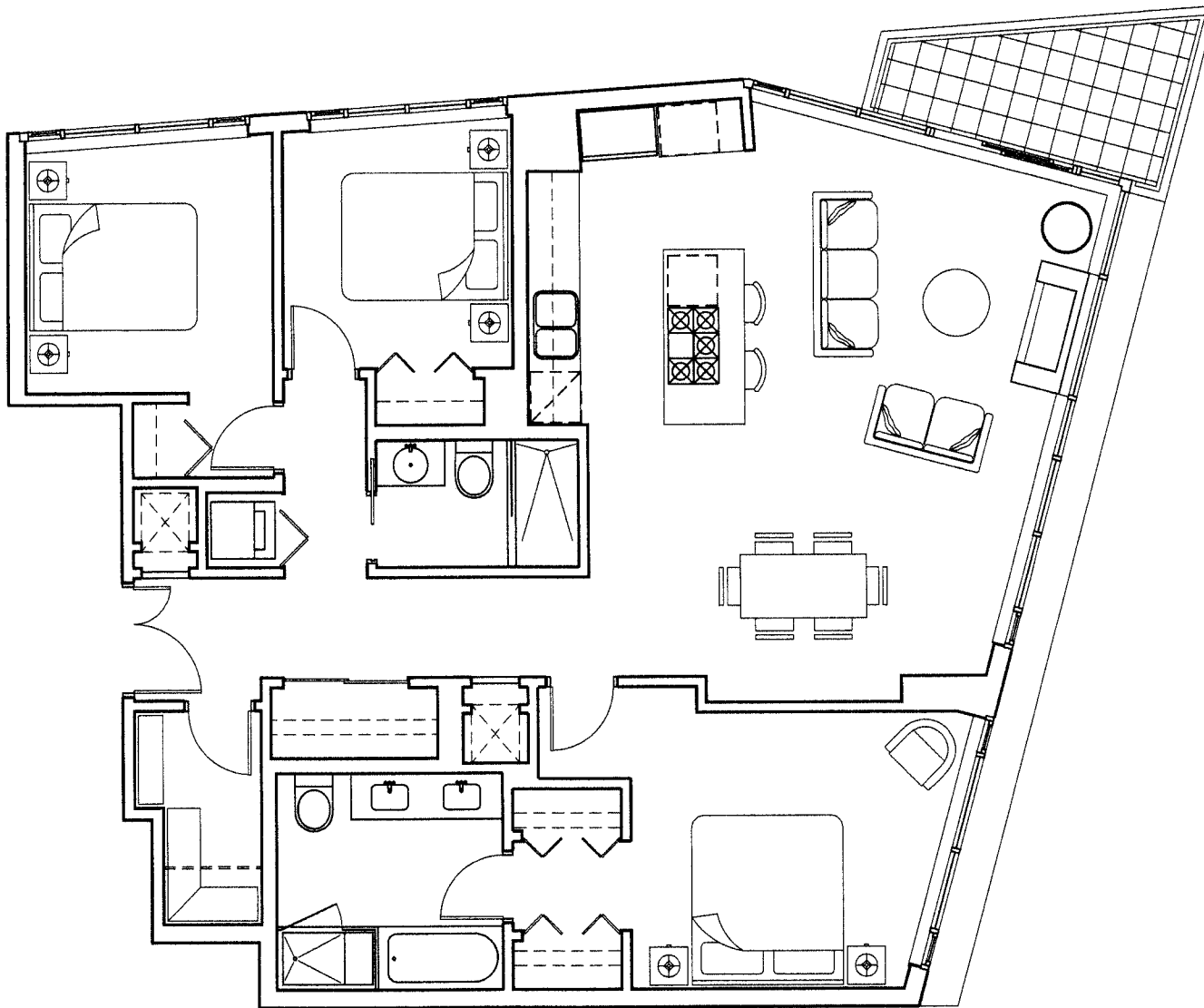
ENCLOSED AREA	1,315 sq. ft.
BALCONY	60 sq. ft.
TOTAL AREA	1,375 sq. ft.

The areas above do not apply to Suite 01 on floors 8, 9, 18, 19 & 20.

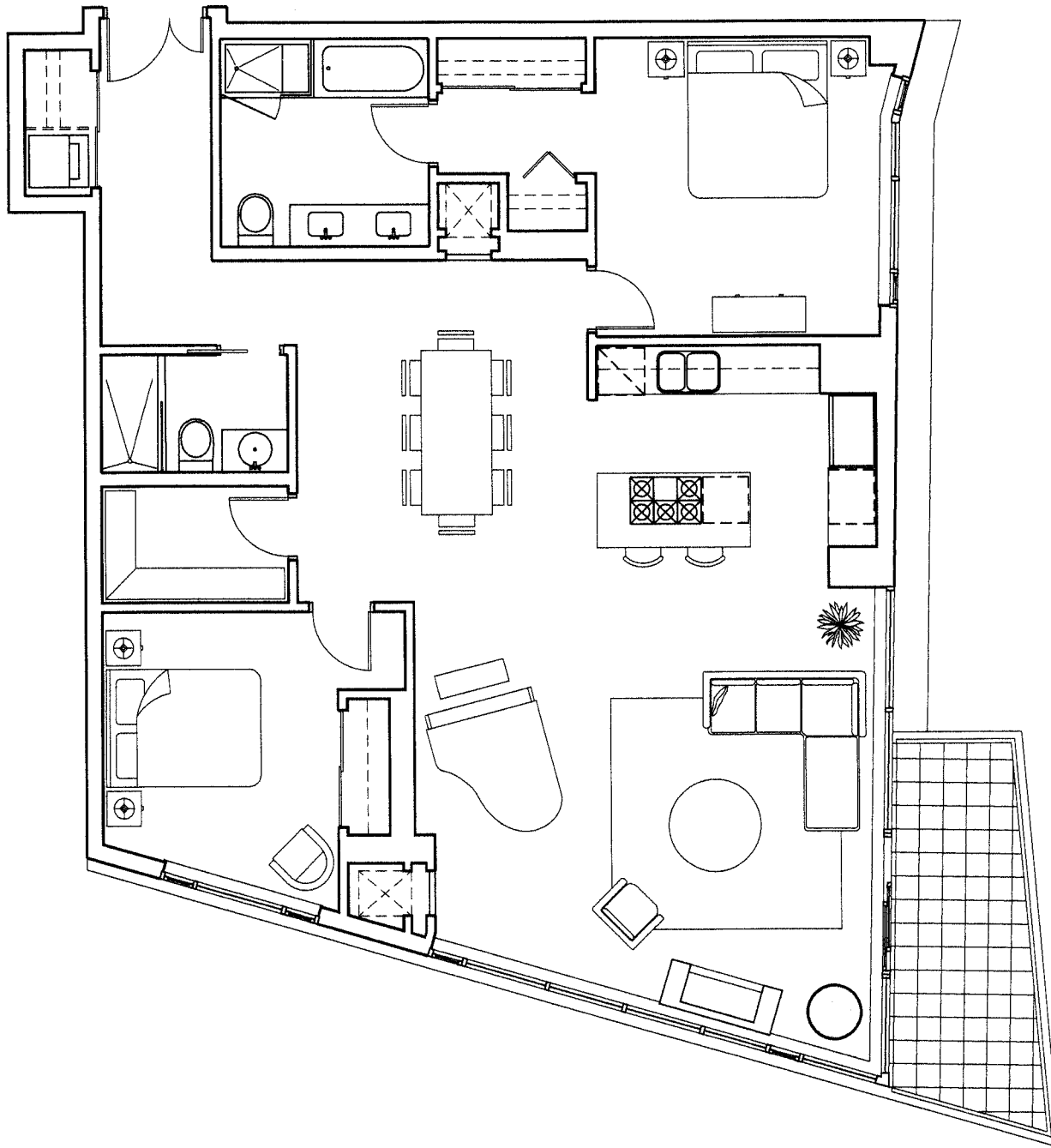
FLOORS 8, 9, 18, 19 & 20

ENCLOSED AREA	1,309 sq. ft.
BALCONY	60 sq. ft.
TOTAL AREA	1,369 sq. ft.

The double dotted line refers to the storage on floors 8, 9, 18, 19 & 20.



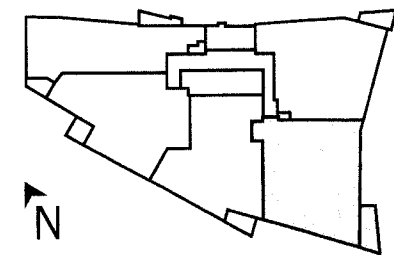
The Developer reserves the right to make modifications and changes to building design, specifications, features, ceiling heights and floor plans without notification. Street names may also be subject to change. Suite sizes are computed to the outside face of exterior walls, the outside face of walls adjacent to common areas and to the centerline of walls common to other suites. Measurements for exterior balconies and terraces are computed from the outside face of exterior walls to slab edges or the outside face of parapets. Room sets illustrated are the designer's and artist's suggestions of finishing and decorating style. All illustrations reflect the artist's interpretation of the project and do not take into account the neighbouring buildings, physical structures, streets and landscape. These matters will be governed entirely by the terms of the applicable purchase contract in each case.



## 2 BEDROOM

TYPICAL FLOORS 5-25

ENCLOSED AREA	1,418 sq. ft.
BALCONY	98 sq. ft.
TOTAL AREA	1,516 sq. ft.



FLAGSHIP

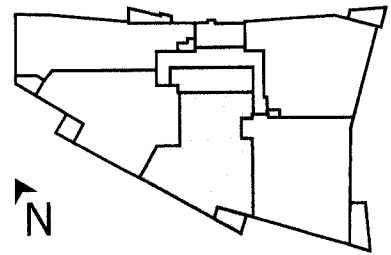
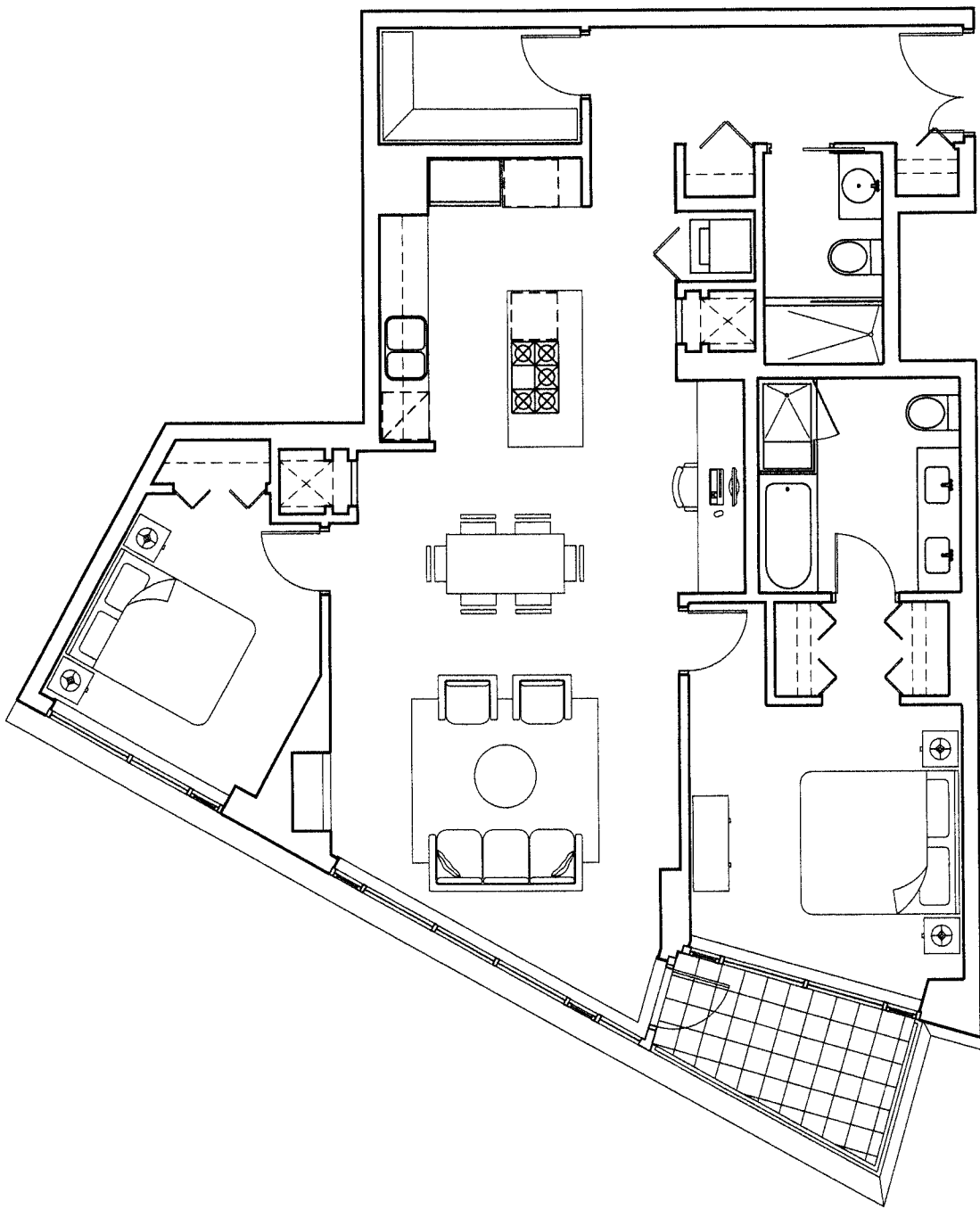
SUITE 02

The Developer reserves the right to make modifications and changes to building design, specifications, features, ceiling heights and floor plans without notification. Street names may also be subject to change. Suite sizes are computed to the outside face of exterior walls, the outside face of walls adjacent to common areas and to the centerline of walls common to other suites. Measurements for exterior balconies and terraces are computed from the outside face of exterior walls to slab edges or the outside face of parapets. Room sets illustrated are the designer's and artist's suggestions of finishing and decorating style. All illustrations reflect the artist's interpretation of the project and do not take into account the neighbouring buildings, physical structures, streets and landscape. These matters will be governed entirely by the terms of the applicable purchase contract in each case.

## 2 BEDROOM & WORKSTATION

TYPICAL FLOORS 5-25

ENCLOSED AREA	1,238 sq. ft.
BALCONY	57 sq. ft.
TOTAL AREA	1,295 sq. ft.

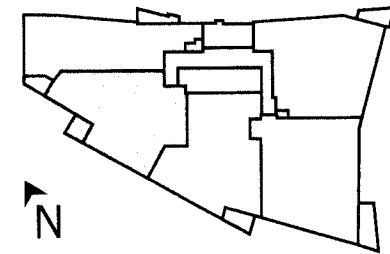
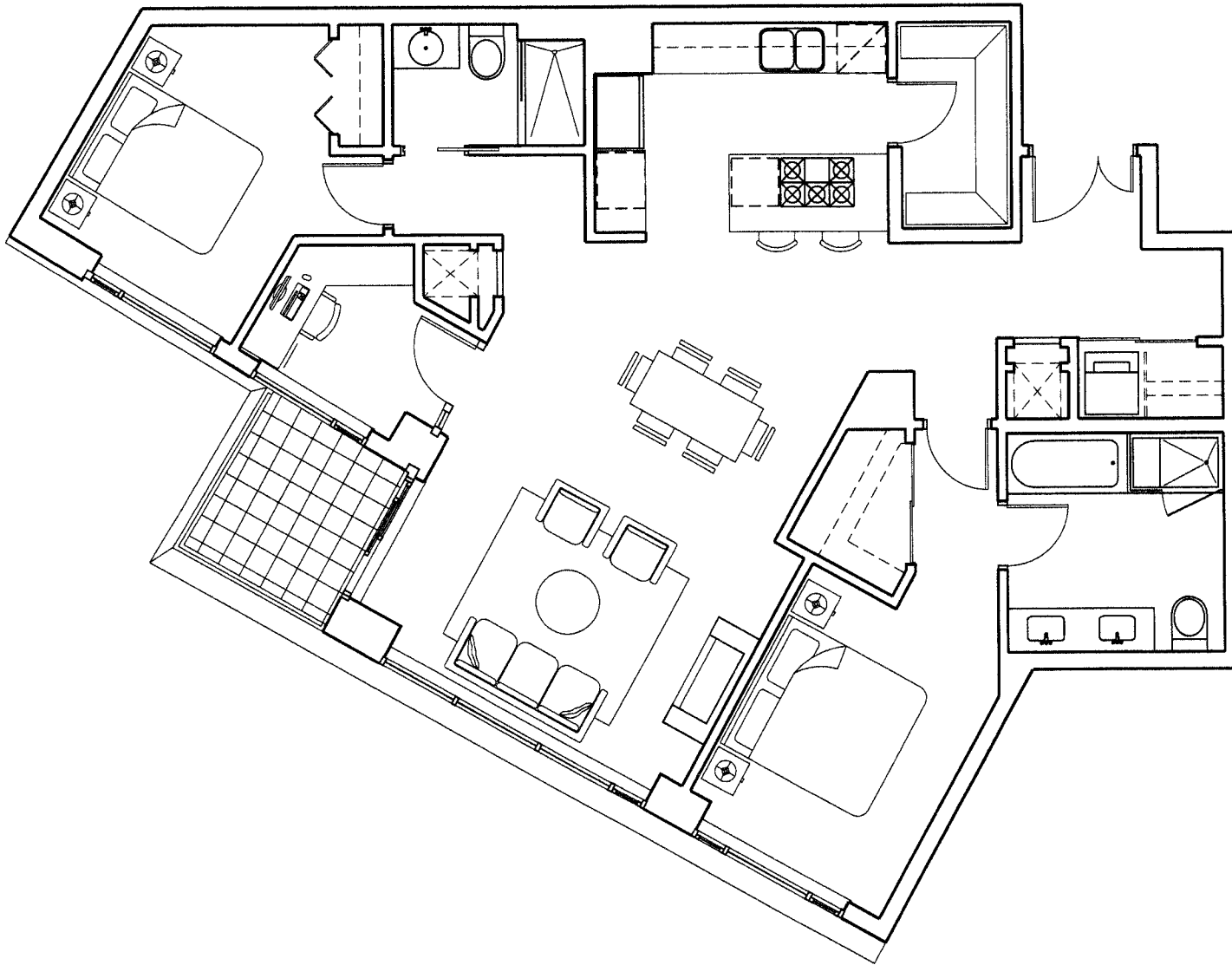


The Developer reserves the right to make modifications and changes to building design, specifications, features, ceiling heights and floor plans without notification. Street names may also be subject to change. Suite sizes are computed to the outside face of exterior walls, the outside face of walls adjacent to common areas and to the centerline of walls common to other suites. Measurements for exterior balconies and terraces are computed from the outside face of exterior walls to slab edges or the outside face of parapets. Room sets illustrated are the designer's and artist's suggestions of finishing and decorating style. All illustrations reflect the artist's interpretation of the project and do not take into account the neighbouring buildings, physical structures, streets and landscape. These matters will be governed entirely by the terms of the applicable purchase contract in each case.

## 2 BEDROOM & DEN

### TYPICAL FLOORS 5-25

ENCLOSED AREA	1,232 sq. ft.
BALCONY	53 sq. ft.
TOTAL AREA	1,285 sq. ft.

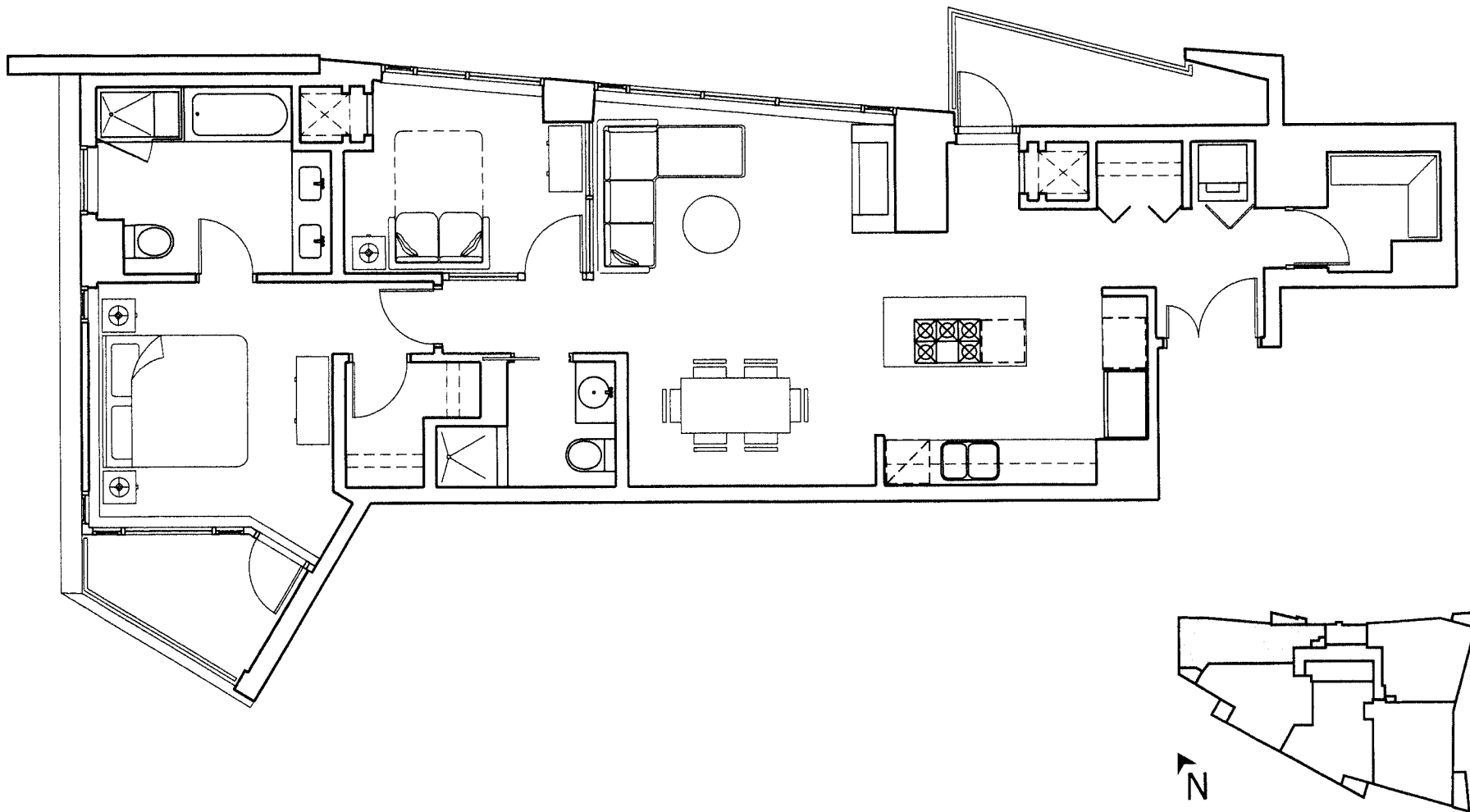


# 1 BEDROOM & GUEST ROOM

FLOORS 3-25

ENCLOSED AREA	1,055 sq. ft.
BALCONY	101 sq. ft.
TOTAL AREA	1,156 sq. ft.

This floor plan also applies to Suites 2605 and 2705.



The Developer reserves the right to make modifications and changes to building design, specifications, features, ceiling heights and floor plans without notification. Street names may also be subject to change. Suite sizes are computed to the outside face of exterior walls, the outside face of walls adjacent to common areas and to the centerline of walls common to other suites. Measurements for exterior balconies and terraces are computed from the outside face of exterior walls to slab edges or the outside face of parapets. Room sets illustrated are the designer's and artist's suggestions of finishing and decorating style. All illustrations reflect the artist's interpretation of the project and do not take into account the neighbouring buildings, physical structures, streets and landscape. These matters will be governed entirely by the terms of the applicable purchase contract in each case.