



BUILDING

- Architecture by Rafii Architects Inc. in collaboration with Richard Henry Architect Inc.
- Interiors designed by BBA Design Consultants Inc.
- Energy-efficient, sustainable and liveable building design consistent with achieving LEED gold certification.
- Grand, double-height lobby with concierge.
- Fully equipped fitness room with cardio machines and weights plus space for stretching, Pilates or yoga practice.
- Residents' lounge with entertainment room and caterers' kitchen opening to an expansive eighth floor terrace with seating, BBQ, garden plots, tool shed and children's play area.
- Extensive bike parking plus Bike Hub for DIY tune-ups and maintenance.
- Secured holding room at lobby level for added convenience on moving day.
- Secured underground parkade complete with electric vehicle parking, on-site car-sharing network and visitor parking stalls.
- Full-time resident manager.

HOMES

- Solid core entry doors with contemporary wood grain side panel.
- Smartly designed great room spaces with expansive windows.
- Year round comfort with in-suite controlled, energy efficient air-conditioning, heating and ventilation system.
- Architectural finishes include smooth-finished ceilings and flat-profile baseboards throughout.
- Flat-panel interior doors with polished stainless steel lever-style handles.
- Innovative, ecologically sensitive wide plank wood-pattern resilient flooring throughout (except bathrooms).
- Flat-panel contemporary swing doors on all closets.
- Spacious balconies or terraces for relaxed outdoor living (as per plan).
- Diffused or clear glass sliding door panels separate dens and bedrooms (as per plan).
- Generous in-suite storage rooms (as per plan).
- Stacking Whirlpool front-loading washer and dryer.
- Contemporary custom roller blinds on all exterior windows.

KITCHENS

- Contemporary white premium acrylic cabinetry with rich wood accents.
- Modern quartz countertops complemented by large-format, glazed ceramic backsplash tile for a seamless look.
- Full-height pantry with integrated stainless steel microwave (as per plan).
- Undermount stainless steel single-basin sink with DXV polished chrome pull-down faucet.
- Pull-out recycling storage under kitchen sink.
- German-engineered top-of-the-line Bosch appliance package includes:
 - Paneled bottom-mount 30" refrigerator to blend seamlessly with surrounding cabinetry.*
 - Ultra-quiet, fully integrated and paneled dishwasher in 18" or 24" width (as per plan).
 - Touch-control electric cooktop in black ceramic and glass.
 - Flush-installed, stainless steel wall oven with genuine European convection.
- Low-profile Faber hood fan.

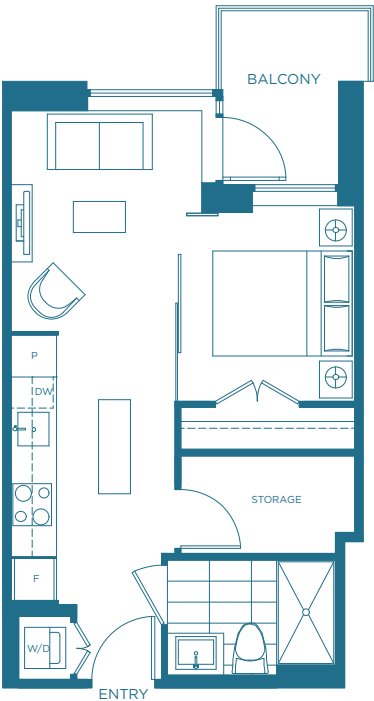
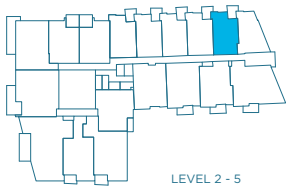
**Some kitchens feature paneled bottom-mount 24" Blomberg refrigerator (as per plan).*

SUSTAINABILITY

- Designed to LEED® Gold standards and registered with the Canada Green Building Council.
- Situated in a pedestrian and cycle-friendly location with easy access to public transit and car-sharing networks.
- Part of the Southeast False Creek Neighbourhood Energy Utility.
- Extensive landscaping includes parks, gardens and green roof systems.
- Engineered with systems for capturing and treating storm water.
- Designated electric vehicle charging stations, parking for three car share vehicles and plenty of bicycle parking.
- Smart sorting lounge for easy on-site composting and recycling.
- High-performance, double-glazed, low-E thermal windows.
- Energy-efficient, motion-controlled lighting throughout building common areas.
- In-suite, individually controlled programmable thermostat.
- Low-VOC paint used in suites and throughout common areas.

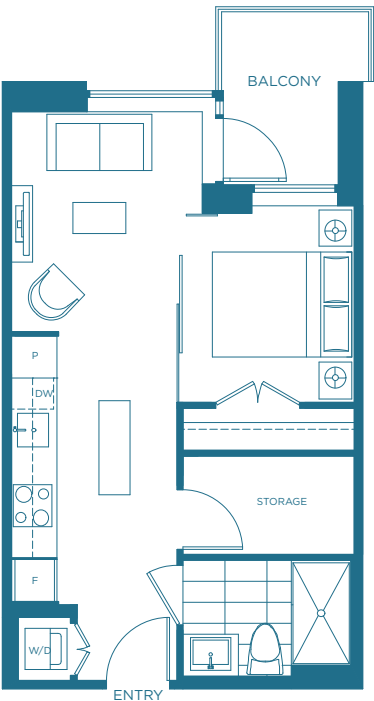
A1

ONE BEDROOM
453 SF



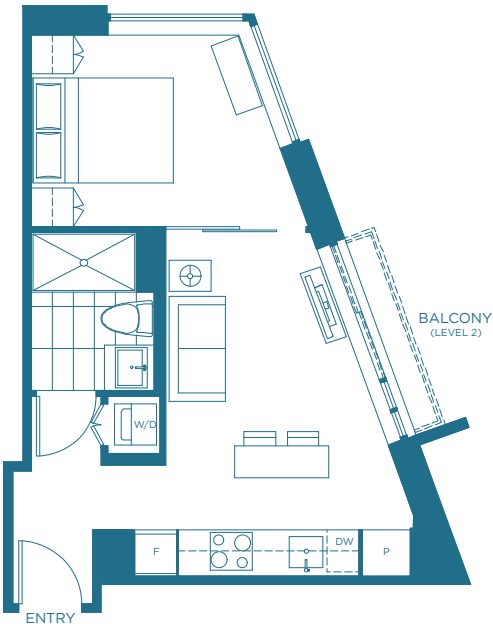
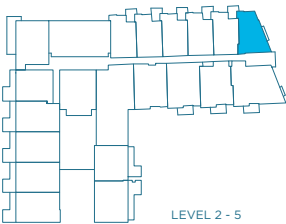
A2

ONE BEDROOM
461-455 SF



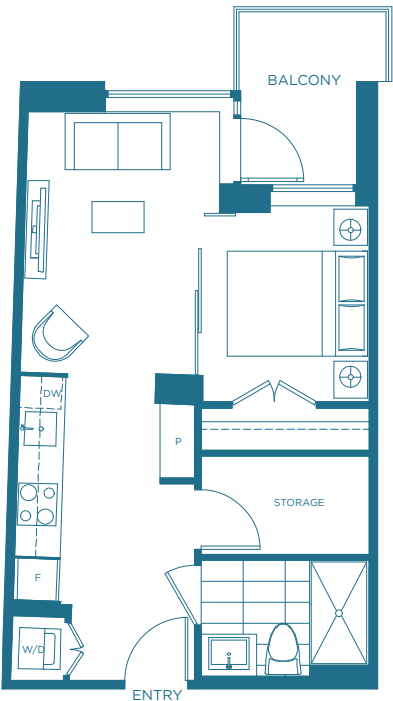
A3

ONE BEDROOM
465 SF



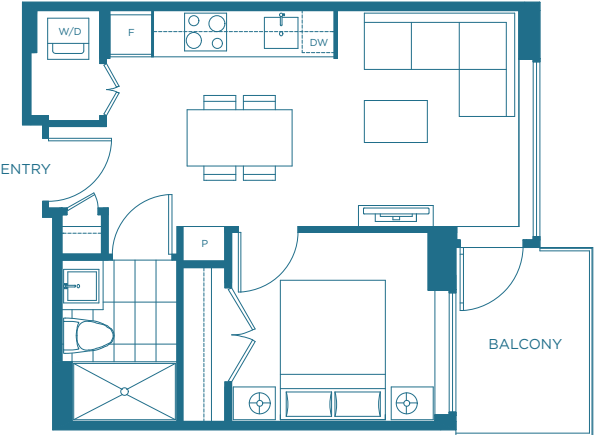
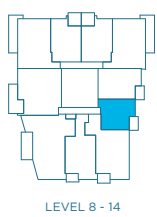
A4

ONE BEDROOM
468 SF



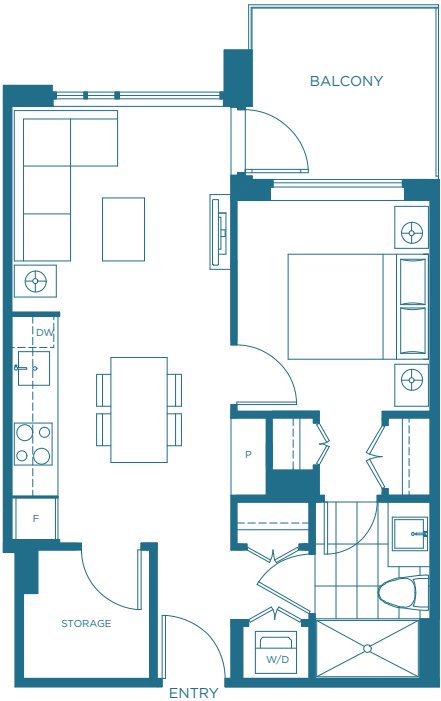
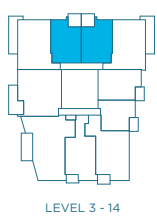
B1

ONE BEDROOM
446 SF



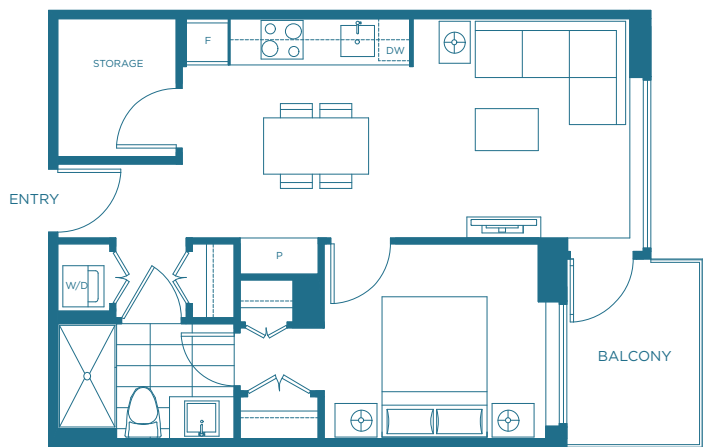
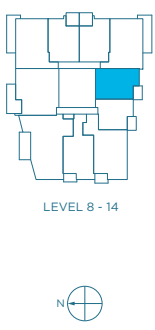
B2

ONE BEDROOM
546 SF



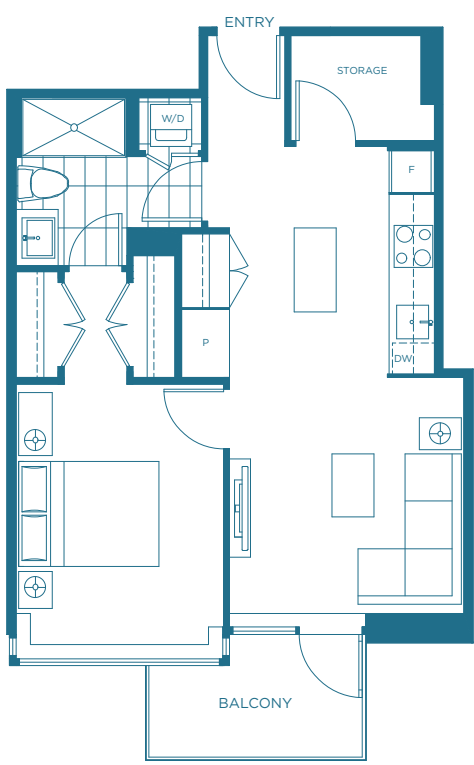
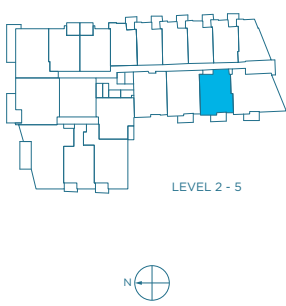
B3

ONE BEDROOM
565 SF



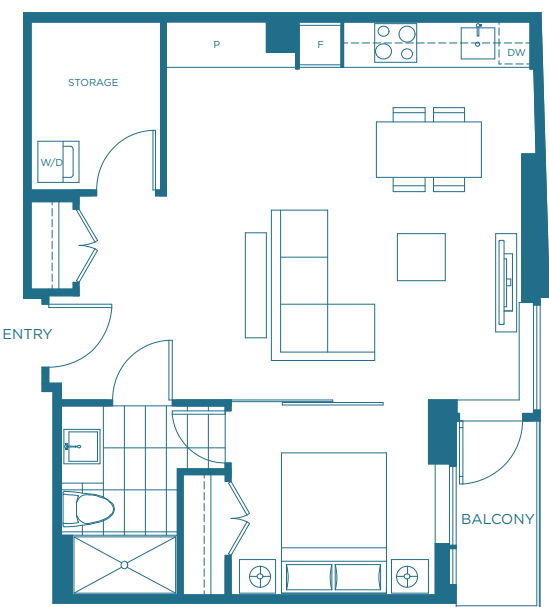
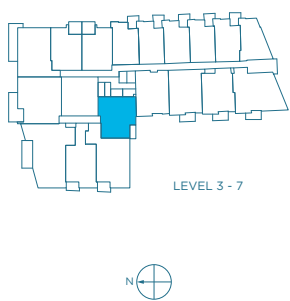
B4

ONE BEDROOM
599 SF



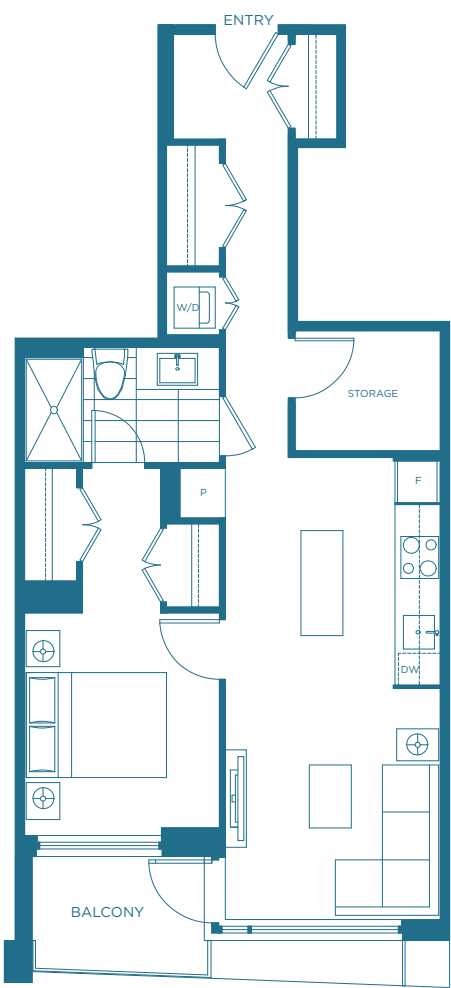
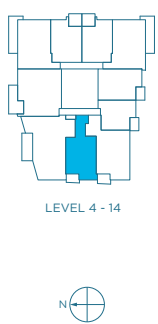
B5

ONE BEDROOM
640 SF



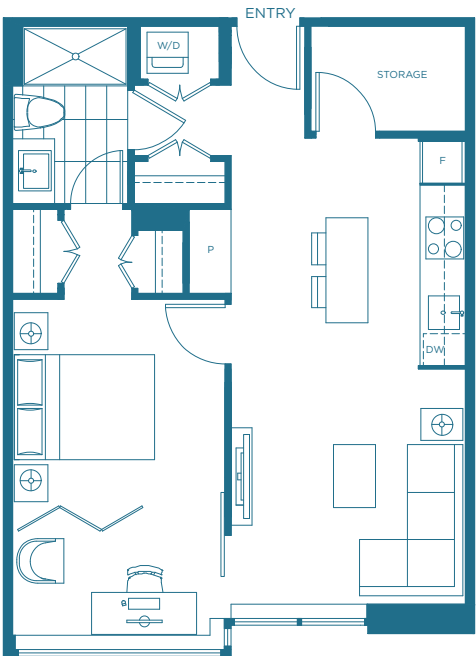
B6

ONE BEDROOM
667 SF



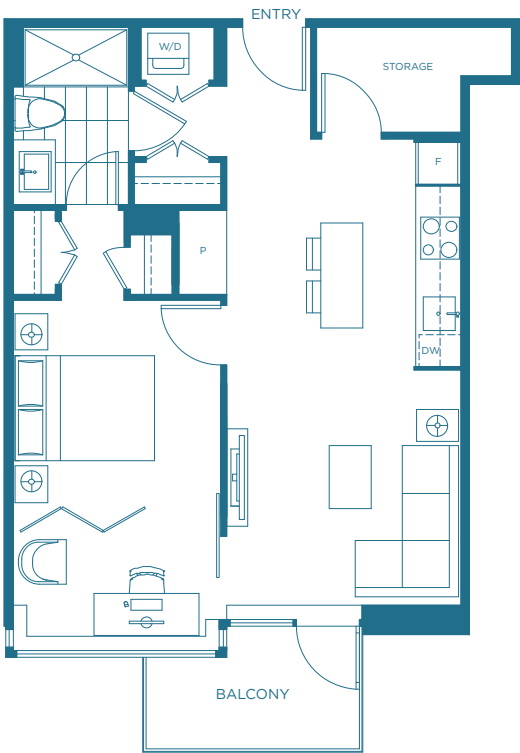
B7

ONE BEDROOM + FLEX
648 SF



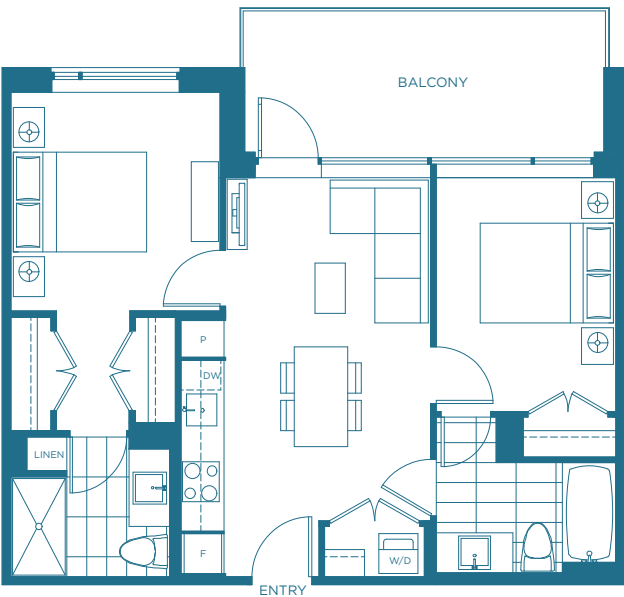
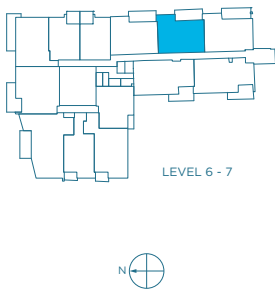
B8

ONE BEDROOM + FLEX
656 SF



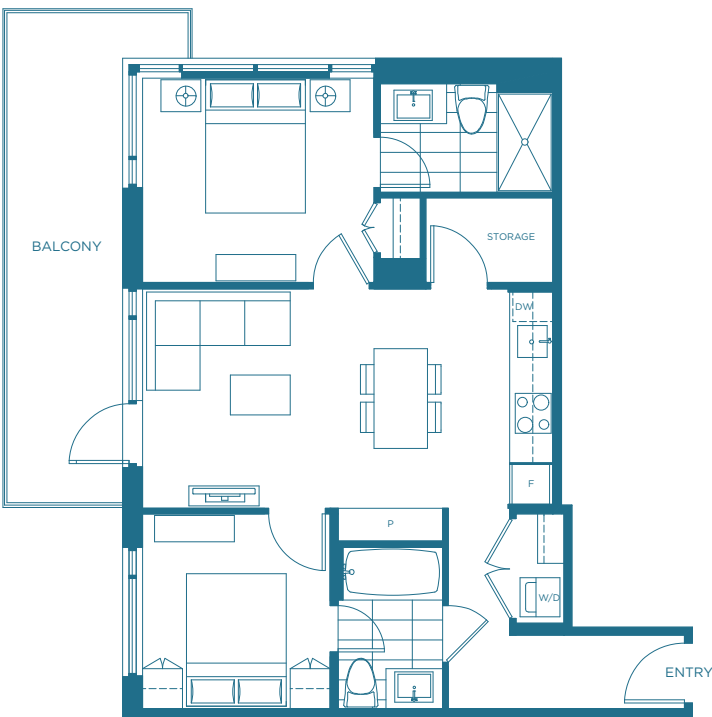
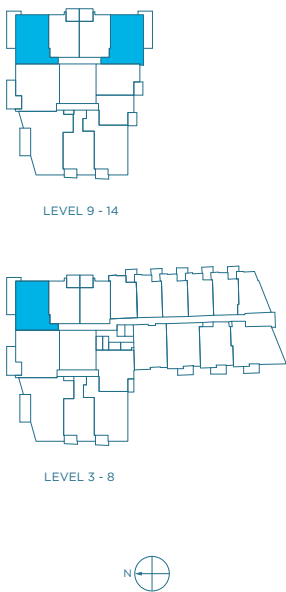
D1

TWO BEDROOM
722 SF



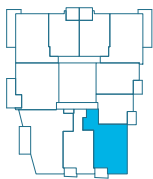
D2

TWO BEDROOM
753 SF



D3

TWO BEDROOM
830 SF

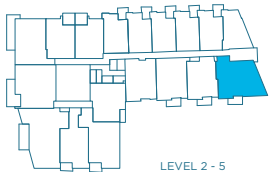


LEVEL 4 - 14



D4

TWO BEDROOM
831 SF

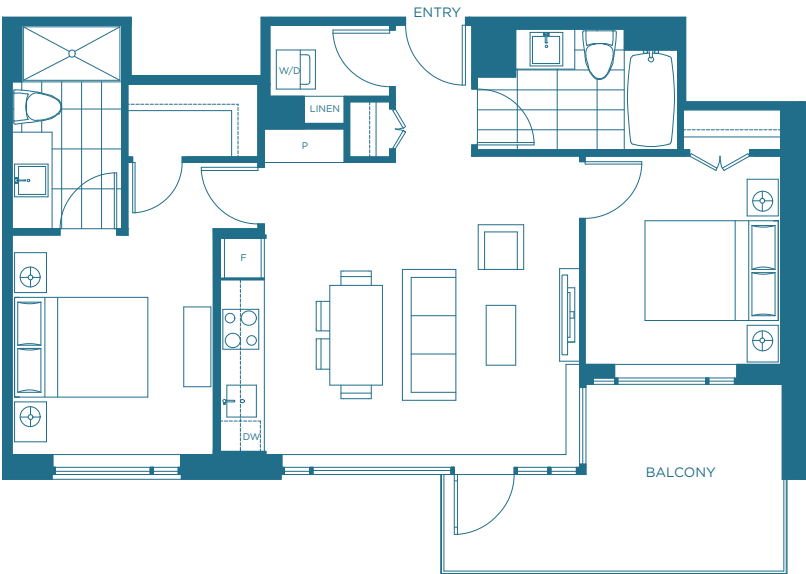
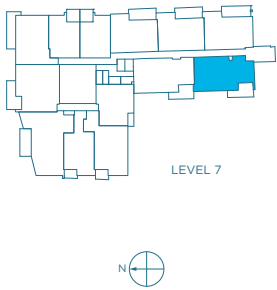


LEVEL 2 - 5



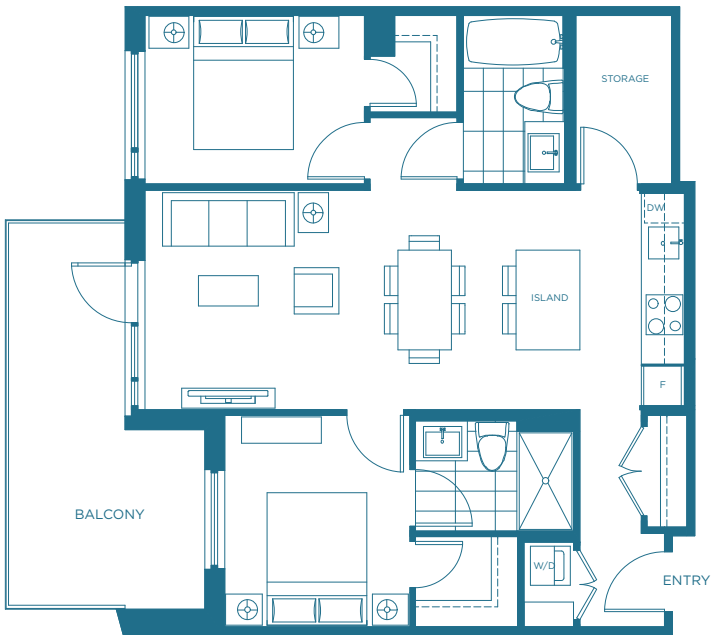
D5

TWO BEDROOM
833 SF



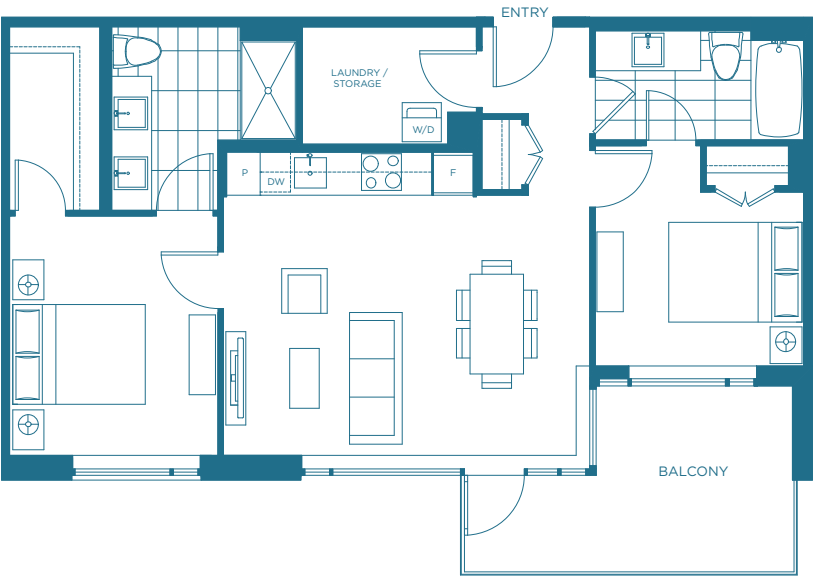
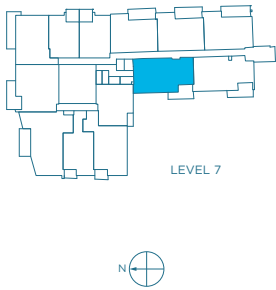
D6

TWO BEDROOM
864 SF



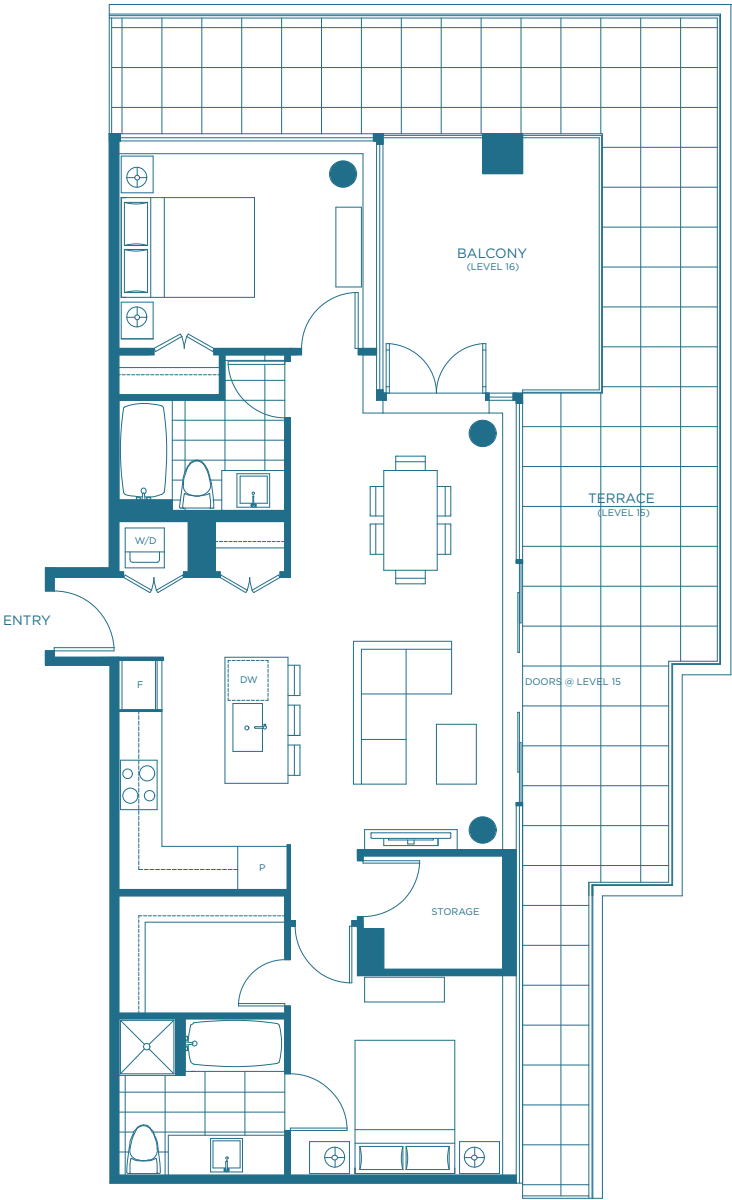
D7

TWO BEDROOM
879 SF



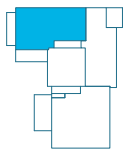
D8

TWO BEDROOM
1,022 SF



D9

TWO BEDROOM
1,184 SF

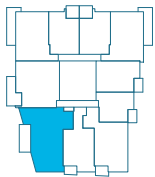


LEVEL 15 - 16

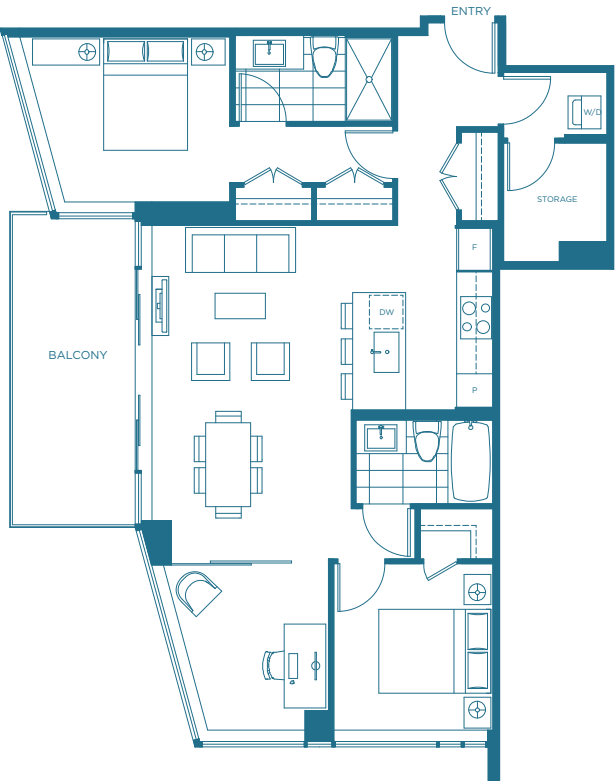


E1

TWO BEDROOM + DEN
1,062 SF



LEVEL 4 - 14

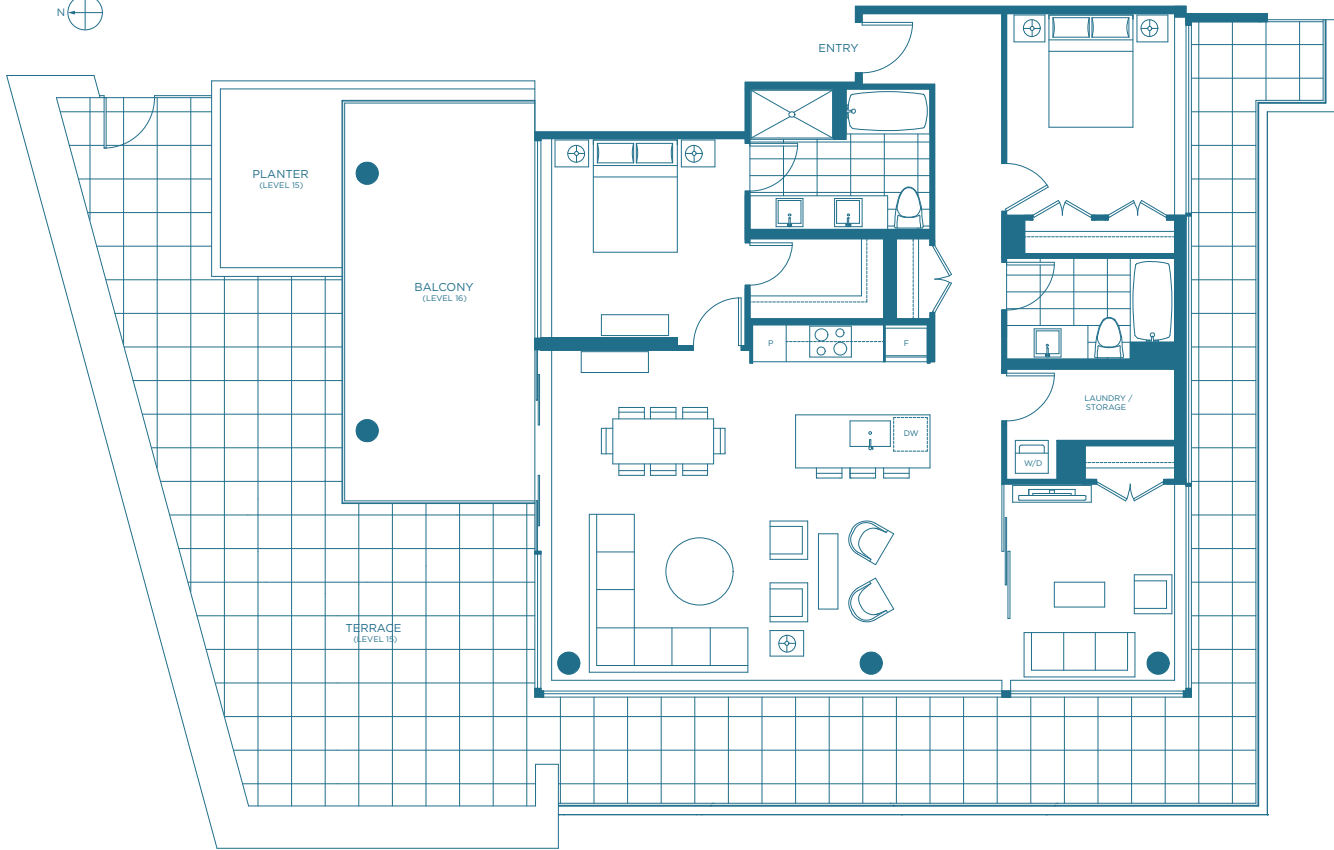


E2

TWO BEDROOM + DEN
1,488 SF

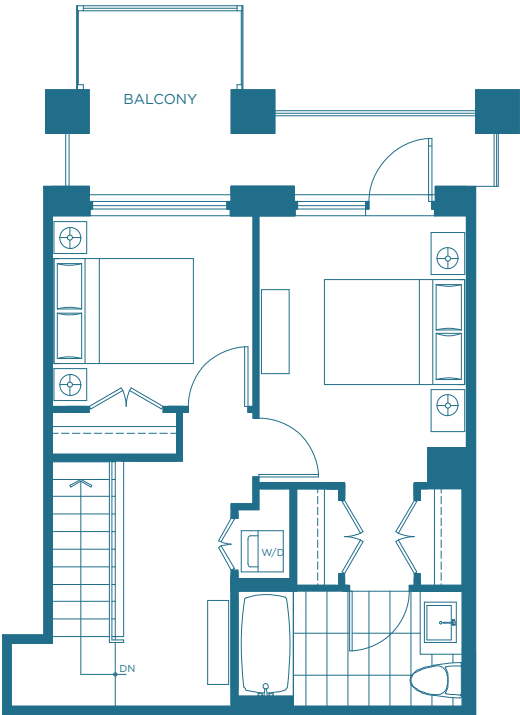
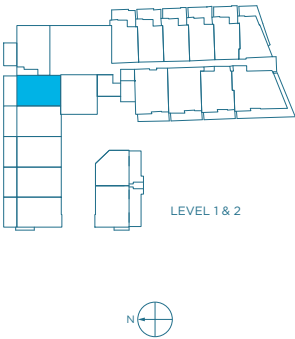


LEVEL 15 - 16

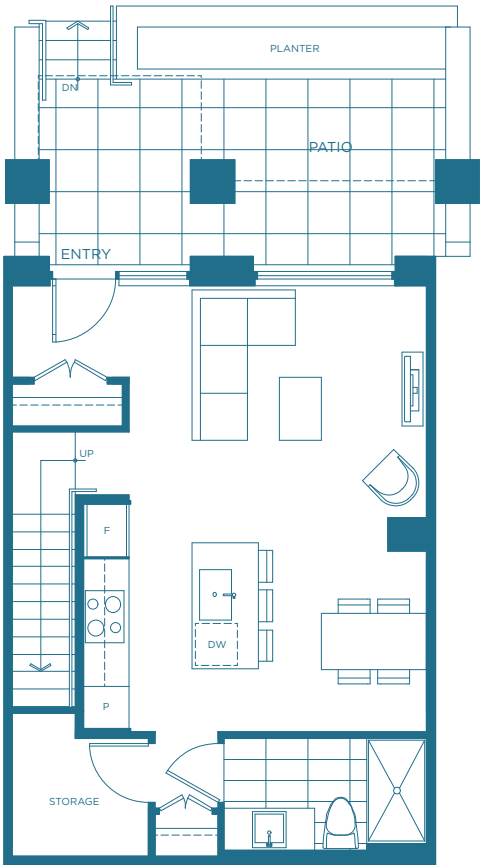


TH1

TWO BEDROOM
1,100 SF



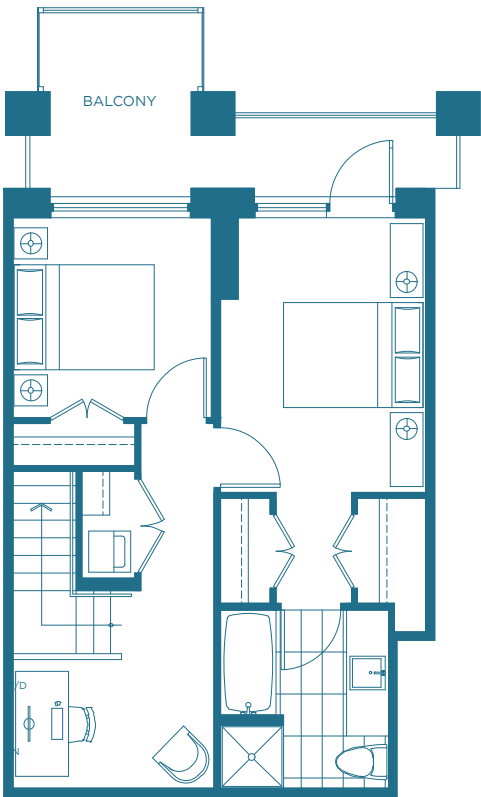
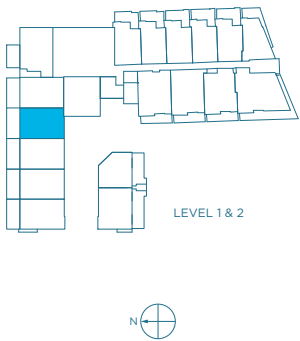
LEVEL 2



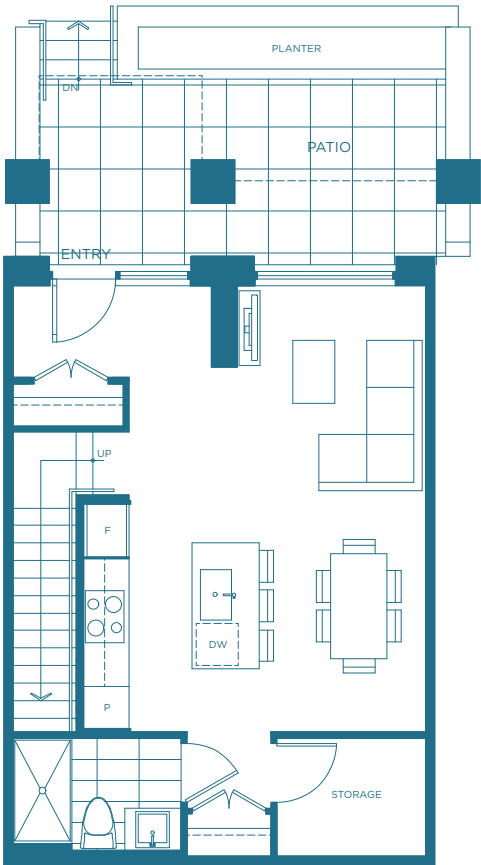
LEVEL 1

TH2

TWO BEDROOM + FLEX
1,180 SF



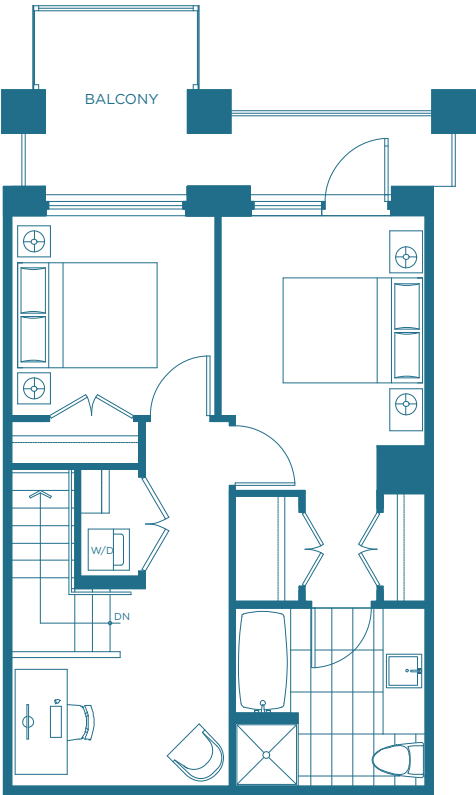
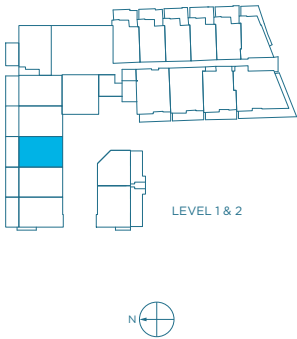
LEVEL 2



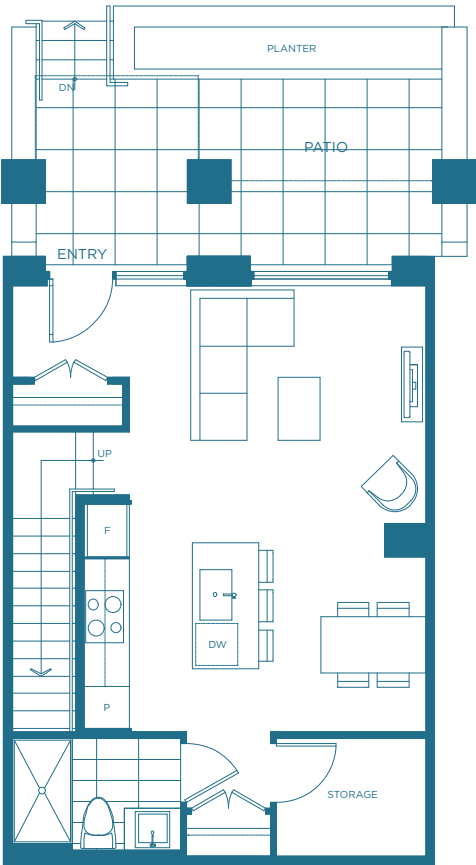
LEVEL 1

TH3

TWO BEDROOM + FLEX
1,197 SF



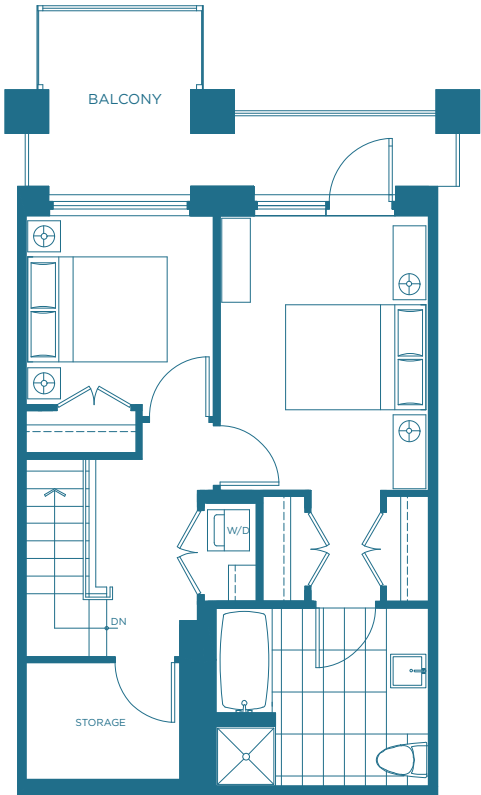
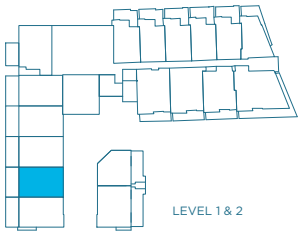
LEVEL 2



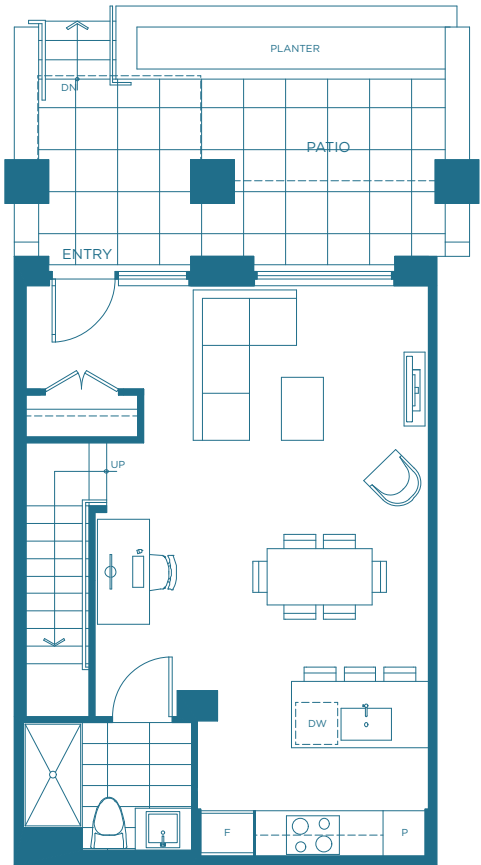
LEVEL 1

TH4

TWO BEDROOM
1,177 SF



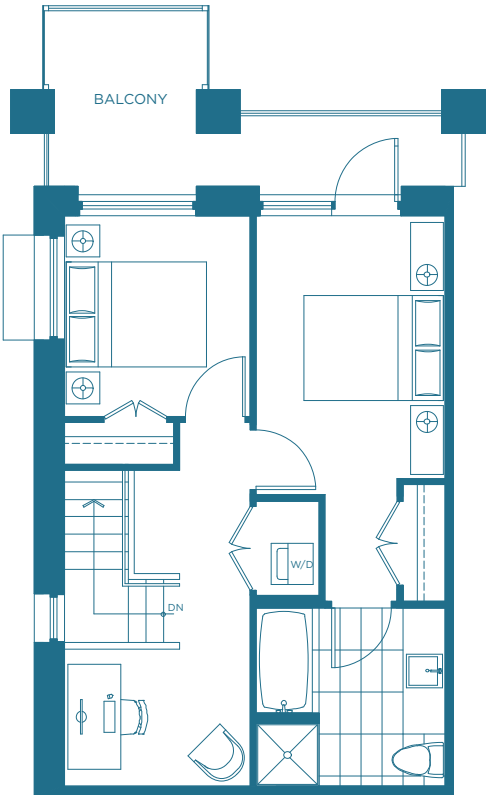
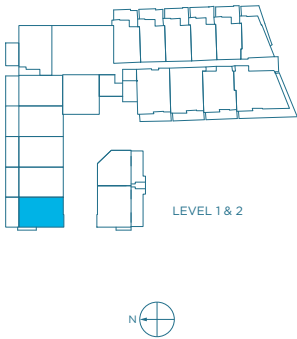
LEVEL 2



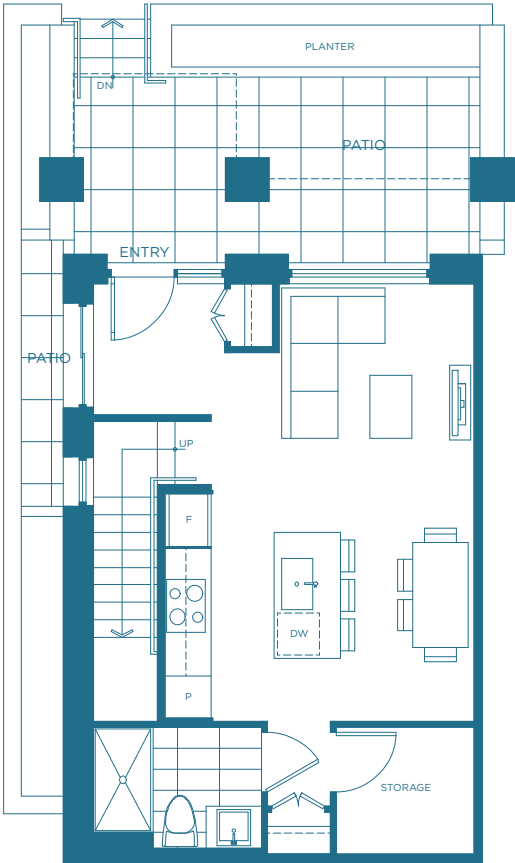
LEVEL 1

TH5

TWO BEDROOM + FLEX
1,188 SF



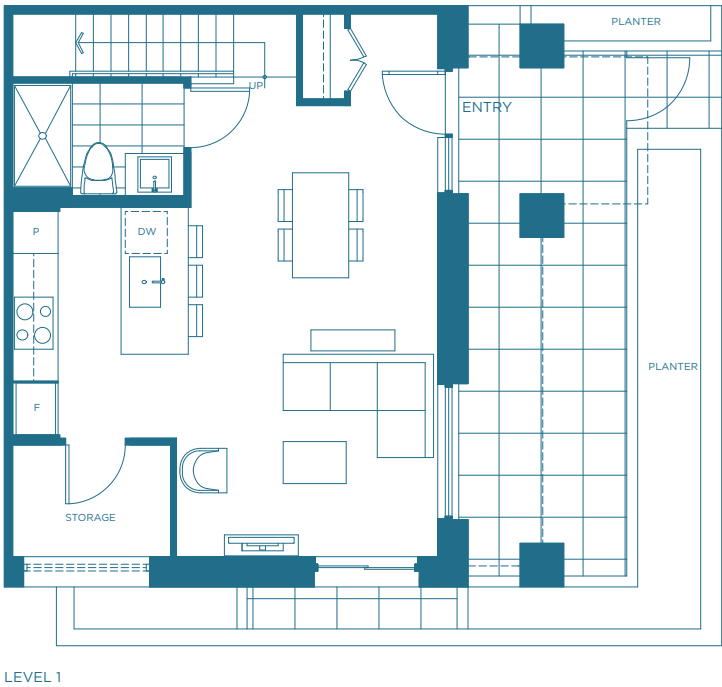
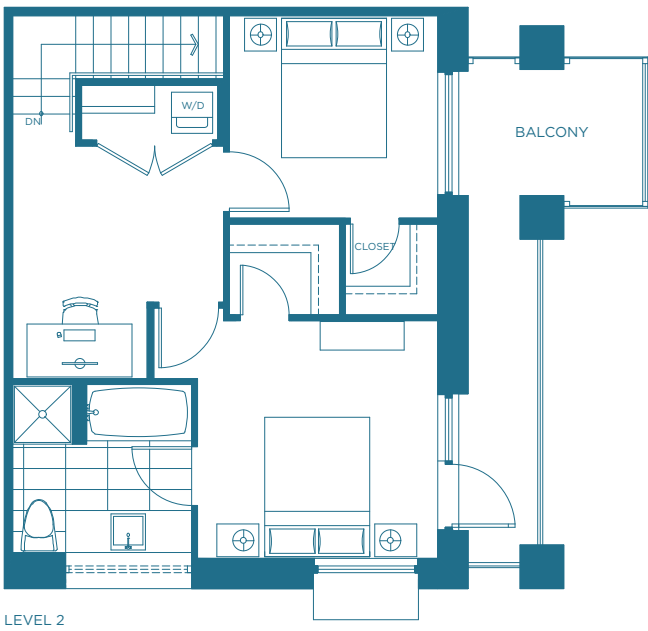
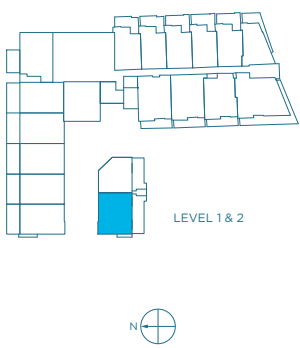
LEVEL 2



LEVEL 1

TH6

TWO BEDROOM + FLEX
1,248 SF



TH7

TWO BEDROOM
1,006 SF

