

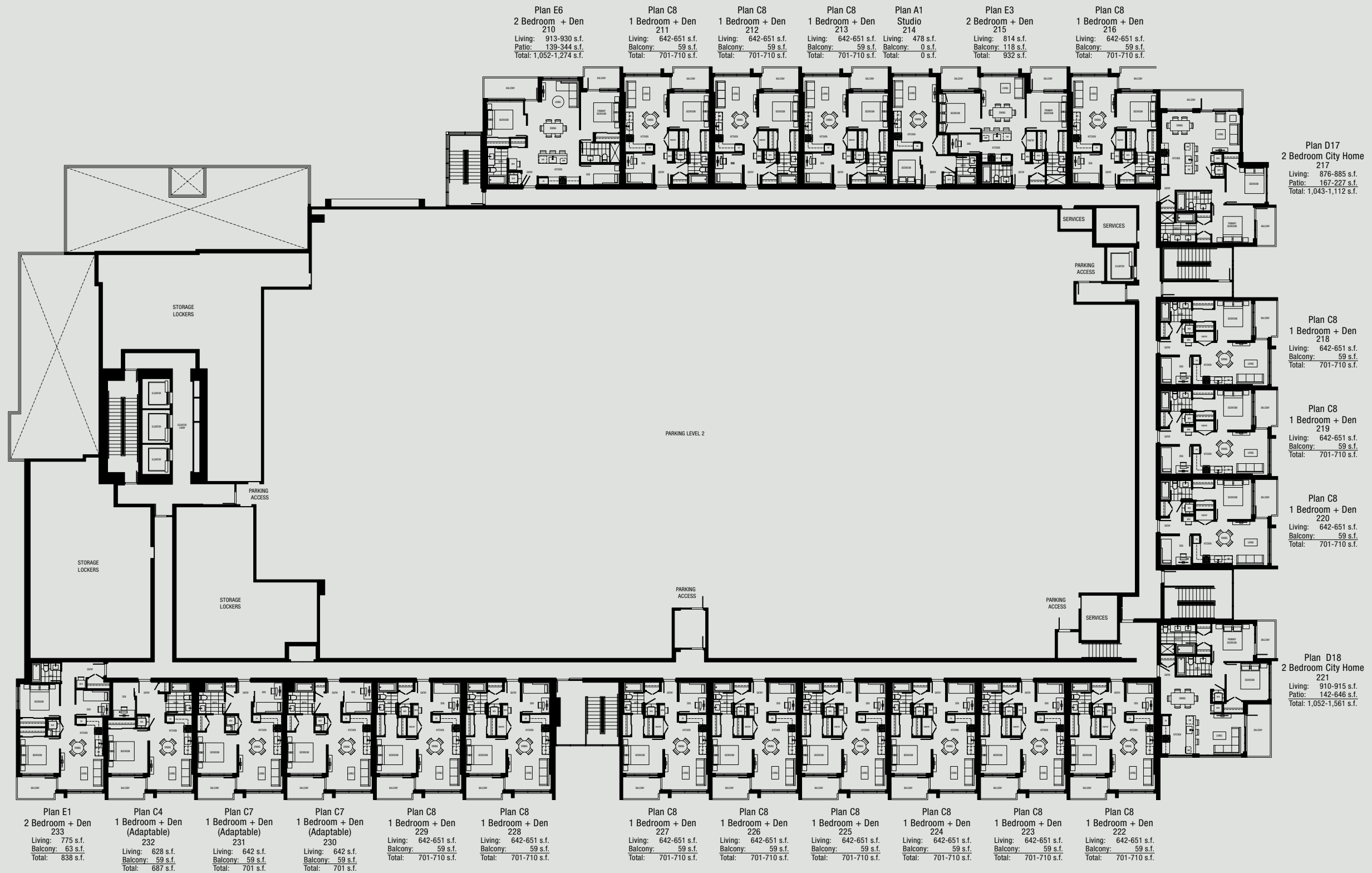
Level 01

The developer reserves the right in its discretion to make changes to the floor plans, project designs, features and dimensions. Renderings are artistic concepts only. Square footage is approximate and has been calculated from architectural plans. Actual final dimensions following completion of construction may vary from those set out herein. E & O.E.



rennie





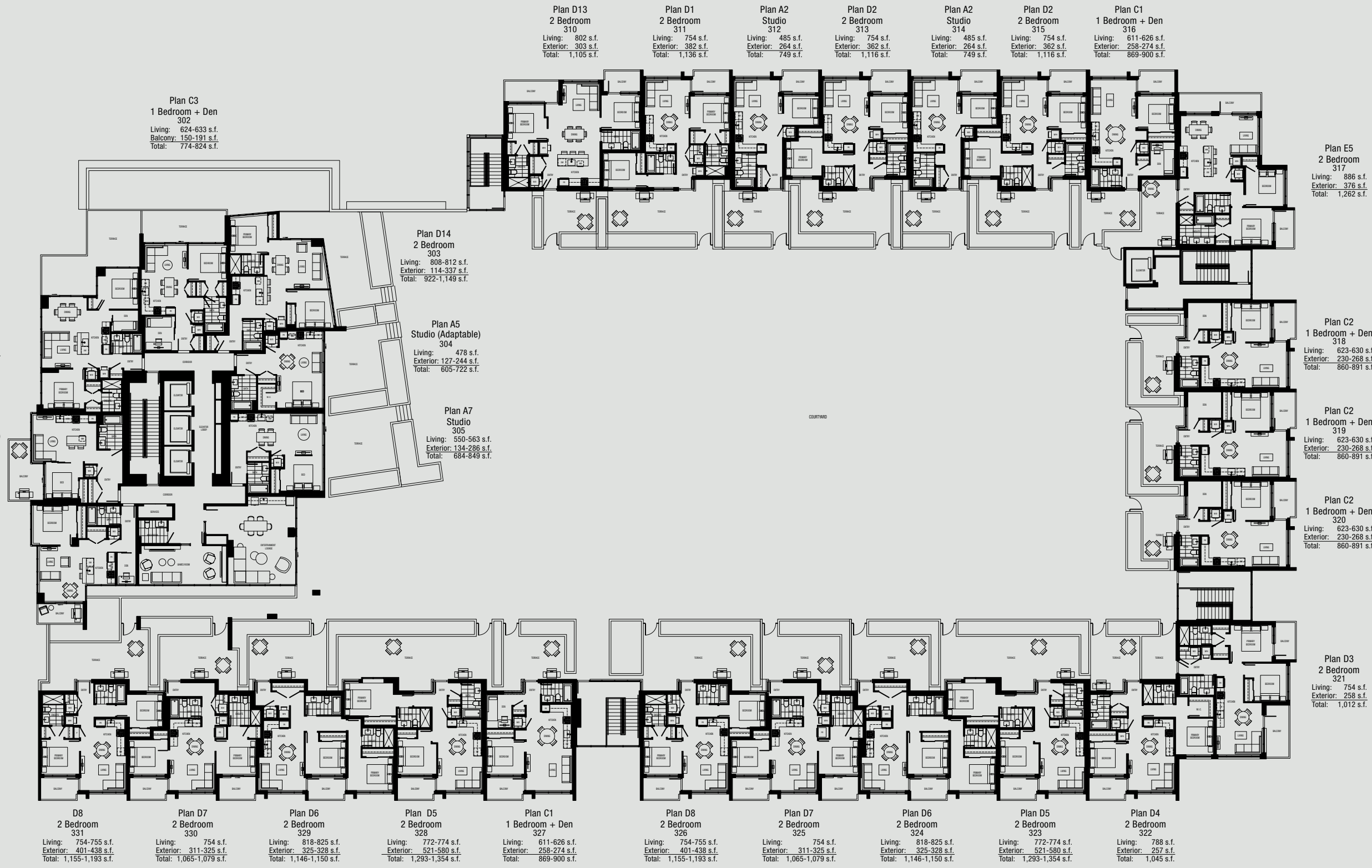
Level 02

The developer reserves the right in its discretion to make changes to the floor plans, project designs, features and dimensions. Renderings are artistic concepts only. Square footage is approximate and has been calculated from architectural plans. Actual final dimensions following completion of construction may vary from those set out herein. E.& O.E.



rennie

eclipse
BRENTWOOD



Level 03

The developer reserves the right in its discretion to make changes to the floor plans, project designs, features and dimensions. Renderings are artistic concepts only. Square footage is approximate and has been calculated from architectural plans. Actual final dimensions following completion of construction may vary from those set out herein. E & O.E.



rennie

eclipse
BRENTWOOD

Plan C3
1 Bedroom + Den
402

Living: 624-633 s.f.
Balcony: 150-191 s.f.
Total: 774-824 s.f.



Plan E4
2 Bedroom + Den
401
Living: 845-864 s.f.
Exterior: 106-352 s.f.
Total: 951-1,216 s.f.

Plan A8
Studio (Adaptable)
407
Living: 557-558 s.f.
Balcony: 127 s.f.
Total: 684-685 s.f.

Plan C10
1 Bedroom + Den
406
Living: 645-650 s.f.
Balcony: 71 s.f.
Total: 716-721 s.f.

Plan D14
2 Bedroom
403
Living: 808-812 s.f.
Exterior: 114-337 s.f.
Total: 922-1,149 s.f.

Plan A5
Studio (Adaptable)
404
Living: 478 s.f.
Exterior: 127-244 s.f.
Total: 605-722 s.f.

Plan A7
Studio
405
Living: 550-563 s.f.
Exterior: 134-286 s.f.
Total: 684-849 s.f.



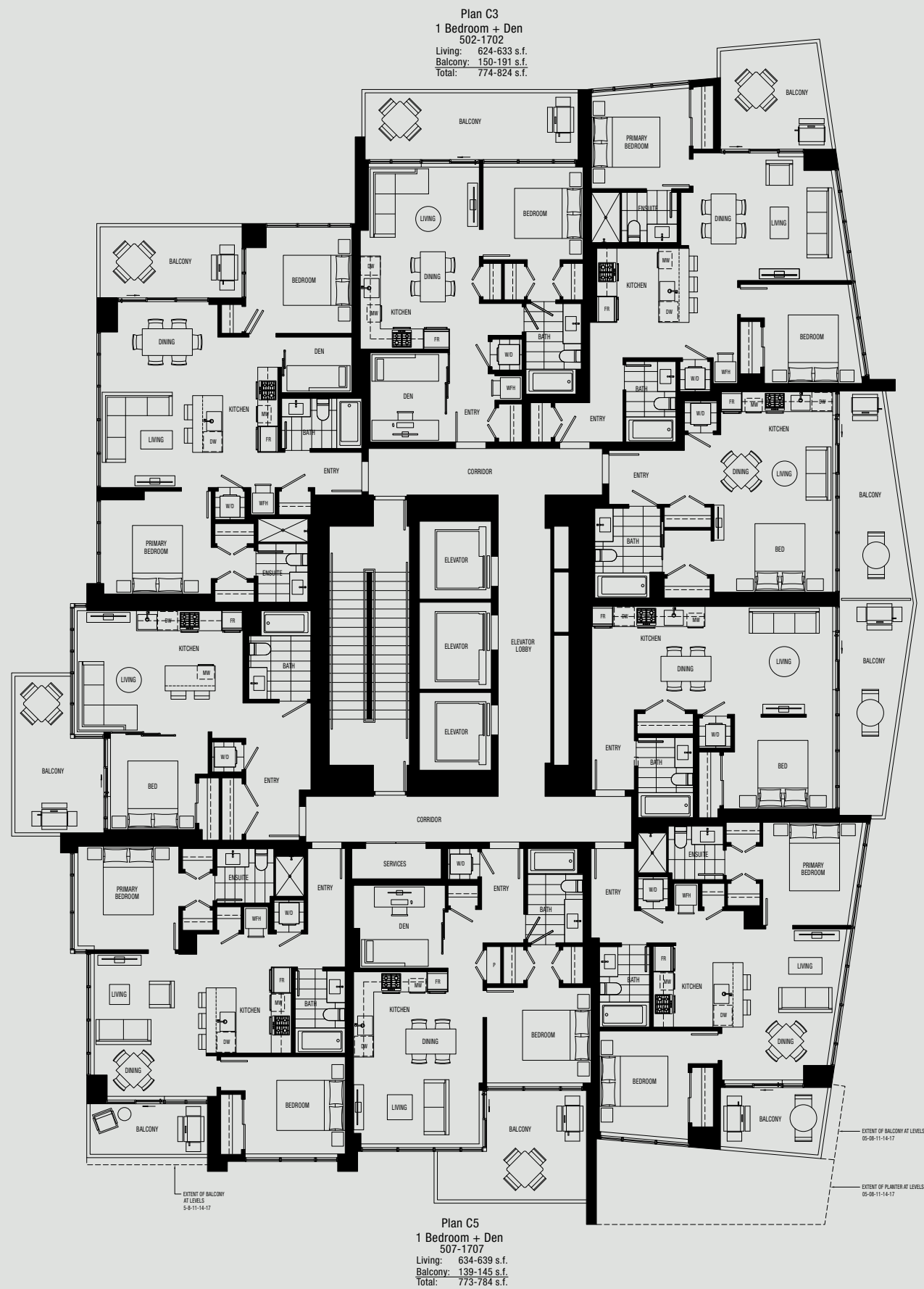
Level 04

The developer reserves the right in its discretion to make changes to the floor plans, project designs, features and dimensions. Renderings are artistic concepts only. Square footage is approximate and has been calculated from architectural plans. Actual final dimensions following completion of construction may vary from those set out herein. E & O.E.



rennie

eclipse
BRENTWOOD



Plan C3
1 Bedroom + Den
 502-1702
 Living: 624-633 s.f.
 Balcony: 150-191 s.f.
 Total: 774-824 s.f.

Plan E4
2 Bedroom + Den
 501-1701
 Living: 845-864 s.f.
 Exterior: 106-352 s.f.
 Total: 951-1,216 s.f.

Plan A8
Studio (Adaptable)
 509-1709
 Living: 557-558 s.f.
 Balcony: 127 s.f.
 Total: 684-685 s.f.

Plan D11
2 Bedroom
 508-1708
 Living: 783-794 s.f.
 Balcony: 65-98 s.f.
 Total: 848-892 s.f.

Plan C5
1 Bedroom + Den
 507-1707
 Living: 634-639 s.f.
 Balcony: 139-145 s.f.
 Total: 773-784 s.f.

Plan D14
2 Bedroom
 503-1703
 Living: 808-812 s.f.
 Exterior: 114-337 s.f.
 Total: 922-1,149 s.f.

Plan A6
Studio (Adaptable)
 504-1704
 Living: 478 s.f.
 Balcony: 127-129 s.f.
 Total: 605-607 s.f.

Plan A7
Studio
 505-1705
 Living: 550-563 s.f.
 Exterior: 134-286 s.f.
 Total: 684-649 s.f.

Plan D9
2 Bedroom
 506-1706
 Living: 758 s.f.
 Exterior: 70-80 s.f.
 Total: 828-838 s.f.

EXTENT OF BALCONY AT LEVELS 05-08-11-16-17

EXTENT OF BALCONY AT LEVELS 05-08-11-16-17

EXTENT OF PLANTER AT LEVELS 05-08-11-16-17



Levels 05-17

The developer reserves the right in its discretion to make changes to the floor plans, project designs, features and dimensions. Renderings are artistic concepts only. Square footage is approximate and has been calculated from architectural plans. Actual final dimensions following completion of construction may vary from those set out herein. E & O.E.



rennie

eclipse
 BRENTWOOD



Plan C3
1 Bedroom + Den
 1802-3102
 Living: 624-633 s.f.
 Balcony: 150-191 s.f.
 Total: 774-824 s.f.

Plan D14
2 Bedroom
 1803-3103
 Living: 808-812 s.f.
 Exterior: 114-337 s.f.
 Total: 922-1,149 s.f.

Plan E4
2 Bedroom + Den
 1801-3101
 Living: 845-864 s.f.
 Exterior: 106-352 s.f.
 Total: 951-1,216 s.f.

Plan F1
3 Bedroom (Adaptable)
 1804-3104
 Living: 1,021-1,022 s.f.
 Balcony: 262-265 s.f.
 Total: 1,283-1,286 s.f.

Plan A8
Studio (Adaptable)
 1808-3108
 Living: 557-558 s.f.
 Balcony: 127 s.f.
 Total: 684-685 s.f.

Plan D11
2 Bedroom
 1807-3107
 Living: 783-794 s.f.
 Balcony: 65-98 s.f.
 Total: 848-892 s.f.

Plan D15
2 Bedroom
 1805-3105
 Living: 812-813 s.f.
 Balcony: 70-80 s.f.
 Total: 882-893 s.f.

Plan C5
1 Bedroom + Den
 1806-3106
 Living: 634-639 s.f.
 Balcony: 139-145 s.f.
 Total: 773-784 s.f.

Levels 18-31

The developer reserves the right in its discretion to make changes to the floor plans, project designs, features and dimensions. Renderings are artistic concepts only. Square footage is approximate and has been calculated from architectural plans. Actual final dimensions following completion of construction may vary from those set out herein. E & O.E.



rennie





Plan C6
1 Bedroom + Den
 3202
 Living: 636-638 s.f.
 Balcony: 160 s.f.
 Total: 796-798 s.f.

Plan E4
2 Bedroom + Den
 3201
 Living: 845-864 s.f.
 Exterior: 106-352 s.f.
 Total: 951-1,216 s.f.

Plan A4
Studio (Adaptable)
 3208
 Living: 560 s.f.
 Balcony: 0 s.f.
 Total: 560 s.f.

Plan D11
2 Bedroom
 3207
 Living: 783-794 s.f.
 Balcony: 65-98 s.f.
 Total: 848-892 s.f.

Plan C5
1 Bedroom + Den
 3206
 Living: 634-639 s.f.
 Balcony: 139-145 s.f.
 Total: 773-784 s.f.

Plan D12
2 Bedroom
 3203
 Living: 790 s.f.
 Balcony: 114 s.f.
 Total: 904 s.f.

Plan D10
2 Bedroom
 3204
 Living: 767-770 s.f.
 Balcony: 222-343 s.f.
 Total: 992-1,110 s.f.

Plan D16
2 Bedroom
 3205
 Living: 860 s.f.
 Balcony: 386 s.f.
 Total: 1,246 s.f.



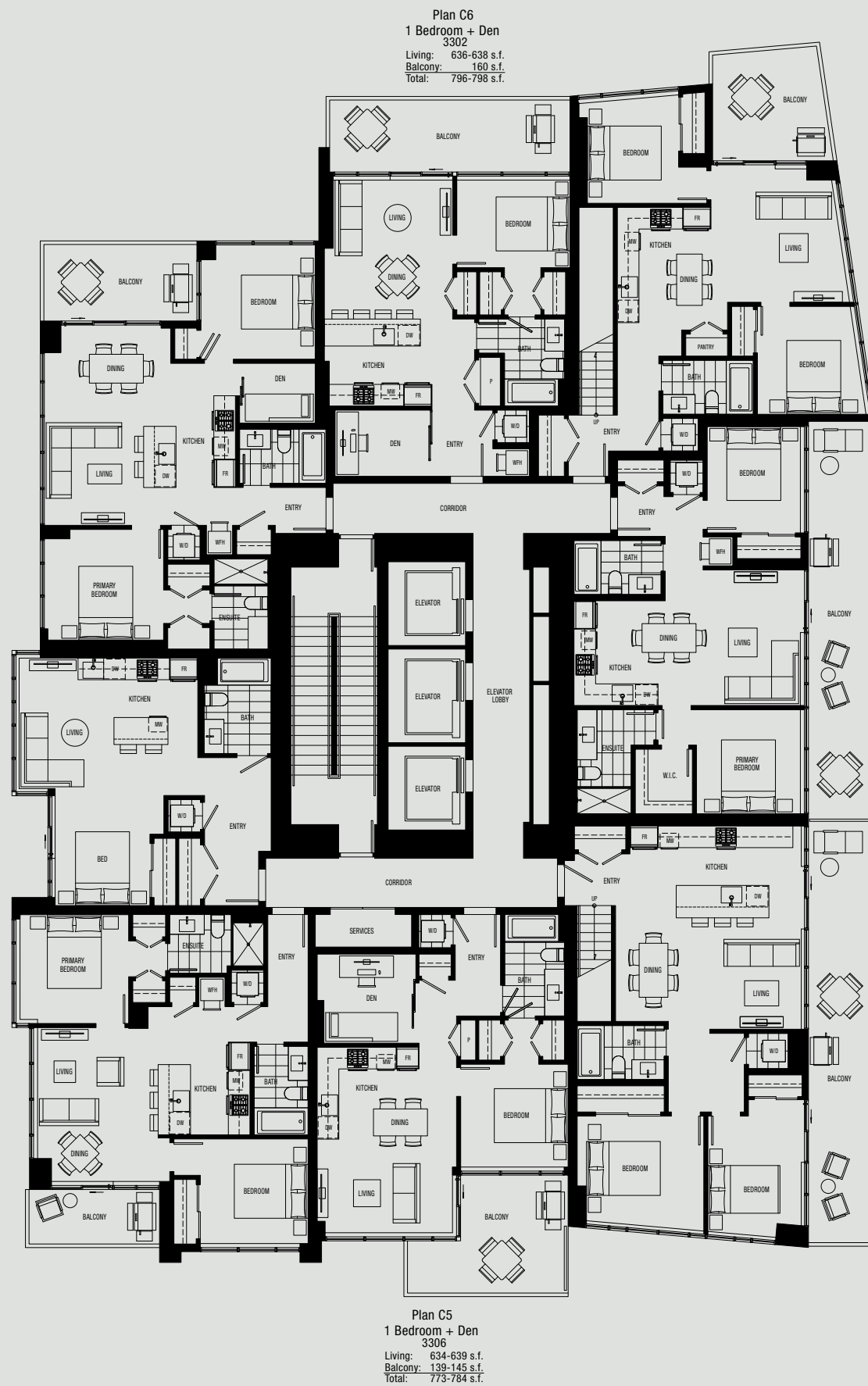
Level 32

The developer reserves the right in its discretion to make changes to the floor plans, project designs, features and dimensions. Renderings are artistic concepts only. Square footage is approximate and has been calculated from architectural plans. Actual final dimensions following completion of construction may vary from those set out herein. E & O.E.



rennie

eclipse
 BRENTWOOD



Plan C6
1 Bedroom + Den
3302
Living: 636-638 s.f.
Balcony: 160 s.f.
Total: 796-798 s.f.

Plan F2
3 Bedroom
3303
Living: 1,157 s.f.
Balcony: 396 s.f.
Total: 1,553 s.f.

Plan E4
2 Bedroom + Den
3301
Living: 845-864 s.f.
Exterior: 106-352 s.f.
Total: 951-1,216 s.f.

Plan D10
2 Bedroom
3304
Living: 767-770 s.f.
Balcony: 222-343 s.f.
Total: 992-1,110 s.f.

Plan A4
Studio (Adaptable)
3308
Living: 560 s.f.
Balcony: 0 s.f.
Total: 560 s.f.

Plan F3
3 Bedroom + Den
3305
Living: 1,533 s.f.
Balcony: 236 s.f.
Total: 1,769 s.f.

Plan D11
2 Bedroom
3307
Living: 783-794 s.f.
Balcony: 65-98 s.f.
Total: 848-892 s.f.

Plan C5
1 Bedroom + Den
3306
Living: 634-639 s.f.
Balcony: 139-145 s.f.
Total: 773-784 s.f.



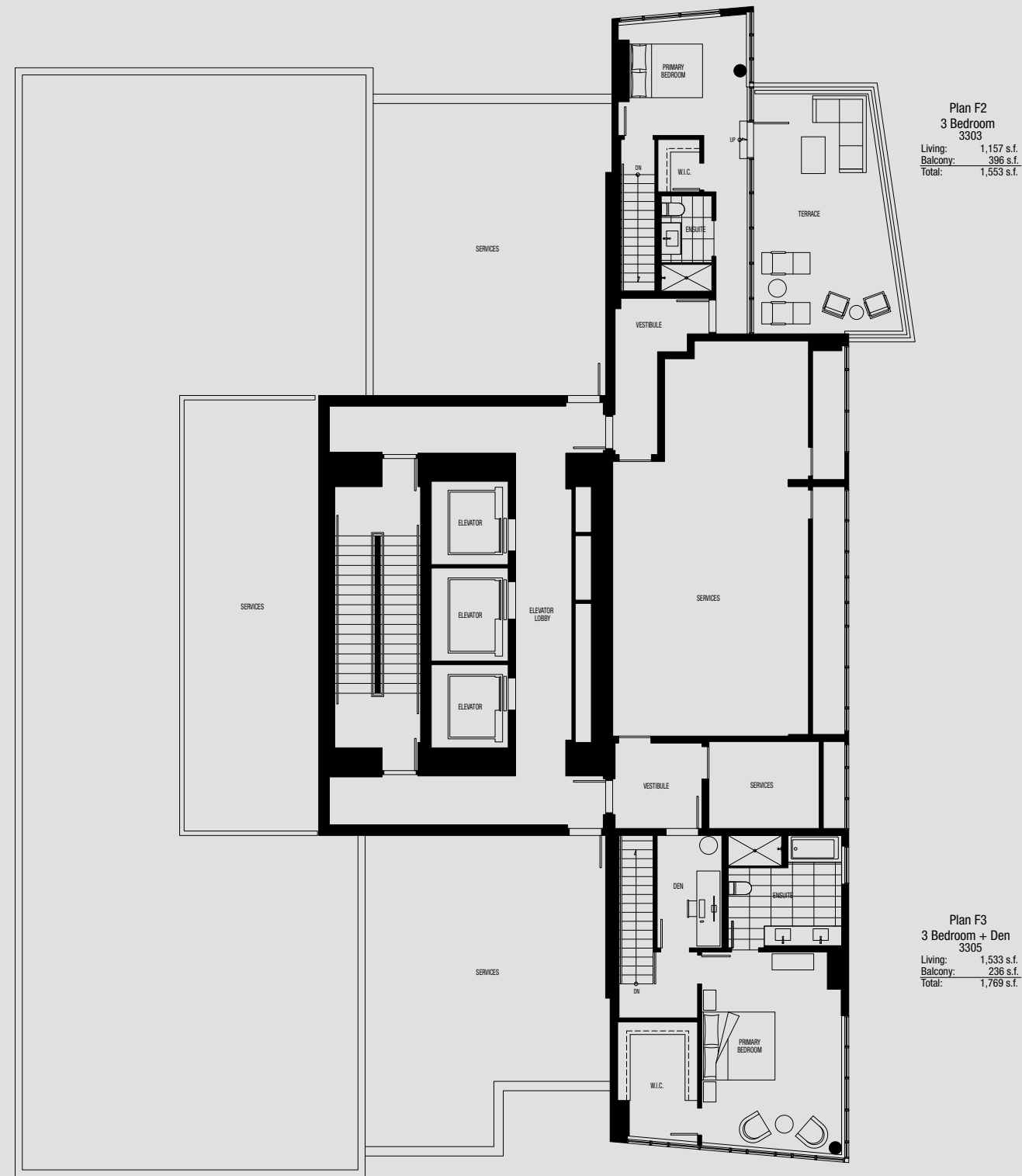
Level 33

The developer reserves the right in its discretion to make changes to the floor plans, project designs, features and dimensions. Renderings are artistic concepts only. Square footage is approximate and has been calculated from architectural plans. Actual final dimensions following completion of construction may vary from those set out herein. E & O.E.



rennie

eclipse
BRENTWOOD



Level 34

The developer reserves the right in its discretion to make changes to the floor plans, project designs, features and dimensions. Renderings are artistic concepts only. Square footage is approximate and has been calculated from architectural plans. Actual final dimensions following completion of construction may vary from those set out herein. E.& O.E.



rennie

eclipse
 BRENTWOOD