

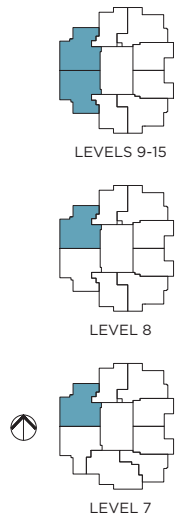
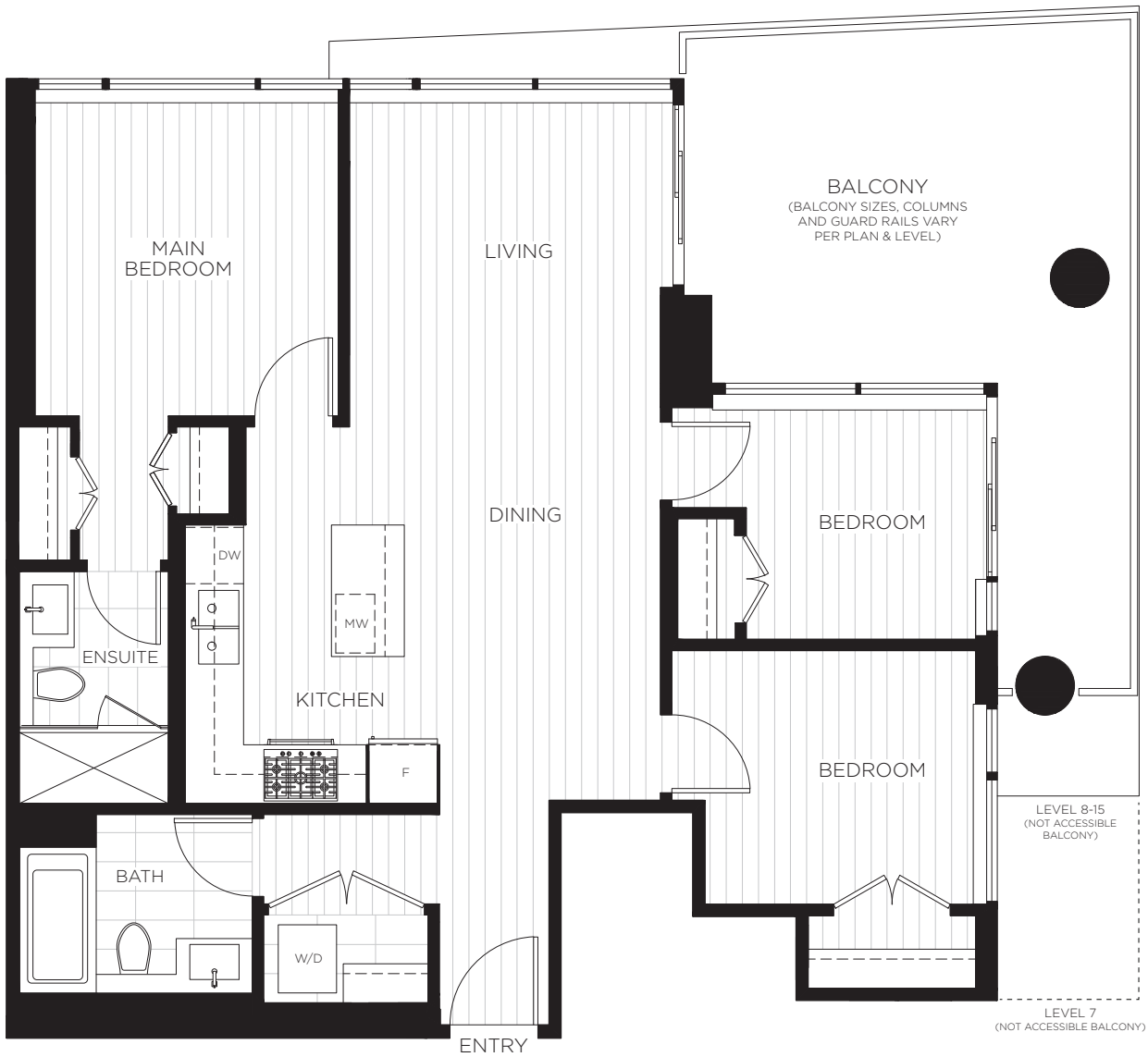


PRECIDIA

WEST COQUITLAM

THREE BEDROOM
TWO BATH

INDOOR LIVING: APPROX. 928 SQ. FT.
OUTDOOR LIVING: APPROX. 237-243 SQ. FT.
TOTAL: APPROX. 1,165-1,171 SQ. FT.



In a continuing effort to meet the challenge of product improvements, we reserve the right to modify or change dimensions, sizes, specifications, layouts, orientations and materials without notice. All patio, terrace and balcony sizes may vary. Windows, columns, privacy screens, demising walls, spandrel and guardrail details may vary depending upon the plan and floor level. The quality homes at Precidia are built by LM Precidia Homes Limited Partnership. E. & O.E.