



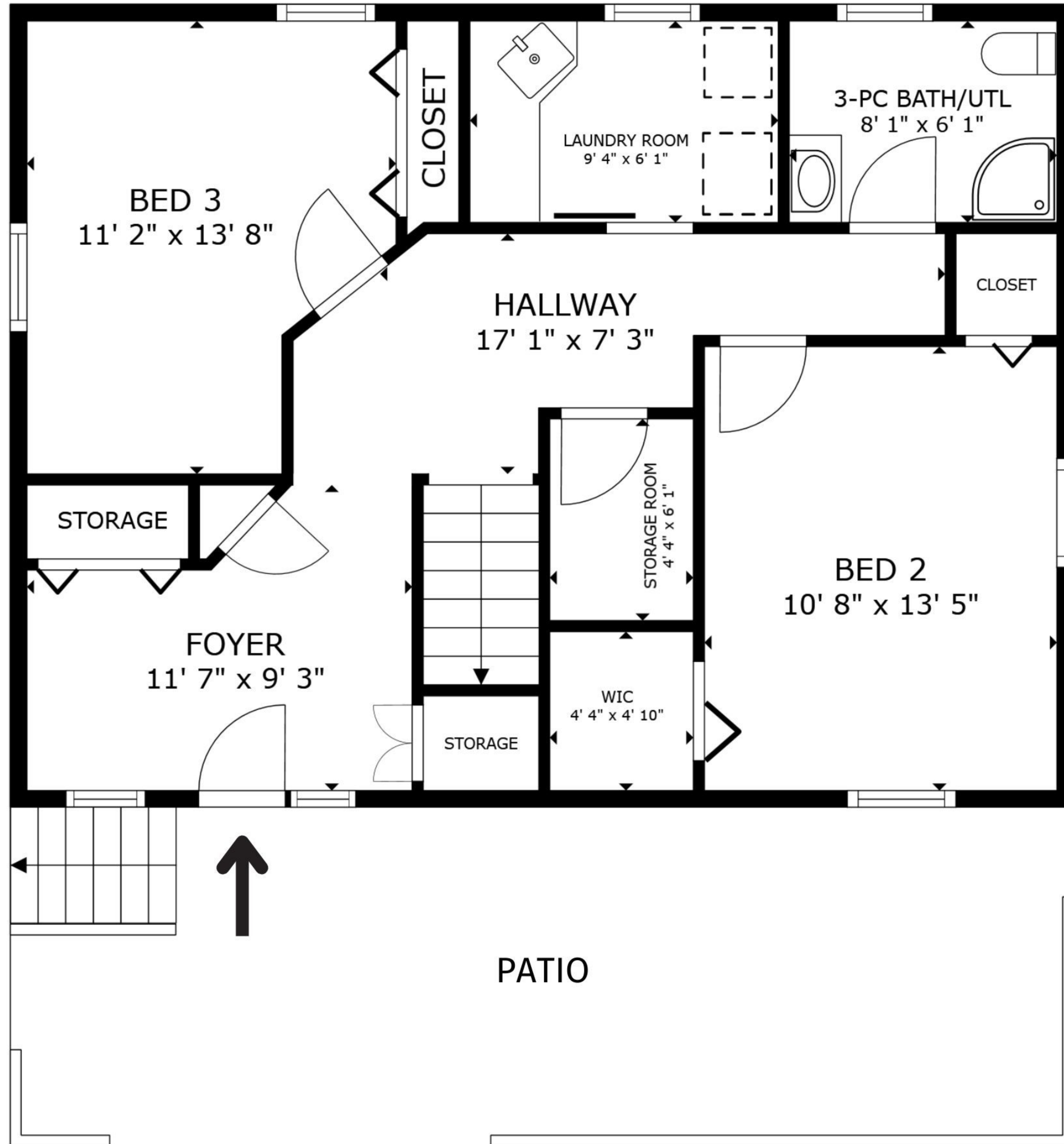
Sara Amos

Century 21 Amos Realty | (250) 535-0518 | sara.amos@century21amosrealty.ca

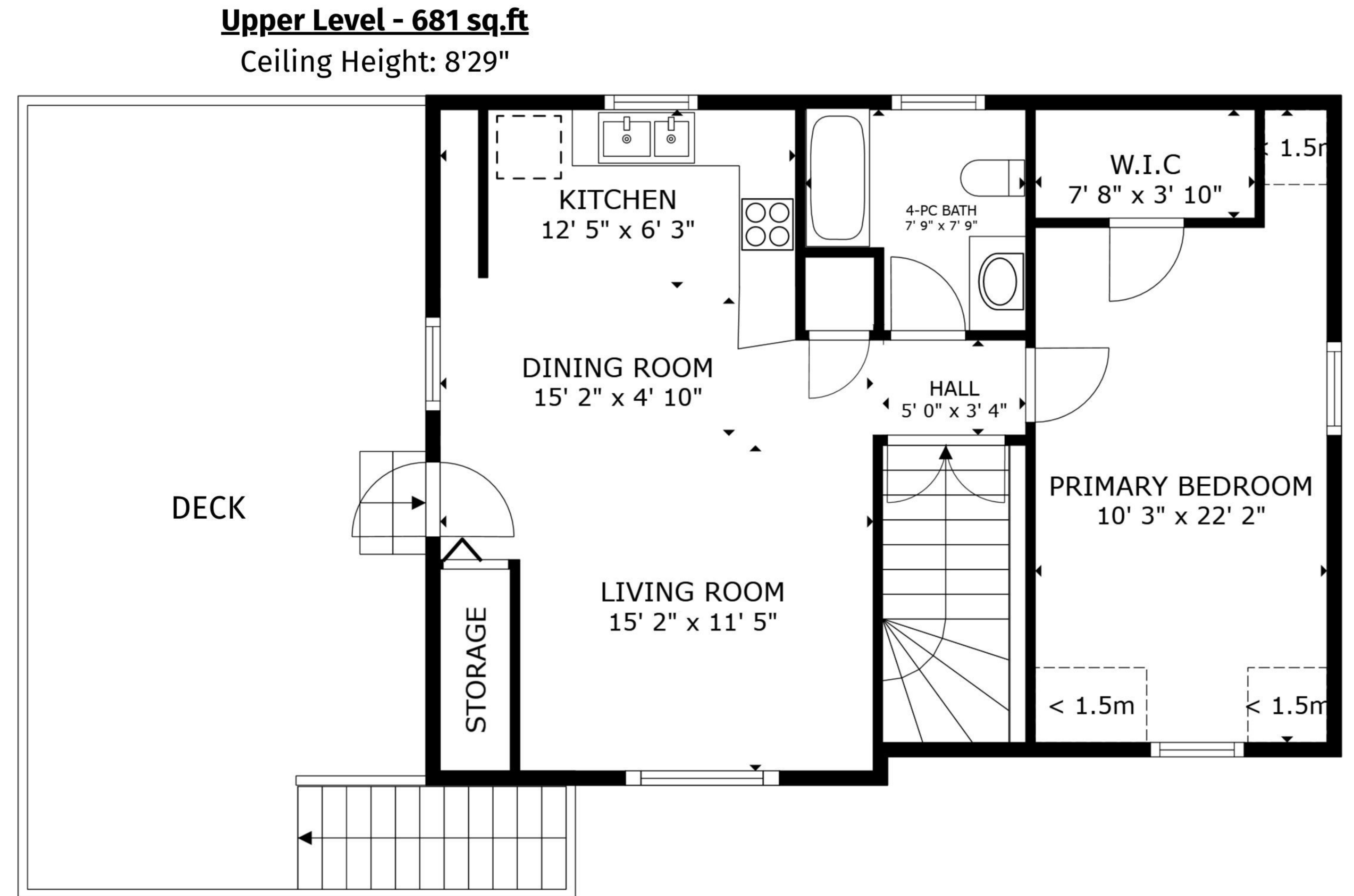
5836 Princess Pl, Oliver, BC

3 BED / 2 BATH

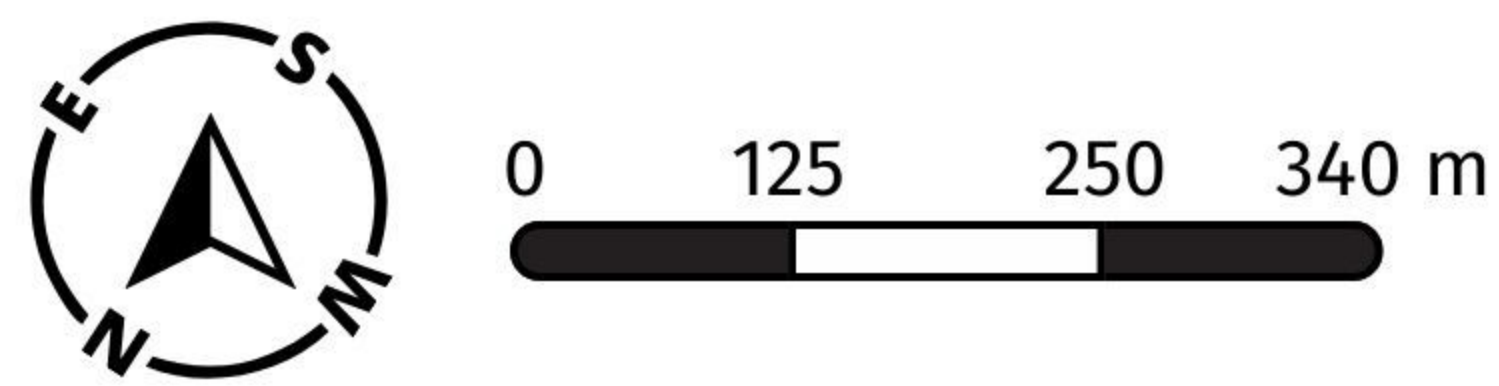
Upper Level:	681 sq.ft.
Main Floor:	722 sq.ft.
Total Livable SQ.FT:	1,403 sq.ft.



Main Floor - 722 sq.ft
Ceiling Height: 10'48"



Upper Level - 681 sq.ft
Ceiling Height: 8'29"



778-955-9601

www.itshomephotography.com

MEASURED ON: (2024-04-10)

Total square foot calculated to gross unit area. SQFT based on interior measurements and not taken from original blueprints, may include unfinished area. This is for marketing purposes only and is not intended for architectural/construction use. All details, sizes & placements should be considered approximate within +/- 2% tolerance.

