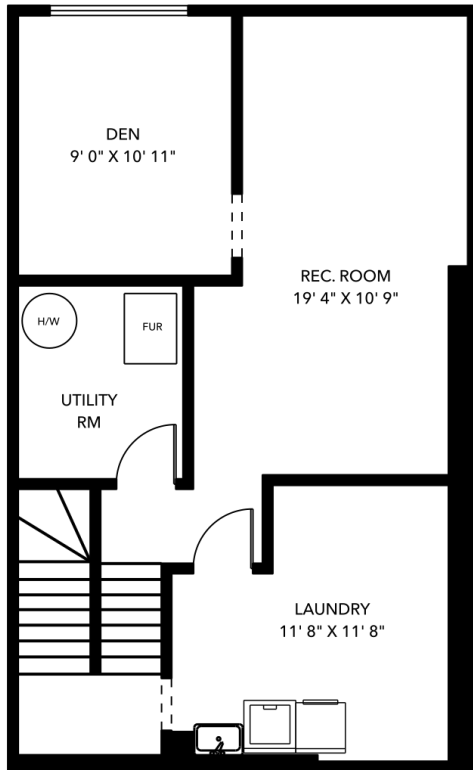


TRACY LUNNIN  
REAL ESTATE

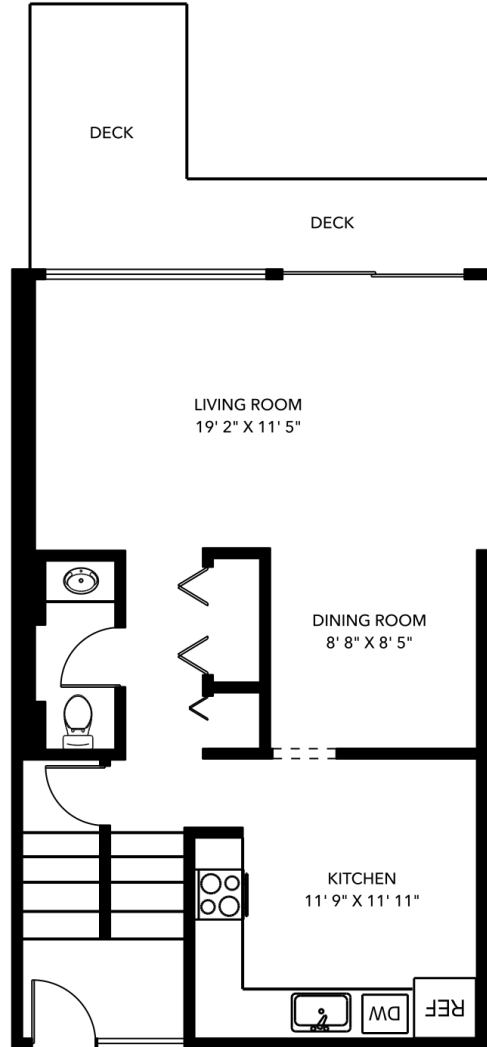
2983 Mira Place, Burnaby, BC  
Total Finished 2007 sf\*  
\*Includes utility room.

Candace Cappellaro



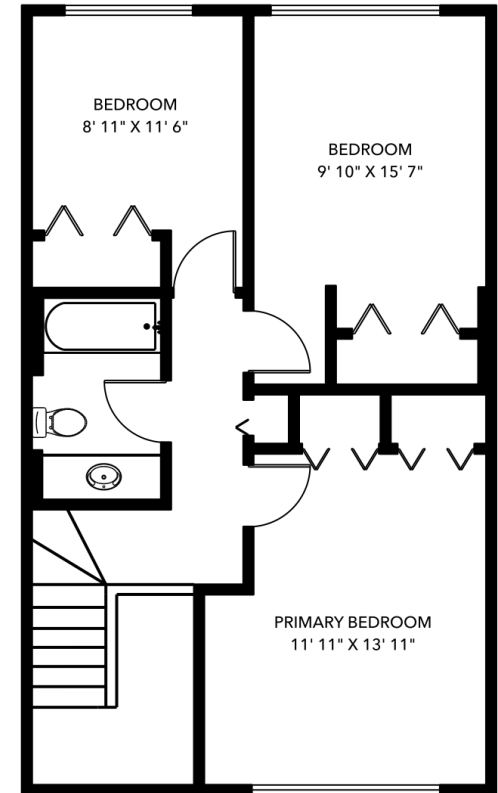
**Lower Level**

684 sf  
CH: 7' 8"



**Main Level**

684 sf  
CH: 8'



**Upper Level**

639 sf  
CH: 8'

Measurements and floor plan are approximate and are to be used for advertising purposes only. Not suitable for construction or architectural use.  
Square footage calculated using ANSI Z765 method. February 2024.



Sterling Realty  
INDEPENDENTLY OWNED AND OPERATED