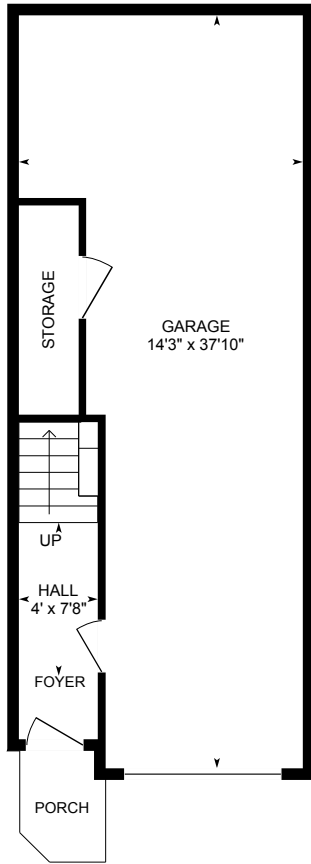
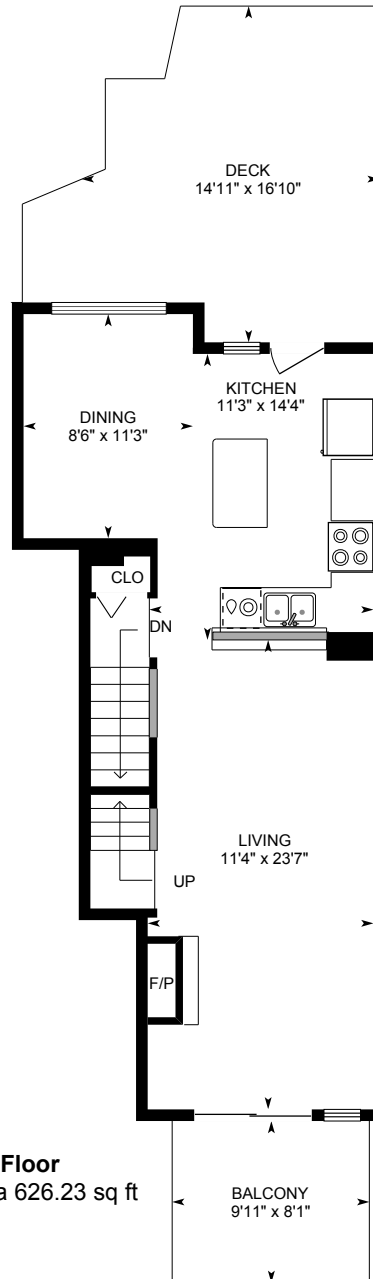


101-2000 Panorama Dr, Port Moody, BC

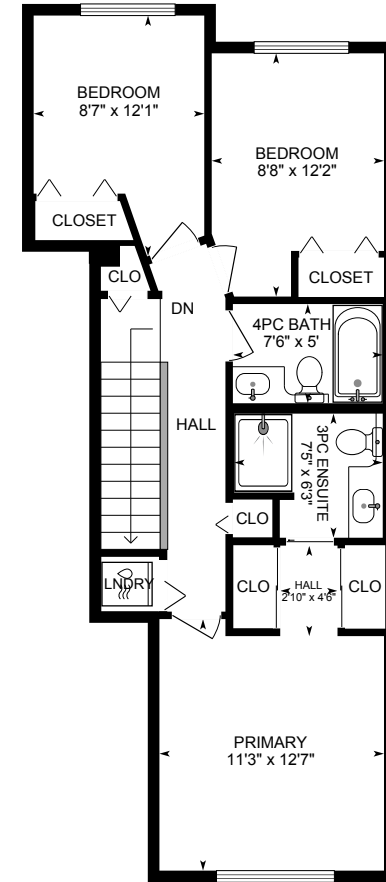
Total Finished Area 1373.27 sq ft
 Deck Area 234 sq ft
 Balcony Area 80 sq ft
 Garage Area 425 sq ft



Groundfloor
 Finished Area 83.12 sq ft



Main Floor
 Finished Area 626.23 sq ft



2nd Floor
 Finished Area 663.92 sq ft

