



GAVIN HUGHES

REAL ESTATE TEAM

LOVE YOUR NEIGHBOURHOOD

604.626.6618

gavin@gavinhughes.ca

www.gavinhughes.ca

#616-680 SEYLYNN CRES

NORTH VANCOUVER, BC

2 BEDROOMS + 1 1/2 BATHROOMS

TOTAL INTERIOR: 991 SQ.FT.

BALCONY: 196 SQ.FT.

CEILING HEIGHT: 8'-5"



ENTRANCE



Floor plan not suitable for architectural/construction purposes. ANSI Z765 stand used to calculate square footage. Buyer to verify. E&O insured for \$1,000,000.





GAVIN HUGHES

REAL ESTATE TEAM

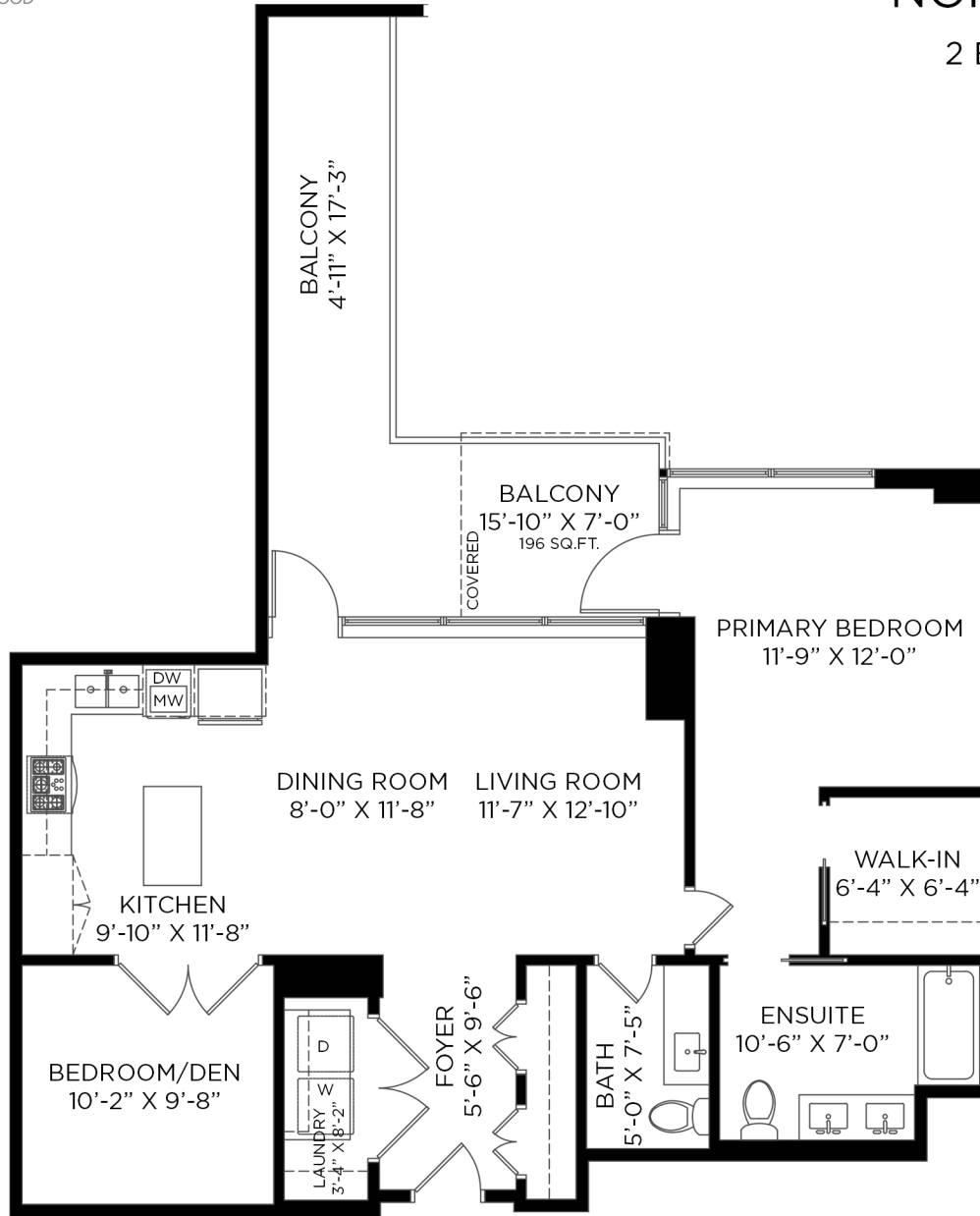
LOVE YOUR NEIGHBOURHOOD

604.626.6618
gavin@gavinhughes.ca
www.gavinhughes.ca

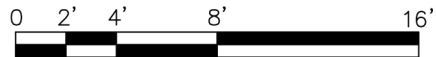
#616-680 SEYLYNN CRES NORTH VANCOUVER, BC

2 BEDROOMS + 1 1/2 BATHROOMS

TOTAL INTERIOR: 991 SQ.FT.
BALCONY: 196 SQ.FT.
CEILING HEIGHT: 8'-5"



ENTRANCE



Floor plan not suitable for architectural/construction purposes. ANSI Z765 stand used to calculate square footage. Buyer to verify. E&O insured for \$1,000,000.

