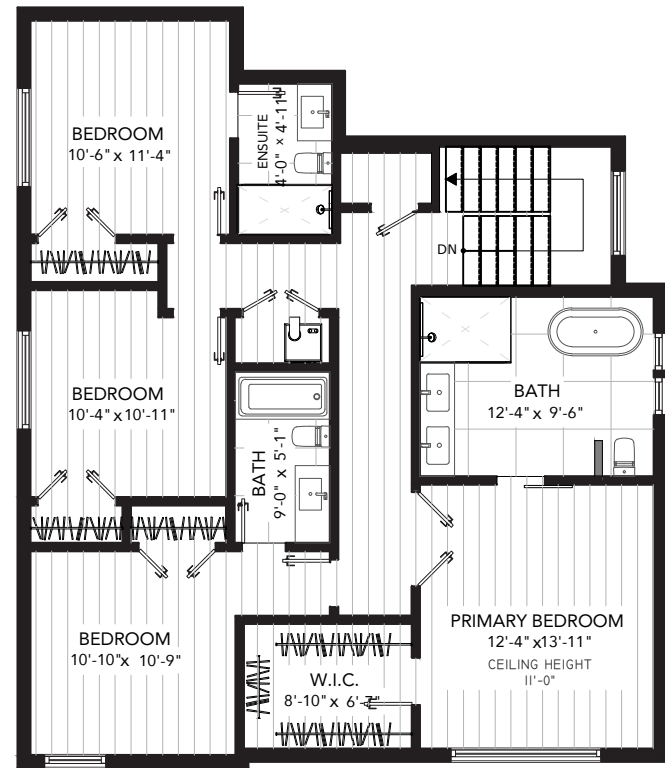
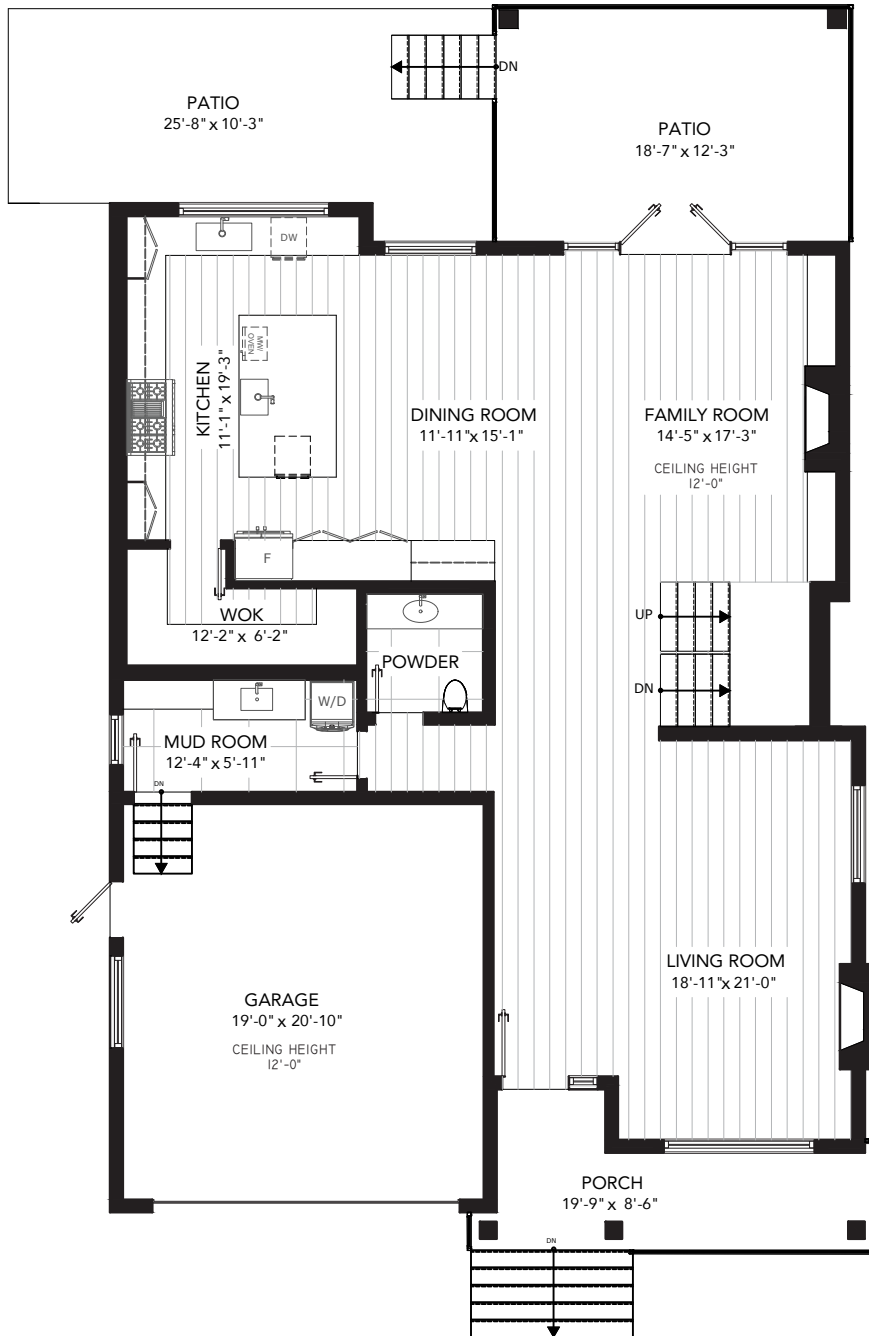


1260 PLATEAU DRIVE, NORTH VANCOUVER, BC

LOWER FLOOR: 1,548 SQ.FT.
 MAIN FLOOR : 1,522 SQ.FT.
 UPPER FLOOR: 1,210 SQ.FT.
 TOTAL: 4,280 SQ.FT.

PATIO TOTAL: 505 SQ.FT.
 GARAGE: 427 SQ.FT.
 PORCH : 124 SQ.FT.



1260 PLATEAU DRIVE, NORTH VANCOUVER, BC

LOWER FLOOR: 1,548 SQ.FT.
MAIN FLOOR : 1,522 SQ.FT.
UPPER FLOOR: 1,210 SQ.FT.
TOTAL: 4,280 SQ.FT.

PATIO TOTAL: 505 SQ.FT.
GARAGE: 427 SQ.FT.
PORCH : 124 SQ.FT.



LOWER FLOOR PLAN
CEILING HEIGHT 8"-0"