



# GAVIN HUGHES

REAL ESTATE TEAM

LOVE YOUR NEIGHBOURHOOD

604.626.6618

gavin@gavinhughes.ca

www.gavinhughes.ca

# 1032 KEITH ROAD NORTH VANCOUVER, BC

4 BEDROOMS + 3 1/2 BATHROOMS

**MAIN FLOOR - 1,116 SQ.FT.**  
CEILING HEIGHT: 8'-0"



Floor plan not suitable for architectural/construction purposes. ANSI Z765 stand used to calculate square footage. Buyer to verify. E&O insured for \$1,000,000.





# GAVIN HUGHES

REAL ESTATE TEAM

LOVE YOUR NEIGHBOURHOOD

604.626.6618

gavin@gavinhughes.ca

www.gavinhughes.ca

# 1032 KEITH ROAD NORTH VANCOUVER, BC

4 BEDROOMS + 3 1/2 BATHROOMS

LOWER FLOOR: 1,152 SQ.FT.

MAIN FLOOR: 1,116 SQ.FT.

UPPER FLOOR: 946 SQ.FT.

**TOTAL INTERIOR: 3,214 SQ.FT.**

GARAGE: 489 SQ.FT.

EXTERIOR LIVING: 880 SQ.FT.

## LOWER FLOOR - 1,152 SQ.FT.

CEILING HEIGHT: 7'-9"



## UPPER FLOOR - 946 SQ.FT.

CEILING HEIGHT: 7'-5"



Floor plan not suitable for architectural/construction purposes. ANSI Z765 stand used to calculate square footage. Buyer to verify. E&O insured for \$1,000,000.





# GAVIN HUGHES

REAL ESTATE TEAM

LOVE YOUR NEIGHBOURHOOD

604.626.6618  
gavin@gavinhughes.ca  
www.gavinhughes.ca

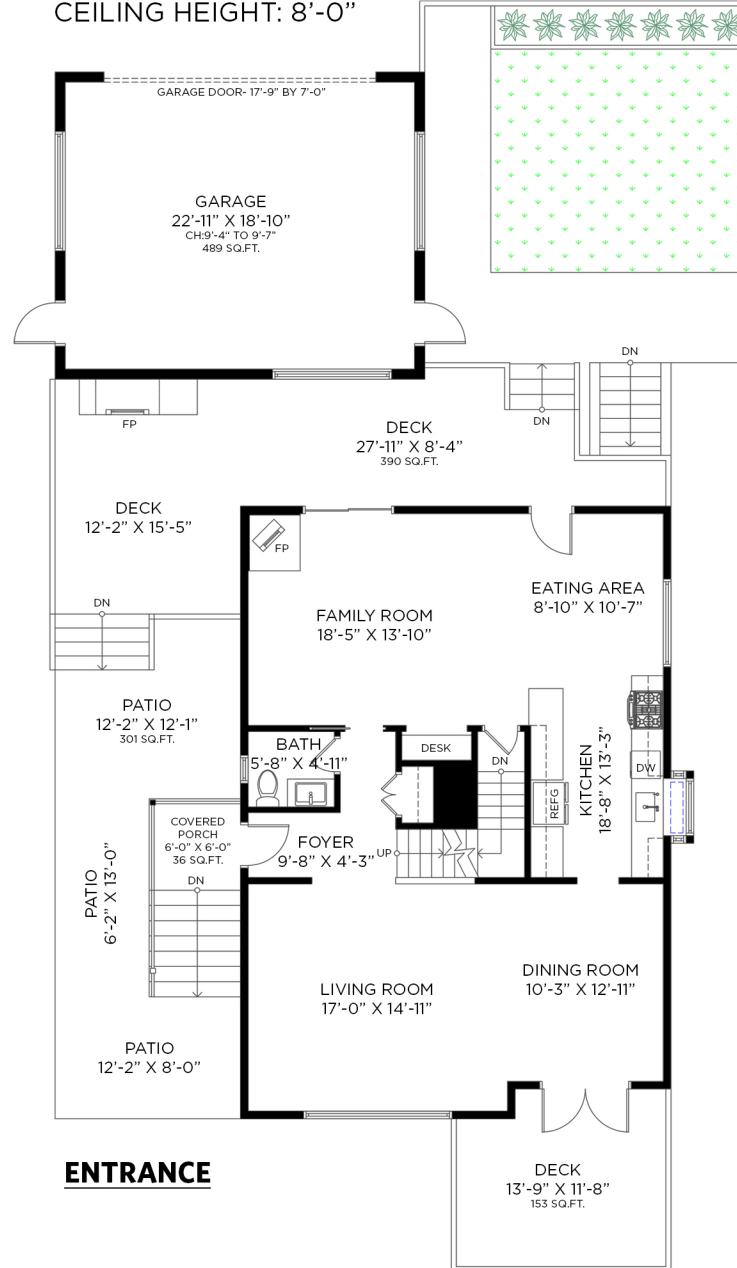
# 1032 KEITH ROAD NORTH VANCOUVER, BC

4 BEDROOMS + 3 1/2 BATHROOMS

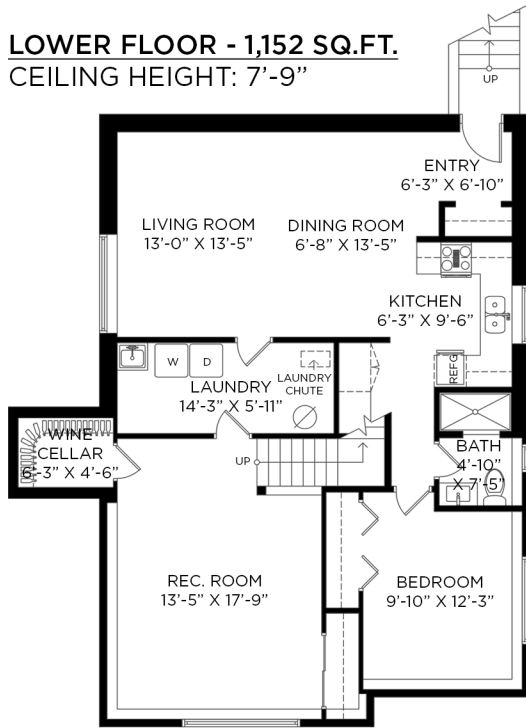
LOWER FLOOR:	1,152 SQ.FT.
MAIN FLOOR:	1,116 SQ.FT.
UPPER FLOOR:	946 SQ.FT.
<b>TOTAL INTERIOR:</b>	<b>3,214 SQ.FT.</b>

GARAGE:	489 SQ.FT.
EXTERIOR LIVING:	880 SQ.FT.

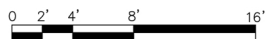
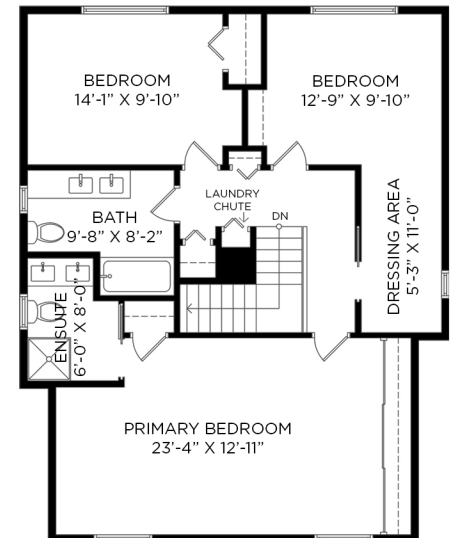
## MAIN FLOOR - 1,116 SQ.FT. CEILING HEIGHT: 8'-0"



## LOWER FLOOR - 1,152 SQ.FT. CEILING HEIGHT: 7'-9"



## UPPER FLOOR - 946 SQ.FT. CEILING HEIGHT: 7'-5"



Floor plan not suitable for architectural/construction purposes. ANSI Z765 stand used to calculate square footage. Buyer to verify. E&O insured for \$1,000,000.

