



# GAVIN HUGHES

REAL ESTATE TEAM

LOVE YOUR NEIGHBOURHOOD

604.626.6618

[gavin@gavinhughes.ca](mailto:gavin@gavinhughes.ca)

[www.gavinhughes.ca](http://www.gavinhughes.ca)

# 1115 W. 22ND ST NORTH VANCOUVER, BC

6 BEDROOMS + DEN + OFFICE + 4 1/2 BATHROOMS

**MAIN FLOOR - 1,685 SQ.FT.**  
CEILING HEIGHT: 9'-0" TO 9'-10"



Floor plan not suitable for architectural/construction purposes. ANSI Z765 stand used to calculate square footage. Buyer to verify. E&O insured for \$1,000,000.





# GAVIN HUGHES

REAL ESTATE TEAM

LOVE YOUR NEIGHBOURHOOD

604.626.6618

[gavin@gavinhughes.ca](mailto:gavin@gavinhughes.ca)

[www.gavinhughes.ca](http://www.gavinhughes.ca)

# 1115 W. 22ND ST NORTH VANCOUVER, BC

6 BEDROOMS + DEN + OFFICE + 4 1/2 BATHROOMS

**UPPER FLOOR - 1,284 SQ.FT.**  
CEILING HEIGHT: 8'-0" TO 9'-7"



LOWER FLOOR:	1,663 SQ.FT.
MAIN FLOOR:	1,685 SQ.FT.
UPPER FLOOR:	1,284 SQ.FT.
<b>TOTAL INTERIOR:</b>	<b>4,632 SQ.FT.</b>

ATTACHED GARAGE:	417 SQ.FT.
EXTERIOR LIVING:	1,214 SQ.FT.
SHED:	88 SQ.FT.



Floor plan not suitable for architectural/construction purposes. ANSI Z765 stand used to calculate square footage. Buyer to verify. E&O insured for \$1,000,000.





# GAVIN HUGHES

REAL ESTATE TEAM

LOVE YOUR NEIGHBOURHOOD

604.626.6618

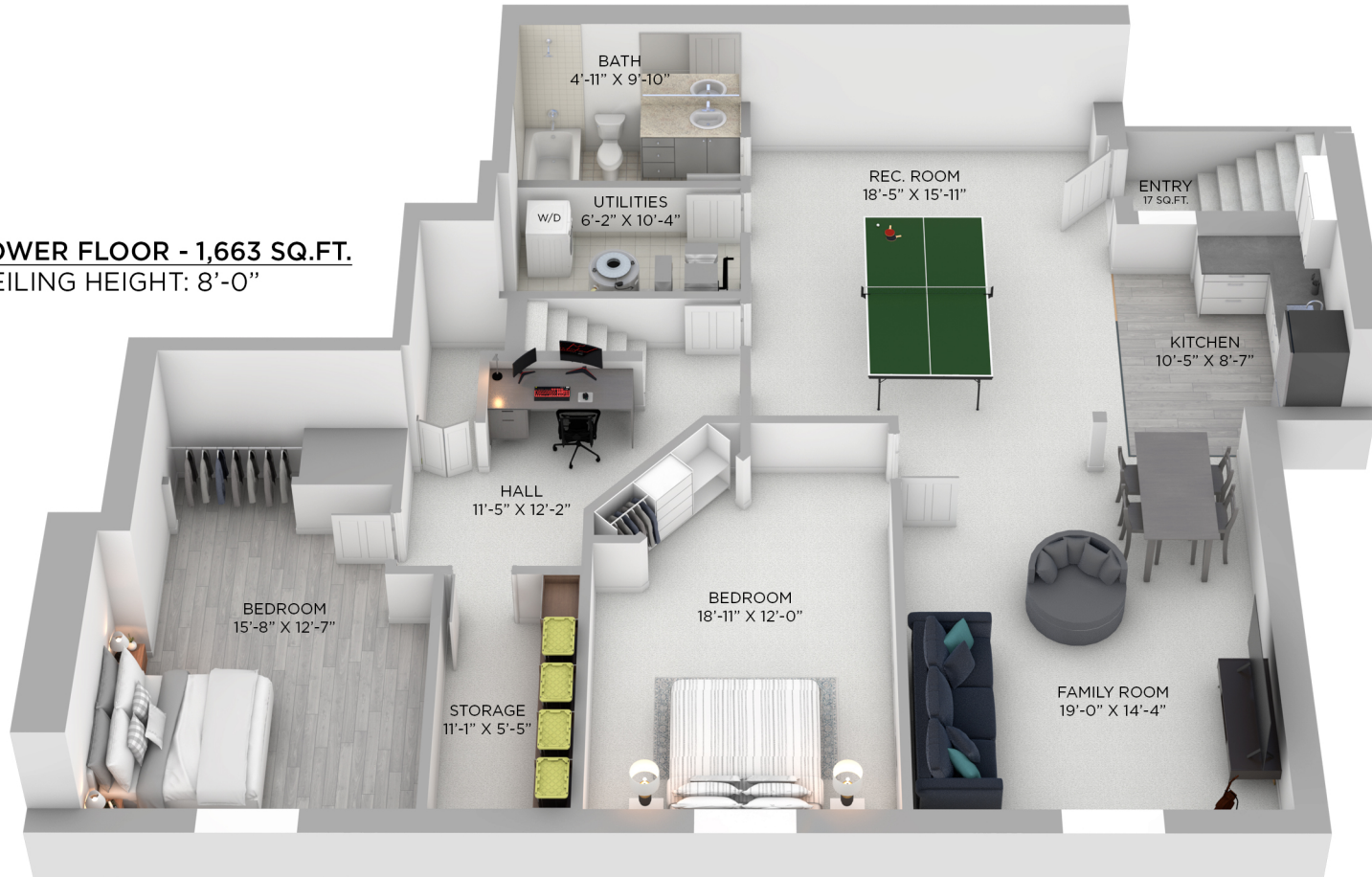
[gavin@gavinhughes.ca](mailto:gavin@gavinhughes.ca)

[www.gavinhughes.ca](http://www.gavinhughes.ca)

## 1115 W. 22ND ST NORTH VANCOUVER, BC

6 BEDROOMS + DEN + OFFICE + 4 1/2 BATHROOMS

**LOWER FLOOR - 1,663 SQ.FT.**  
CEILING HEIGHT: 8'-0"



Floor plan not suitable for architectural/construction purposes. ANSI Z765 stand used to calculate square footage. Buyer to verify. E&O insured for \$1,000,000.





# GAVIN HUGHES

REAL ESTATE TEAM

LOVE YOUR NEIGHBOURHOOD

604.626.6618

gavin@gavinhughes.ca

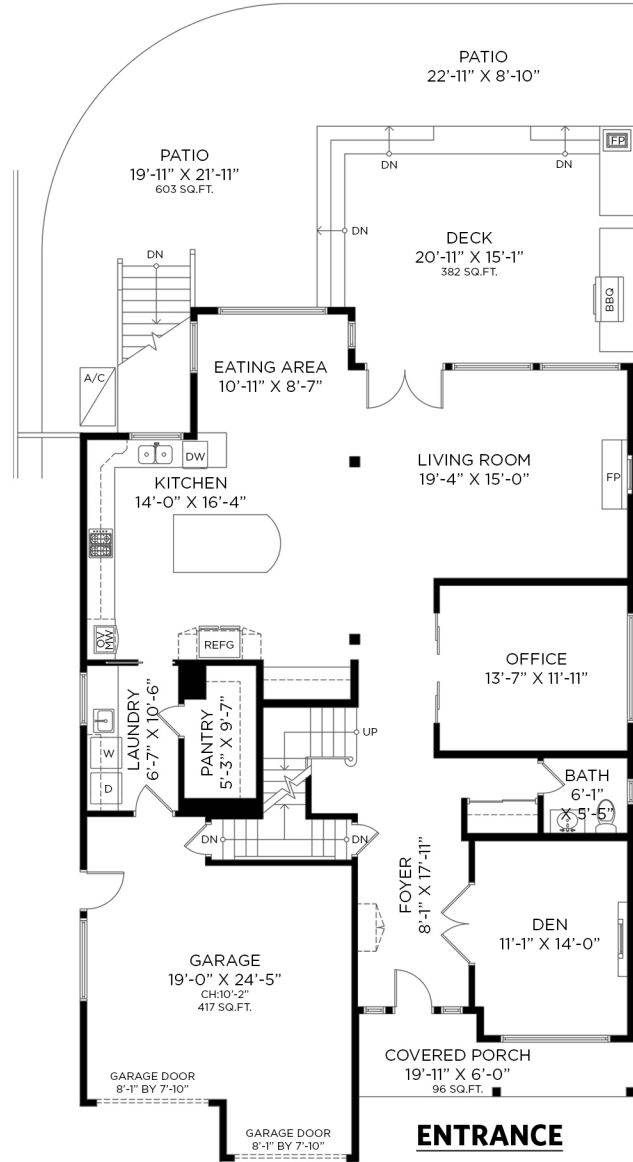
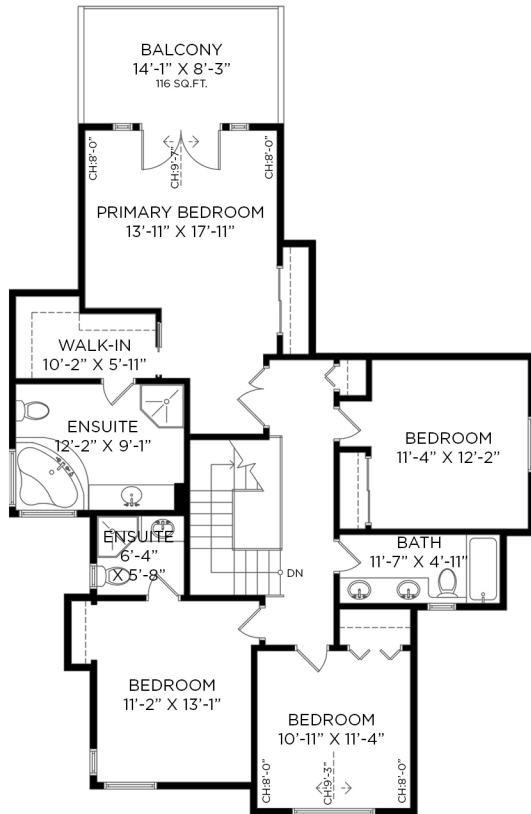
www.gavinhughes.ca

# 1115 W. 22ND ST NORTH VANCOUVER, BC

6 BEDROOMS + DEN + OFFICE + 4 1/2 BATHROOMS

**MAIN FLOOR - 1,685 SQ.FT.**  
CEILING HEIGHT: 9'-0" TO 9'-10"

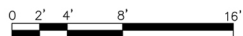
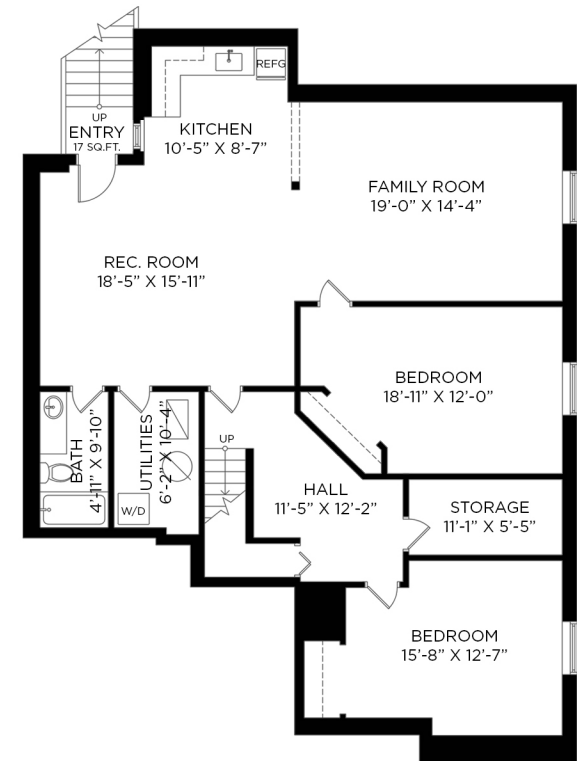
**UPPER FLOOR - 1,284 SQ.FT.**  
CEILING HEIGHT: 8'-0" TO 9'-7"



LOWER FLOOR: 1,663 SQ.FT.  
MAIN FLOOR: 1,685 SQ.FT.  
UPPER FLOOR: 1,284 SQ.FT.  
**TOTAL INTERIOR: 4,632 SQ.FT.**

ATTACHED GARAGE: 417 SQ.FT.  
EXTERIOR LIVING: 1,214 SQ.FT.  
SHED: 88 SQ.FT.

**LOWER FLOOR - 1,663 SQ.FT.**  
CEILING HEIGHT: 8'-0"



Floor plan not suitable for architectural/construction purposes. ANSI Z765 stand used to calculate square footage. Buyer to verify. E&O insured for \$1,000,000.

