

Gavin Hughes

604.626.6618 gavin@gavinhughes.ca

www.gavinhughes.ca

1295 Plateau Drive, North Vancouver

2 bedrooms + 1 bathroom

Main Floor - 802 sq.ft.

Ceiling height - 8' 0"

Lower Floor: 18 sq.ft.

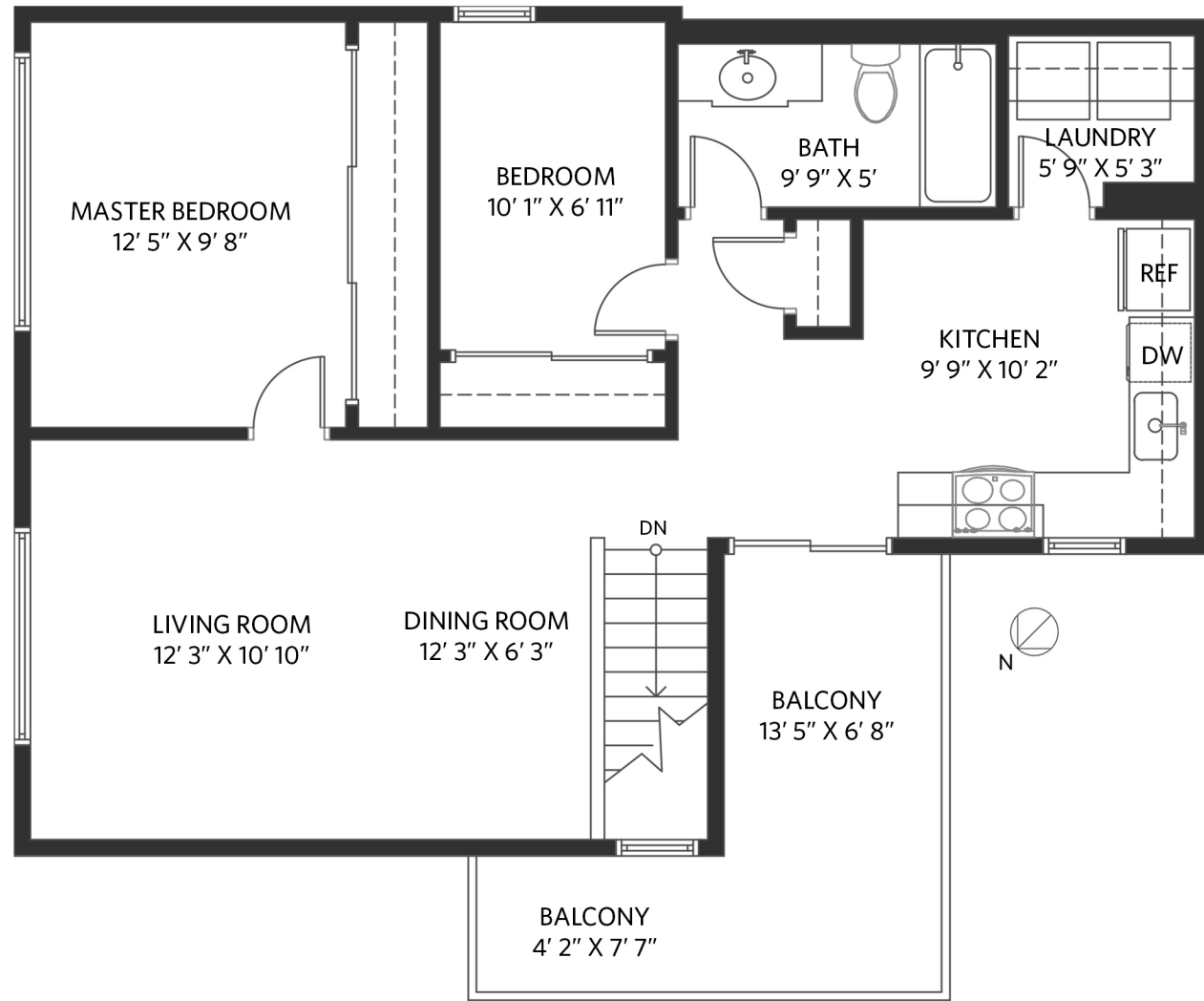
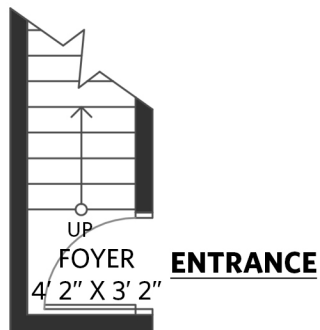
Main Floor: 802 sq.ft.

Total Interior: 820 sq.ft.

Balcony: 129 sq.ft.

Lower Floor - 18 sq.ft.

Ceiling height - 7' 8"



OAKWYN REALTY

www.OPTIMUMFLOORPLANS.com 2D & 3D Floor Plans 604-729-5033



Floor plan measurements, dimensions, square footage, existing structures & features are approximations and for illustrative purposes only. We make no guarantee, warranty or representation, expressed or implied, as to the accuracy and completeness of this rendering. Independent verification is recommended. E&O Insured for \$1,000,000

Gavin Hughes

604.626.6618 gavin@gavinhughes.ca

www.gavinhughes.ca

1295 Plateau Drive, North Vancouver

2 bedrooms + 1 bathroom

Main Floor - 802 sq.ft.

Ceiling height - 8' 0"

Lower Floor: 18 sq.ft.
Main Floor: 802 sq.ft.
Total Interior: 820 sq.ft.

Balcony: 129 sq.ft.

Lower Floor - 18 sq.ft.

Ceiling height - 7' 8"



ENTRANCE



OAKWYN REALTY

www.OPTIMUMFLOORPLANS.com 2D & 3D Floor Plans 604-729-5033



Floor plan measurements, dimensions, square footage, existing structures & features are approximations and for illustrative purposes only. We make no guarantee, warranty or representation, expressed or implied, as to the accuracy and completeness of this rendering. Independent verification is recommended. E&O Insured for \$1,000,000