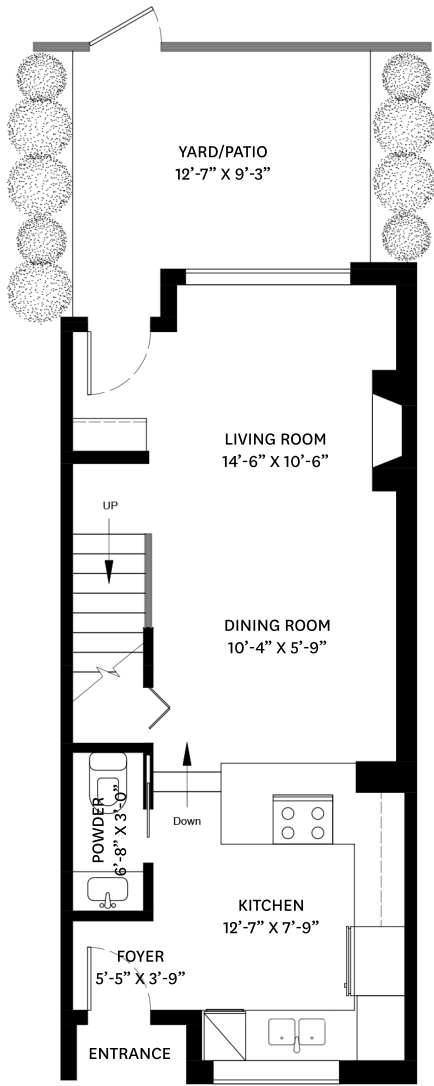
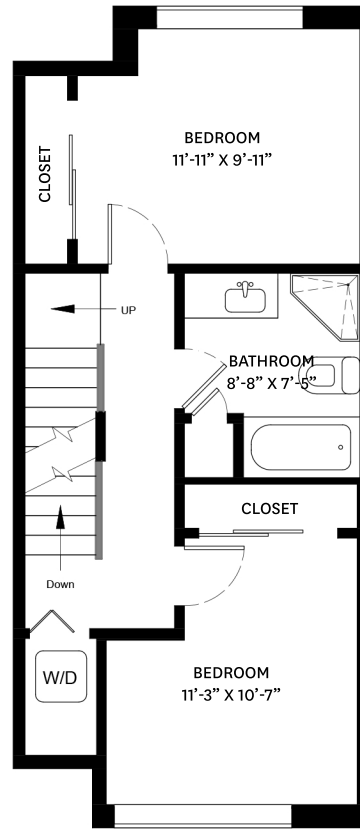


26-230 SALTER STREET, NEW WESTMINSTER, BC

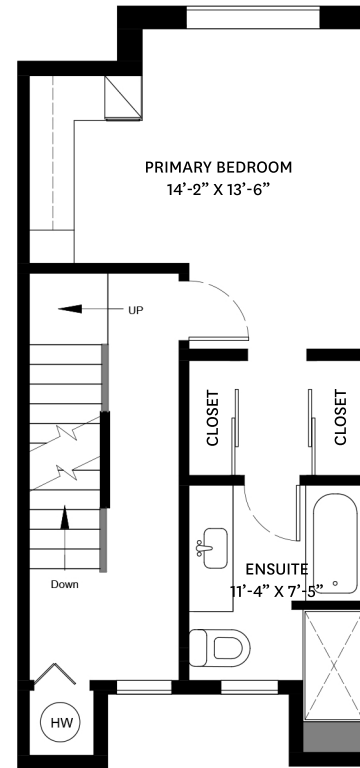
MAIN FLOOR TOTAL: 483 SQ.FT. **ROOFTOP PATIO:** 128 SQ. FT.
UPPER FLOOR TOTAL: 491 SQ.FT. **YARD/PATIO:** 124 SQ. FT.
TOP FLOOR TOTAL: 438 SQ.FT.
ROOFTOP TOTAL: 50 SQ.FT.
TOTAL: **1,462 SQ.FT.**



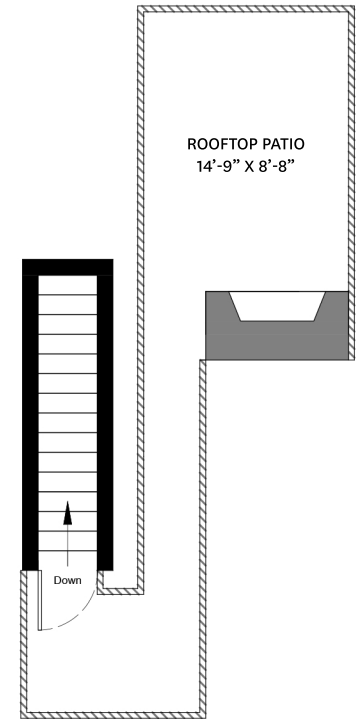
MAIN FLOOR PLAN
Ceiling Height: 9'-11"



UPPER FLOOR PLAN
Ceiling Height: 8'-0"



TOP FLOOR PLAN
Ceiling Height: 8'-0"



ROOFTOP FLOOR PLAN

